

Survey No. ....

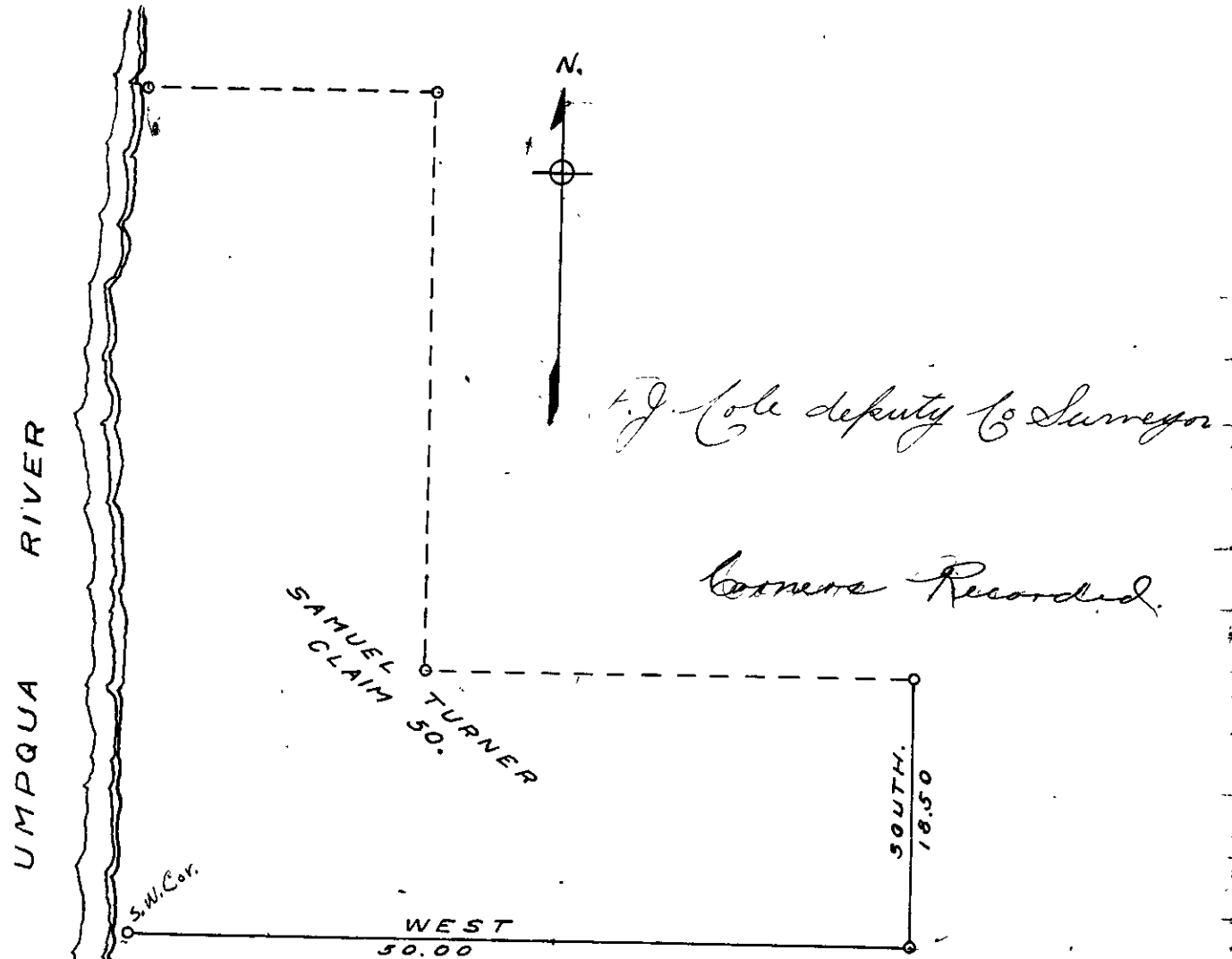
Made for Samuel Brown

T. 22 S. R. 8 W.

April 23, 1913

Field Book No. 12 = 32.

Pages 14-16.



Survey made to establish S.W. and S.E. corners of claim 50.

Beginning at the N.E. Exterior L corner of claim 50 I find stake previously set by M. B. Skermond for corner, trees are still standing and corner in place. Thence I ran South on East boundary 18.50<sup>ch</sup> set temporary corner. Thence West on well blazed line 50.00 chains I set stake and find no evidence of bearing trees, as this must be very close by indication of blazed South line. I set an Oak post 3x3x48 inches for corner, at 50.00 chains. I set a witness rock 6x10x16 inches 36 feet east of S.W. corner and mark.

A Maple 14 inches S. 3° W. 6 ft.

An Alder 12 " N. 89° E. 25 "

Return and set a rock 6x8x12 inches for S.E. corner and mark. A Fir 30 inches S 59 1/4° W. 177 feet. An Alder 14 inches N. 88° 35' W. 329 feet.