

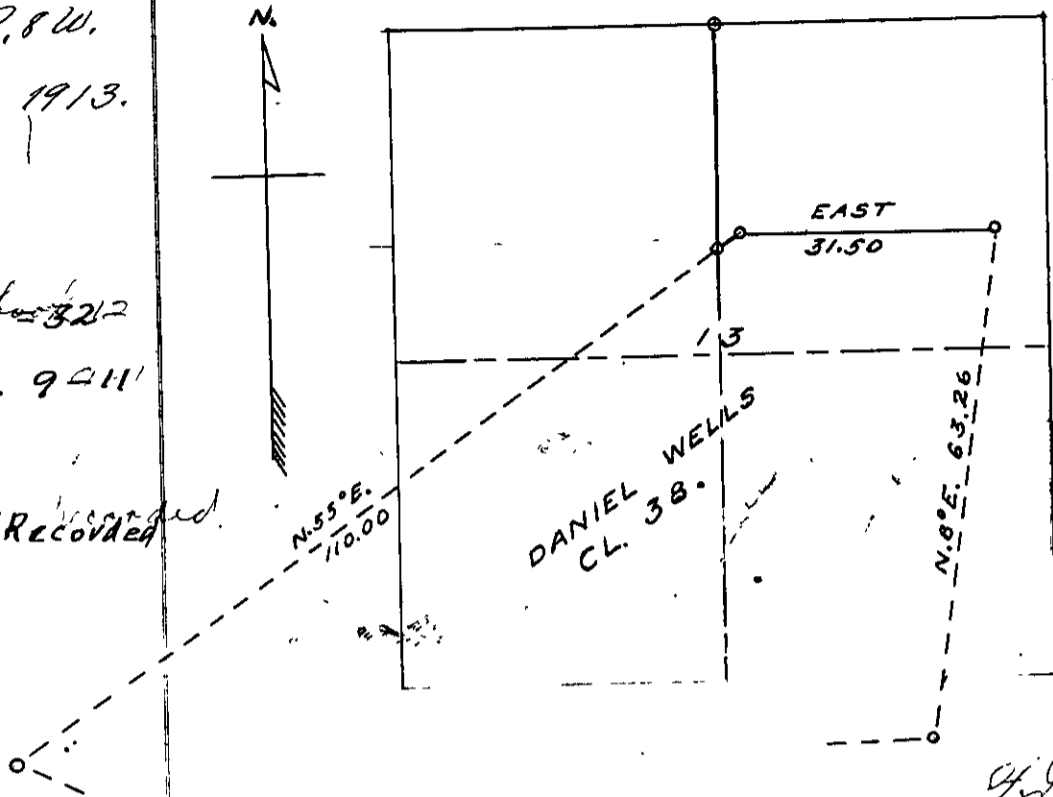
Survey No.

Made for *Binder Brothers*

T. 22 S. R. 8 W.
April 1913.

F. B. 12-322
Page 9411

Corners recorded



H. J. Cole, Dep. Co. Surveyor

The purpose of this survey was to locate Benders corner at the intersection of the Quarter Sec. line with the claim line.

I began at the 1/4 corner between Secs 12 & 13. Found one tree still standing but dead. From witness tree I ran as per field notes and set a Sandstone rock 8x10x14 inches from which I mark an Oak 28" N. 40° 35' E. 273 ft. A Maple 12" S 72° E 63 ft. Thence I ran South to a point near the centre of Sec. 13. At the 1/4 Sec corner on the South. of 13, also the section corners adjacent were only mounds in the Prairie I did not attempt to locate the centre of Sec 13.

Then I locate the N.W. corner of claim 38 and find Oak in place. Pin down. Set corner and run S. 55° W. random without chaining to the intersection of line previously run, as approx corner. To locate N.E. corner, we run by compass for direction only, and identify trees which are dead but in place. Set post for corner.