

County Surveyor's Record, Douglas County, Oregon

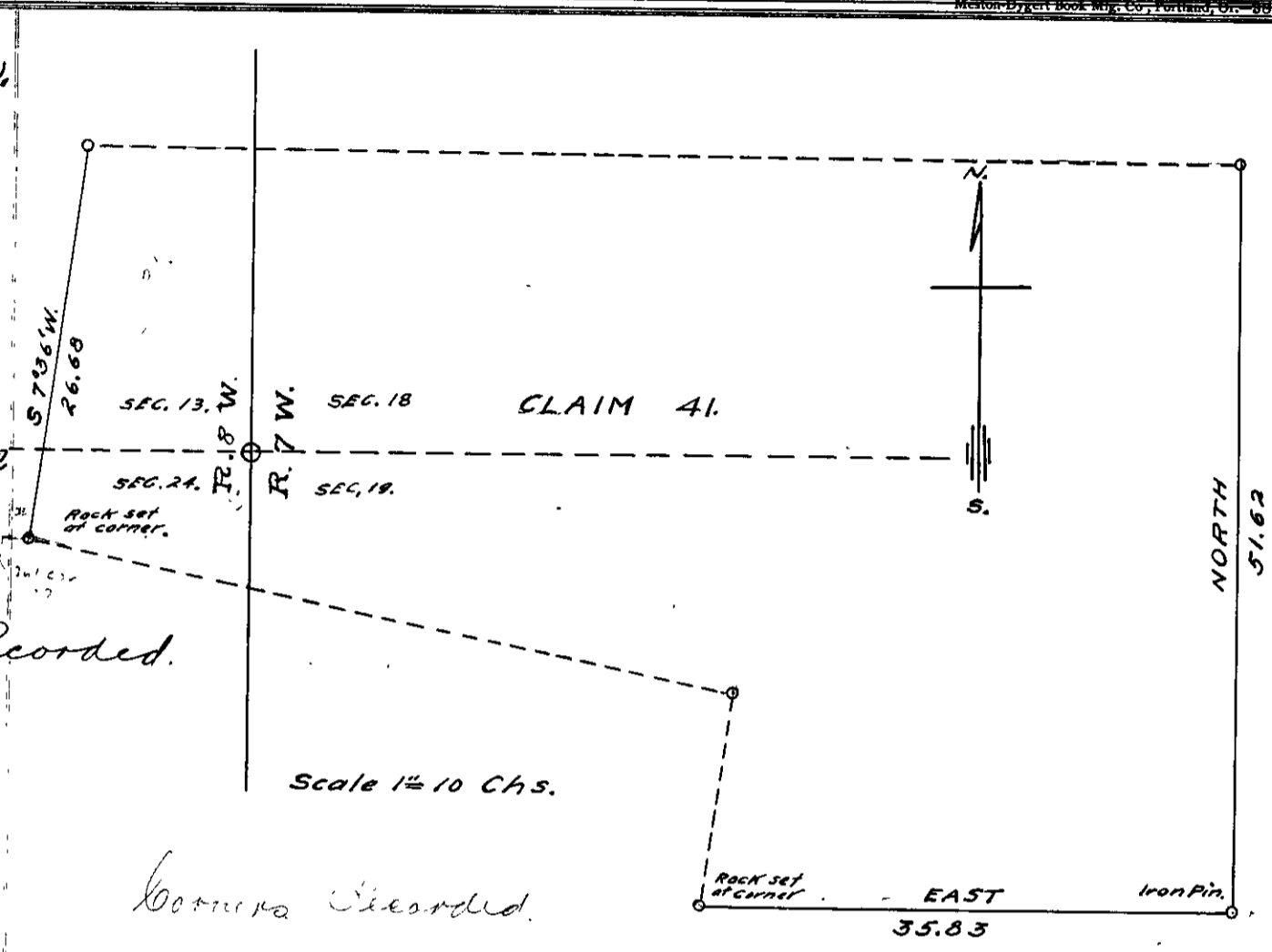
Survey No.

Made for *Binder Bros, Elkton*

*T. 22 S. R. 7 W. 8 W.
April 16th 1913.*

*Field Book 12 = 32
Pages 9-11*

Corners Recorded.



Corners Recorded.

I began at the N.W. corner of claim 39 in T. 22 S. R. 8 W. Ran S 7° 36' W. on West line of claim 26.68 chains intersect S.W. corner of claim. Find ash witness tree and cut out R.T. Set a sandstone rock 8" x 12" x 14" for corner.

*To locate S.E. corner of claim 41.
Began at S.W. corner of claim 41 in T. 22 S. R. 7 W. Ran East 35.83 chains to S.E. corner of claim. Find Oak tree and chop out Original mark also fir stump. Set corner as per field notes and drive 1" iron bar in ground. From which I mark
1. Oak 30 in dia. 41. N. 71° 35' E. 277 lbs.
" " 16 " " " N. 20° 45' W. 452 "*

Thence I ran North 51.52 Chains to the N.E. corner of claim 41. Find Original Bearing Tree and set an Oak post marked C. 41 & C.S. for corner.

H.J. Cole Supt Co Surveyor.