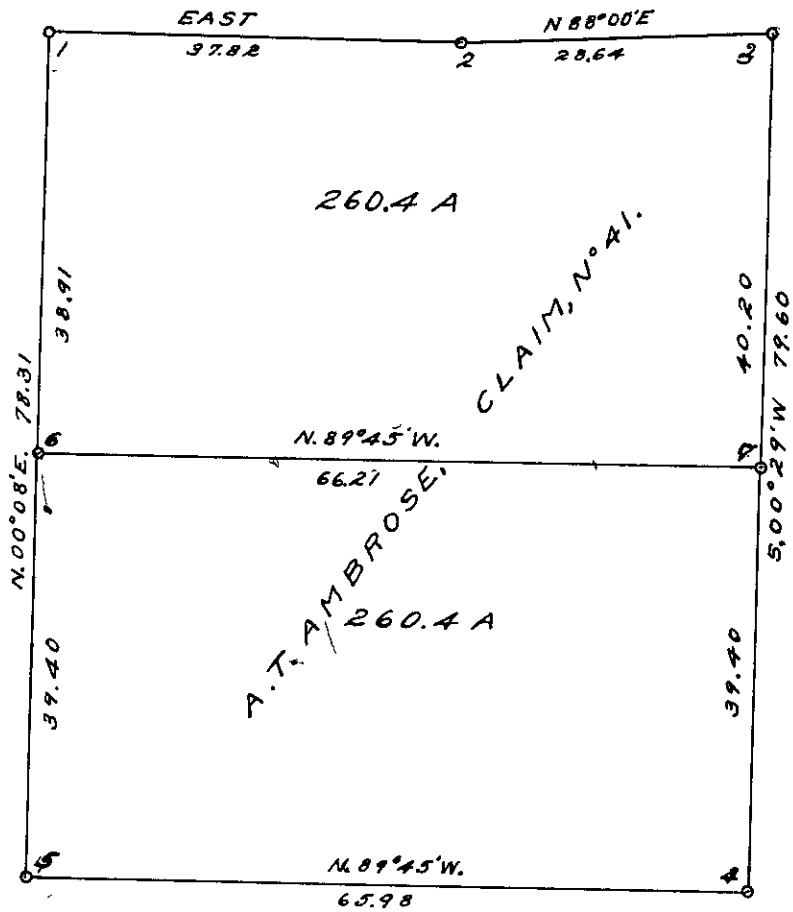


*T23. S.R. 5 W.
April 17th 1914
by F. J. Cole.*

*Field Book 13-39
Page 25*

Corners Recorded.



Corners 5, 2 & 3 were set from the original bearing trees. 1 & 4 were run in from adjacent corners. 6 was set by placing a stake at fence, 35 lks east of claim line. Mark from stake

An oak 8 in dia S. 2° E. 60 lks.

7 is a cedar stake on east claim line from which A. B. C. 28 in dia N. 30° E. 15 lks.

" " " 24 " " S. 13° W. 58 "

1000' 1000'