

Survey No.

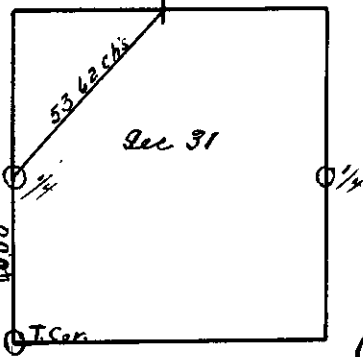
Feb. 15 & 16 1909

Made for *A. J. Rhynier et al.*

T₂₇S 26 & 27 S.
R₄ 4 & 5 W.

Scale 2" = 1 mile

Townships 26²⁷ South Ranges 4 and 5 West



Wit: Price and Fred Barber Chisum.

Began survey at the township corner for Townships 26 and 27 S, Ranges 4 and 5 W. (I reset corner as noted below)

Thence North on West side sec. 31 at Var. 17° 00' fall on 1/4 corner on west side sec 31 and reset as noted below. Thence, run N 42° 23' E at 53.62 to 1/4 corner on N side sec 31. Last tempo. stake and note one Gov. B.T. is standing.

Township corner.

Marked red fir tree in place 10" dia. from which.
 B. oak 12 ins. dia. N 77 1/2° E 82 lks dist.
 R. fir 10 S 30° E 47 old B.T.s in evidence
 .. " 14 S 62° W 33
 .. " 16 N 47 1/2° W 33 1/2

1/4 corner on West side sec 31 from which
 Red fir post 5" sq. 3ft long.
 Old Gov. bearing trees still standing. old B.T.s in evidence

1/4 corner on E side sec 31 from which
 Basalt stone 6" x 6" x 16" from which
 White oak 7 ins dia S 50 1/2° W 14 lks. old B.T.s in evidence
 Black " 8 S 46° 48' E 108 "