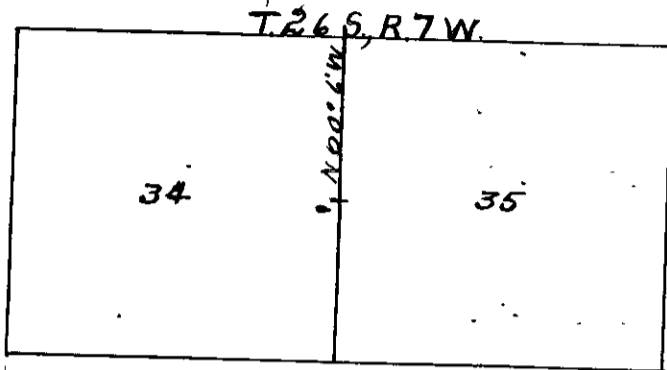


County Surveyor's Record, Douglas County, Oregon

Survey No. ....

Made for *Ben. Mc. Muller*

Moston-Dixert Book Mfg. Co., Portland, Or., 38233



Aug. 18 1908.

Began Survey at the  
1/4 corner bet sections 34 & 35  
T26 S, R7 W.

I set for corner a Sandstone 4" x 8" x 16" and <sup>noted</sup> that B Ts are  
as per Gov. field notes.

Thence north from this corner on section line, at  
40.00' fell 7 lbs East of sec. cor. for sections 26, 27, 34 & 35.

I set for sec corner an iron pipe 1 1/2" diam driven 2 ft into  
the ground. I note most of Gov. <sup>Birney</sup> trees are still pre-  
served. I correct back on true line with bearing of  
S 00° 6' E and fell on 1/4 corner.

M. B. Germond  
Dep. Co. Surveyor