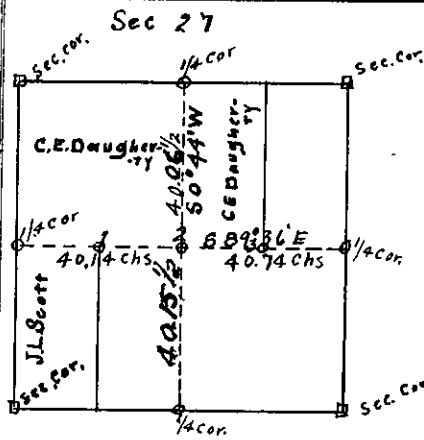


Survey No. ....

Made for J.L. Scott et al. ....

T32S. 18.6 W.



Subdivision of Sec 27 T<sub>32</sub>S, R<sub>6</sub>W W<sub>7</sub>M

Began at 1/4 cor. on west side of section 27 which is a year post 4"x4"x3' set 18" in the ground, properly marked and witnessed as per. low. field notes.

80.88 Thence East on random line across section at 57 lbs N. of 1/4 corner on E side of section. Corner was rotted but B.T.s still standing. I corrected back on true line with bearing of N 89° 36' W and fell on 1/4 corner on West side of section.

Then began at 1/4 cor. on N. side of section 27 which is year post 4"x4"x4' set 18" in ground, properly marked and witnessed by one tree as per low. field notes. (Buggs cor.)

80.22 Thence South on random line across section at 103 lbs E of 1/4 cor. on S side of section. Corner rotted but B.T.s still standing. I corrected back on true line with bearing of N 0° 44' E and fell on 1/4 cor. on N side of section. At the intersection of these true E & W line and the true N & S line I set corner as (Cor. 2) below, which is the true corner for center of section 27. This corner makes the inside boundaries of the 1/4 section as diagram above. is; E 1/2 = 40.74 chs. W 1/2 = 40.14 chs, N 1/2 = 40.06 chs. S 1/2 = 40.15 1/2 chs. At the mid points of the E & W 1/2's I set corners for J.L. Scott & C.E. Daugherty as (Cor's 1 & 3) below.

Corner N<sup>o</sup> 1 Year post 4"x4"x3' set 2 ft in the ground. From which  
 White fir 6 ins. dia. brs. N 41° 50' E 95 lbs. dist.  
 Red " 6 " " " N 56° 00' W 218 " "

Corner N<sup>o</sup> 2 Year post 4"x4"x3' set 2 ft. in ground. From which  
 Dogwood 5 ins. dia. brs. N 62° 27' E 41 lbs. dist.  
 Burr oak 5 " " " S 22° 08' E 27 " "  
 Red fir 7 " " " S 58° 30' W 81 " "  
 " " 12 " " " N 11° 00' W 64 " "

Corner N<sup>o</sup> 3 Year post 4"x4"x3' set 2 ft in ground. From which  
 Madrono 10 ins. dia. brs. N 38° 30' W 24 lbs. dist.  
 Maple 12 " " " S 83° 30' E 77 " "

Recorded &  
 Surveyed by  
 M. G. Germond  
 Dep. Co. Surveyor