

County Surveyor's Record, Douglas County, Oregon

Survey No.

Made for ... C. Patrick

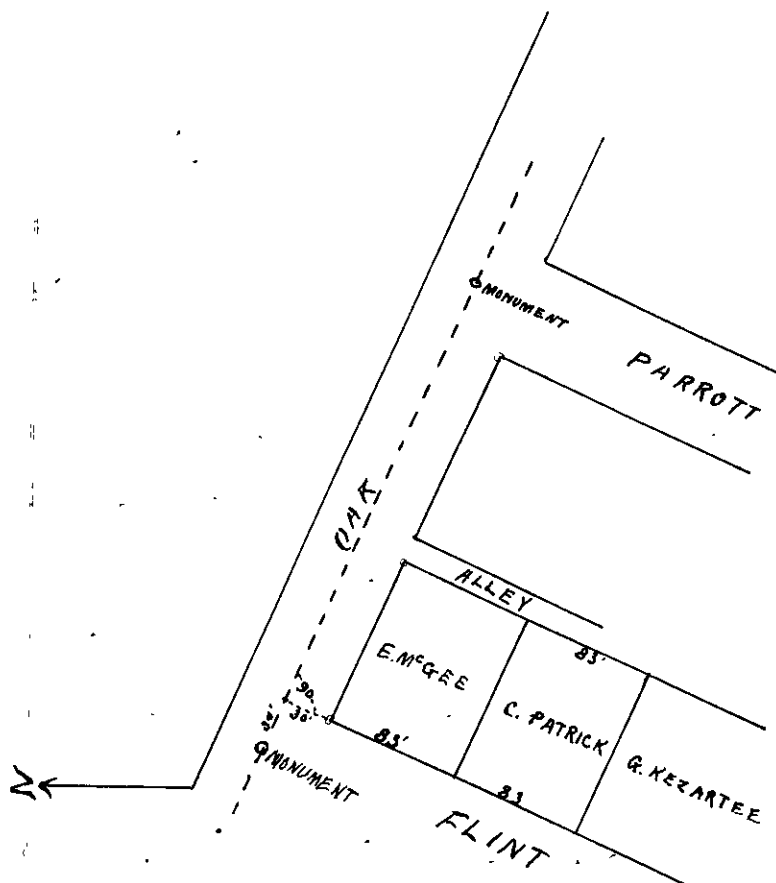
Weston Dygert Book Mfg. Co., Portland, Or. 35333

Survey made to locate the corners of the following described property
 Commencing on the East line of Flint Street 83 feet South
 from the southeast corner of Flint and Perry (or Oak) Streets, thence southerly
 along the East line of Flint St 83 feet, Thence East 25° South 104 feet and
 4 inches to Alley, Thence North along West side of Alley 83 feet, Thence West
 25° North 104 feet and 6 inches to place of beginning all lying and being in
 the City of Roseburg, Douglas Co., Oregon.

Survey was made January 25th. 1908. The owners of the adjoining
 lands G. Kizartee and E. McGee, having been notified 6 days previous
 were present

To locate the corners of the above described property I proceed as follows:

At a point 30 feet S. 65° E of the Surveyors monument set at the intersection of
 Flint and Oak Sts I set up transit on line and from a foresight on
 monument set by City Surveyor at intersection of Parrott and Oak Sts.
 I turn off angle of 90° to right and set points on line as follows: at 113 feet
 set post for North west corner of property, at this corner with a back sight on
 North west corner I turn off an angle of 90° to left and at 137 feet and
 4 inches set South east corner of property and from the North west corner of the
 property with a back sight on the South west corner I turn off an angle
 of 90° to the right and at 113 feet and 6 inches I set post for North east
 corner



SCALE 1" = 100'

Recorded July 29 1908

by C. Roberts

Deputy Co. Surveyor

8 9