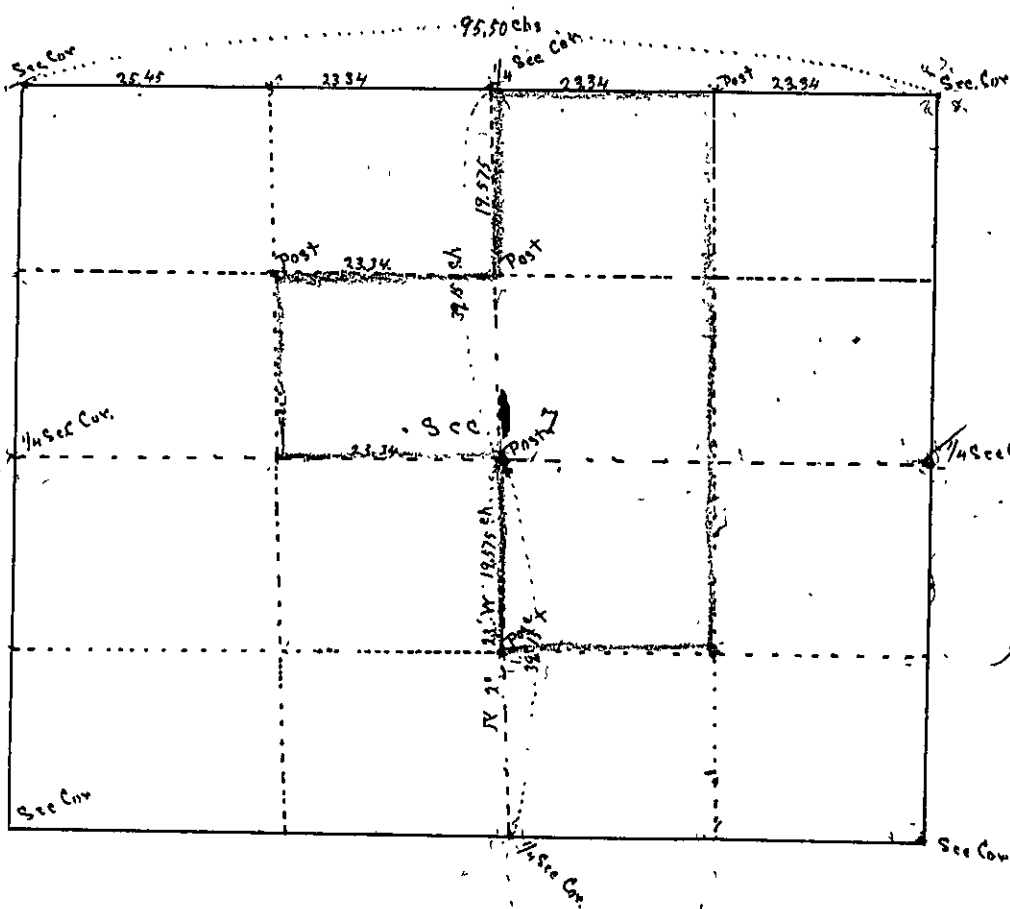


County Surveyor's Record, Douglas County, Oregon

2195-50 47.75 143  
 40,00  
 5-5-50

Made for J. G. Sommers

Sec 7, T 29 S, R 6 W, W M



VV, A. Sebring + Eugene Richardson chainmen  
 Beginning at the Cor. of S. 5, 6, 7 + 8  
 95.50 chs  
 I ran west and intersected T. line  
 at Sec Corner. The 1/4 Sec. Cor. bet S. 6 + 7  
 having been destroyed and all evidence  
 as to its exact location lost, I set 1/4 Sec.  
 Cor. bet S. 6 + 7 at 48.79 ch E. of N.W. Corner  
 of Sec. 7. I then went to 1/4 Sec. Cor.  
 bet Sec 7 + 18 and ran a random  
 line N and at 78.30 ch  
 line N and intersected line bet  
 6 + 7, 3.31 chs East of 1/4 S. Corner. The  
 S. 2° 23' 6" at 19.575 ch set Post at N.E.  
 Corner of SE 1/4 NW 1/4, at 39.15 set post

for center of Section, (the same being point of intersection of line run between 1/4 Sec. Cor.  
 bet S. 7 + 12 and 1/4 Sec. Cor. bet S 7 + 8) at 58.725 chs set Post for S.W. Corner of N.W. 1/4 SE 1/4.  
 Beg at Post bet for N.E. Corner of SE 1/4 NW 1/4, I ran west and at 23.34 chs set stake  
 for N.W. Corner of SE 1/4 NW 1/4. I also set a stake 2.334 chs east of 1/4 Sec. Cor. bet 6 + 7  
 for N.E. Corner of N.W. 1/4 N.E. 1/4

This survey was made for J. G. Sommers 9/28/06 and 10/27/06.  
 Notice was given all interested persons and each personally consented  
 to survey being made and also after survey was completed, agreed  
 to accept same as final.

H. C. Bunn  
 D. C. S.