

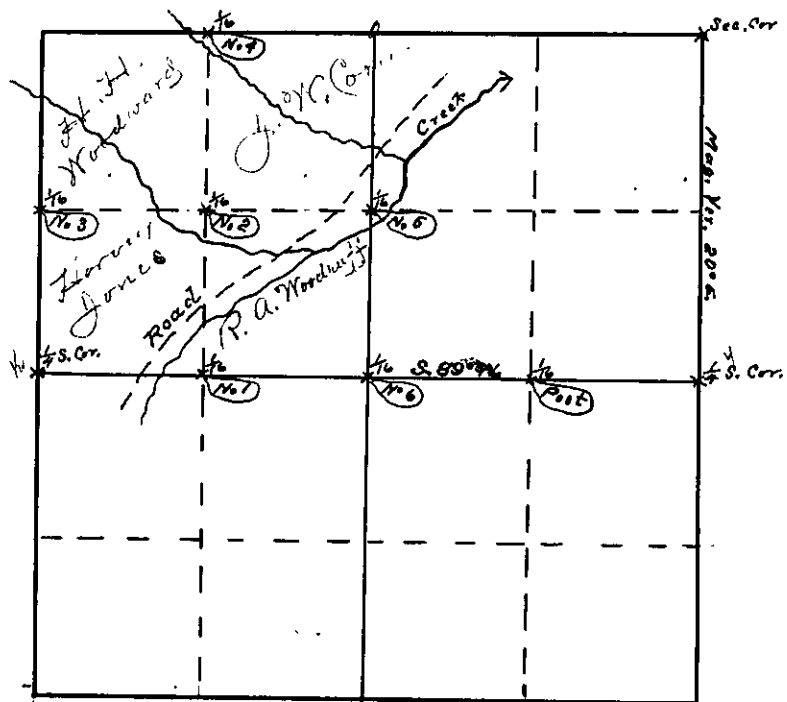
County Surveyor's Record, Douglas County, Oregon

Survey No. ....

127-7  
Vol 31

Made for

*R. A. Woodruff*  
Jan. 10<sup>th</sup> 07



Corner No 1 Lane 5" at: N 45° W 5 1/2 krs Fir 5° S 25° E 9 krs dist  
 " 2 Fir 15" S. 80° W. 34 1/2 krs Fir 20" N. 60° E. 19 1/2 krs  
 " 3 Fir 5" West 5 krs Fir 10" S. 64° E. 14 1/2 krs dist  
 " 4 Fir 20" N. 36° E. 14 krs Ash 14" N 76° W 40 krs.  
 " 5 Fir 12" N. 30° E 11 krs W. Fir 12" S. 70° W. 17 krs dist  
 " 6 Fir 8" N 89° W. 17 krs Fir 12" N 80° E. 2 krs.