

Survey No. ....

Made for Adam Fisher

T 26 S, R 6 W.  
O.C. # 47

INT  
COR  
  
S.L.  
COR

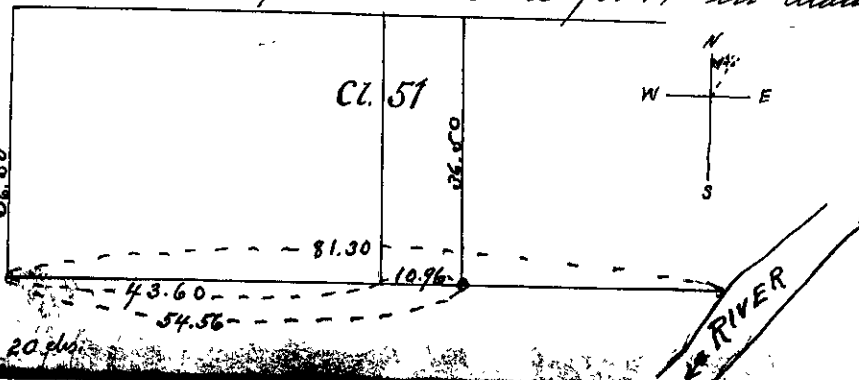
Surveyed Sept. 8 - 1905  
Beginning at Southeast corner of Cl. 47 in T 26 S, R 6 W.  
I ran North at 67.00 chs intersect at South-east cor. of Cl. The witness trees having disappeared I set post marked c. s. from which a white oak 8 inches in diam. bears S 2.0° W. 88 lks. dist. and a white oak 5 inches in diam bears N. 89° W. 40 lks. dist. Both trees marked c. s. B.T. Thence I ran East at 28.00 chs. set post marked c. s. for cor. of Cl. from which a forked black oak 32 inches in diam. bears N 59° E 58 lks. dist.  
From the South-east cor of Cl 47 as aforesaid which is a black oak tree 30 inches in diameter I ran West to left bank of North Umpqua River I could find no trace of bearing trees same having <sup>evidently</sup> been washed away by river. At point where line intersected top of bank I marked a black oak tree c. s.

Filed Oct. 8, 1905  
C. E. Roberts, Co Surveyor

T. 23 - R 7 W

COR

Surveyed Dec 30 - 1905  
For A. B. Haines and J. C. Kent  
Chairmen: R. P. Wells and J. P. Anderson, Stagnan Alfred Haines.  
I begin at the S.W. cor. of O.C. # 51 in T 23 S, R 7 W. The corner stone for this cor. having disappeared I set an oak post at exact point of old cor. according to the government field-notes, The original bearing tree is standing but partly decayed I marked new bearing trees for this cor. as follows: A black oak 10" in diam bears S 72 1/2° W 22 1/2 lks. dist., a white oak 8" diam bears N 61° W. 22 lks. dist. Both marked C S B.T  
Thence I ran East (mag. decl. 21° 40' E) at 43.60 chs. intersect E. line of W 1/2 of Cl. # 51 and at 54.56 chs. set temporary S.E. cor for J. C. Kents land, thence I ran North on a random line and at 36.53 chs. intersect North line of Cl. 51, thence I ran South on a true line and at 36.58 chs. set a sand stone 18" X 14" X 3" marked thus + 16 inches in the ground for S.E. cor. of J. C. Kents land.  
From this cor. I continue line East and at 81.30 chs. intersect right bank of Umpqua River, the bearing trees for this cor. having been washed away by the action of the river I set a post at point of intersection from which a fir 12" in diam bears West 70 links and a fir 14" in diam. bears N 14° W. 109 lks. dist.



Filed January 29 - 1906  
C. E. Roberts  
Co. Surveyor.