

County Surveyor's Record, Douglas County, Oregon

Survey No. 2

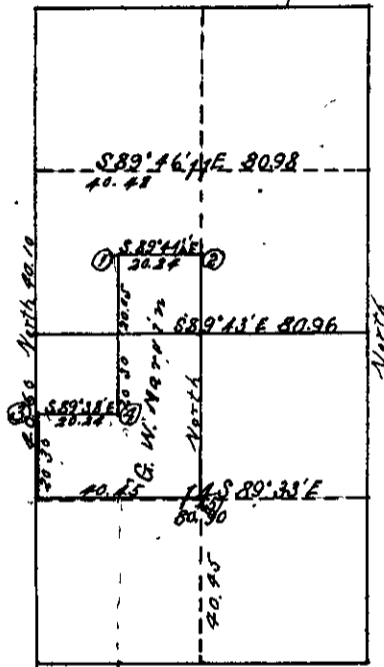
Made for G. W. Martin

Filed Sept. 15 - 1904

T 32 S. R. 5 W.

This survey was made to locate the corners and boundary lines of the SE 1/4 of SW 1/4 of Sec 11. and the NE 1/4 of the NW 1/4 and the S 1/2 of the NW 1/4 of Sec 14 in T 32 S., R 5 W. N.M. Date of survey June 15-16, 1904
 Chaimmen R. H. Springer and E. T. Wilson, sworn.

The corners and distances shown on the plat below were ascertained by measurements made upon the ground



- (1) a post marked c s from which a
 Fir 7" bears N. 21° E. 12 lks
 Madrone 18" bears S. 34° W. 46 lks.
- (2) a post marked c s from which a
 Black oak 8" bears West 20 lks.
 W. Oak 6" " N. 10° W. 9 "
- (3) a post marked c. s. from which a
 Pine 40" bears N. 60° E. 17 lks.
 oak 28" " S 61° W. 28 "
- (4) a post marked c. s. from which a
 Black oak 18" bears N. 28° W. 3 lks.
 Laurel 7" " S. 13° W. 8 "
- (5) a post marked c s. from which a
 Balun 16" bears S. 10° W 118 lks
 Ash 8" " S 34 1/2° E. 132 "

C. E. Roberts

C. Surveyor