

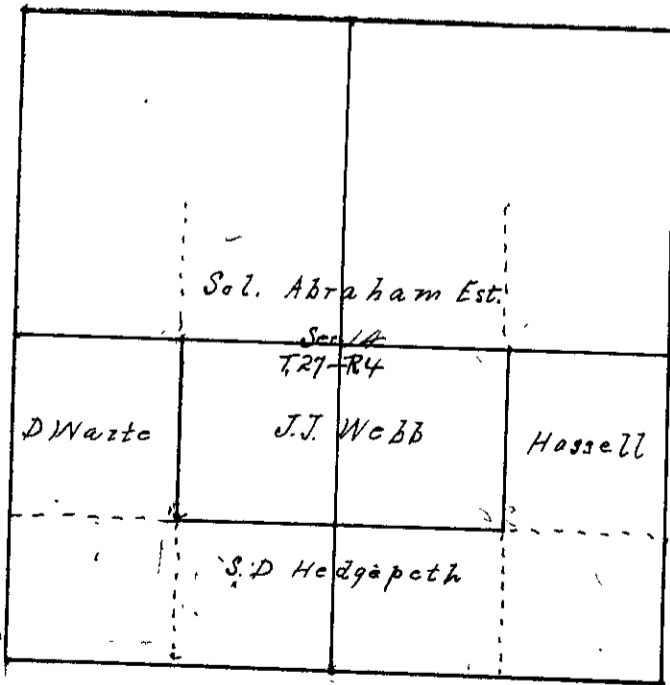
Survey No. 1

Made for J.J. Webb

Sec 14. S27R4
 Survey made to locate
 the NW 1/4 of S6 and
 the NE 1/4 of SW 1/4 of
 S14. T27S R4W.

F.B. 7 P. 38

Chamman: J. O. Singleton and Albert Hassell, both duly sworn
 From the quar. cor. on the South side of Sec. 14. T. 27 S., R. 4 W.
 I ran North (ran 20°40'E) at 81.75 chs. intersect at quar. cor. on North
 side of Sec. From the quar. cor. on the East side of Sec. 14. T. 27-S. R. 4 W. I ran
 West (ran 20°40'E) at 81.75 chs. intersect 44 links North of quar. cor. on West
 side of Section. Thence N. 89°44'E on true line, at 41.38 chs. intersect line
 run between opposite quarter corners on North and South sides of Sec. at a point
 41.12 chs. North of quarter cor. on South side of Sec. at 81.75 chs. intersect at
 post. Then beginning at a point on corrected line running from opposite
 quar. cor's on East and West side of Sec. 20.69 chs. from quar. cor. on West side of Sec.
 which point I marked by setting a sandstone 6" x 12" x 20" marked thus for corner from
 which a black oak 22" bears N. 66° E. 36 lks. and a fir 14" bears S. 48° W. 40 lks.
 Thence N. 89° 48' E 40.87 1/2 chs. set an oak post from which a fir 40" in dia. bears
 N. 11° E. 185 lks. no other tree near. Thence South 20.56 chs. set post from which
 a white fir 18" in dia. bears S. 42° W 14 lks. a white fir 28" in dia. bears S. 43° E. 45 lks.
 Thence S. 89° 54' W 40.87 1/2 chs. set oak post from which a cedar 6" in dia. bears
 N. 15° W 70 lks. a cedar 10" bears S. 35° W 76 lks. Thence North 21.56 chs. intersect
 at cor.



This above survey was made Jan. 12-14, 1904, Filed July 15th 1904
 C. E. Roberts
 Co. Surveyor.