

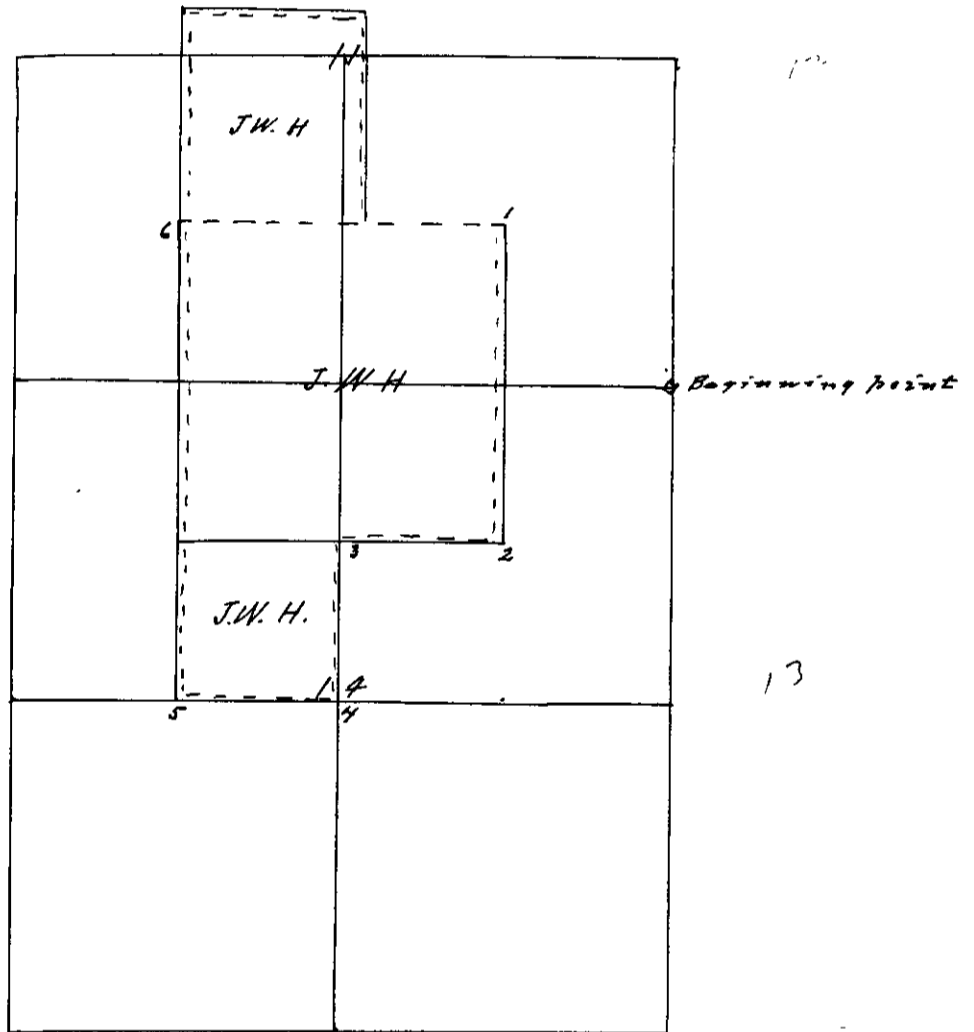
County Surveyor's Record, Douglas County, Oregon

Survey No.

Made for J. W. Hamilton

July 31-1902
T. 27 S. R. 7 W.

Chairman Geo. Tining J. W. Marshman
Start at Sec corner common to Sec 11, 12, 13 and 14 T. 27 S. R. 7 W.
and run S. 89° 30' W. (variation 20° 15' E.) 19.95 chs to quarter quarter post marked
O.S., thence North 20 chs. Thence from quarter quarter post above mentioned
South 20 chs., thence S 89° 37' W. 19.98 chs, thence South 20 chs. thence
S. 89° 40' W. 19.98 chs. thence North 60 chs



Distances to corners as per plat

- 1 Black oak 18" N 10° E 47 Hs.
- 2 White " 20 N 2° E 18 "
- 3 fir 8" S 23° W 10 "
- 4 fir 6" S. 44° E. 30 "
- 5 Laurel 8" N 20° W. 11 "
- 6 fir 4" S 7° W 5 "
- 6 no tree near set fir post 4 inches square on North line of Co. Road

C. E. Roberts Co. Surveyor.