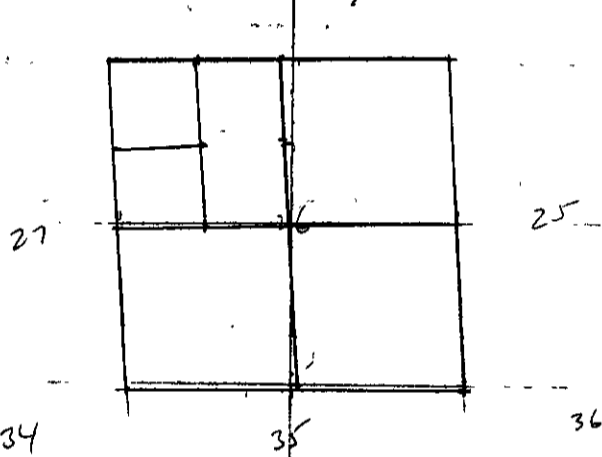


County Surveyor's Record, Douglas County, Oregon

Survey No. 34

Made for

19.45 set past C.S. - from which - a Fir 18 in dia bears N 8° 15' 37" E
 a Fir 20 in dia bears S 24° W 88 links
 thence from N.W. cor. Sec. 26, N 89° 25' E, 21.30 set past C.S. from which -
 a Fir 10 in dia bears N 53° 15' E 41 links, a Fir 10 in dia bears S 130° E 20 links
 thence S 4° 30' E, random through center of N.W. 1/4 Sec. 26, 39.58 intersect
 E-W line through center of Sec. 26, 36 links E of 1/4 mile past
 thence N 3° 59' W on true line through center of N.W. 1/4 Sec 26
 19.79 set past C.S. in center of N.W. 1/4 Sec 26 from which
 a pine 8 in dia bears N 51° 30' E 16 links, a Fir 12 in dia bears S 5° 45' E 13 links



Survey No 35

Made For U.S Flourmox

July 27-1902

T.275. R.7 W.

Pg 285

FOR CORRS.

cor

cor

cor

cor

cor

Set past cor Secs 16, 17, 20 and 21, T.275, R.7 W. as per original field notes
 thence East - var - 20° E - 1.79 set past marked C.S. from which -
 a W. Oak 6 in dia bears N 70° 15' W, 54 links, a W. Oak 8 in dia bears N 31° 45' E 40 links
 thence N, 14.19 set past C.S. from which - a Fir 36 in dia bears N 78° 30' W 5 links
 a Black Oak 10 in dia bears S 18° 45' W 53 links. thence East, 40.51 set past
 marked C.S. from which - a W. Oak 8 in dia bears N 2° 45' W 42 links, a W. Oak
 8 in dia bears South 53° 15' W 17 links
 thence N, 8.70 set past marked C.S. - from which - a W. Oak 8 in dia bears
 S, 47 links a B. Oak 8 in dia bears N 36° 15' E, 30 links
 thence West, 30.20 set past marked C.S. from which - a B. Oak 36 in dia
 bears West 58 links, a white Oak 16 in dia bears N 11° W 28 links
 thence North 25.00 set past C.S. from which - a B. Oak 36 in dia bears S 57° E 147 links
 a W. Oak 10 in dia bears N 57° E 210 links
 thence East 7.95 set past C.S. from which a Fir 16 in dia bears N 10° E 40 links
 a Fir 14 in dia bears N 68° 30' W 53 links
 thence East 19.91 set past C.S. from which a B. Oak 36 in dia bears S 49° W 27 links
 a B. Oak 14 in dia bears S 49° E 27 links