

County Surveyor's Record, Douglas County, Oregon

Survey No. 16.

Made for County Roads

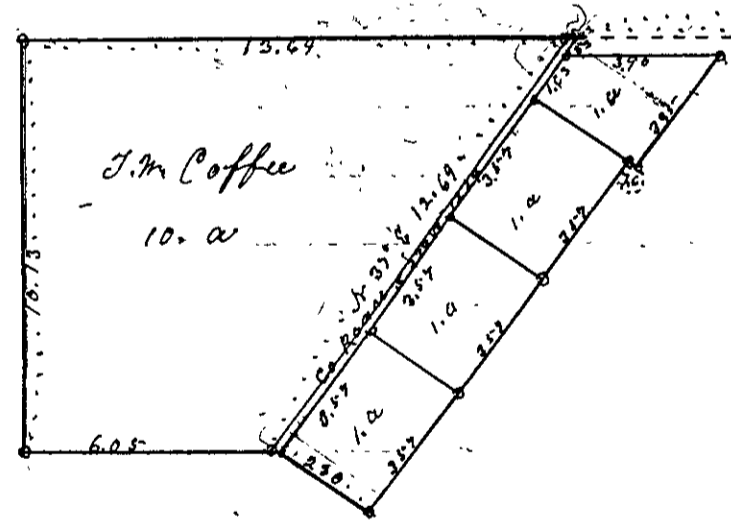
November 15
T. 22 S. 177 W.

Survey commenced at intersection of Beckley private Road with County Road leading from Elkton to Oakland. Set post 3/4 feet long 4 inches square - scrubbed. R. from which B Oak 10 in dir bears S 32° W 24 links
 " " " " " N 10° E 68 " "
 And the S.W. cor. of Thomas Stevens & Wife D.L.C. Sec 38. in T. 22 S. R. 7 W. bears S 83° W 4.15 ch and S 78° W 10.00 ch + S 2 1/4 W 333 ch
 John Henderson of M. Spaulding & Louis St Aris Viewers
 Ed Smith & J. E. Compton, Chairman & Geo Smith Marker
 Thence in a S.W. course 23. M. 31.4 ch marking line of Road and setting mile post every mile until B.T. closed on Coos County at Road on County line bet Douglas & Coos County.
 for intermediate point - See County Records.

Dec 30 16
March 6

J. L. Crown & others

T. 29 S. R. 8 W.
Bar 20° E.



Survey made March 6-1901 for J. L. Crown & others
 Commencing at the S.E. cor. of A Martindale D.L.C. cl 42. of C Wiley & D McKay sworn chairman. Thence West 11.03 ch Thence S 37° W 53.16 ch starting from of this survey. Set Rock 8+8+12 in Thence S 37° W 10.3 ch set Rock 8+8+12 in
 Thence S 37° W 3.57 ch set Rock 8+10+12 in. Thence S 37° W 3.57 ch set Rock 8+10+12 in
 Thence S 37° W 3.57 ch set Rock 10+10+12 in. Thence S 63° E 2.80 ch set post
 Thence N 37° E 3.57 ch set post Thence N 37° E 3.57 ch set post Thence N 37° E 3.57 ch set post
 Thence S 63° E 2.26 ch set post. Thence N 37° E 3.95 ch set post
 on S bdy of co R. & Thence West 3.90 ch to place of begin Cot 4. acs.
 Thence from a point 11.63 ch west of S.E. cor. of A Martindale Corp. Thence West 13.64 ch set post. Thence South 10.13 ch set post. Thence East 6.05 ch set post in center of Co. Road & Thence N 37° E 13.64 ch to place of begin Cont. 10.00 ch