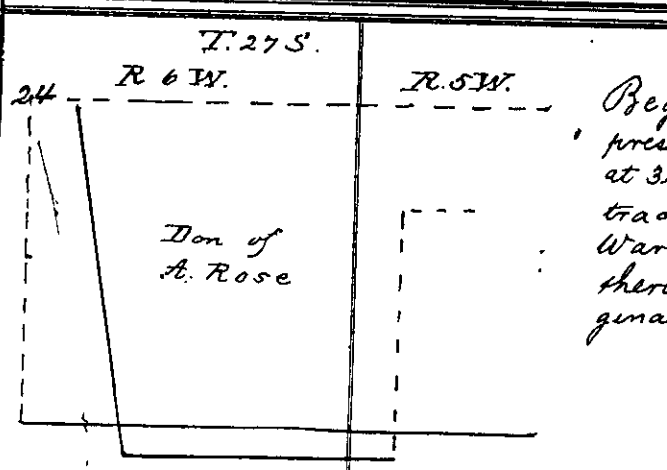


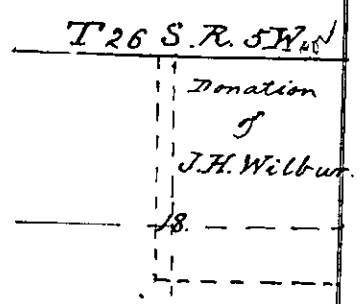
Survey No. 49.

Made for City of Roseburg April 25, 1900.



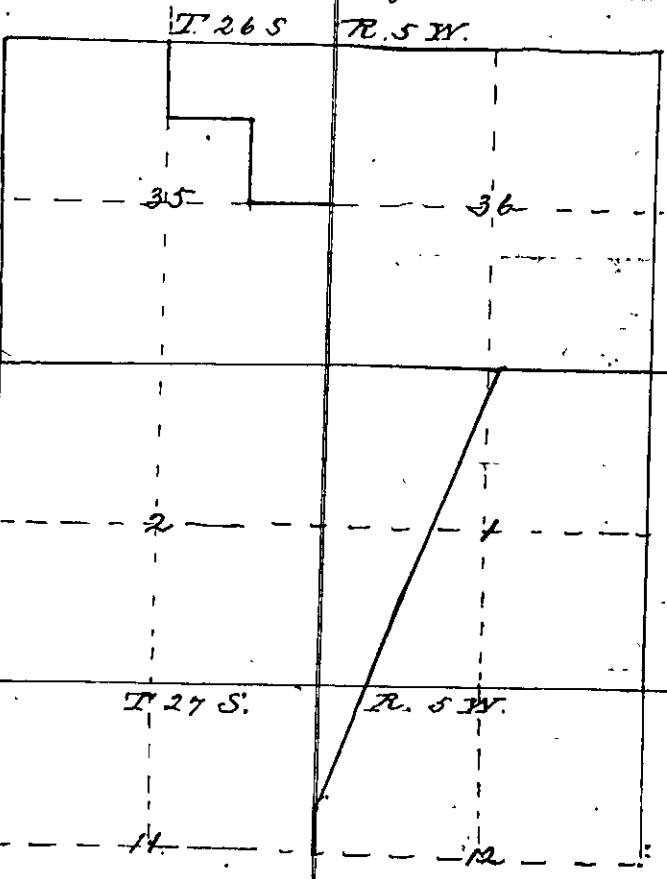
Begin at S.E. cor. of Rose donation, Var. 19° 18' E. Run S. 89° 25' W., along present fence. At 10.85 chns middle of Co. road 46.32. 40 chns, middle of Co. road, at 32.95 chns mark, spot being on R.R. right of way, for S.W. cor. at 33.20, R.R. track. Go from S.W. cor. N. 91° W. 43.56 chns. set post. This line cuts W end of Warehouse and two other houses further on; it follows the high bank; there are only young trees west of this line. Gravel bed beyond the original survey of the donation. Heavy hail, through the day.

Wm. Loomis and Geo. W. Grubbe. April 26, 1900. SURVEY No. 50.



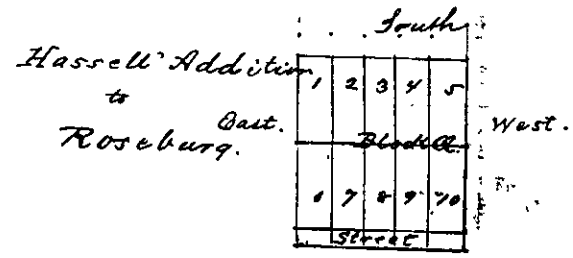
Begin at S.W. corner of Wilbur donation; it is a stone well buried with wh oak B.I. run South 1.01 chns, set post, from which a wh oak 20" diam bears N. 40° E 112 lks distant, same B.I. as for claim 48. Then go to 1/4 sec. cor. between sec. 18 and 17; reset same post; run South 8.5 chns, set post, from which a wh oak 8" diam bears N. 55 1/2° W. 83 lks distant, a bl oak 15" diam bears S 72° W 119 lks thence S. 83 3/4° E W. Var. 20° E. 243.86 chns. to opposite corner

James Short, Wm. Dixon et al. May 14, 16 & 17 1900. SURVEY No. 53



Set post for 1/4 sec. cor. between sec. 1 and 36, and raised a mound of stone, from or by the old dead B.I. Var. 23 3/4° E run S. 89 3/4° E 4.55 chns set post. Go to 1/4 sec. cor. between sec. 11 and 12; which I reset. Thence go S 3.00 chns set post; also run N. 10.60 chns. Var. 13° 20' E set post; thence N. 17° E 4.55 chains to a pine 36" diam, thence N. 21 1/2° E to beginning cor., without chaining.

Set 1/4 sec. cor. between sec. 35 and 36; run thence, Var. 26° 20' E N. 89 3/4° W. 20.00 chns set post, from which a wh oak 3" dia. bears N. 88° E 10 lks distant, a wh oak 6" dia. bears N. 87° W. 15 lks distant. Thence 20.00 chns. to a bl oak 12" dia. set post. Thence N. 89 3/4° W. 20.00 chns set post, from which a bl oak 12" diam bears N. 6° W. 45 lks distant. Thence North 20.40 chns intersect 95 lks East of 1/4 sec. cor. which I reset by a post and mound of stone.



N. J. Welker May 19th 1900.

SURVEY No. 54

Begin at N.W. cor. of Hassell Addition, run S. 3.50 chns. set post, run E 40 ft. set post, run E. 40 ft. set post, East 40 ft set post, North 1.00 chns, set post, West 40 ft set post, West 40 ft set post, West 40 ft set post.

Co. Road May 26th 1900.

SURVEY No. 55.

From junction of Howe Street and East Avenue in Addition to Brookside to a junction of Bushey's Avenue and County road to Winchester. Length 77.50 chains; Level and open prairie.