

Survey No. 32

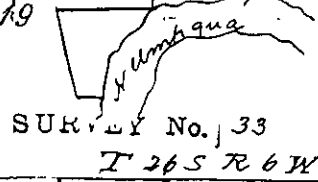
Made for William Loomis, Novbr. 6 1899

T 26 S R 5 W

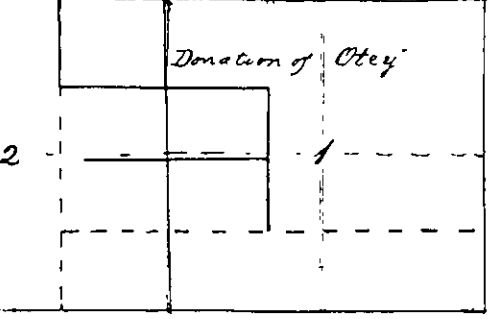
Set post for cor of sects 17, 18, 19 and 20 Thence Var 21°0' E N 89°29' W 10⁰⁰ chns, set a post from which a wh oak 42" dia (B.T. to sec cor) bears N 66° E 73 lks distant. Thence I run South 36 7/8 chns to the N. Umpqua River, set a post, from which a bl oak 8" dia bears S 85° W 46 lks distant. Thence return N 1 1/2 chns, and run West, 1180⁰⁰ fence N 21° S 12 50 chns set peg and run South 3.50 chns, strike fence line (supposed N. bdy of donation of Reed's heirs) at the river. Thence go East West-12⁰⁰ chns, mark a fence post, from which a bl oak 30 diam bears S 87° E 96 lks Thence S 12 1/4° E 11 7/8 chains to a (bl oak 45" dia) Thence N 87° E 3 5/8

chains to river, set post, from which a laurel 12" diam bears S 87° W 35 lks distant Thence N. 9 1/4° E along bank of river 6⁰⁰ chns, thence along bank to place of beginning

Albert Ottinger et al Novbr. 7 & 8. 1899



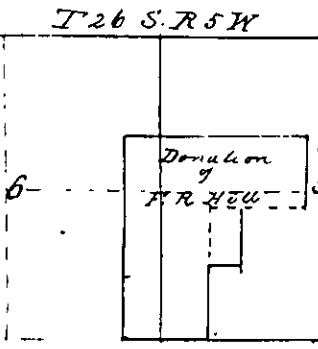
SURVEY No. 33
T 26 S R 6 W



Set a post on S boundary of Otey's don between E and W half, Thence, Var 20° E North 18 5/8 chns set post, from which a bl oak 36" diam bears N 65° W 90 lks, thence W to at 90 lks cross fence, without chaining to top of mountain Return to my post, go North 18 5/8 chns (at 33 35 chns N of begin cor I intersect E 70 lks of division line by line) set post, from which a fir 15" diam bears N 81 1/2° W 1 3/8 chns distant Thence run West, without chaining to N.E. boundary. At N.W. cor of donation, an oak, thence run South to intersection with my line running West, set a stone, and raised a mound of stones. Chaining not done on account of not sufficient help

W. B. Lamb Novbr. 9 1899

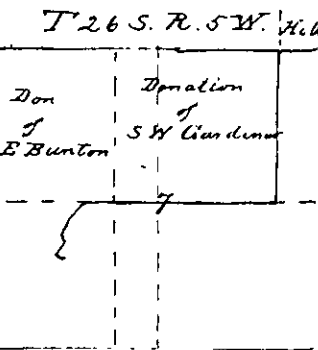
SURVEY No. 34



From S.W. cor of Hill's donation, a brick, set years ago, I run East, Var 21° E, 21.88 chns, set a stone 12 x 10 x 8 and raised a mound of stone, for S.E. cor of same don Thence run North 20 1/2 chns, set post in prairie field; East 7.45 chns set post in prairie, hillside Thence North 16.04 set post in prairie and field, set post, raised a mound of stone, thence N 87 1/4° E 18.05 to a post, at exterior angle of don; proved by B.T. Thence North 17.36 chns set stone and raised mound of stone, from which a bl oak 16" dia bears S 59 1/4° W 2.21 chns Thence West 47.89 chns to fence post 2 rods S of cross fence, set a post along Co road

Dwight Reed Dec. 7. 1899.

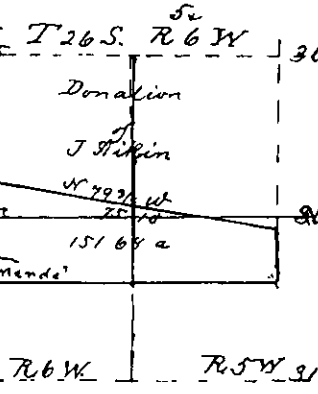
SURVEY No. 35.



From S.W. cor of Hill's donation, a brick, run South, Var 21° E 40⁰⁰ chns, set temp post, thence run 9.28 chns West, intersect at 9⁰⁰ chns south 50 lks of temp post, set true cor at 4 lks East of branch, by setting a post, from which a pine 36" dia bears N. 14° W 72 lks dist, I run thence West 41.14 chns to S.W. cor of Gardner's donation Thence West 7.50 to middle of Co road, Thence S 38 1/4° W 4.50 chns to a wh oak 36" in diam., thence S 14 1/2° W 5.48 chns, thence S 27 1/2° E 1 1/2 chns, thence S 20 1/2° W 2.46 chns, thence S 63° E 1.84 chns to E side of R.R. limits and West boundary of the Fruit Dryer Lot Parties do not know the Land any further

Louis Dumbleton, Jan 31st 1900

SURVEY No. 41.
ON YEARS



Begin on West boundary of J. Hikin's donation at N.W. cor. of Mende's Land, run N on line, Var 20° E 10 25 chns 1/4 sec cor bears W 1 87 chns, reset 1/4 sec cor. at 19 10 chns to N line of field, 19.35 chns set post, from which a wh oak 36" dia bears S. 37 1/2° E 44 lks distant S. 83° E Var 20° 35' E 11.85 to middle of R.R. E to S.E. cor. of claim, run North 14⁰⁰ chns. set a post, from which a bl oak 6" diam bears S 36° W 20 lks dist, a maple 15" dia bears N. 43° W 49 lks dist; N. 79 3/4° W. 75 10 chns to opposite post on West bdy.

John Hunter, April 23 1900

SURVEY No. 48

Line of levels. Begin on right Bank of N. Umpqua above Co. bridge, mark an alder 6" diam. Thence Var. 18° 5' E. S 58 1/4° W. 7 42 chns. — S. 57.35 chns. — E. 6.30 chns. — offset S 33 1/2° E 39 lks level reduced — 2 ft 5 1/4", thence S 69° 20' W 8.75 chns, — S. 48° W. 4.29 chns, — S 68° W 4.17 chns — S. 78 1/4° W 4.04 chns S. 74 1/2° W. 5.26 chns. — S. 67 1/4° W —; not practicable for the use intended.