

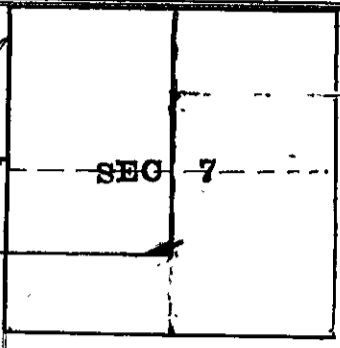
County Surveyor's Record, Douglas County, Oregon

Survey No. 24

Made for *Robt Cook*

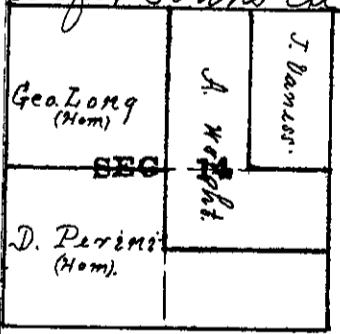
June 28 to 30<sup>th</sup>  
1899.

Township 23 South  
Range 4 West.



FC: 24-27-29

Begin at the cor to recs 1, 6, 7 & 12 T<sup>h</sup> 23 S. R. 4 W. (Var. 21° 10' E.) set a gas post and run E from cor, heavy hazel and arrowwood 15.50 top of rise. 30.50 Adams creek course North. at 40.75 intersect S. of old corner. witness trees being dead I reestablished this cor, set a stone 12x10x10 with new bearing trees. South 1/4 cor along on W hill side 19.25 stream course N. 38.00 top of hill. 57.25 stream course N.W. steep ascent 60.00 set stone 20x16x12 from which a fir 16 ins diam brs S. 21° W 20 lbs.; a chinquapin 7 ins diam S 42° E. 34 lbs. cor stands on top of ridge. West from cor descend hill 28.60 Adams creek course North. ascend steep hill. 40.85 township line set peg on line. continue N. at 40.00 W of T<sup>h</sup> line set temp post. Begin at the 1/4 cor bet recs. 1 & 12 T<sup>h</sup> 23 S. R. 4 W. - South - 45.00 leave prairie 59.90 intersect E & W line 18 lbs N. of temp cor. set post from which a fir 50 ins diam brs S. 52° W. 49 lbs.



Township 21 South  
Range 4 West.

Oct. 9, 1899

Survey No. 28

FB 110 PG 30-32

A. Wright, D. Perini and J. Van Ness.

Begin at the 1/4 sec cor bet 13 & 14 T<sup>h</sup> 21 S. R. 4 W. (Var. 21° E). Run a random line to opposite 1/4 sec cor. at 20.10 N. of 1/4 cor bet 13 & 14 set post. thence N. 40.00 to post set for survey No. Begin 1/4 cor. and run N. 40.20 set post for centre of sec 14. North on random line to 1/4 cor. 40.12 intersect E. of 1/4 cor. 17 lbs South on true line to centre of sec, thence South 20.00 set post from which a hemlock 8 ins brs N. 63° E. 17 lbs. a cedar 7 ins diam brs N. 27° W. 17 lbs; thence E. at 20.10 set temp post. at 40.10 post set by County Surveyor Collins intersect 10 lbs S. of post. West on true line at 20.05 set post from which a fir 20 ins diam brs S. 20° W. 2 lbs; a fir 18 ins diam brs N. 15° W. 32 lbs.