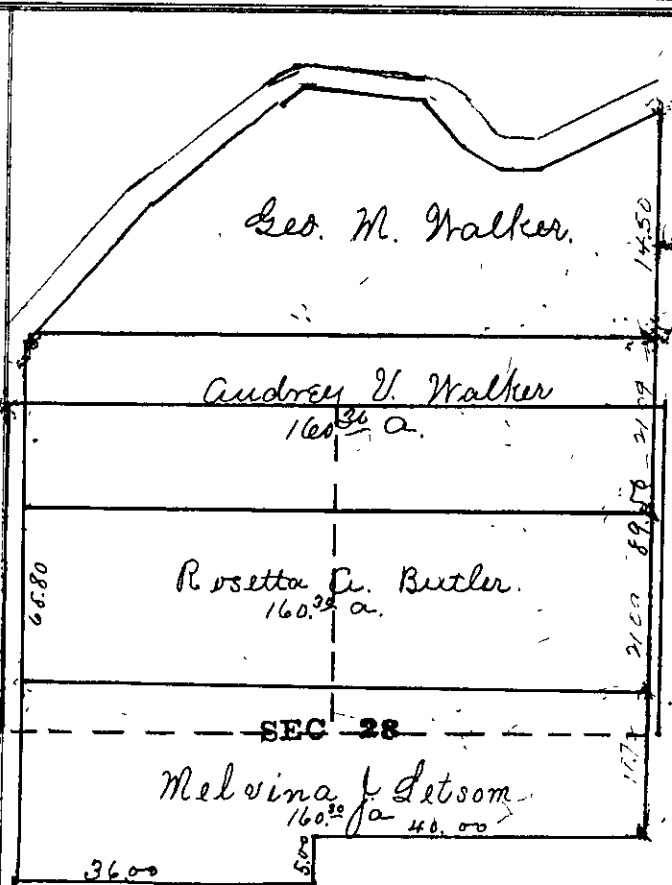


County Surveyor's Record, Douglas County, Oregon

Survey No. 23

Made for A. Walker



Township 22 South  
Range 8 West.

June 22 to 24  
1899.

A. Walker

SURVEY No. 23.

22.8

FE 11: 43 24-26

Begin at the N.W. cor. of the Wm Hathaway donation claim in Twp. 22 S. R. 8 W. (Var. 20° 50' E). South on claim line 28.50 stream course N.W.; 35.46 old Military wagon road, 39.25 present county road at 65.75 intersect N. of cor. East from cor. 36.00 set stone 20x16x8 for cor. North 5.00 to a post; East steep asc of mountain 3000 top of mountain 40.00 to a post for S.E. cor. of claim; North on E bdy 18.72<sup>7</sup> set post; 39.81 set post; 60.90 set post. 75.40 S.W. cor. of claim N=43, 88.70 to Umpqua River, old witness trees washed away, set post on bank of River without bearing trees. Did not meander river on account of heavy brush along river bank. — Begin at the S.W. cor of claim. 23.72 set post from which a double bl oak 15 ins bro. N 2° E. 3 lks. 44.81 set post. from which a wh oak 8 ins bro. N 40° E 207. 67.75 N.W. cor. of claim N=44. N. 44 3/4° E. 20 lks. set post. on meander line. The division lines were run with compass and blazed across claim. no chaining in cross lines