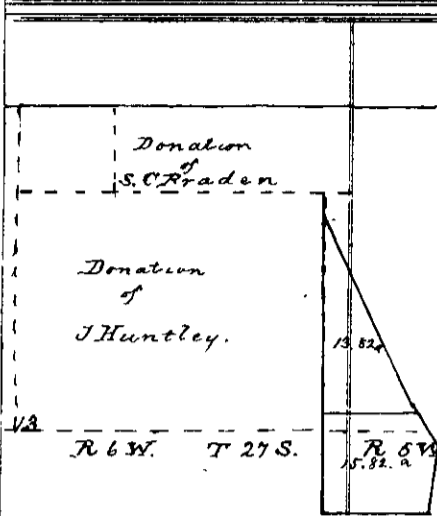


County Surveyor's Record, Douglas County, Oregon

Survey No. 19.

Made for

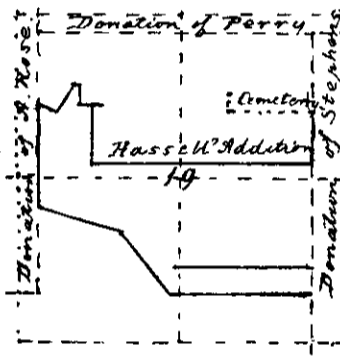


John Preschern and Julius Ambrun. May 30th 1899.

Begin at a point in the middle of the Co. Road, 2 9/16 chains South of the N.E. corner of J. Flundley donation, T. 27 S. R. 6 W. and run thence South, Var 19° 55' E. (it is cloudy with rain showers) along the fence, supposed to be on line 36 9/16 chains to corner of fences and a witness tree, thence East 12 5/8 chains to cor. of fences; thence N 12° E 8 1/8 chains to middle of Co. road, thence N 33° W 6 1/8 chains and N 24° W 26 1/8 chains to point of beginning.

At a point 24 9/16 South of beginning corner, I set a stone 10 x 8 x 6. and raised a mound of stone. Thence run East 11 1/8 chains and, 30 ft. West of proper place, I set a stone 14 x 10 x 8 and raised a mound of stone.

SURVEY No. 20



Nancy Jane Welker, and Henry Bushnell. June 2 and 3. 1899.

Var 20° 10' E Begin at N.W. cor. of Hassell's ~~addition~~ addition to Rosburg, set a post, from which a wh oak 12" bears S 13 1/2° W 20 lks dist. (this BT was made years ago) Thence S 6 1/8 chs set a post, thence East 27 1/2 chs. to West boundary of Stephens' donation, set post, from which a wh oak 30" dia. bears S. 65° E 62 lks, thence North 6 7/8 chs. to S.E. cor. of Cemetery. Go to S.E. cor. of the Land at intersection of wire fences, thence West 16 1/8 chs. set post, thence N. 38° 58' W. 9 1/8 chs, set a post, from which a bl. oak 12 dia. bears N. 75° E. 56 lks dist., according to deed. N. 74° 58' W. 11 1/8 chs to East boundary of Ross' donation, set a post, from which a bl oak 27" dia bears S. 89° E 117 lks dist. Thence North 12 1/8 chs. to North line of Washington Street, set post. Thence S 62° E 2 1/8 chs., set post, thence N. 28° E 4 3/8 chs., set post. Thence East 36 lks, set post. Thence South 174 lks set post, thence East 2 1/8 chs. set post, Thence South 75 lks to begin corner.

T. 27 S. R. 5 W.

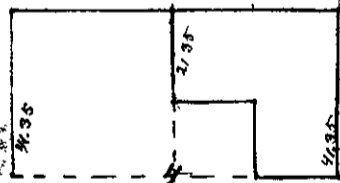
SURVEY No. 21

J 26 A R 30

County Road, June 5, 6 and 7. 1899.

Begin at a stone 15 x 12 x 6, which is 78 Rods and 8 feet South of 1/4 sec cor. between secs 1 & 2, T. 26 S. R. 3 W; thence run in a generally Northeasterly direction through lumbered very broken country, up Rock creek, 6 Miles and 1950 feet to a cedar 24" diam, near the middle of sect. 16, T. 26 S. R. 2 W, to a point, called "Brown" Pass". Var 19° 10' E.

SURVEY No. 22

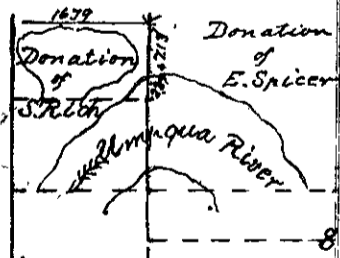


E. G. Young & Co. June 19. 1899.

Set 1/4 sec. corner bet. secs 33 & 4, T. 24 & 23 S. R. 5 W. Thence Var. 19° 55' E. South 21 35 chs., set a post from which a bl. oak 42" dia bears S 45° E 6 lks dist Thence S 89° 34' E 20 00 chs., set post, from which a fir 8" dia bears S 45° W. 5 lks dist. Thence South 20 00 chs. set post, from which a bl. oak 12" in dia. bears N. 15° E 10 lks dist. Thence S 89° 34' E 11.00 chs. Co. road. 2059 intersect S. 135 lks of 1/4 post between secs 4 and 3. Set 1/4 sec. post, thence North 20 00 chs. to cor. of secs 3 and 4, 33 and 34.

T. 24 S. R. 5 W.

SURVEY No. 25

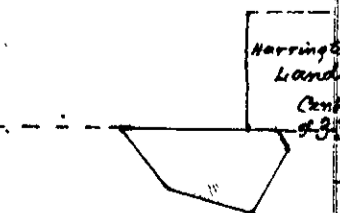


Albert Fless and John N. Hedden. July 25 1899.

Reset S.W. cor. of E. Spicer donation, then run North 9 00 chs., to left bank of Umpqua River, lay off base N. 66° E 7. 65 chs., thence flagg, a fir tree 30" diam. on N. bank of river, bears N 38° 34' W. making 11.83 chs. across. Cross river, find my flagg tree to be the bearing tree to the witness cor. of the N.E. corner of the S. Rich' donation. Reset said corner, by setting a stone and raising a mound of stone. Thence go, North 7 1/2 chs., set a post, from which S.E. cor of Hedden's barn bears N. 18° W. 128 lks. distant; thence run West 14.00 chs foot of hill, set witness post. 2.79 chs East of true corner; at foot of mountain.

T. 22 S. R. 9 W.

SURVEY No. 26



William Vail, Sept. 18. 1899.

From ~~S.W.~~ N.W. corner of Harrington's land, Var. 20° 5' E. I run South; at 14.02 intersect his S.W. cor. post standing. Thence West 15.50 chs. to N.E. side of Co. road, thence along side, S. 41 1/4° E. 9.00 chs. and S. 75° E 10 1/2 chs to E.W. Peter's land corner, set post, from which a wh oak 42" dia bears N. 76° W. 2 1/2 chs. dist. Return to Harrington corner and run East 3.74 set post N. 1, and 10. 1/8 to center cor. of middle of sec. 33., return to post N. 1. and run S. 33 1/4° E 2.35. chs., set a post and mound of stone, and thence run S 30° W. 8.21 chs to Peter's corner.

T. 24 S. R. 5 W.

SURVEY No. 27

County Road, Septbr. 25. 1899.

Begin 6.73 chs. S. of N.W. corner of Claim No. 41 in section 15 T. 22 S. R. 6 W.; run thence in a N.W. by direction Var. 20° 40' E. to a point 14 1/8 chs. West of N.E. cor. of Claim No. 39, being 56 1/8 chs in length.