

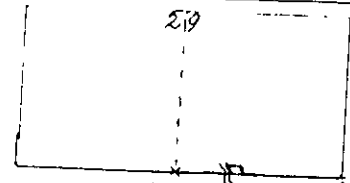
Jan 24 & 25 1900

Establishing of County line between Douglas and Lane Counties. At the January term of the County Court, it was ordered that the County Surveyor of Douglas and Lane, meet at some future date, at the Divide and establish the line 1/2 mile North and South of railroad. Fieldnotes and plat of survey were filed with County Clerk

Township 21 South Range 4 West.

SURVEY No. 3

W L Cobb & W Phillips Febr 13 1899

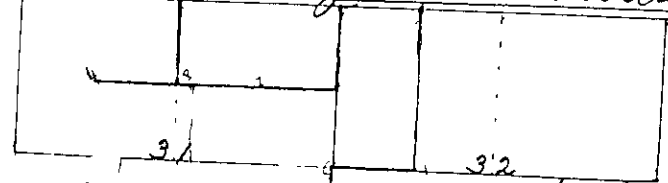


T 28 S R 6 W.

Set corner of secs 28, 29, 32 and 33. This stands 12 lks N of another post. Cross river to upper in, but it is rotten at about 40 years new growth, no ash. Set corner of secs 29, 30, 31 and 32, thence run N 89° 51' E, and at 40 chs set temp 1/4 sec cor, at 40.25 chs fence and 60 road. J. Dillard now testifies that he has seen the letters on the maple and also 1/4 sec cor, and that he has buried a bottle in the place of the post. I sight and measure from the maple as given in the fieldnotes of U.S. survey, and by digging find the bottle. Reestablish 1/4 sec cor by burying a brick and raising a mound of stone. Thence N. 89° 40' E, at 53 chs. river bank. Var 20° 10' E., true line. Begin in centre of RR on true line S 89° 40' W 3. 75 chs to outside of fence, at 3 3/4 I buried a part of an iron nail and a bottle, thence Var 20° 10' E N 6° W 2 5/8 chs through marked with lat. S 84° 10' W 6 5/8 chs, to edge of high bank of river, thence S 35° E 2 3/8 chs

SURVEY No. 4

Anna Kene & John McClelland Febr 14 & 15 1899

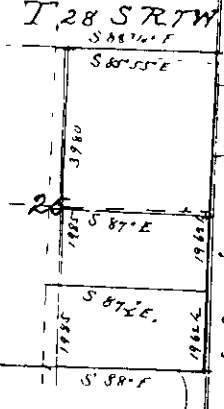


T 28 S. R. 6 W.

At 20 13 chs. S 89° 50' E (as found by above survey) set post, from which a bl oak 15" dia bears S 30° 10' W, 65 lks dist, thence I run S 20° 20' W a bl iron and stone, from which a bl oak 8" dia bears S 32° E 127 chs dist at 40 chs. Set temp post No. 1. From cor to secs 29, 30, 31 and 32, I run Var 20° 10' E South 20° chs, set a stone 42" x 18" x 6"; thence West, setting temp post No. 2 at 20, No. 3 at 40, and No. 4 at 60 chs. Thence I run South from 1/4 sec. cor betw. secs 30 and 31, and at 20 18 chs intersect 66 lks West of temp post No. 3. Move temp post No. 4 N 18 lks and W 66 lks, from which a laurel 8" dia bears N 46° S 24 lks dist. Move temp post No. 2 N. 9 lks and W 33 lks. Set a stone for 1/4 cor between secs 31 and 32, thence run South 20 chs and set a post, from which a bl oak 18" diam bears S 62 1/2° W 23 lks dist, - also run from same 1/4 sec post, East and at 20 3/4 chs intersect line 1 1/4 chs South of temp post No. 1, set a post and mound of stone, from which a wh oak 9" diam. bears N 52 1/2° W 48 lks dist

SURVEY No. 5

Newton J Richards and F. W. Parker Febr 16 & 17 1899



Set post to cor of sec 36 and 25, R 7 W and 30 and 31, R. 6 W, old rock cor. and fence is West 10 lks. Thence I run North Var. 20° 15' E, at 20 3/8 chs set temp. post No. 1, at 40. 3/8 intersect 1/4 sec cor, which I reestablish by setting a post. From same cor. I run also West, at 39. 3/8 intersect line 140 lks S of 1/4 sec. cor. between secs. 25 and 36. I go back 10 00 chs. East, for better ground, and run North; at 20 and 40 chs. set temp. posts No. 2 and 3, at 79. 45 chs. intersect 9 3/8 chs. E of 1/4 post bet. secs. 25 and 24. Thence run E. and intersect 106 lks. N. of cor of secs 24, 25, 19 and 30. Move temp. post No. 1. North 12 1/2 lks, set post, from which a bl oak 30" dia bears S 60° W 103 chs dist, a bl oak 18" dia bears N 10 1/2° W 113 lks dist. Thence run S. 50 lks. set post and run N. 87° 30' W. intersect 12 1/2 lks S of temp post No. 2, thence N 87° 30' W. 9. 97 chs. set post, threw up mound and dug pits. Move temp. post No. 3 South 25 lks; run thence N. 87° W 9. 97 chs, set post, from which a wh oak 8" dia. bears N. 7 1/2° W 99 lks, a bl oak 10" dia bears N 88 1/2° E 158 lks dist. Set a post 1 1/2 chs South of 1/4 post between secs 25 and 30