

County Surveyor's Record, Douglas County, Oregon

Survey No. 1

Made for David J. Brenot

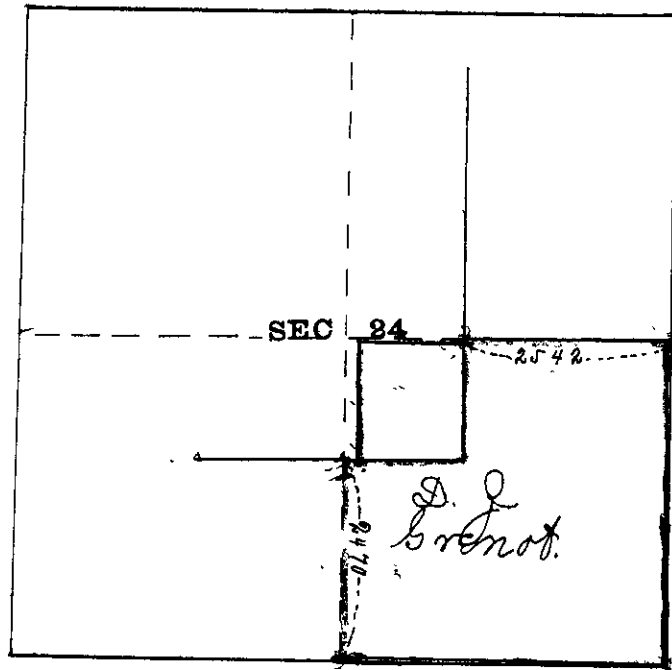
Jan 13th 1899

T. 27 S. R. 7 W.
FC 112 Pg 1-2

Begin at the cor. to secs. 19, 30, 24 & 25, Twp. 27 S. R. 7 W. (V. ar. 20° 10') and run S 85° 56' W. bet 24 & 25 to 1/4 sec. cor, set a white oak post and remarked old bearing trees. North from 1/4 cor. descend N slope of hill through small oak timber at 24.70 chns. intersect the S line of the W. Marin donation claim 1.92 chns. N. of S.E. cor. set a white oak post from which a white oak 5 ins bro S 57° E. 16 lks dist.

" " " 6 " " S 1° W. 42 " " North from S.E. cor of sec 24 on township line ascend, 3.50 chns top descend on NW slope small oak grove 40.04, 1/4 sec cor. S 85° 56' W from 1/4 cor. descend at 25.42 chns intersect 5 lks N. of Claim cor. set a laurel post from which a laurel 7 ins bro N. 67° W 32. lks dist.

Chainmen Chas. Critzer and W. Cozack



Township 27 South
Range 7 West.

24.70
15.24
39.94