

County Surveyor's Record, Douglas County, Oregon

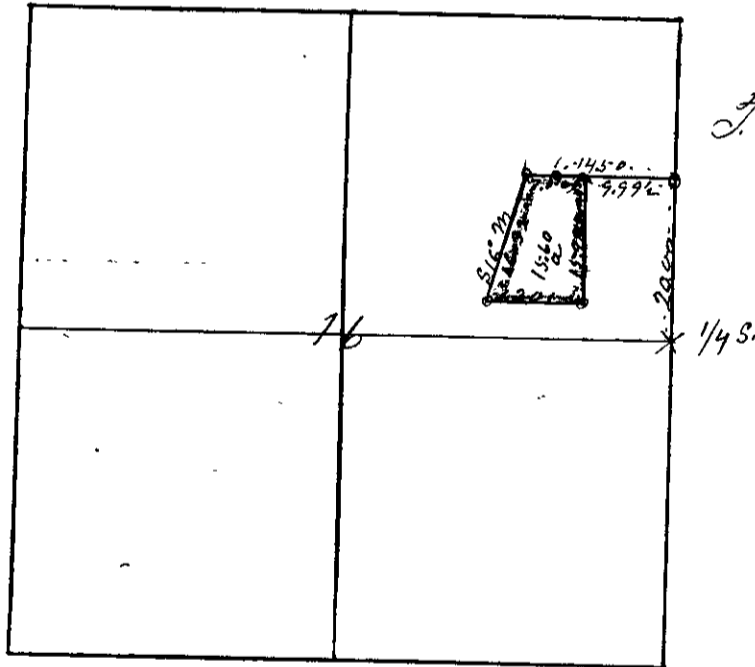
Survey No. 29

Made for Davenport & Simpson

Jan 6 1894

27-6

Beginning at 14.50 ch N 89° 55' W of and 20.00 ch North
 of 1/4 S corner between 15 & 16. T 27 S, R. 6 W. M. Or
 Set post marked C.S. — Var 20 1/2 E.
 Thence N 89° 55' W. 4.00 ch to post on edge of low bank
 of S Umpqua river marked C.S.
 Thence S 18° W. 16.32 ch to post marked C.S. on edge
 of low bank.
 Thence S 89° 55' E. 12.01 ch to post marked C.S.
 Thence North 15.98 ch. to post marked C.S.
 And Thence N 89° 55' W. 3.50 ch to place of beginning
 Cont 15.66 acres



T 27 S, R. 6 W

W. H. Briggs
Co Sur