

Survey No. A.L. 6

Made for W. N. Moore

WESTON DYCK BOOK MFG. CO., PORTLAND, OR. 88444

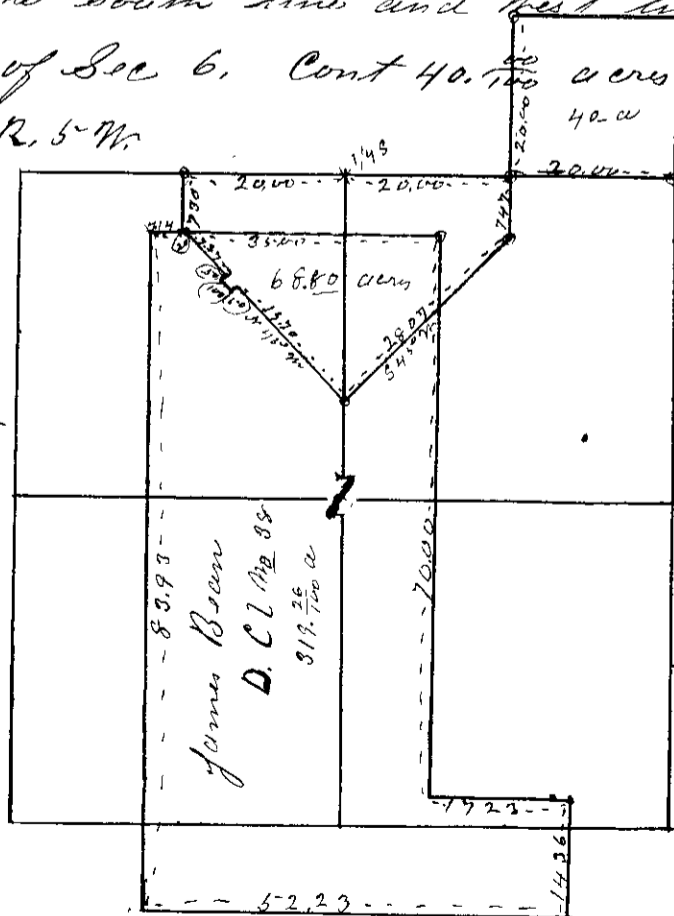
Nov 16x17 1893 Beginning at a point 4.14 ch East of the N.W. corner of  
 72x125... James Bean Donation of No 38. T. 29, S. R. 5 W. M. Co.  
 Set post marked C.S. from which  
 W Oak 4 in dia bears S 72° E. 40 ths marked C.S. B.T.  
 " " 4 " " N 38° E. 26 " " C.S. B.T.  
 Dec 19° E.

Thence West 0.20 ch set post marked C.S.  
 Thence North 7.30 ch set post marked C.S. - from which  
 B Oak 24 in dia bears S 14° E. 40 ths marked C.S. B.T.  
 Thence N 83° 47' E. 2.00 ch 1/4 S cor at 40.00 ch. set post marked C.S.  
 W Oak 16 in dia bears N 13° E. 14 ths marked C.S. B.T.  
 " " 12 " " " S 5 1/2° W. 37 " " C.S. B.T.  
 Thence South 7.47 ch set post marked C.S. - from which  
 B Oak 16 in dia bears S 2° W. 26 ths marked C.S. B.T.  
 Thence S 45° W. 28.07 ch to post marked C.S.  
 Thence N 45° W. 19.70 ch to W Oak 6 in dia marked C.S.  
 Thence S 45° W. 0.50 ch to stake. Thence N 45° W. 1.00 ch to stake  
 Thence N 45° E. 5.00 ch to stake. And thence N 45° W. 7.37 ch  
 to place of beginning Cont 68.80 acres

Also run the south line and West line of the S.E. 1/4 of  
 the S.E. 1/4 of Sec 6. Cont 40.00 acres  
 T. 29, S. R. 5 W.

S. Aston &  
 W. N. Moore  
 Surveyors

W. L. Briggs  
 Co Sur

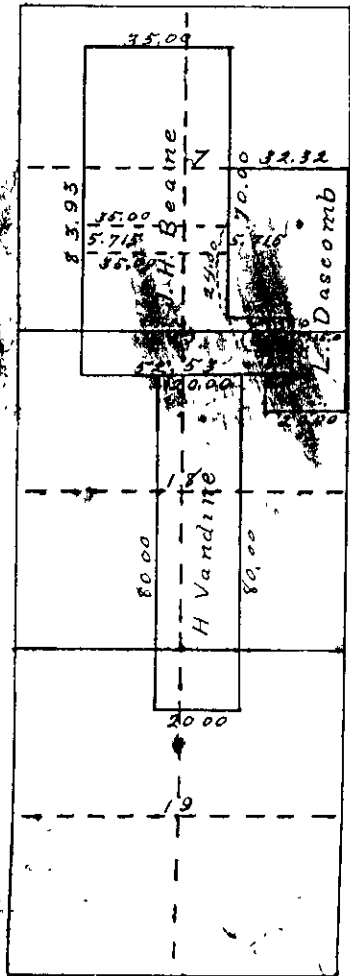


Nov 16+17/10

T295.1511

Pg. 16

T29-5



Vol 2 Pg. 16 A