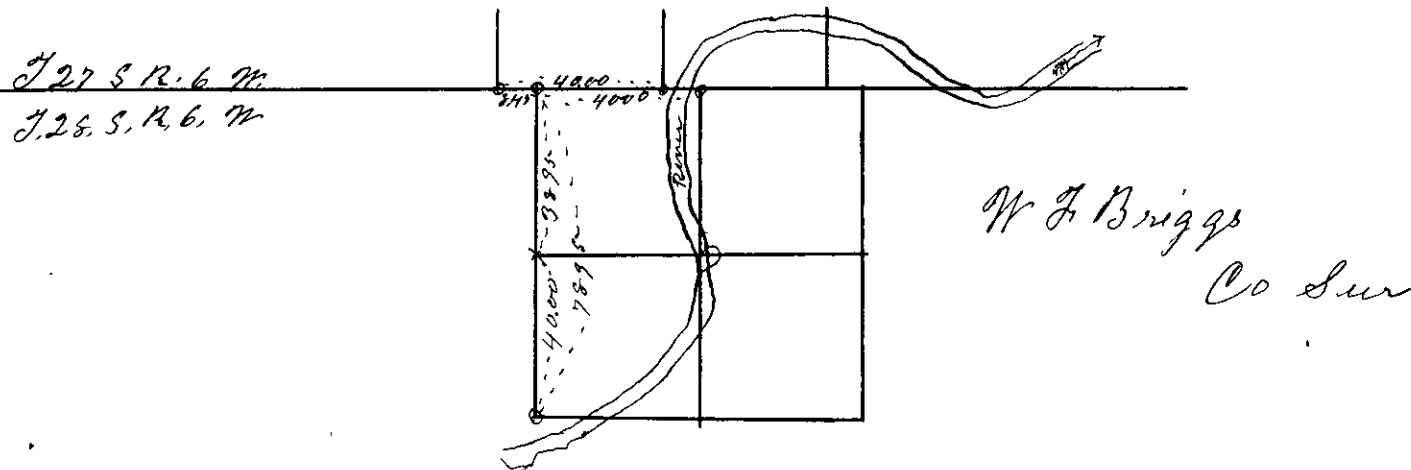


Survey No. ....

Made for.....



Survey No 13

Made for Buxton & Brimmer

Aug 30<sup>th</sup> 1873  
T. 28 S. R. 6 W.

Beginning at a point N 55° 40' E 18.52 ch from the quarter corner between Sec 17 & 18. T. 28 S. R. 6 W. W. M. Cuzner  
Set a post marked C.S. - var 19° 20' E.  
Thence South 61.77 ch to rock corner in County road  
Thence N 89° 40' E. 29.75 ch to rock corner in County road  
Thence North 61.77 ch to post marked C.S.  
Thence S 89° 40' W. 29.75 ch to place of beginning Cont 183<sup>76</sup>/<sub>100</sub> a

Thence from a point 17.00 ch South of corner to Secs 16, 17, 20 & 21. T. 28 S. R. 6 W. Thence North on sec line bet sec 20 & 21 16 & 17- 57.00 ch to 1/4 S corner bet- Secs 16 & 17.  
Thence S 89° 40' W. 30.86 ch to post marked C.S.  
Thence South 61.77 ch to rock cor in County road.  
Thence N 89° 40' E. 7.73 ch to a point in county road  
Thence South 30 ch to rock cor. 250 ch N. of N.W. cor of Belle  
And thence N 78° E. 23.71 ch to place of beginning  
Cont 183<sup>76</sup>/<sub>100</sub> Set post marked C.S. - from which  
B Oak 24 in dir bears N 60° E 277 lbs marked C.S. BT  
" " 4 " " N 11° W. 107 " " C.S. BT

