

Field Book # 88

TOWNSITE

REGENCY

88

FIELD BOOK

No. 403 T

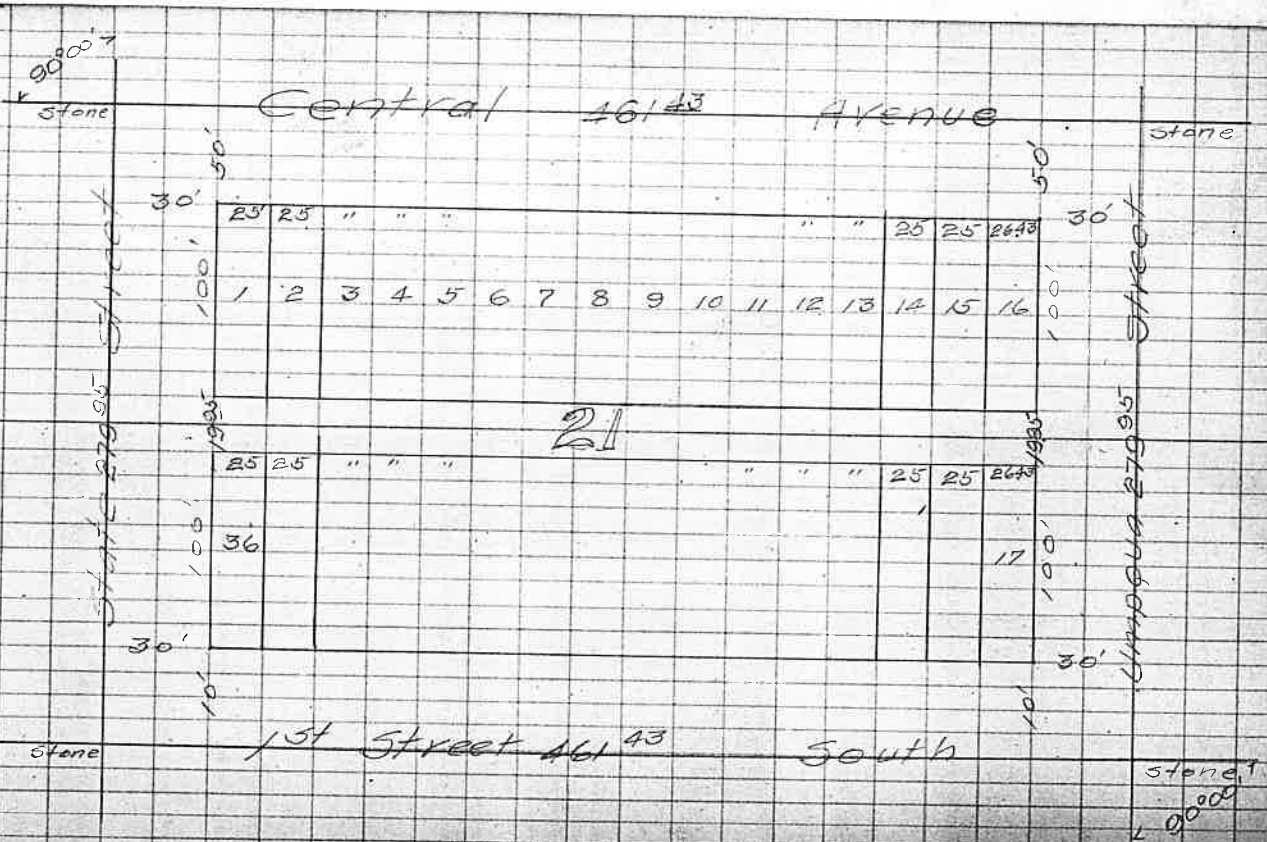
Resurvey of Block 21.

Note

All Surveying from Central Avenue south to Boundary as a base line. In all cases the 90° checks perfectly as well as the Oblique angles. The measurements check consistently allowing for 1000' of the errors. The insignificant distances for plots and lots have been carried throughout.

After setting Block Corners Refner and party installed lot stakes checking measurements and angles consistently.

C.A. Richardson



Stone

Central Avenue

Stone

570 29

Williamette Street
279 95

Williamette Street
279 95

30'

50'

30 11

" 30 30 30 30"

30'

100'

1 2 3 4 5

16 17

100'

45

100'

34 33 32

20 19 18

100'

30'

30 "

" 30 30 30"

30'

Stone

570 29

Stone

1st Street South

Resurvey of Block 43

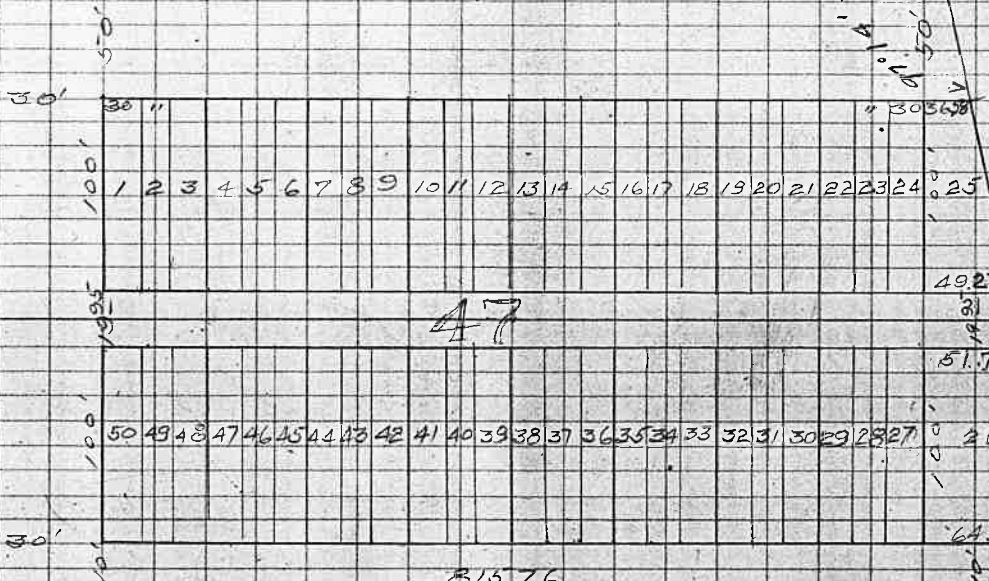
Stone

Central Avenue

780.23

Stone

Union Street
279.95



47

Stone

815.76
1st Street South

Stone

Resurvey of Block 47

Everett
Central Avenue

stone

stone

461 43

State Street
195°

30'

30'

30'

30'
195°

25"

" 25 2643

7 50'

7 50'

1 2 3 4 5 6 7 8 9 10 11 12 13 14 15 16

22

South

25"

461 43.

" 25 2643

30'
Boundary

Resurvey of Block 22

stone

1st Street South.
57029

stone

Willamette St.

30'

30'

30'

30''

30'' 30''

30'

100'

1 2 3 4 5 6 7 8 9 10 11 12 13 14 15 16 17

100'

46

stone

2nd Street South.
57029

stone

20'

20'

30'

30'

30''

30'' 30''

stone

30'

30''

18 19 20 21 22 23 24 25 26 27 28 29 30 31 32

stone

Putterlin Creek

stone

30'

30'

30''

30''

30''

30''

30''

30''

30''

30''

30''

30''

30''

30''

30''

30''

30''

30''

30''

30''

30''

30''

30''

30''

30''

30''

30''

30''

30''

30''

30''

30''

30''

30''

30''

30''

30''

30''

30''

30''

30''

30''

30''

30''

30''

stone

stone

stone

stone

stone

stone

stone

stone

stone

stone

stone

stone

stone

stone

stone

stone

stone

stone

stone

stone

stone

stone

stone

stone

stone

stone

stone

stone

stone

stone

stone

stone

stone

stone

stone

stone

stone

stone

stone

stone

stone

stone

stone

stone

stone

stone

stone

stone

stone

stone

stone

stone

stone

stone

stone

stone

stone

stone

stone

stone

stone

stone

stone

stone

stone

stone

stone

stone

stone

stone

stone

stone

stone

stone

stone

stone

stone

stone

stone

stone

stone

stone

stone

stone

stone

stone

stone

stone

stone

stone

stone

stone

stone

stone

stone

stone

stone

stone

stone

stone

stone

stone

stone

stone

stone

stone

stone

stone

stone

stone

stone

stone

stone

stone

stone

stone

stone

stone

stone

stone

stone

stone

stone

stone

stone

stone

stone

stone

stone

stone

stone

stone

stone

stone

stone

stone

stone

stone

stone

stone

stone

stone

stone

stone

stone

stone

stone

stone

stone

stone

stone

stone

stone

stone

stone

stone

stone

stone

stone

stone

stone

stone

stone

stone

stone

stone

stone

stone

stone

stone

stone

stone

stone

stone

stone

stone

stone

stone

stone

stone

stone

stone

stone

stone

stone

stone

stone

stone

stone

stone

stone

stone

stone

stone

stone

stone

stone

stone

stone

stone

stone

stone

stone

stone

stone

stone

stone

stone

stone

stone

stone

stone

stone

stone

stone

stone

stone

stone

stone

stone

stone

stone

stone

stone

stone

stone

stone

stone

stone

stone

stone

stone

stone

stone

stone

stone

stone

stone

stone

stone

stone

stone

stone

stone

stone

stone

stone

stone

stone

stone

stone

stone

stone

stone

stone

stone

stone

stone

stone

stone

stone

stone

stone

stone

stone

stone

stone

stone

stone

stone

stone

stone

Stone.

1st Street South

30'

81576

stone

30'

30'

30 "

" 30 6851

28000

100'

1 2 3 4 5 6 7 8 9 10 11 12 13 14 15

25 26

100' 100' 100' 100'

30

48

8226

30 "

" 30 8480

100'

52 51 50

28 27

30'

30

9749

Stone

2nd Street 851³⁰ South

30' Stone

Stone

2nd Street South.
851 35

Stone

Umatilla St

584.77
132.27

206.28

206.28

206.28

206.28

365.67

1.

444.57

2.

3.

4.

528.47

602.37

East
485.58

Limit

Stone

Stone

Stone

220.85

220.85

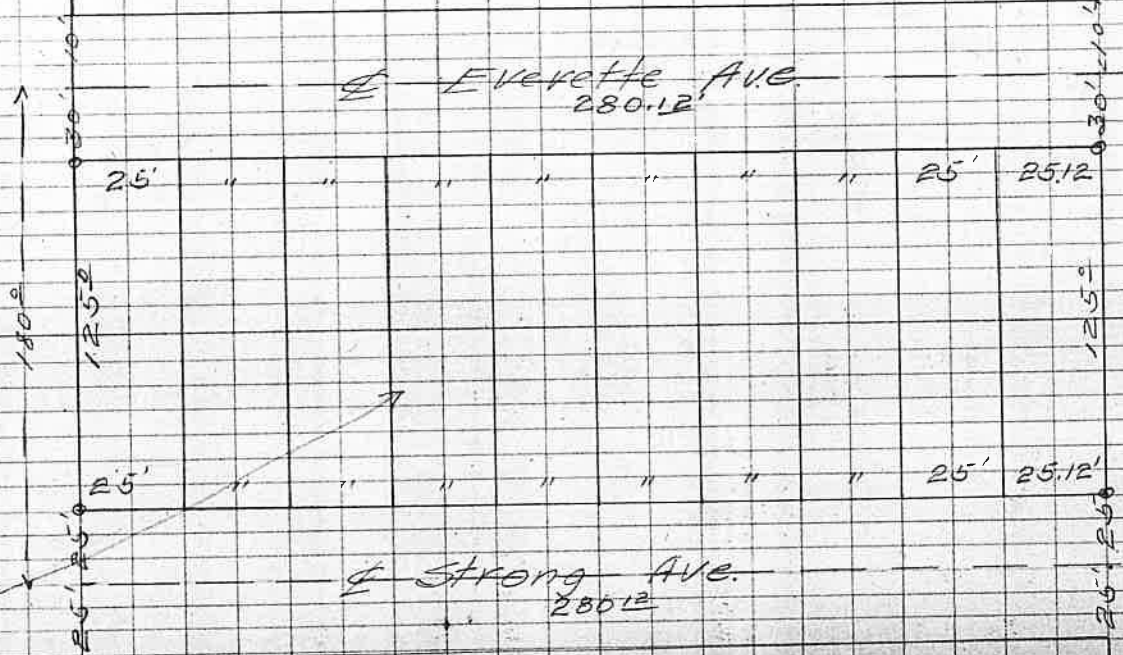
220.85

765.44

Sutherland Creek

Block
A1

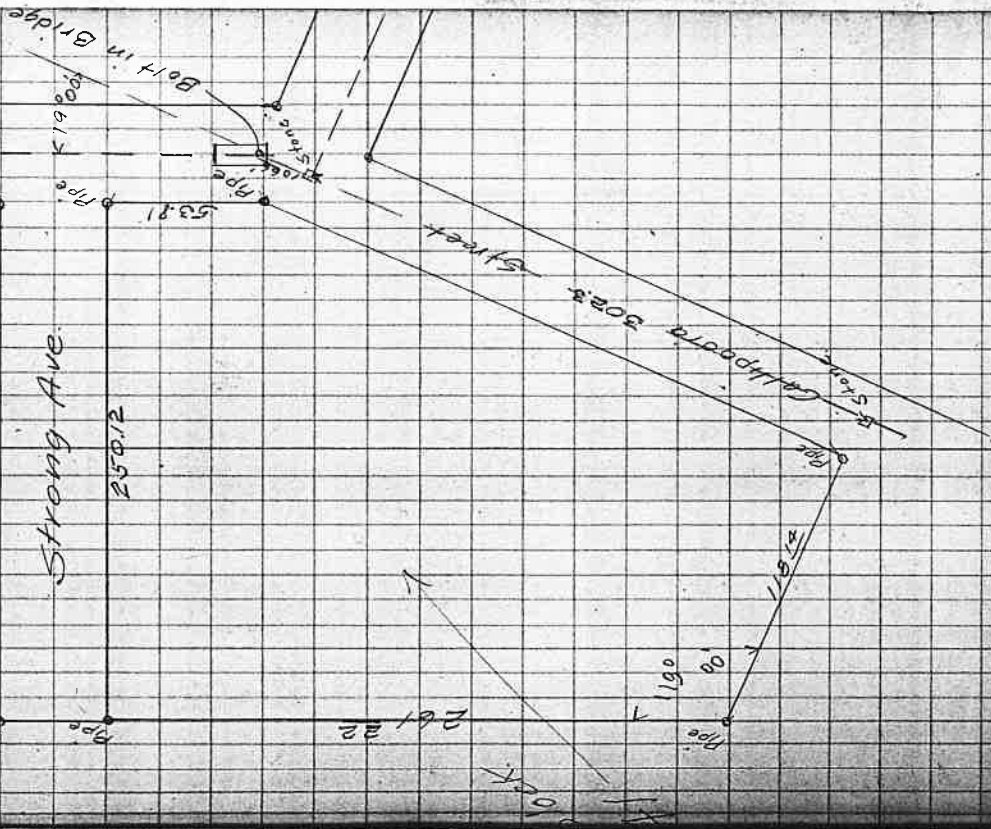
Sutherland Lumber Mfg Co.



Everette Ave.
280.12'

Strong Ave.
280.12'

California Street Stone



Stone

302 3

Stone

277 3

Oak Street
533 6

Lot 2 BKR
Lot C

676 08

Stone

Pipe

120

54

5

13

40

1572

73

40

Stone

Pipe

Stone Callipeoia Street Stone

□

3300

□

o Pipe

o

o Pipe

Lot. 2 BIK. 2. Plat. C.

626°8

o Pipe

Lot. 3 BIK. 2. Plat. C.

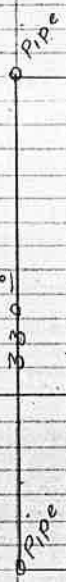
722°79

13°18

13°10

o Pipe

Stone Callippolis Street Stone



727 79

Lot 4 B.K.E. Plate

819 50



343 87

173° 20'

