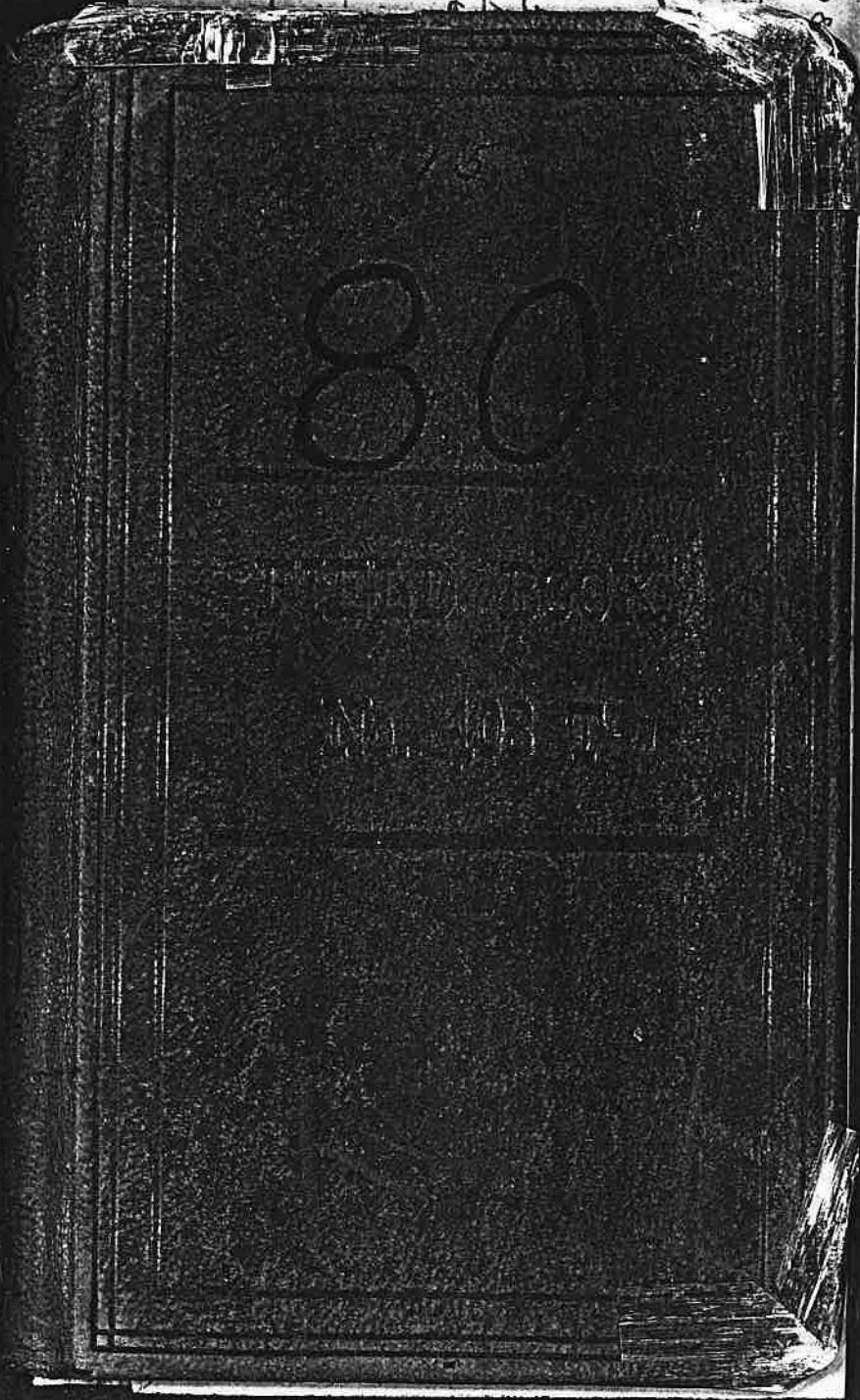


Field Book # 80

28
5
6
5
5
2
4
2
4.5



EUGÈNE DIETZGEN CO.,

Drawing Materials and Surveying Instruments
 NEW YORK. CHICAGO. SAN FRANCISCO.

TABLES FOR EXCAVATIONS AND EMBANKMENTS
 DISTANCES FROM CENTER OF ROADWAY FOR CROSS-SECTION
 ROADWAY 20 FEET WIDE. SIDE SLOPES 1 TO 1.
 FOR SINGLE TRUCK EXCAVATION.

Copyright 1908, by Eugene Dietzgen Co.

	0	.1	.2	.3	.4	.5	.6	.7	.8	.9
0	10.0	10.1	10.2	10.3	10.4	10.5	10.6	10.7	10.8	10.9
1	11.0	11.1	11.2	11.3	11.4	11.5	11.6	11.7	11.8	11.9
2	12.0	12.1	12.2	12.3	12.4	12.5	12.6	12.7	12.8	12.9
3	13.0	13.1	13.2	13.3	13.4	13.5	13.6	13.7	13.8	13.9
4	14.0	14.1	14.2	14.3	14.4	14.5	14.6	14.7	14.8	14.9
5	15.0	15.1	15.2	15.3	15.4	15.5	15.6	15.7	15.8	15.9
6	16.0	16.1	16.2	16.3	16.4	16.5	16.6	16.7	16.8	16.9
7	17.0	17.1	17.2	17.3	17.4	17.5	17.6	17.7	17.8	17.9
8	18.0	18.1	18.2	18.3	18.4	18.5	18.6	18.7	18.8	18.9
9	19.0	19.1	19.2	19.3	19.4	19.5	19.6	19.7	19.8	19.9
10	20.0	20.1	20.2	20.3	20.4	20.5	20.6	20.7	20.8	20.9
11	21.0	21.1	21.2	21.3	21.4	21.5	21.6	21.7	21.8	21.9
12	22.0	22.1	22.2	22.3	22.4	22.5	22.6	22.7	22.8	22.9
13	23.0	23.1	23.2	23.3	23.4	23.5	23.6	23.7	23.8	23.9
14	24.0	24.1	24.2	24.3	24.4	24.5	24.6	24.7	24.8	24.9
15	25.0	25.1	25.2	25.3	25.4	25.5	25.6	25.7	25.8	25.9
16	26.0	26.1	26.2	26.3	26.4	26.5	26.6	26.7	26.8	26.9
17	27.0	27.1	27.2	27.3	27.4	27.5	27.6	27.7	27.8	27.9
18	28.0	28.1	28.2	28.3	28.4	28.5	28.6	28.7	28.8	28.9
19	29.0	29.1	29.2	29.3	29.4	29.5	29.6	29.7	29.8	29.9
20	30.0	30.1	30.2	30.3	30.4	30.5	30.6	30.7	30.8	30.9
21	31.0	31.1	31.2	31.3	31.4	31.5	31.6	31.7	31.8	31.9
22	32.0	32.1	32.2	32.3	32.4	32.5	32.6	32.7	32.8	32.9
23	33.0	33.1	33.2	33.3	33.4	33.5	33.6	33.7	33.8	33.9
24	34.0	34.1	34.2	34.3	34.4	34.5	34.6	34.7	34.8	34.9
25	35.0	35.1	35.2	35.3	35.4	35.5	35.6	35.7	35.8	35.9
26	36.0	36.1	36.2	36.3	36.4	36.5	36.6	36.7	36.8	36.9
27	37.0	37.1	37.2	37.3	37.4	37.5	37.6	37.7	37.8	37.9
28	38.0	38.1	38.2	38.3	38.4	38.5	38.6	38.7	38.8	38.9
29	39.0	39.1	39.2	39.3	39.4	39.5	39.6	39.7	39.8	39.9
30	40.0	40.1	40.2	40.3	40.4	40.5	40.6	40.7	40.8	40.9
31	41.0	41.1	41.2	41.3	41.4	41.5	41.6	41.7	41.8	41.9
32	42.0	42.1	42.2	42.3	42.4	42.5	42.6	42.7	42.8	42.9
33	43.0	43.1	43.2	43.3	43.4	43.5	43.6	43.7	43.8	43.9
34	44.0	44.1	44.2	44.3	44.4	44.5	44.6	44.7	44.8	44.9
35	45.0	45.1	45.2	45.3	45.4	45.5	45.6	45.7	45.8	45.9
36	46.0	46.1	46.2	46.3	46.4	46.5	46.6	46.7	46.8	46.9
37	47.0	47.1	47.2	47.3	47.4	47.5	47.6	47.7	47.8	47.9
38	48.0	48.1	48.2	48.3	48.4	48.5	48.6	48.7	48.8	48.9
39	49.0	49.1	49.2	49.3	49.4	49.5	49.6	49.7	49.8	49.9
40	50.0	50.1	50.2	50.3	50.4	50.5	50.6	50.7	50.8	50.9

Calculated by F. E. Parads, C. E.

The Sutherland Land
 & Water Company's
 Transit Field Book 475

67°54'

844

1/2 1/2 1/2



INDEX

Description	Page
Flat K - Exteriors	X1-4-11-12-13-7
Plot K - Sub-Div.	X5-6-20-21-86-20-21
Plot B - Sub-Div.	X8-10-77-17-14-16-15
Plot A Flowing	X9
Plot D	X10-77-17-14-16-15
Archambeau	X15-42
Sub-Div. SE 1/4 SE 1/4 SW 1/4	X18
Minniford Place	X32-40 incl.
W. Parthen Stone Quarry	X41-42
Plot J	X44
Heldens on P. A. Dec.	X46
Reservoir - Smith's Canyon	X47-58 incl.
Plot K - Sub-Div.	X5-6-20-21-86-20-21
Plot B - Sub-Div.	X8-10-77-17-14-16-15
Plot A Flowing	X9
Plot D	X10-77-17-14-16-15
Archambeau	X15-42
Sub-Div. SE 1/4 SE 1/4 SW 1/4	X18
Minniford Place	X32-40 incl.
W. Parthen Stone Quarry	X41-42
Plot J	X44
Heldens on P. A. Dec.	X46
Reservoir - Smith's Canyon	X47-58 incl.
Plot K - Sub-Div.	X5-6-20-21-86-20-21
Plot B - Sub-Div.	X8-10-77-17-14-16-15
Plot A Flowing	X9
Plot D	X10-77-17-14-16-15
Archambeau	X15-42
Sub-Div. SE 1/4 SE 1/4 SW 1/4	X18
Minniford Place	X32-40 incl.
W. Parthen Stone Quarry	X41-42
Plot J	X44
Heldens on P. A. Dec.	X46
Reservoir - Smith's Canyon	X47-58 incl.

Page

Index

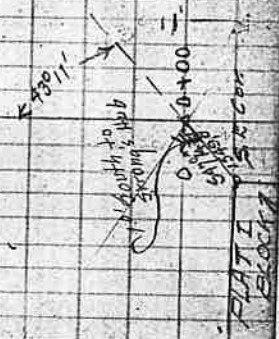
The image shows two pages of a notebook with a grid pattern. The top page is mostly blank, with the word 'Page' written vertically in the left margin. The bottom page has some very faint, illegible handwritten notes in the left margin, possibly including the word 'Index'. The grid consists of small squares, and the paper appears aged and slightly worn.

2.65' North to Stones
 30+55.1 → N.E. Cor. C. 50

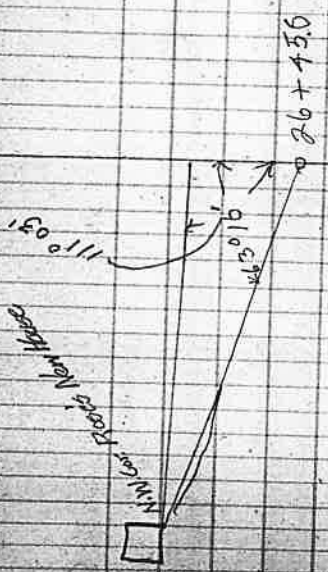
Oct 15, 1910
 Weirsteel, N.
 Fleser, J.
 Billings, J.
 Test, P.
 Cooper, A.C.

Sta.	North Boundary	Dist. A.C.	FLAT #	C.I. #	Δ R.	G.G.	M.C.
30+55.1							
29+76.7							
27+00.8							
25+61.6							
22+91.5							
17+30.3							
13+63.8							
12+00.8							
10+63.0							
0+10.4							
5+31.4							
0+00 = 10' North of Strong's Hub							

N 89° 55' E
 295.67

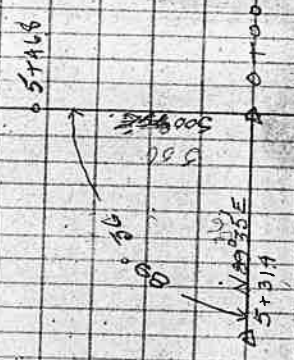


Sta.	West Dist	Boundary AL	PLAT A Boundary C.I.50	M.
28+12.1			C.C.	M.
26+45.8			500°49'E	
23+97.7			" "	
22+35.8			" "	
20+08.2			" "	
17+72.5			" "	
16+02.5			" "	
13+05.7			" "	
11+25.5			" "	
8+60.7			" "	
5+46.8			500°41'E	
0+00 = 10' North of strong				



Oct 13, 1910
 Worstell K
 Flesher }
 Billings }
 Test }
 Cooper }
 Axs

0°3'R



0+00 = 10' North of strong

50°46'R

3.

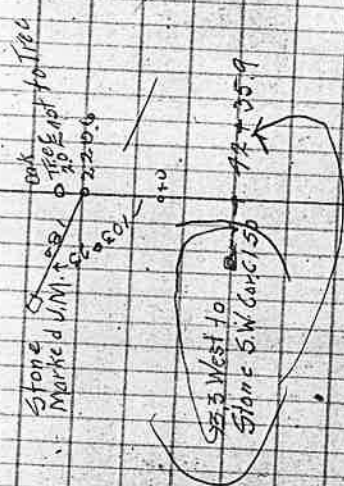
Oct. 17, 1910

Worstell
Fleser
Billings
Test
Cooper

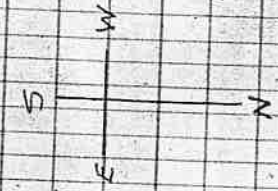
East Boundary PLAT A

M.C.

Sta.	Dist	AL	AR	C.C.	M.C.
8+21.3				" "	
3+596				" "	
1+91.0			90.09'	N 89° 56' W	
4x stone 13x13 1/2 Cor bet 19 th & 24 th R 485 W				500055	
11+43.3				" "	
5+91.5				" "	
1+85.0				" "	
0+82.0				" "	
0+00 2+20.6			85.0'	50005E	
0+00 42+35.9			84° 26'	585135	
37+35.6				50004E	
31+08.9				50004E	



BLOCK 3
PLAT K



BLOCK 3
PLAT I

LOT 500^{43E}
922.7 1451.8
LINE 629.3

BLOCK 7
PLAT I

Nov 16, 1910
Worstell
Fischer
Billings
Carmen
Test
Kongorak
4 Hours
Subdividing

Oct 15, 1910

Worstell
Fischer
Billings
Test
Cooper

11355
11355
990.0
990.0
990.0
990.0
990.0

16910

816.11
1440.7
625.2

55811

990.0

990.0

990.0

990.0

990.0

990.0

990.0

990.0

990.0

990.0

990.0

990.0

990.0

BLOCK 3
PLAT K

Survey

Block

11355

11355

990.0

990.0

990.0

11355

11355

990.0

990.0

990.0

990.0

11355

11355

990.0

990.0

990.0

990.0

11355

11355

990.0

990.0

990.0

990.0

11355

11355

990.0

990.0

990.0

990.0

11355

11355

990.0

990.0

990.0

990.0

11355

11355

990.0

990.0

990.0

990.0

11355

11355

990.0

990.0

990.0

990.0

11355

11355

990.0

990.0

990.0

990.0

11355

11355

990.0

990.0

990.0

990.0

11355

11355

990.0

990.0

990.0

990.0

11355

11355

990.0

990.0

990.0

990.0

11355

11355

990.0

990.0

990.0

990.0

11355

11355

990.0

990.0

990.0

990.0

11355

11355

990.0

990.0

990.0

990.0

11355

11355

990.0

990.0

990.0

990.0

11355

11355

990.0

990.0

990.0

990.0

11355

11355

990.0

990.0

990.0

990.0

11355

11355

990.0

990.0

990.0

990.0

11355

11355

990.0

990.0

990.0

990.0

11355

11355

990.0

990.0

990.0

990.0

11355

11355

990.0

990.0

990.0

990.0

11355

11355

990.0

990.0

990.0

990.0

11355

11355

990.0

990.0

990.0

990.0

11355

11355

990.0

990.0

990.0

990.0

11355

11355

990.0

990.0

990.0

990.0

11355

11355

990.0

990.0

990.0

990.0

11355

11355

990.0

990.0

990.0

990.0

11355

11355

990.0

990.0

990.0

990.0

11355

11355

990.0

990.0

990.0

990.0

11355

11355

990.0

990.0

990.0

990.0

11355

11355

990.0

990.0

990.0

990.0

11355

11355

990.0

990.0

990.0

990.0

11355

11355

990.0

990.0

990.0

990.0

11355

11355

990.0

990.0

990.0

990.0

11355

11355

990.0

990.0

990.0

990.0

11355

11355

990.0

990.0

990.0

990.0

11355

11355

990.0

990.0

990.0

990.0

11355

11355

990.0

990.0

990.0

990.0

11355

11355

990.0

990.0

990.0

990.0

11355

11355

990.0

990.0

990.0

990.0

11355

11355

990.0

990.0

990.0

990.0

11355

11355

990.0

990.0

990.0

990.0

11355

11355

990.0

990.0

990.0

990.0

11355

11355

990.0

990.0

990.0

990.0

11355

11355

990.0

990.0

990.0

990.0

11355

11355

990.0

990.0

990.0

990.0

11355

11355

990.

Monday Oct 17, 1910

Worstell, M.
Flezer
Billings, J. Chair.
Test. Flag
Carnett.
Cooper J. Ave.

East Boundary PLAT K

M.G.

C.C.

ΔR

ΔL

continued on Page # 11

2577.9

1946.14

1476.3

1372.6

1172.56

9789.1

7712.9

4784.4

3753.6

2770.9

1706.1

1100 S.E. 60'
Fire pipe Block
PLAT B

9789.1 - 3" Oak Post

50' from which 9
100 spikes in 50' Black Oak
beats North 220.0
and 100 spikes 60' from ground
to 25' Black (B.T.) beams
South 165.7

SWCOR.
C1-57 1255 R.A.W.

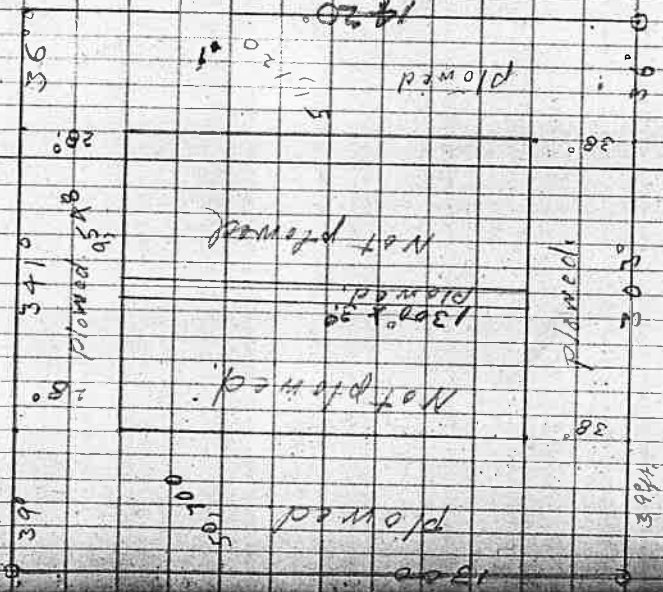
South

Plot A B 1 K 1 Lot 6 9

PLOWING MEASUREMENT

Nov. 5th 1910

(S. Toop
G. H. Key
Plot
Prater)



TRAVERSE OF CREEK THROUGH
 BLOCK 3 PLAT D
 DIST 46 A.F. C.C. MC
 STA

NW COR. PLAT E
 SW COR. PLAT F

Tie	1170.5	104°01'	N00°31'E	N02°21'E
Δ 5 Point in Devils Lake	227.8	25°12'	S75°28'E	S75°16'
Δ 4	294.8	23°53'	S50°16'E	S50°10'
Δ 3	373.7	20°11'	S26°23'E	S26°25'
Δ 2	380.6	46°24'	S6°12'E	S6°15'
Δ 1	957	15°17'	S58°36'E	S58°32'
93=10+00	1527		537°09'E	

Thursday
 Nov. 10, 1910

Worstell
 Fleeter
 Billings
 Test
 Cornett
 Gueppel

3 Hours

6112

2014

125122

2642 2+100

130122

120121

East Boundary Sta.	Dist	PLAT	ΔR.	C.C.	M.C.
		AL	ΔR.	C.C.	M.C.

Set Stone 4x10x14
 3.3 North of Inter
 section
 from which a 16' bears
 N 55° 30' W 4.7
 and 16" B. Oak
 bears 56° 25' E
 16.7

Nov. 10, 1910
 Worstell
 Fleser
 Billings 5 Hours
 Cooper
 Cothrell
 Test

39+68.05 = 35+97.05

47.3

148.3

92.5

175.5

204.3

3+90.7

3+21.5

25+77.9

South

continued from Page 10

Sta.	South	Bdry	PLAT	K
	Dist	A/L	ΔR	C.C.
				MG

continued from page #1

39+68.05

35+97.0

0.34

35+92.6

1099

34+85.1

1666

33+17.1

2620

30+55.1

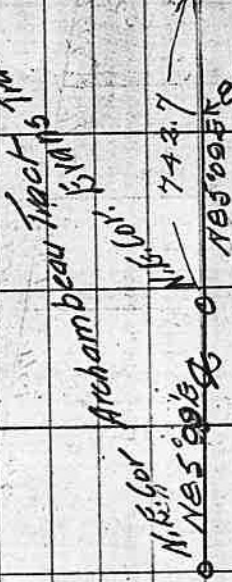
N89°35'E

Fain
Nov 10, 1916

Worstell
Fleser
Bittings
Test
Cooper
Corbett

2 Hours

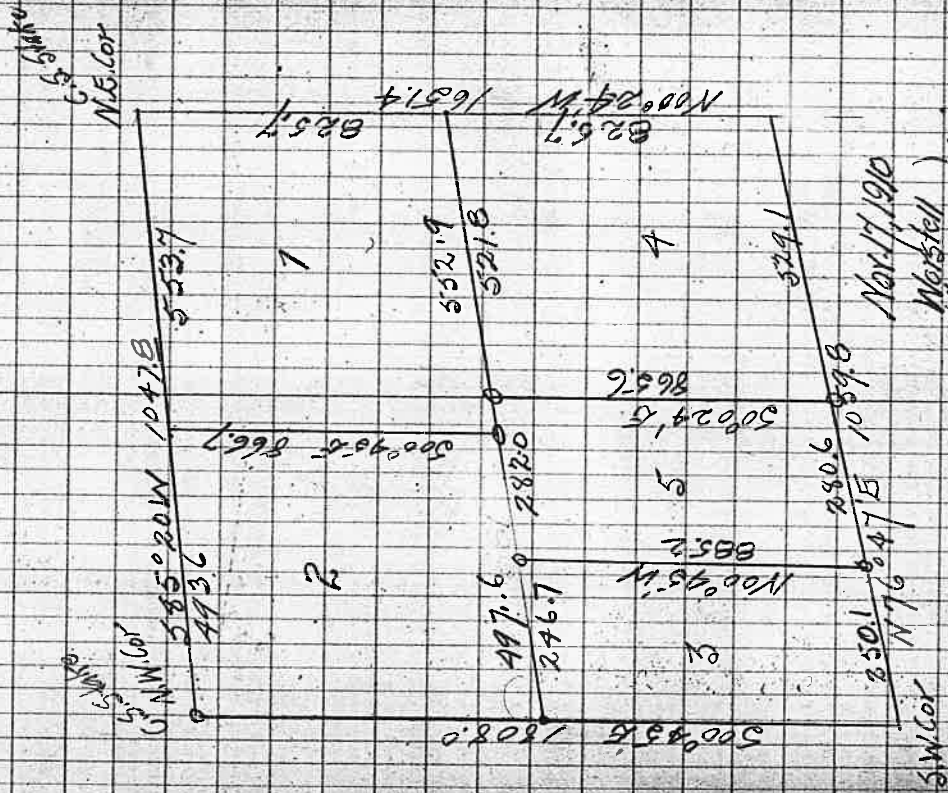
Flood Survey Through
Block 2 Plat 1 D



to 1/2 S
Block 7 Plat 1

Nov. 17 1910
Warstell
Fleser
Billings
Carnett
Cooper
Test } 2 hours

Subdivision of Archambeau Tract

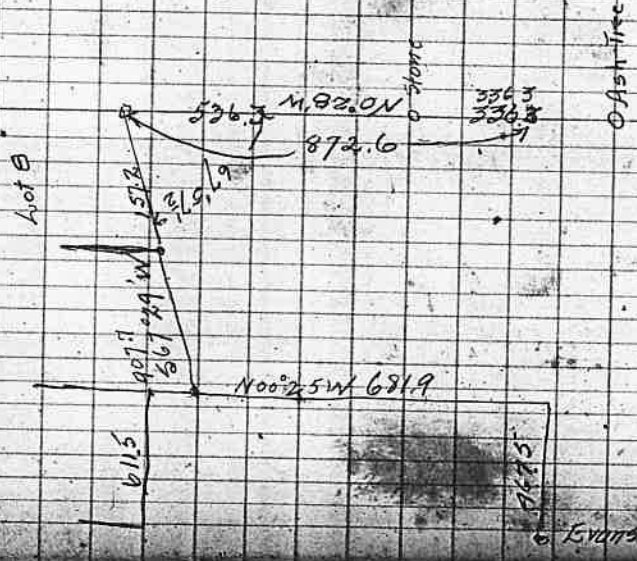


Preliminary Map in Plot D
Block 2



Nov. 17 1910
 Witness 1 Hour
 F. J. Fisher
 Billing's Subdivision
 Cooper
 Colman
 3 hours Nov. 18/1910
 Test

Preliminary Work in Plot D B142

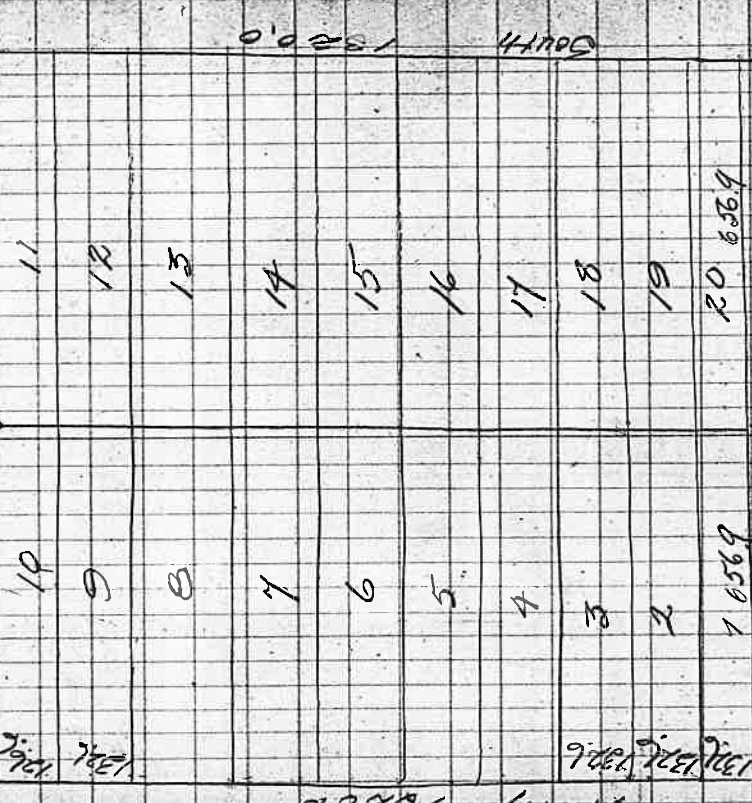


Evans N. H. 601

Subdivision of 1 S.E. 4 of S.E. 1/4
of Sec. 9, T.25.5, R.5, W.7

13" Oak from which 6" oak bears
574°35'W 28.2' and
12" Cedar bears 291°35'E 18.5'

6569 589°34'

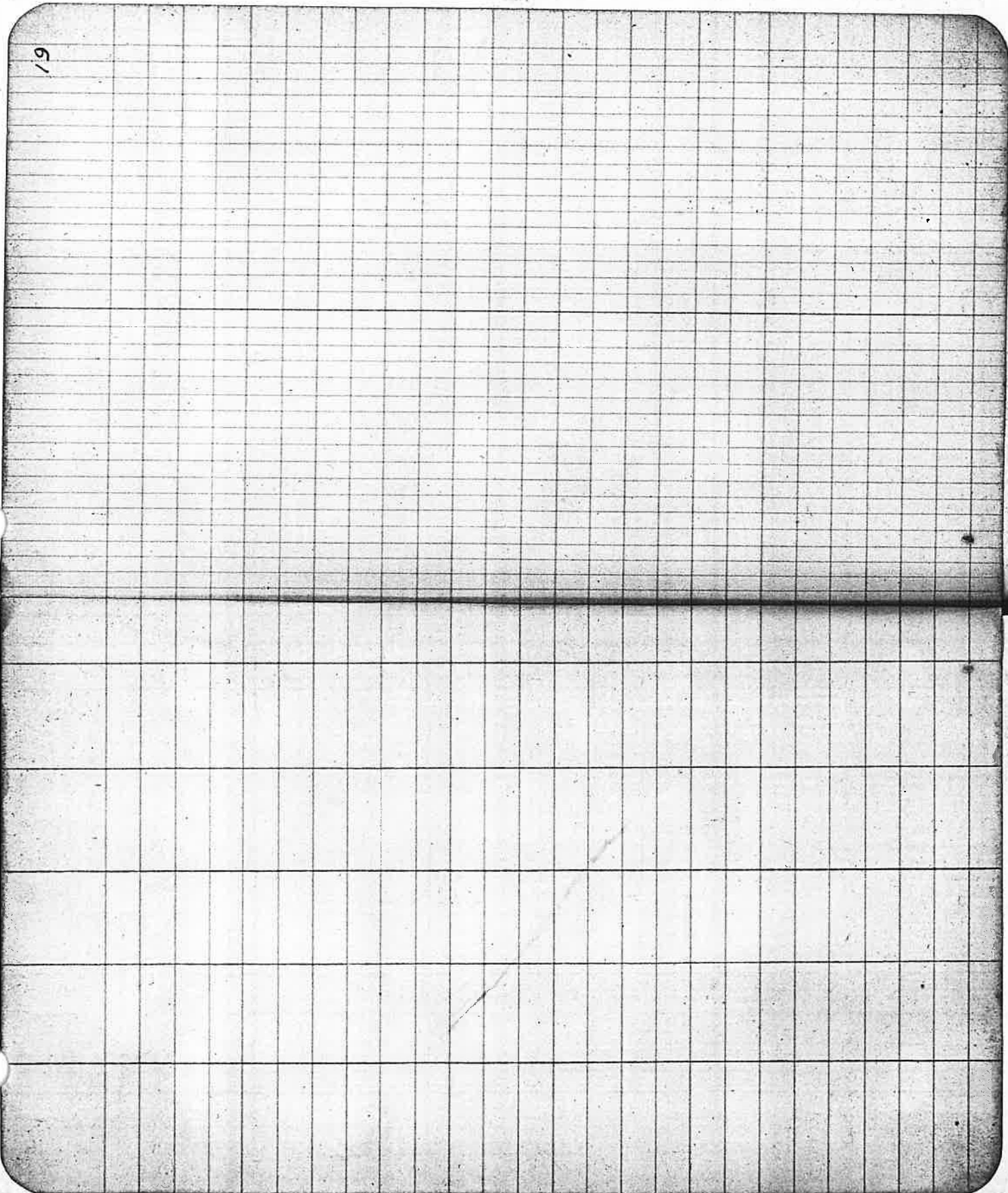


Nov. 26, 1910 6 Hours
Worstell Dec. 2, 1910
Flesher 10 Hours
Billings
Carnett Dec. 4, 1910
Cooper 10 Hours
Leet

1 6569
1 589°34'

SW Cor

61



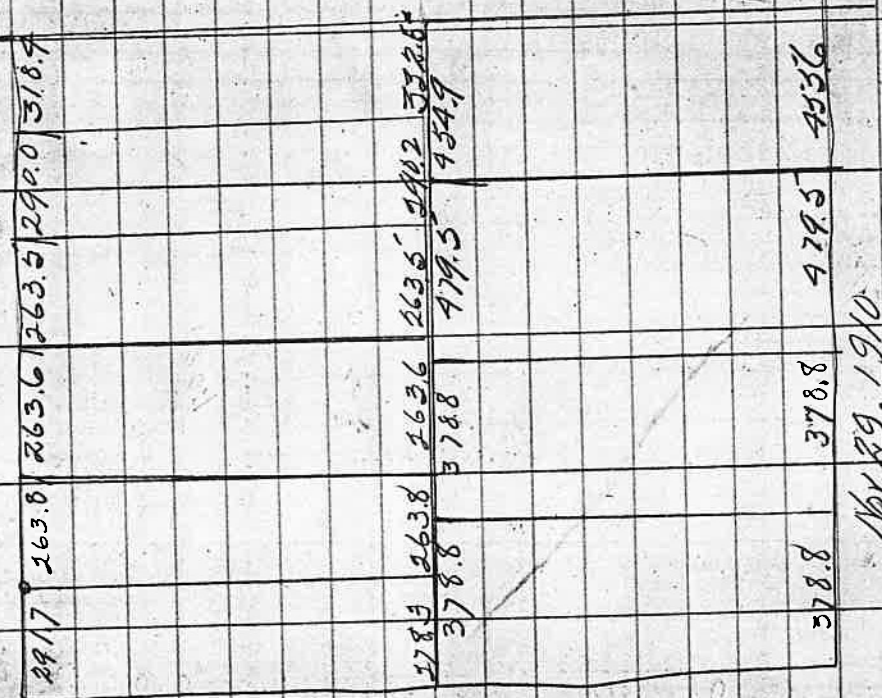
BLOCK 4 PATH



Nov 30 1910
 Warstell
 Fleser
 Billings
 Test
 Cooper
 Cornett

BLOCK 3 PATH

370.1



Nov 29, 1910
 Warstell
 Fleser
 Billings
 Test
 Cooper
 Cornett

6 hours
 4 hours
 Nov 25 1910

Sta.	B.S.	North Side H.I.	Ditch F.S.	Elev.	Notes
	5.10	305.10	251 300	300.59 304.8	Bed rock bottom of Ditch 6'0" West of Colvert Fir Grove School House
T.P. 6+00	6.60	307.19	-		
TP 10+00	3.32	303.49	202	300.19	
26+00	5.43	304.04 304.04	493	298.56	
38+50	3.20	300.54	670	297.34 297.34	0.2 too high
44+50	1.55	298.49	360	296.94	0.2 too high
61+00	5.41	300.70	320	295.29	0.2 too high
69+50	4.70	298.91	649	294.21	
79+00	1.85	295.14	568	293.29	
84+00	1.14	293.00	2.38	292.76	
95+00			1.2	292.70	
String			12.60	281.30	Stone N.E. Cor. Plat M. Beckley-Goff Land

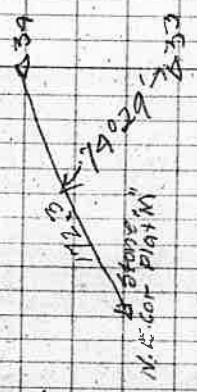
North Sta.	Ditch Dist.	Plot	Plot "M"	A.P.	C.C.	M.C.
Δ11	397.2			50.28'	N1°31'E	N0°32'E
Δ10	206.7			94.25'	N48°57'W	N49°35'W
Δ9	398.5	113.54'			536.38 W	535.35 W
Δ8	194.2			40.52'	N29°48'W	N30°50'W
Δ7	199.6				N70°40'W	N71°35'W
Δ6	296.5	85.6'		74.53'	N14°36'E	N15°35'E
Δ5	152.7				N60°17'W	N61°15'W
Δ4	148.9	45.07'			N15°10'W	N16°00'W
Δ3	398.3			57.99'	N72°29'W	N73°25'W
Δ2	329.0			66.34'	520.57 W	520.05 W
Δ1	190.6	1.41'			522.38 W	521.40 W
0T00	105.4	105.90'			N51°42'W	N52°40'W
Δ41 on Plate	180.8				N88°12'W	N89°10'W

Sta.	Dist.	AH	AR	C.C.	M.C.
A24	271.5		86°23'	N85°50'W	N86°55'W
A23	106.8	68°29'		N17°21'W	N18°20'W
A22	149.9		47°28'	N14°44'W	N65°55'W
A21	134.5	91°58'		N27°09'E	N26°10'E
A20	162.4		80°21'	N53°12'W	N54°10'W
A19	156.0	131°55'		N78°43'E	N77°38'E
A18	513.1		19°34'	N59°09'E	N58°15'E
A17	150.0		93°46'	N34°37'W	N35°30'W
A16	143.7	64°07'		N29°30'E	N28°30'E
A15	298.3		58°19'	N28°49'W	N29°40'W
A14	337.1		111°52'	S39°39'W	S38°40'W
A13	249.4	75°32'		N64°49'W	N65°5'W
A12		66°26'			

North Ditch to Plat III

North Ditch to Plat M

Sta.	Dist.	ΔL	AR.	C.C.	M.C.
A36	101.3		30°16'	N69°21'W	N70°30'W
A35	383.8	106.09		S80°23'W	S79°15'W
A34	89.7		69°11'	N6°30'E	N5°25'E
A33	99.9		48°59'	N62°9'W	N63°9'W
A32	149.0	67°17'		S68°20'W	S67°10'W
A31	342.6		23°33'	N49°23'W	N45°30'W
A30	298.4		109°00'	N67°56'W	N68°55'W
A29	298.4	139°15'		S3°04'W	S2°05'W
A28	225.3		54°56'	N37°41'W	N38°35'W
A27	135.2		50°03'	S87°23'W	S86°15'W
A26	217.3	140°56'		S57°20'W	S56°20'W
A25	392.9	2015'		N1°42'W	N2°40'W
	1372.			N00°33'E	N0°15'W



Sta.	Dist.	AL	ΔF.	C.C.	M.C.
A44	67.4				
A43	147.6		55°28'	N18°06'E N170DIE	
A42	241.0		74°51'	N37°22'W198°25W	
A41	101.8		39°37'	S67°47'W566°35W	
A40	188.3		1°12'	S28°10'W. 527°00'W	
A39	181.0	57°27'		S26°58'W515°50W	
A38	298.1		13°24'	S87°25'W683°10'	
A37		39°42'		S70°57'W564°50'	

A44 + 12039 West of
NE. Cor. Plat M.

A40 is 895.9 West
of NE. Cor. Plat M.

Sta. Dist AS ΔR. C.C. M.C.

8+82.9

7+53.8

1+30.0

4+25.7

0+00
54+57.6

18+36.7

6+36.7

1717.4

Anchor Post SE Cor
of Lot 181K 2
Plot A 0+00

N.E. Cor. G140

500°15'E 500'40"E

90°00

589°45'W 589'20"W

90°00

500°15'E

500'±E

00'01'

0-54+57.6

0+00 0-1/6 Anchor Post

0-1/6 Stone N.E. Cor. G140
T 25.5, R 5.4

Levels through PLAYMA
North Side Ditch

Sta.	B.S.	I.I.	F.S.	Elev
	2.6	2991		2915
	726	2975.6	3.80	290.3
			7.76	289.80
			22.00	275.26

(1138)

Sta # 34 on Ditch Traverse See page # 25, Book # 15

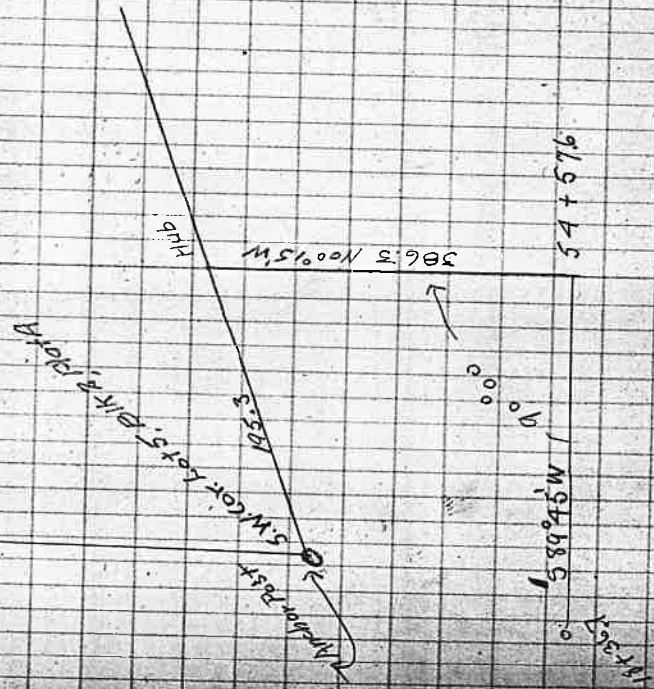
Turns across Porteous Place

Sta.	B.S.	I.I.	F.S.	Elev
	300.4			301.00
	161	302.3	3.41	300.69
	529	2985.3	9.06	293.24
			0.29	298.24

PIAT N
0+00

By Contour
14750

5.378 to 5.38
0.00 6140



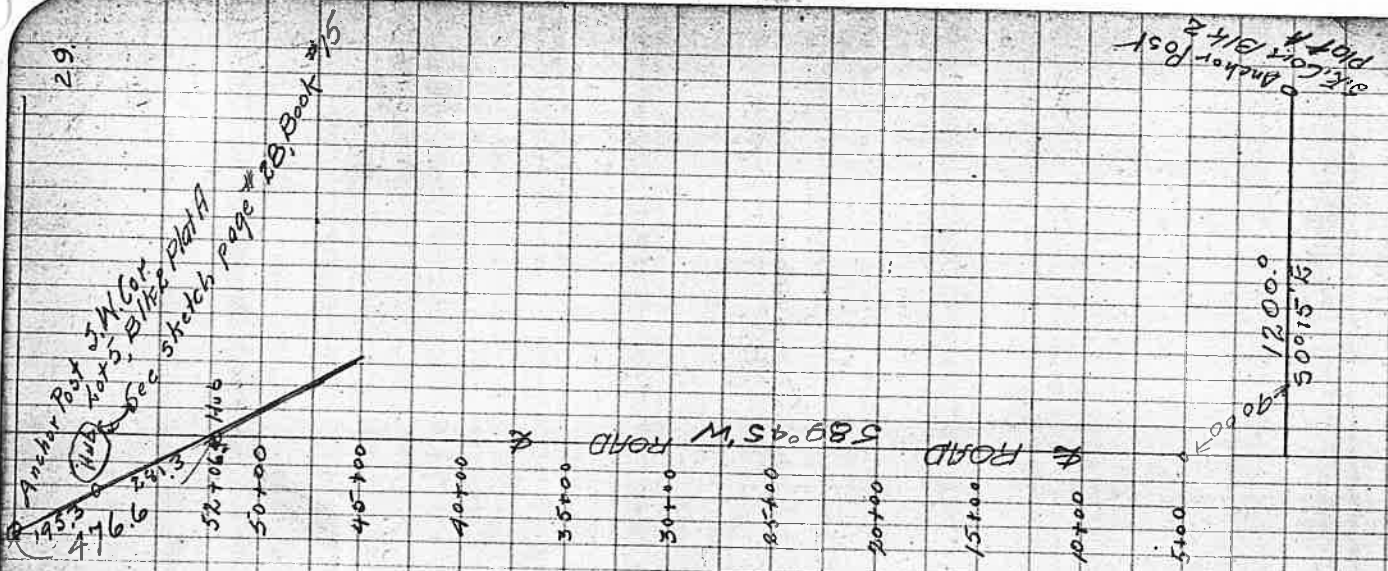
54+576

Levels for Ditch Through Plat. "N"

Sta.	B.S.	H.I.	F.S.	51er
0+00	501	503.25	519	298.06
T.P. 1+50	424	302.30	439	297.91
3+30	252	300.43	270	297.73
4+50	197	299.70	200	294.70
6+00	576	303.96	625	297.21
10+50	414	301.35	477	296.58
16+50	621	292.79	690	295.89
24+00	055	296.44	073	295.71
25+50			1293	283.51
80° DIP to Disc @ 10150 Drop 185		285.36	257	281.79
32+50			1292	272.44
T.P. 34+00	091	275.55	1301	268.34
T.P. 36+00	024	268.58	1224	248.34
T.P. 38+00	150	249.84		

All changed

(Drop 33.45)



Levels for Ditch Through Plain

Sta.	B.S.	H.I.	F.S.	E lev
38+00				247.79
T.P.	1.60	238.44	13.00	236.84
47+00		411	2.90	235.94
T.P.	6.90	232.34	18.00	225.44
57+00			7.60	224.74

(Drop 10.95)

(Drop 10.50)

Drop 5.3

27+00	0.27	290.53		290.26
37+50	2.85	292.67	0.71	289.82

Drop 2.15

0.55

0.75

1.172

Drop 10.95

4.20 Drop 3

7.24

1.50

54+00

Sta.	Traverse of Ditch continued on page # 43	Through # 43	Part "N"
Dist. AL	19° 45'		
Δ11	250.4	19° 45'	S 72° 8' W 541.50'
Δ10	151.5	21° 94'	S 63° 32' W 555.10' W
Δ9	198.8	31° 45'	N 84° 43' W N 45° 10' W
Δ8	201.9	22° 50'	N 62° 53' W N 61° 17' W
Δ7	201.6	66° 39'	S 51° 28' W 651° 03' W
Δ6	244.7	41° 46'	N 86° 46' W N 87° 10' W
Δ5	199.6	73° 26'	N 13° 20' W N 35° 55'
Δ4	143.4	14° 24'	N 27° 44' W N 25° 26' W
Δ3	119.1	81° 59'	S 70° 37' W S 70° 55' W
Δ2	159.8	12° 48'	S 57° 49' W S 57° 35' W
Δ1	148.2	5° 53'	S 63° 42' W
0+00		63° 57'	S 00° 15' E

Tuesday, Oct 18, 1910

Worstell
 Flaxey
 Billings
 Test
 Cooper
 Cornett J. Ave.

Fence Corner + 26 + 874 - SW Boundary
 Cor. C. 37 T-25-S, R-5-W

0+00
 S.E. Cor. C. 37
 Hub in Flag 20

Sta	Winniford Place	Dist	A L	A R	C.C.	M.C.
26 + 874						
23 + 16.7			1°40'		S 89°02' W	81°20'
19 + 48.8			00°01'		N 89°27' W	189°58'
16 + 94.5			00°16'		N 89°16' W	N 89°20' W
13 + 20.7				1°00'	N 89°00' W	N 89°20' W
11 + 20.7				00°02'	West on 589°30'	
10 + 78.2		205.0			S 89°57' W	589°45' W
7 + 76.9		52.5			N 89°14' W	N 89°20' W
4 + 45.2		301.3		00°49'	S 89°49' W	
0 + 00				00°10'	S 89°49' W	589°32'
Hub in Hog Pen					S 89°59' W	

586596

Tuesday, Oct. 16, 1910

Worstell. }
Hoser. }
Burrings }
Tess. }
Cornell. }
Cooper }
Axle

5+525 About Centre of Sec. 30

170 South and 50 East
to Post in fence cor.

Winniford Place.

Sta.	Dist	Ah	AR.	C.C.	M.G.
27+39.2	9°32'			54°28'E	57°40'E
254.1	14°23'			56°55'W	58°42'W
21+64.3		7°42'		50°47'E	50°45'E
17+84.6		0024'		" "	" "
16+82.2	0000'	0000'		51°11'E	50°25'E
15+23.4		0054'		52°08'E	51°55'E
13+11.0	6°38'			54°30'W	54°15'W
8+67.0	00°58'			55°08'W	55°45'W
6+40.0		5°18'		" "	" "
5+52.5				" "	" "
2+38.4				50°19'E	51°55'E
0+00				N89°31'W	101°45'
21+75.0	90°39'			" "	" "
19+48.8	00°44'			N89°17'W	" "

21+150

Wednesday Oct 19 1910
37

Worstell
Billings
Flesch
Teet
Cooper
Carnett

Had been reestablished

26746.0
30 | 29
51 | 32
R-255
R-5W

In field across RR
Track N.E. from
Winniford house.

Winniford	Dist	Place	AR	CC	M.C
26946.0	1236.7			58796E	
14+093			324'	"	
11+129			"	"	
97+63			"	"	
8+10.8			"	"	
6+08.6			"	"	
2+830				"	
1766.5				N68°50E	N68°10'
	1466.0			N87°59E	N87°25E
			00°51'		
1 Cor. between 450231 21+100					
	106.8	17°00		575°01E	575°10E
30+333					
	157.6	56°36'		524°20E	523°5'
28+76.0		7°25'			
	136.4			577°00E	577°25'

OCT 20, 1910
Noon

Wurstell A
Fisher-
Billings have
Test
Garnett
Cooper.

Had been reestablished

S.W. Cor
CI # 38

26+980 4 reestablished by 25
bet. 51032

71246 5.0 South to Fence

Winnifard Place
Dist AL AR C.C. M.G.

Sta

S.W. Cor
CI # 38

5111

0+00
26+980

6272

20+208

510

71246

0+00

30/28
31/32

581° SW 51010W

53° 45' SW 55° 45' E

51 25 W

51° 25' W 51° 30'

587° 46' E

85° 36'

5° 10'

89° 11'

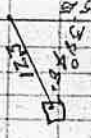
Winniford Place
 Dist AL AR. C.C. M.C.

Oct 29, 1910

Waisell
 Pleser
 Billings
 Cornett
 Cooper
 Tott
 100 pms

Some old C.S. Cor
 15' west of our line

21+02.2



Stone in Fence
 Corner

85.8

3+55.2

30+7.0

267.44

135.7

273.87

2+56.0

24+82.7

102.5

23180.2

278.0

21+02.2

19+05.4

16+38.6

16.43

14+74.3

14+14.3

16+45.4

1290.2

3+55.2

4+40.0

4+24.6

N0036W N0870W

4°30'

N506W N350W

4°06'

N1000W N0050W

89°35'

N8835E N9740

3°00'

S6822E S6916

89°47'

S1025W

Oct 21, 1906
Worstell.
Alaska
Filings.
Copper
Copper
Test

Hours
2 hours in
office

374036
N.E. Cor. Ct. SE
Reestablished from BT
found south of Old Corner
State

Winniford Place.
Dist. Ak A.R. C.C. M.C.

Sta.

1308.4

5° 48'

581° 47' W

7+44.4

157.7

N 84° 30' W

5+68.6

175.8

N 89° 55' W 589° 45' W

3+50.9

54.5

264° 23' W 589° 00' W

1+62.1

1005'

N 89° 32' W 188° 20' W

57+33.6
6138

92° 43'

N 3° 11' E N 3° 00' E

35+89.1

144.5

N 0° 36' W

33+77.7

3097'

" "

32+44.2

3097'

N 0° 36' W

Tie for place of Beginning
in Description being J.L.W. Co's
J.W. Cor. of Partion # 38
T. 25 S, R. 5 W.

Oct 21, 1910

Cor.

1911
189°30'W

140.33

142.9
5102.5' W

30/59
A Sec. Cor 31/52

Winniford Place

Sta. Dist. A.R. C.C.

line from $\frac{1}{4}$ Cor Sec 31 & 32 to

Sec Cor $\frac{516}{32 \times 31}$ on Twp line

T. 25 R. 5 W. S. 826.5

True line 500' 38 E.

26+327

60.5

S41°45'W 549.5'

25+727

5°30'

23+174

18+48.2

7+35.1

$\frac{1}{4}$ Cor 31 & 32

500 45 E 501.0

3°00'

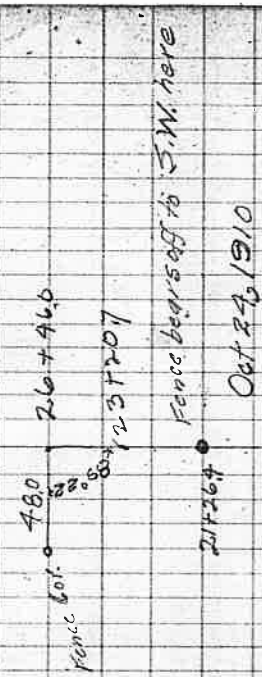
S 37°5 E

Oct 22, 1910

Wardell
Fleser
Billings
Test
Cooper
Corner

5 Hours

40.
Worstell
Fleeser
Billings
Test
Cornett
Cooper



On West Bay Ct #48
570900 set hub in County Road
Worstell Oct 23, 1910
Fleeser
Billings
Test
Cornett
Cooper

Winniford Place
Dist. A.L.
DR
South Bay Random
SS
M.C.

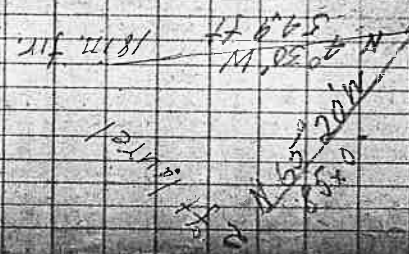
Sta.	86+460			
	23+20.7			
	217264			
	20+258			
	16+80.2			
	13+509	329.3		
	12+238			
	9+919			
	9+386			
	8+744			
	57670			
	57090			
	13+16.3	91.00	NS996'W	
	6+05			
	2 Cor 31/3		5009 1/2	

True S.W. Cor. of
Sta Dist 14 AF CC MC

Archon Deau Point #2

0+00
0+09 8" oak post
9.0
0+00

East



Nov. 8th 1910.

Rest N
Gilkey P.M.
Price # 200
Bruce
Prater Team

New cor SW cor. of Archambeau Land
Notes old SW cor Archambeau Land

Sta.	Ditch through	Plot N	Dist.	AL	AP.	C.C.	M.C.
	Continued on page #60						
A20	97.0	48'19"				N62°52'W	N63°20'W
(A22)	72.9			13°52'		N148°30'W	N15°00'W
A21	105.4			57°54'		N128°30'W	N83°30'W
A20	101.5	10°45'				N86°19'W	N88°30'W
A19	198.5	66°54'				N75°34'W	N75°58'W
(A18)	202.5			109°10'		N8°40'W	N9°00'W
A17	114.3	46°12'				S62°10'W	S61°40'W
A16	198.2			39°20'		N73°38'W	N72°05'N
A15	253.5	15°52'				S67°02'W	S68°35'W
(A14)	191.2	15°35'				S89°54'W	S84°30'W
A13	261.1	39°31'				N79°30'W	N79°35'W
A12	107.1					N40°00'W	N40°30'W
A12	141.2			119°54'		S62°03'W	S61°30'W

Sta	Dist	North of Plat	Plat No.
5761.6	AL	AR	CC MC
4416.9			
5422.6			
1929.	129.7		
Oak Post 154.00	192.9	76° 40"	N76° 40' E
1278.1	218.9		N 84° W
11720.5	160.6		N 84° 45' W
9457.1	163.4		N 84° W
7401.9	255.2		N 65° W
4436.1	265.8		N 72° W
24160	230.1		N 65° W
0400	216.0		N 65° W
Back on County road		79° 05'	S 71° 05' W

5761.6 } Set 4" Oak Post
from which 20" oak
beams 50% by R. L. A
and 12" oak beams
588° 00' E 137

Wed. Nov 7, 1910
Worstell
Fleser
Billings
Carnett
Cooper } 10 Hours
4416.9 }
Set 5" oak Post from
which 37" oak beams
N 59° 45' E 75.2
and 20" oak beams
588° 50' E 42.3

Tues. Nov 6th / 10
TEST A } 10 hours
Fleecer }
Billings }
Bruce }
Carnett }
Cooper }
15" oak Post from
which 10" oak beams
N 82° 35' W 17.8
and 11" oak beams
N 15° 15' E 37.0

75

Sta - Dist AL AR CC MC

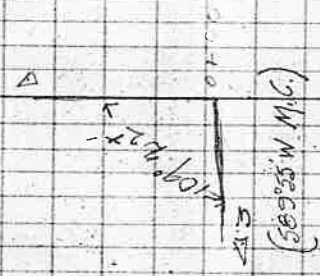
104.8

111.0

111.1

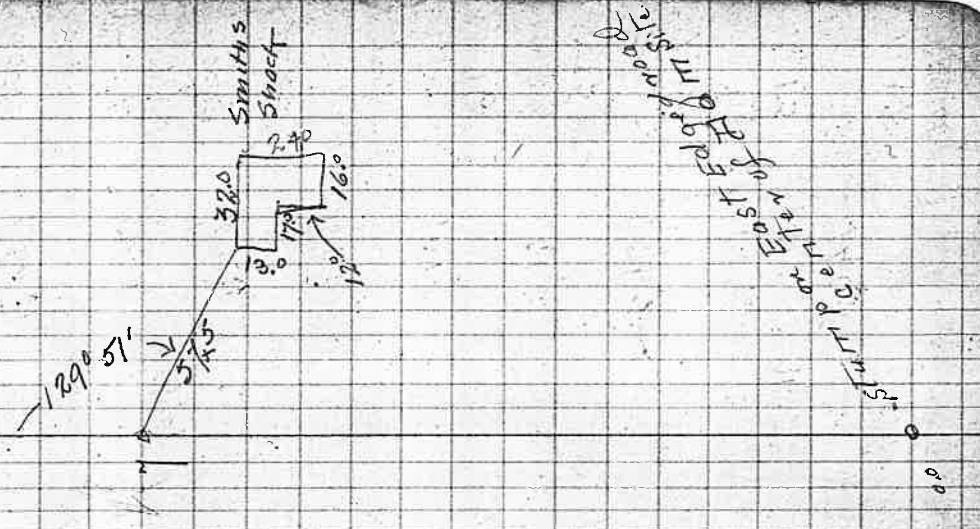
111.0

Sta	Henderson Place	Dist.	Δ L	AR	C.C	MC
N.W. Cor Plot E					589°52'W	
N.W. Cor Plot A		166.4	10°39'		578°57'W	
Mopping bar SE		1068.3	63°40'	122°04'	343°07'N	149.002
0+00					120°33'E	N 119°06'
A 1						
0+00					N 88°49'W	
Δ 3		1188.3			57°12'W	36.10'W
A 2		640.4	83°06'		N 89°42'W	588.00
A 1		1352.4	110°15'		N 20°33'E	N 119°30'
0+00		696.7				

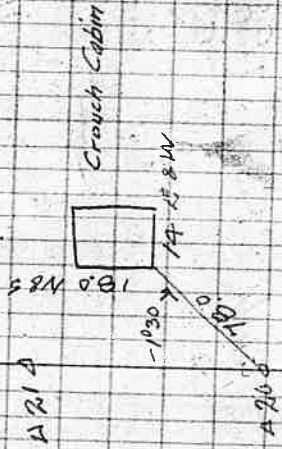


North 23.1 to Thell's Hub
 417.68.8 = South Anchor
 Rest of Gate
 AR
 569°20' at 11+00.31
 Anchor Post N. 80° E. 1.5
 Hicks N. 5.6 or

Sta	Primary Traverse	Smiths Canyon	for Traverse
A11	147.2	42°35'	S13°51'W 513.30' W
A10	258.5	38°29'	S28°44'E 529.05'
A9	101.9	34°34'	S9°45'W 59.25'
A8	314.9	12°30'	S24°49'E 525.10'E
A7	311.6	34°12'	S37°19'E 537.50'
A6	462.0	25°17'	S3°07'E 53.25'
A5	345.6	33°50'	S28°24'E 528.50'E
A4	296.6	9°27'	S5°26'W 54.50' W
A3	111.0	34°36'	S4°01'E 54.40'E
A2	74.0	34°47'	S30°35'W 538.05'
A1	222.9	5°12'	S4°12'E 54.35'
DT00	149.4		S1°00'W 50.35'



Sta.	Reservoir Site Canyon Traverse	Smiths Canyon
AR3	Dist A/B ΔF 1084'	C.C. M.C. N80°24'E N80°20'E
AR2	532'	N70°25'E N70°20'E
A1417	91.3	N75°37'E N75°10'E
AR1	2504	578°59'5 579°52
40304	2847	70°02'
AR0	1059	N60°59'E N59°10'
37657	4524	573°37'E 574°05
A19	4034'	533°03'E 533°30'
36590	603	539°58'E 540°10'
A18	1010	570°41'E 571°00'
A17	1603	588°01'E 588°20'
A16	76.5	581°40'E 582°00'
A15	187.5	534°47'E 535°05'
A14	6021'	
A13	46°53'	
	48°38'	



178°26.5

Sta.	Reservoir Site Not Used	Dist	Δ F.	C.G.	M.C.
734.					
A 33	1948'				N48°00E
A 32	15°30'				N67°35E
A 31		3°47'			N82°40E
A 30		8°06'			N79°30E
A 29		9°22'			N71°10E
A 28	19°08'				N30°05E
A 27	15°16'				N49°15E
A 26		1°06'			N62°30E
A 25	44°41'				N63°34E N63°35E
A 24		2°05'			57°46E 51°35E

5
6
0°

W 15 1/2 11 }
 F 500 }
 R 11 1/2 }
 C 100 }
 E 1 1/2 }
 15 Haws
 22 1/2 1 1/2 1 1/2

Creek and Ditch below Smith's Canyon

Sta.	Dist	Site	DL	DR	C.C.	M.C.
Δ4	285.2		1°59'		N56°13'W	N56°35'W
Δ11	484.6			4°59'	N54°14'W	N54°35'W
Δ10	416.0		21°35'		N62°13'W	N62°40'W
Δ9	276.8			27°57'	N40°16'W	N40°40'W
Δ8	282.2		26°18'		N68°15'W	N68°40'W
Δ7	320.7			2°31'	N41°57'W	N42°27'W
Δ6	298.9			3°42'	N44°28'W	N44°55'W
Δ5	242.3		31°56'		N48°10'W	N48°35'W
Δ4	102.3				N16°14'W	N16°40'W
Δ3	99.1			26°57'	N43°11'W	N43°35'W
Δ2	170.7		59°34'	37°58'	N81°09'W	N81°35'W
Δ1	147.8		22°35'		N21°35'N	N22°00'W

3 Δ100/5/

6 Δ12/8/

7+260

1416047

Δ6450

6 Δ20/9/

55/172

171655

418511

493/161

3-20/121

2-25/111

1400

Δ1-25/9/

22°35'

00-50-00

5100
Canyon
Reservoir

Creek & Ditch Traverse

Smith's Canyon

Sta Dist AL AT. C.C. MG.

High Line Ditch Traverse

A 35
30m

Δ17

631.0
631.0

Δ16 = 11143.3

N66°31'W N60°10'W

6°53'

Δ16 = 11143.3

322.6

N53°38'W N54°05'W

0°25'

Δ15

73.3

N53°13'W N53°30'

22°57'

Δ14

201.6

N76°10'W N76°35'W

14°25'

Δ13

181.3

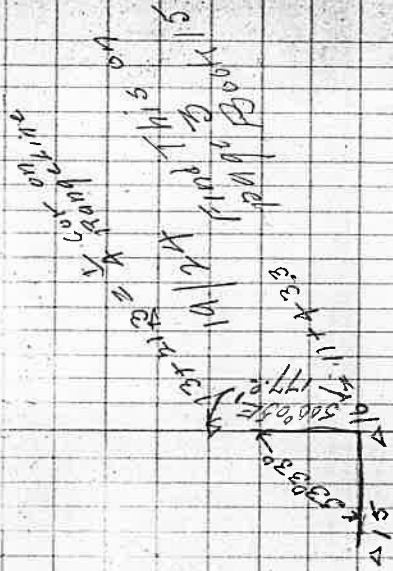
N56°45'W N57°01'W

0°32'

Δ12

51.

This is $\frac{1}{2}$ Cor. 15/1054
side shot not on traverse



Dec 14, 1910

Worstell
Gieser
Conroy
Clyde
Hess
Masteller

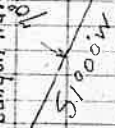
2400

57°00'W

1450

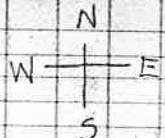
1400

Al Canyon Traversed



1350

at stump west of
creek on East
Edge of road.



1300

N71°00'E

1250

1200

1150

1100

1050

Dam line

Dec 14/1910
 Dec 15, 1910
 Worstell
 Hest
 Cannon
 Smith
 P. J. G.
 W. Fisher } Shows
 } Ketchikan

Sta	Dist	Δk	ΔF	C.C.	MC
A11	84x1		23°0'	S 89°41'E	S 79°20'E
A10	12x6	10°39'		S 31°51'E	S 32°30'E
A9	315x2	1°50'		S 21°12'E	S 21°38'E
A8	177x7	4°00'		S 19°23'E	S 19°55'E
A7	169x4	11°23'		S 15°22'E	S 15°30'E
A6	277x1	7°30'		S 3°59'E	S 4°30'E
A5	153x8	21°17'		S 3°31'W	S 3°00'W
A4	205x6		39°24'	S 24°48'W	S 24°10'W
A3	97x1	15°34'		S 14°36'E	S 15°05'E
A2	163x5	3°51'		S 0°58'W	S 0°30'W
A1	225x1	6°11'		S 4°49'W	S 4°10'W
0+00 = 0+00 Canyon	102x3	11°00'		S 77°00'W	S 70°35'W
0+00 = 0+00 Canyon				S 1°00'W	

01 Elev 250'

1917

50' Contour on West Side of Canyon

Sta.	Dist.	ΔL	ΔR	S.C.	M.C.
Δ 23	71.6		18°0'	N57°54'E	N57°30'
Δ 22	137.8		2°57'	N39°54'E	N39°50'
Δ 21	172.6	14250'		N31°57'E	N36°27'
Δ 20	194.4	9°16'		500°13'E	5°55'
Δ 19	162.3		13°52'	59°03'W	58°27'
Δ 18	96.1		18°47'	59°49'E	55°20'
Δ 17	103.5	4°30'		525°56'E	539°20'
Δ 16	106.2		31°20'	519°06'K	519°40'E
Δ 15	58.7	27°45'		550°28'E	551°00'E
Δ 14	238.0		2°07'	522°41'E	523°20'E
Δ 13	232.4		3°33'	524°48'E	525°25'
Δ 12	129.9	19°40'		528°21'E	520°55'

Δ 18 At point above Red Fork
Right Fork

From
Westerl
Esker
Canyon
Copper
Mts. 1910
M.G. Graph
Dec 17, 1910
5 hours
Dec 16, 1910
10 hours

50 Contour on West Side of Canyon

Sta.	Dist.	Δ L.	Δ H.	C.C.	M.C.
4740.8					
A30	162.6		3°59'	288°59'E	569°50'E
(A29)	182.0	1°05'		N87°07'E	N86°30'E
A28	151.2	22°49'		N88°07'E	N87°30'E
A27	253.8			569°09'E	569°50'E
A26	73.6		16°39'	585°48'E	586°28'E
A25	76.6		27°48'	N66°24'E	N66°00'E
A24			8°30'		

Δ30 = Δ21 on Centre Traverse run 100' ΔB

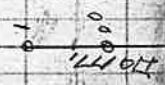
Δ29 Not on Contour on east Trees Should be tangent from Δ28
TUA 20

Δ on Centre Traverse
19
20
21

Enter West Fort Again

5 mi. N. W. of
 Traverse on East Side of Canyon

T Sta.	Dist.	AL	ATP	C.C.	M.C.
A12	717	7°35'		S16°04'E 516.55'	
A11		22°44'			
A10	86.6		30°05'	S6°40'W 56.55'	
A9	382.0	2°57'		S73°25'E 323.50'	
A8	153.5		9°05'	S20°28'E 520.85'	
A7	177.8	29°42'		S29°33'E 530.05'	
A6	69.9	21°25'		S00°09'W 500.20'	
A5	260.2	29°23'		S21°34'W 521.50'	
A4	299.9		55°32'	S50°57'W 550.30' W	
A3	216.0	6°04'		S4°35'E 22.25'	
Cut Across a Small Draw					
A2	160.5		11°31'	S1°24'W 51.00'	
A1	172.3		98°58'	S10°04'E 510.20'	
D100: 0100 on centre of Canyon					
				N1°00'E 170.20'	



Outside Traverses
close within 5"

(3.7) ^{too high}

Traverse on East Side	Smith's of Canyon	C.C.	M.C.
279 Δ 25 = Δ 20 on Cordia Traverse 180x7	Δ R	559°31E	560°00E
Δ 24	6°21'	565°32E	566°25E
Δ 23	7°38'	573°30E	574°00E
Δ 22	27°16'	546°14E	546°32E
Δ 21	9°45'	536°29E	536°55E
Δ 20	4°03'	538°26E	538°50E
Δ 19	36°53'	54°27W	54°00W
Δ 18	64x1	517°25E	514°50E
Δ 17	68x3	514°49E	513°52E
Δ 16	130x3	531°51E	532°20E
Δ 15	84x5 16°18'	515°33E	516°00E
Δ 14	90x3 6°48'	584°5'E	591°0E
Δ 13	81x8 200x9	523°39E	524°10E

Smith's of Canyon

Traverse on East Side

Dist on Cordia Traverse
180x7

Δ R

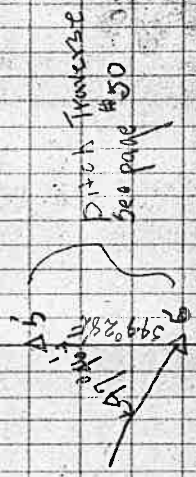
C.C.

M.C.

Smiths Camps
 Traverse for J.W.D. Cor.
 Sta. Dist. AL A.F. C.C. M.C.

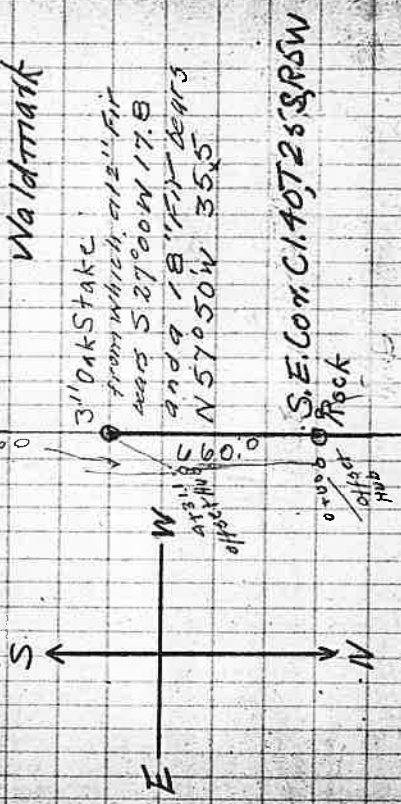
Total Time
 on Reservoir and
 Ties
 Transit Party
 Nine Days
 Six Men

J.W.D. Cor.
 A1 706
 333 M
 0400 - 262 Ditch Traverse
 518
 586°56'E 509 M R
 N87°46'R N87°21'E
 544°38'E
 AS



East Bdy of C1. 40 T25S, R5W 59.
Feb. 18, 1911

Fleser
Brauc
Stewart
Waldmark



S. E. Cor. C1. 40 T25S, R5W

Rock
N. E. Cor. C1. 40
T25S, R5W

N. E. Cor.
L15. B1
PLATA

Sto.	Dist.	Plot N
		AR.
53+92.5		
3" Oak St	89°30'	589.95W
44+31.1		500°5W
43+00.9	00°29'	500.14K
52+23.5 0+00 C1.40	300.9	
0+00 =	N. E. Cor. C1. 40 T25S, R5W	

South Bdy

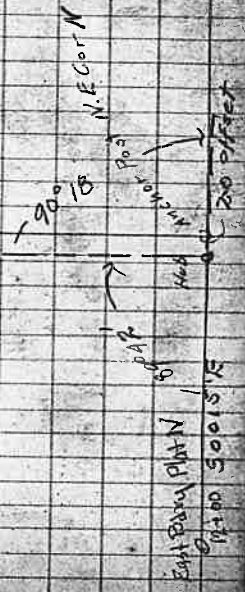
Ditch Traverse through Plot A

Sta.	Dist.	AL	AF.	C.C.	M.C.
A36					
A35					
A34	230.3			589°36'W	589°00'W
A33	310.9		00°23'	589°15'W	588°50'W
A32	121.2		11°08'	578°07'W	577°30'W
A31	338.7	16°08'		N85°45'W	N86°05'W
A30	364.5	13°36'		N72°09'W	N72°20'W
A29	95.9	66°50'		N51°19'W	N5°30'W
A28	178.6		78°50'	N84°09'W	N87°30'W
A27	196.4		70°25'	N86°34'W	N86°55'W
A26	351.3		17°00'	576°26'W	576°05'W
A25	177.3		2°04'	574°22'W	574°10'W
A24		42°46'		N62°51'W	

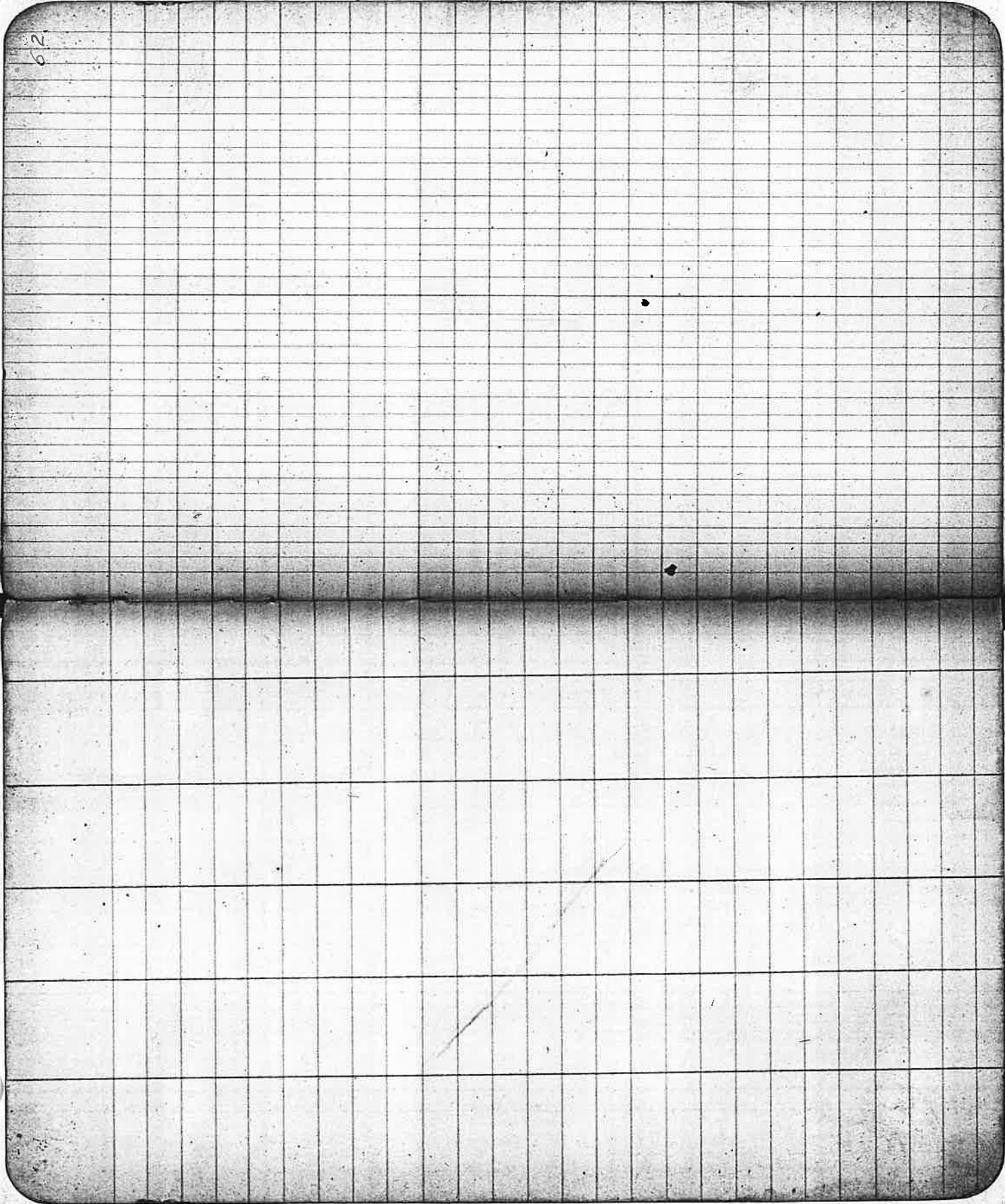
Front angle to South
90°04'
to North
260°04'

A34 is N00°15'W
471.6 ft. with S.M. Cor.
C140.

Sta.	Dist	AL	AF	C.C.	M.C.
Int West Entry	392.1				
S.E. Cor 5	584.3		750	561°59'W	561°25'W
S.E. Cor 6	512.8		603.2	554°00'W	553°30'
S.E. Cor 7	298.9				
A in lot 8 3455	81.0			547°37'W	547°00'
S.E. Cor 5 lot 9 3414.5		1052		558°29'W	557°55'
A in lot 9	3807	2345			
S.E. lot 9 8736.8	654.5				
S.E. Cor 10 1815				582°14'W	581°50'W
2411.3		7028		589°42'W	N 69°5'
S.E. Cor 11 19742.9	468.4		0095	589°27'W	589°50'W
0700					



62



63

The image shows two pages of graph paper from a notebook. The top page is numbered '63' in the upper left corner. Both pages feature a grid of small squares. A vertical margin line is present on the left side of each page. The bottom page has a faint diagonal line drawn across it. The notebook's binding is visible on the left edge, showing two punch holes.

Sta.	Timber Road Plat N"	Dist.	Δh	ΔR.	C.C.	M.G.
Δ10		239.9	36°10'		S41°48'W	S41°20'W
Δ9		127.5	20°06'		S77°58'W	N77°25'W
Δ8		212.4	16°05'		N81°56'W	N82°28'W
Δ7		163.3		46°28'	N65°51'W	N66°25'W
Δ6		207.3	43°05'		S67°41'W	S67°10'W
Δ5		217.4	60°33'		N69°14'W	N69°40'
•Δ4		155.4		65°54'	N8°41'N	N9°10'W
Δ3		109.3		34°54'	N74°35'W	N75°10'W
Δ2		124.1		14°54'	S70°31'W	S70°00'W
Δ1		158.6	18°47'		S55°37'W	S55°10'W
0+00		144.2		74°39'	S74°24'W	S73°55'W
8		139			S00°15'E	

Sta. Dist. A.A. A.R. C.C. M.C.

Tie for Ditch line (Proposed Highline for South Side of Valley)

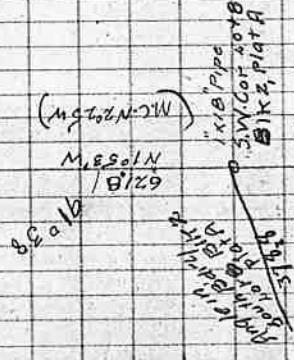
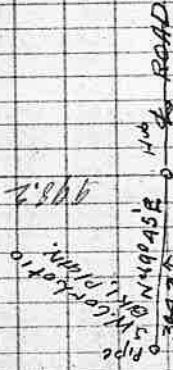
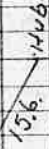
Ditch, Traverso 1086.7 N68°56'W N69°50'W
 1297.2 500' 0.6' E 51°10' E

Road Through PUGH

A14 20° 8' 587' 20" W 586' 40" W
 A13 25' 17" N72° 26' W 586'
 A12 119.5 75'-0.2' N40° 55' W 173' W
 A11 7' 173.1' 28' 15' 564° 03' W 363.3'
 341' 0.45' W 363'-11

PLAT N

PIPE
2 3/4" dia. Timber Road
TRANSVERSE



Anchor Post
NW Cor. Lot 9
Blk 2 Plat 11

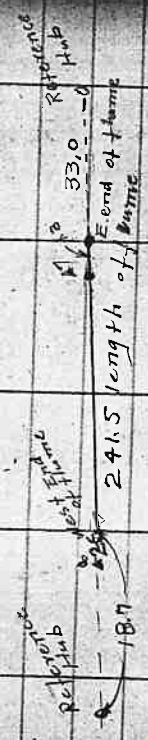
7 Acre Tract - PLAT K.

8 9 10



Flesher -
 Bruce } Chain
 Waldmark }
 Dooley }
 M₂ Nailey }
 Smith team }
 Mar 26, 1911

Flume in L. 56, B. 5, PLAT "I"



Mar. 29, 1911

Traverse of Draw South of
Ferris Tract - PL AT K

68

Flesor - A
Bruce } Chain
Waldmark }
Dooley flag
Jack ..
Smith-team
Mars 1911

M.C.

C.C.

A R

A L

Dist

Sta

1+76.3 on E Bdy of K

148.7

A 4

150.7

A 3

128.8

A 2

124.7

A 1

116.1

0+00

A on E Bdy. L-12, Bk 1 - Q Road

S 68° 02' E 568.00

S 28° 42' E 528.50 E

S 30° 10' E 530.00 E

S 42° 04' E 842.00 E

S 21° 00' W 521.00 W

172.0 to S.W. Ferris Tract



Traverse of East Bdy of PLAT K¹¹
 from N.E. Cox L3 B4 to Stone at
 interior S.E. Cor. L3 B4

69

Fleser }
 Bruce } chain
 Dooly }
 Smith - Leatt
 Mar. 25, 1911

Sta.	Dist	AL	AR	C.C.	M.C.
And West of Oak Tree			85° 08'	500' 08" E	
Rock Interior S.E. Cox L3		83° 15'		585° 16" E	585' 30" E
A 1	477.8			52° 01" E	52' 20" E
N.E. Cox L3 B4 = 0+00	579.6		70° 52'	500' 04" W	South
				N 89° 17' E	

Timber Line Traverse thru
Lots 14 & 12, B.L.S. PLATS

70

Fleser - M
Bruce }
Dooly }
Smith } team
May 27, 1911

SFA.	Dist	AL	AR	C.C.	M.C.
NE. Cor. L. 13 B. 5					
A9	842.5		18°40'	N10°20'W	N60°20'W
A8	505.0		145°25'	N19°00'W	N19°20'W
A7	942.4	73°03'		S15°35'W	S15°20'W
A6	357.2	26°03'		S88°38'W	S88°20'W
A5	654.7	7°52'		N65°19'W	N65°35'W
A4	196.5	78°23'		N57°27'W	N59°25'W
A3	341.4	84°10'		N20°56'E	N20°35'E
A2	317.6		56°34'	S74°54'E	S75°13'E
A1	356.2		108°02'	N48°32'E	N48°10'E
0+00	538.4		31°13'	N59°30'W	N60°00'W
SE. Cor. L. 14 B. 5	599.1			S89°17'W	S88°50'W

A3

417
09/15/10

42 - 250.

225
A1

Sta. Dist. A.R. C.C. M.C.

21.5

1324.6

19.8

395.6

791.7

Pipe

Pipe

Pipe

S.W. Cor A

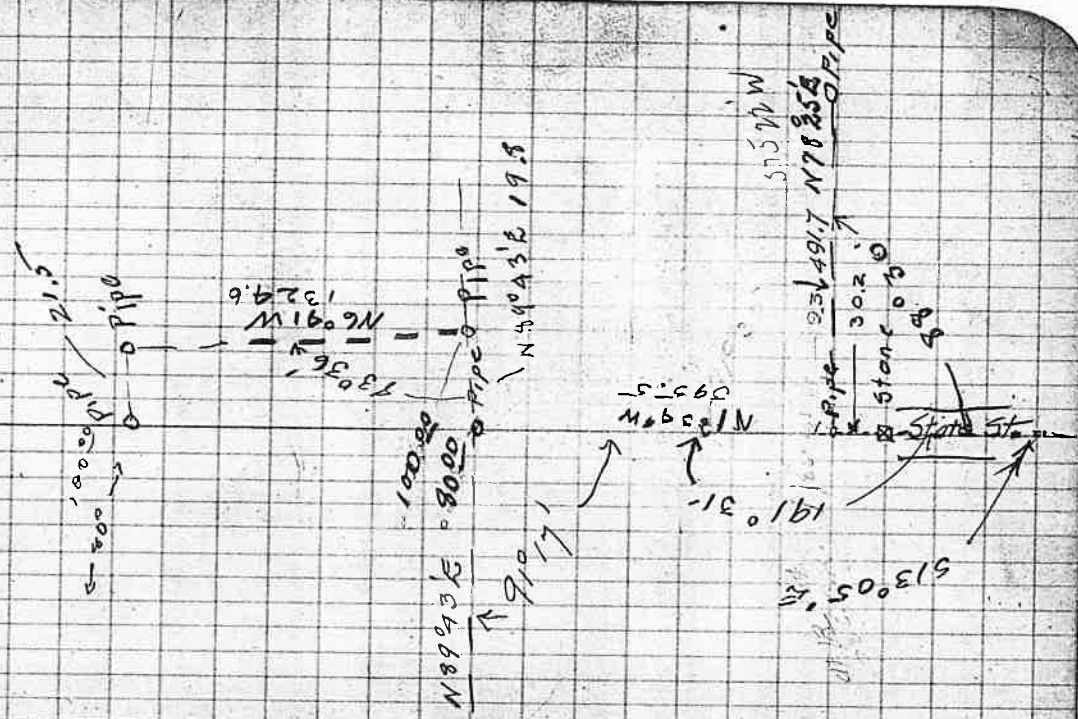
S.W. Cor B

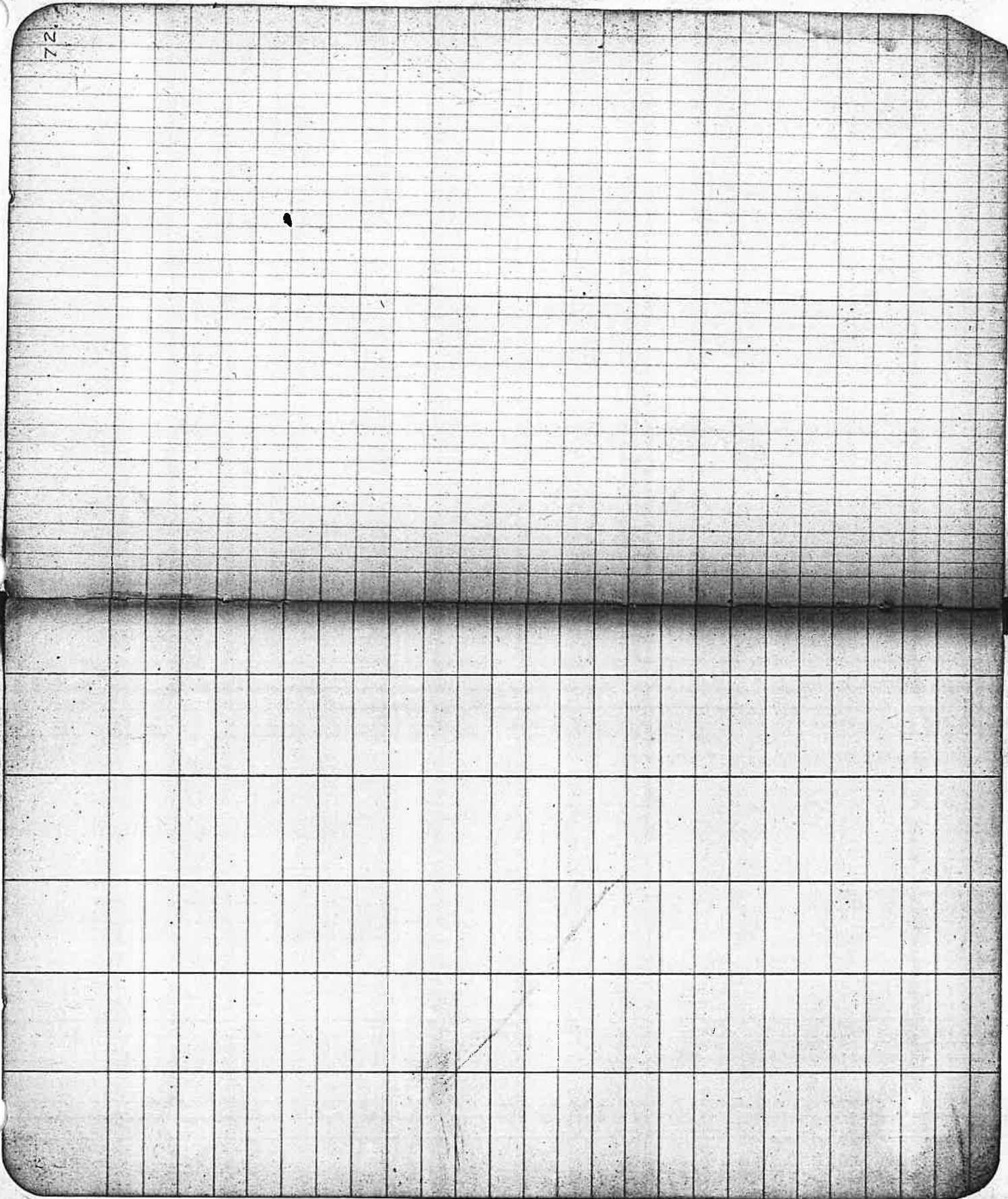
N6°44'W

N49°40'E

N10°37'W

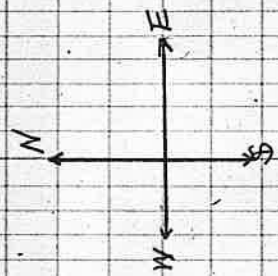
S75°22'W







Check on bearing of line
West of St. John's 7 Acre Tract
North of Lot 1 Bk 1 Plat A



S.E. Cox St. John's
7 Acre Tract

S.W. Cox St. John's
7 Acre Tract

M.E. C 67

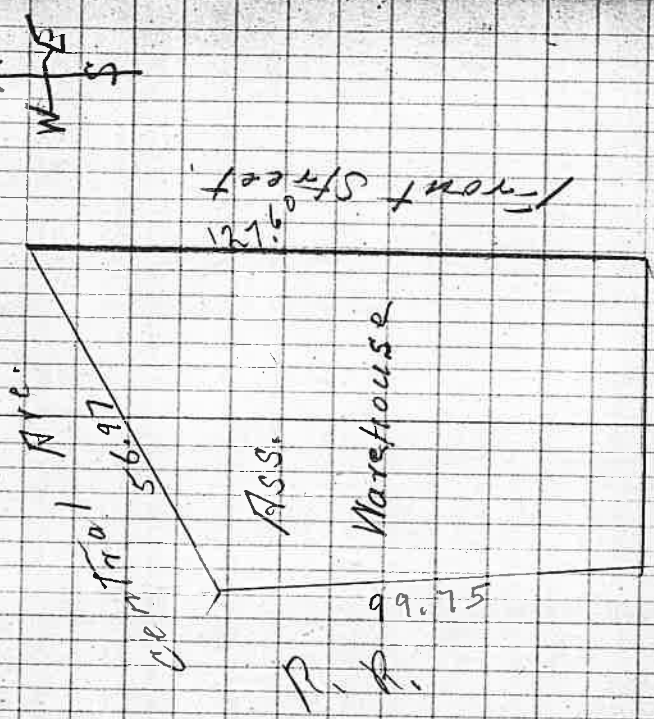
Lot 1 Bk 1
Plat A



Millamette St.

Aug. 30th 1911

Association Warehouse



Weir Measurements Smith's Canyon.

Depth

Dec 21, 1910
7⁰⁰ A.M.

0.45'

6⁰⁰ P.M.

0.43'

Dec 22, 1910

0.39'

7⁰⁰ A.M.

Nov 18, 1910

W. Stahl
Haber
Billings } 3 Hours
Carter
Coppert
Treat

Main
Sta. 4 on Ditch
Traverse

N 16° 35' E
62 x 79 x 5
Ditch runs out.
Swamp begins
Folletts dead furrow
to Main Ditch A 6

34 44
3 x 500 45/61
19 13 x 310

Volts 2037705

222191

00 45
42 45
3112

12947

M.W. Cor C 1 71

Made Ditch to A 1
0 100-03169

Ditch Traverse through Block 2

Sta. Dist. Δk. ΔR C.C. M.G.

AA on Big
Ditch Traverse

Tie	793			N 16° 35' E
A 6	691.9	76.47		N 60° 44' W N 60° 45' W
A 5	395.0	52.26		S 66° 50' W S 66° 51' W
A 4	550.8	33.15		N 77° 53' W N 77° 54' W
A 3	207.8	20.25		N 59° 30' W N 59° 31' W
A 2	195.2	46.04		S 74° 26' W S 74° 27' W
A 1	513.8	7.43		S 66° 43' W S 66° 44' W
0+00	80.0	89.00		S 22° 17' E S 22° 18' E
Tie		18.00		
A 10				555.97

Distances North from
 N.E. Cor lot 1 B.M. 1 Plata 340.0
 N.W. Cor " " " " 420.0

Distances from S.E. Cor. Plat 6 to
 centre O. & C. R.R. Track 100.4
 then 66.0 to hub in County Road.

Elev 196.0 Dist. 634.0
 Elev 155.0

Plat M }
 Beckley - Elev 172.5 Dist. 205.0
 Goff Elev 155.0 }
 Elev. 171.5 Dist. 161.0
 Elev. 155.0

