

Field Book # 66



Date
F.B. 66.

PEB. B. I. INDEX 36

- Barker. R.S. levels on ditch ✓
- Taylor W.A. Melrose ✓ 12-35
- Central Ave. Sutherland 36-39 ✓
- Necks. W.H. - Buckles 40-41 ✓
- Harson O.T. 92-43 ✓
- Haines B.B. 44-56 ✓
- Nachter Park 57-59 ✓
- Haines B.B. 60-61 ✓
- Sunshine Ranch 62-68 ✓
- PhAT G 69-70 ✓
- Cemetery Sutherland 72-76 ✓
- Taylor, Grant for forejoy ✓
- Winchester 77-79 ✓
- S.C. B. & E. Ry
- Abeene Tie

Subscribed by Winchester

R.S. Barker. Aug. 30, 1911.

Levels for Power ditch

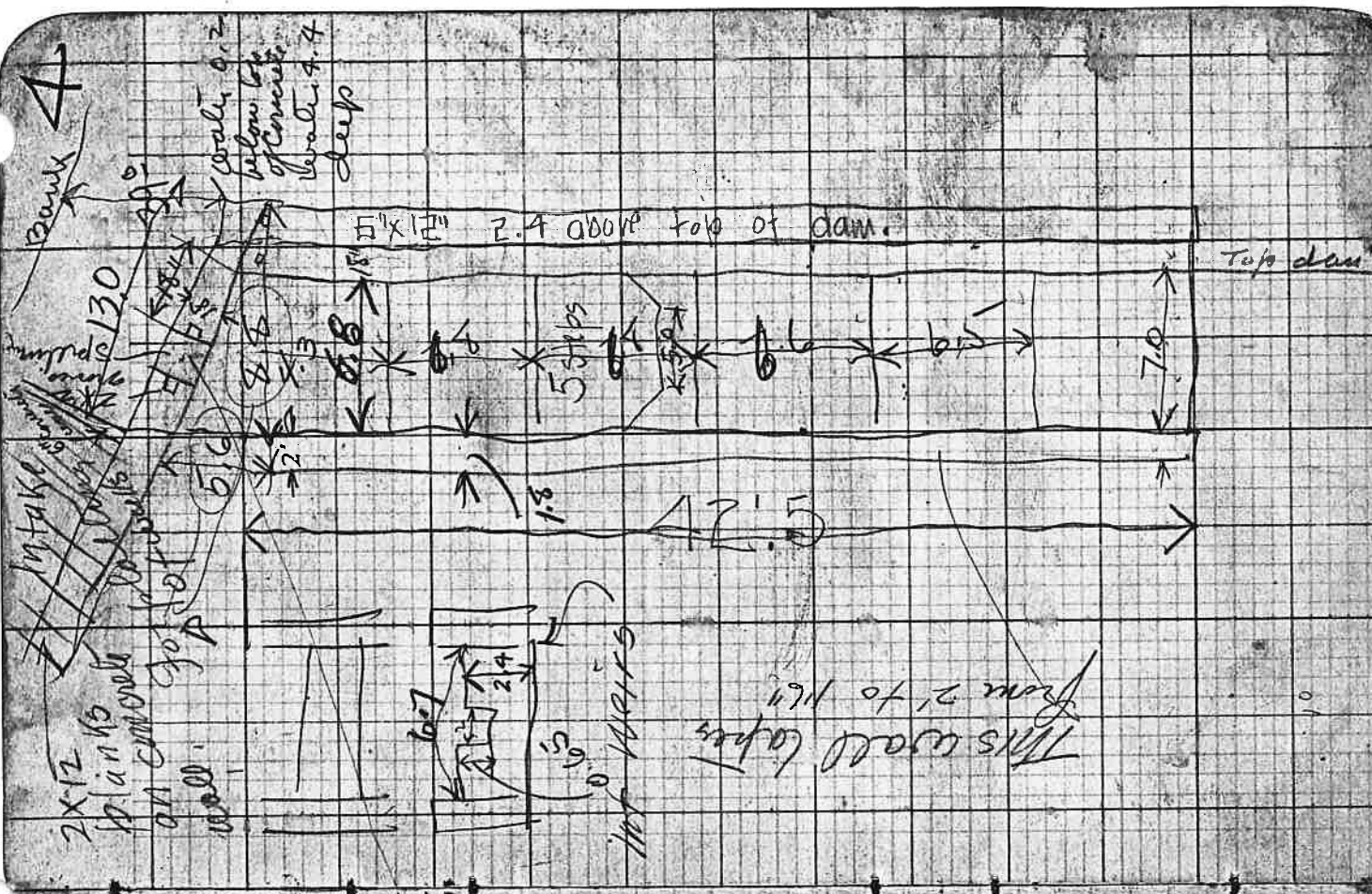
Sta.	B.S.	F.S.	Red	H.I.	Elev
00	1.6			101.6	100.0
1		4.2			
2		4.6			
3		6.3			
TP		6.9			
	7.3			102.0	
4		5.9			
	1.8			98.6	
5		4.5			
6		12.0			
	0.0			86.6	
7		12.0			
	10.7			75.9	
8		4.4			
9		9.8			
	0.9			65.8	
10		12.9			
	0.6			57.1	
11		12.0			
	0.0			42.1	
12		12.0			
	0.0			30.1	
13		8.5			
	1.0			22.6	
14		13.4			
				9.2	490.0

Z

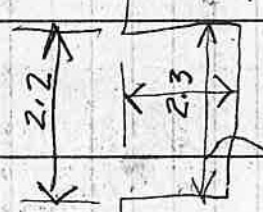
B. S.	F. S.	H. I.	Elev.	B.M.	
0.48	6.76	484.05		483.57	S.F. Cox Stephens & Mosher
0.97	11.59	478.26		477.29	S.W. " NBY Pond
1.44	9.72	468.11		466.67	S.W. " Mostey Mill
0.76	5.26	459.15		458.39	N.W. " " T Parrott
6.27	7.07	459.15		458.89	S.W. " " " Flint
	5.08	458.35		452.08	S.W. " " " Fullerston
	3.75	458.35		453.29	S.W. " " " Hoover
5.80	4.76	460.90		457.60	S.W. " " " Miller
	3.50	459.85		455.64	S.W. " " " Hauck
2.95	4.97	459.85	459.11	456.90	S.W. " " " Templin
12.61	0.74		471.48	454.88	N.E. " " " McGill
12.27	2.20	483.75		481.55	Sykes Mill 20' N. on Mill W. side

3

E	W	N	S
415	3.77	416.00	414.98
44.63	25.69		
29.88			0.99
28.36	29.43	415.97	415.97
29.34			



$$\frac{7.0}{5} = 99.0$$



accurate dimension
 2.14

1.8 water jump over weir

2/14/14
 2/14/14

July 2 1913

Cippolletti Weir on irrigation
 Upper Ditch at Dam
 Could raise 17'
 By damming end.
 (Rise $1\frac{1}{2}$ - $1\frac{3}{4}$)

12" mid

12 M

1:30 PM.

2 $\frac{2}{8}$ "2 $\frac{1}{4}$ "

At

3:00 PM.

1 $\frac{1}{2}$ "

At Waste Way

S. Jackson.		Clarke, Henery Co.		Orcutt	
Aug. 9, 1913				Aug. 11, Monday	Aug. 12,
1	230	240	235	235	230
2	255	245	240	250	235
3	235	275	230	230	240
4	230	290	265	235	235
5	235	270	260	230	240
6	250	265	240	240	245
7	255	270	250	235	225
8	235	240	230	250	255
9	230	245	250		250
10	245	255	255		240
					240
	275	260	245		250
	270	240	255		275
	285	250	245		285
	275	250	245		240
	260	255			250
	250	250			245
					255
Aug 11					240
	270	255	230		235
	250	230	245		240
	235	230	235		235
	250	205	240		250
	245	310	270		230
	255	285	260		240
	270	250	240		235
	270	255	235		240
	275	240	230		260
	250	255	230		235
					200
	250	235	235		196
	255	260			225
	245	240			
	240	230			

786 yds

1/11

Med.	Aug. 13/13	Aug 13/15
1	250	235
2	240	240
3	235	245
4	240	245
5	245	250
6	250	240
7	235	245
8	250	250
9	245	255
10	250	245
11	265	250
12	230	245
13	245	250
14	240	255
15	245	240
16	235	255
17	240	250
18	230	250
19	245	245
20	250	255
21	235	250
22	230	250
23	235	255
24	230	250
25	235	250
26	220	255
27	235	250
28	255	255
29	240	250
30	245	250
31	230	250
32	235	250
33	290	250
34	250	250
35	235	250

Oak
 Aug 13/15

Hub
 26.975

RS

S. Pine.
Aug. 15, 1933

1	230	240
2	250	220
3	250	230
4	240	230
5	250	240
6	240	235
7	260	230
8	250	235
9	255	240
10	250	235
11	245	235
12	250	255
13	245	250
14	250	260
15	240	255
16	235	240
17	250	245
18	240	230
19	255	235
20	250	230
21	250	230
22	250	235
23	250	240
24	250	245
25	250	240
26		240
27		235
28		240
29		245
30		245
31		240
32		250
33		235

Byrke
Aug. 16
Binder

230
250
255
260
250
250
255
260
250
255
250
290

Aug 16

250
250
255
250

1214

Aug 17

250
255
250
255

250
255
260

Sheldon Aug. 18	Batches Aug 20	Byrko W. S. Aug. 18	Aug. 19	Slade W. S. Aug. 19
1 250	255	255	255	290
2 250	250	260	250	260
3 255		250	275	275
4 250		265	300	290
5 255		260	275	
6 250		250	285	Aug. 20
7 270		250	275	250
8 265		255	285	280
9 255		250	250	270
10 260		250	275	270
11 250		250	280	290
12 255		275	275	290
13 250		250	270	280
14 255		240	275	275
15 265		260	290	290
16 255		250	270	260
17 260		280	280	275
18 260		285	285	260
19 255		290	290	260
20 260		270	275	300
21 250		275	275	265
22 255		280	280	305
23 250		285	285	295
24 255		270	270	270
25 250		290	290	410
26		295	295	300
27				305
28				290
29				370
30				270
				285
				270

1123711

Water

S. Y

N. Y.

Dist.

- 0+15
- 0+50
- 0+72.5
- 1+00
- 1+09
- 1+45
- 1+55
- 1+95
- 2+37
- 2+40
- 2+90
- 3+20
- 3+30
- 3+70
- 4+00
- 4+09
- 3+80

4" tile

West from 1/4 Cor bet 11
Remarks 12+13
Mays, 14

Sta. Dist. Vert. Inc. Dist. Houd.

0+00

1250

12+00

26+40

21+00

41+950

2450

12+00

0+00

Dec Cor bet 11 & 13

20+00 Leave timber

15+00 Bentler timber
fence
creek

7+00 Ridge corner NW
6+00 of Creek corner E.

1/4 Cor bet 12 & 13

W.A. JAYLOR - RANCH
DIST. KEARNEY DIST. HOR. DIST.

PAYDUM LINE
W. FROM 1/4 COR. BET. 12-13
MAY 5-1917

7

9 STA. 26+40

~~3" WIRE~~

SEC. COR. - 11-12-13-14
3" OAK POST.

26+90

50.0

28+90

2179.5

4+10.5

710.5

0+0.0 = 1/4 COR. BET. 12 AND 13

CREEK 3" WIRE 2035.0 COU. N
CREEK 3" WIDE 1359.0 COU. N
CREEK 3" WIDE 1219.0 COU. N
WIRE FENCE 414.8
S.W. COR. CLAIM 411.5 N STA 10+00

1/4 COR. KEARNEY DIST. 11-19-17

FROM LINE NORTH BETWEEN 11-12
 STA. DIST.
 MAY 6-19

26+40
 29+11.3
 19+34.6

328.7
 376.7

PHOTO = STA. 26+90 ON LINE BETWEEN 12-13

N. CO.

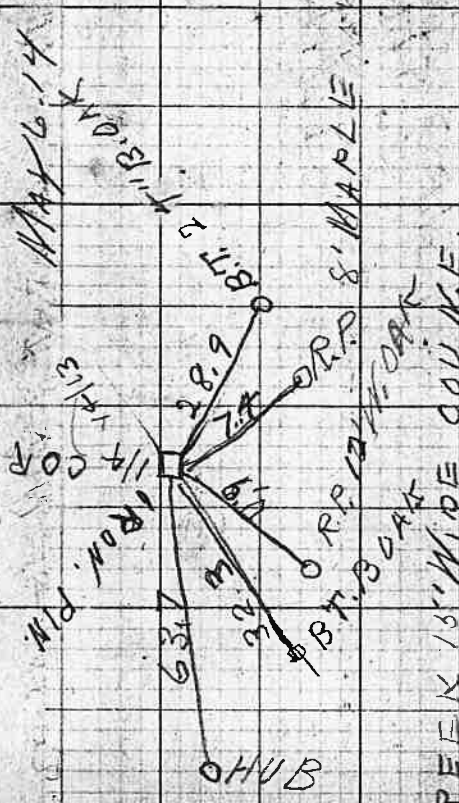
$41.8 \div 1/4 60 = 171.2$

DIA 26+40

ALL FROM STA. 0+00

CREEK 2320 SBANK 2350 NBANK COU. N.M.
 SOUTH FENCE 1869
 E. AND W. ROAD NORTH FENCE 1921
 CREEK 15' WIDE 1680' COURSE
 PRAIRIE

RANDOM LINE SOUTH BET 13-17/14

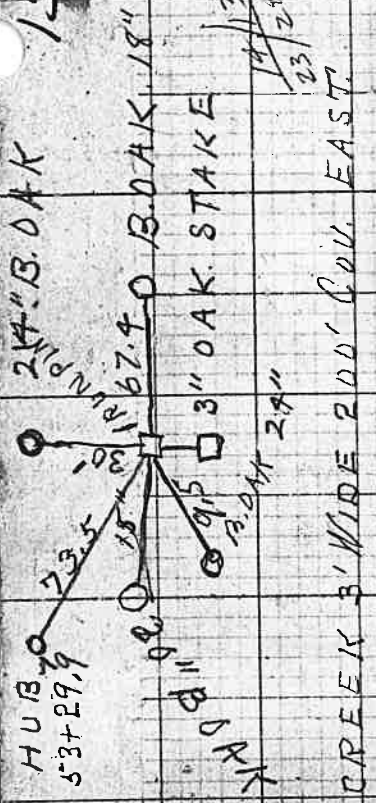


STA.	DIST.	VER. INC.	HOR. D.
26+20.6	19.5	34.94'	150.0
25+0.0	82.1	17.85'	80.0
24+18.9	152.1	50.56'	155.0
22+66.8	82.4	11.95'	80.0
20+29.7	155.0	20.36'	160.0
19+98.3	181.1	50.39'	300.0
16+40	248	6.51'	300.0
73+357	318.8	80.48'	260.0
70+16.4	336.7		
6+79.7	431.2		
2+48.5	248.5		
0+00			

START UP BRIDGE
CREEK 130' COU. EAST

20' ENTER TIMBER LEVEL

= STA. 2690 ON LINE BET 12 & 13



STA.	DIST.	VER. A	INDIS.	HOR. D	MAY 7-14
53+29.9	335.8	7° 9'	240.0	238.1	-2.3
50+94.1	94.7				
99+99.4	234.2	9° 44'	240.0	236.5	-2.3
47+65.2	175.7				
45+89.5	226.8	2° 35'	230.0	229.8	-3
43+62.7	141.1	7° 12'	144.0	142.9	-1.8
42+21.6	15.8	7° 32'	160.0	158.6	-1.6
40+63.6	20.4	3° 32'	205.0	204.6	-1.6
38+59.6	187.3	7° 21'	188.0	186.6	+7.7
36+72.3	76.1	18° 39'	80.0	75.8	+3
35+96.2	197.6	10° 27'	202.0	198.6	-1
33+98.6	173.3	13° 51'	180.0	174.8	-1.5
32+25.3	223.2	7° 53'	230.0	227.8	-4.6
30+02.1	258.2	9° 36'	266.0	262.8	-4.1
27+43.9	128.4				

BENCH LAND
TOP OF RIDGE

24" B. OAK
3" OAK STAKE
CREEK 3' WIDE 200' COV. EAST

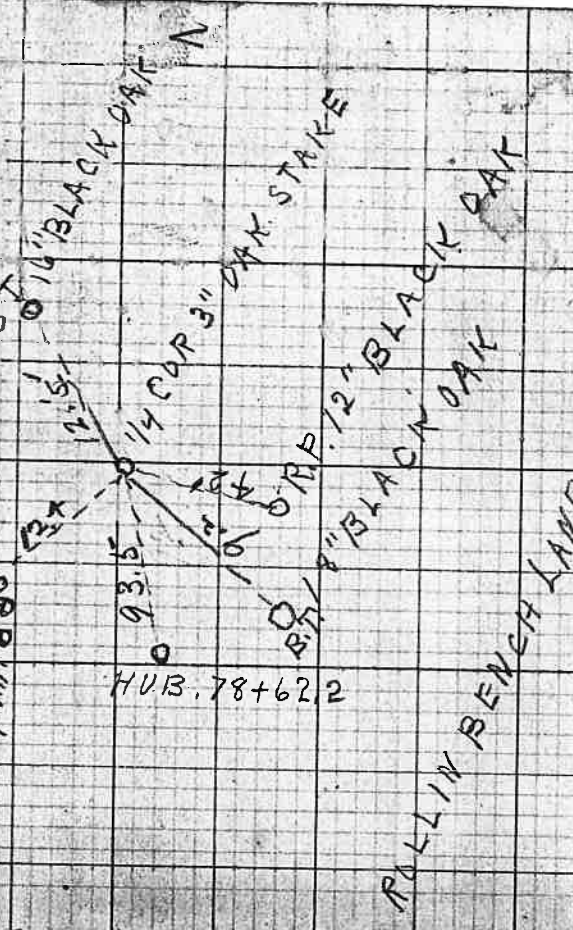
24" B. OAK
3" OAK STAKE
CREEK 3' WIDE 200' COV. EAST

MAP-8-14

DIST YER. Δ IN. DIST. HORD

STA	DIST	YER. Δ	IN. DIST.	HORD
78+62.2	93.5	110'16"	95.0	98.2 ± 7.3
76+84.6	177.6	5°20'	180.0	179.2 ± 1.6
73+78.9	305.7	3°19'	300.0	299.5 ± 6.2
70+95.0	283.7	5°22'	285.0	283.7 ± 2
70+02.8	92.2			
69+08.2	97.6	18°29'	100.0	97.8 ± .2
67+61.2	147.0	29°21'	170.0	148.2 ± 1.2
66+81.3	79.9			
64+83.0	198.3			
61+94.7	308.3	6°8'	300.0	298.3 ± 10.0
60+86.8	138.9	9°03'	140.0	138.1 ± 8
58+95.1	190.7	3°41'	195.0	194.6 ± 3.9
57+77.7	68.4			
56+46.8	130.9	14°56'	135.0	130.4 ± 5
	316.9			

NYO 341 H.M. 9, 1, 1, 0



ROLLIN BENCH LAND
DEEP CANYON 15' SOUTH SIDE
DEEP BED OF CREEK - 20'

DEEP CANYON EAST SIDE
MORT

66x08 H.V.B. ON FENCE LINE

FENCE 130' FROM STA 64+83.0 AND 64' EAST
15' OFF FENCE COR

ROCK HUB 60.3
66x08
66x08

CANYON N. SIDE TO S. SIDE 15' CORNER

TIMBER

LINE EAST FROM
SW. COR. TAYLOR

17

PP. O LAUREL 6"
SW. S.W.

60.3
4.7
4.7
OPP LAUREL 6"
P.P. 17A
PP LAUREL 8"

IRON PIN

HUB 66408

LINE EAST FROM
SW. COR. TAYLOR

LINE EAST FROM SW. COR TAYLOR
MAY 9.

ST. A DIST. VERA IN. DIS. HOR. A. D.

270.7 12° 26' 300.0 293.0 - 22.3

497.5 10° 35' 4.60% 462.2 - 4.7

478.9 110° 41' 485.0 474.9 - 1.0

70° 14' 300.0 + 49.7

323.5 140° 24' 300.0 290.6 + 32.9

60.3

0700

SCATTER PIN
P.E. 8
TIMBERS

SW. COR. TAYLOR

18

MAY 9-11-14

RAND. WEST BODY CL. 78. NORTH STA. DIST. VER. IN. DIS. H.D.R.D.

30+03.0

297.7

27+05.3

466.5

22+08.8

865.4

13+73.4

212.7

11+60.7

316.5

8+77.2

122.9

7+21.3

120.4

6+00.9

175.4

4+25.5

172.5

2+53

253.0

0+00

502.8

255.0

WIRE FENCE 235'

ENTER TIMBER

CREEK 3' WIDE 575'

240 LEAVE TIMBER ENTER PRAIRIE

CREEK S. BANK 127' N. BANK 135' CO. EAST

WIRE FENCE 162'

R.

RAILROAD

19+23.2 ON LINE EAST FROM SEC 6 R TAYLOR

SOUTH FROM NORTH BDRY CL. 48
 MAY 11. - 1/4 TO 1/4 COR. BET. 13 AND 24

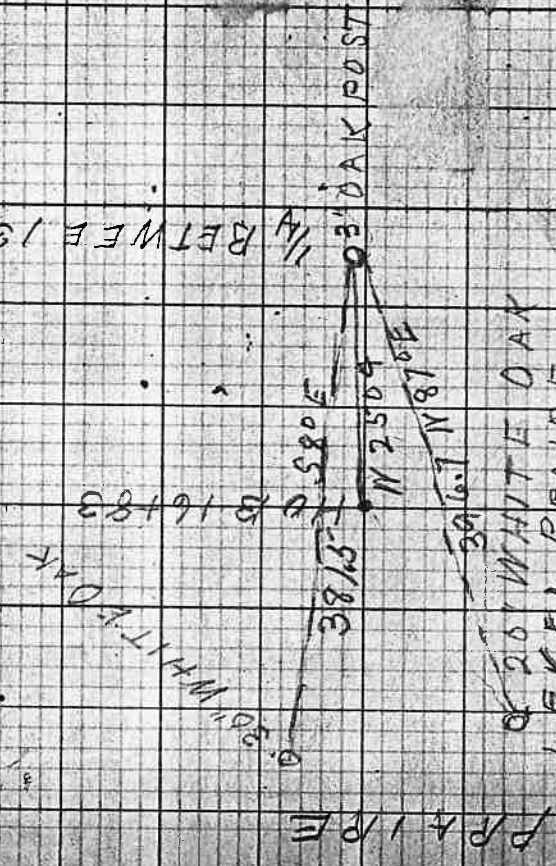
20

STA DIST VERMILIBIS HARD

19403.5
 16783
 0700

226.5 WEST FROM STA. 16783
 1683

1/4 BETWEEN 13x24



5250 - 10 - 150
 9176.5 = 0700
 14771.5
 7+192
 54000078

SOUTH ON WEST BOU. CLAIM 48
RANDOM MAY 12-14

STA. DIST. VERA IMPDIS HARD

T 27-7

= S.W. CUR CL 48

23+70.6	42.4				
22+98.2	436.2				
18+62	233.1	10° 7'	240.0	236.3	3.2
16+28.9	129.9	8° 55'	440.0	138.3	
14+99.0	375.6				
11+23.4	481.9	20° 36'	300.0	299.2	181.7
6+42.0	205.1				
4+36.9	436.9	2° 53'	300.0	299.6	137.3
0+0.0 =	19+23.2	ON LINE	E. FROM S.W. CUR	TAYLOR	



ROLLING

TIMBER - ASSEND
TIMBER DESEND
CREEK BANK 394 S BANK 400 COU. E

CREEK N BANK 325' S BANK 375 COU. EAST
CREEK N BANK 265' S BANK 270'
LEVEL IN OAK TIMBER STAB 62 TO
S.W. COR CLAIM 48

STA 221985

1361

1362

1363

1364

1365

1366

1367

1368

1369

1370

1371

1372

1373

1374

1375

1376

1377

1378

1379

1380

1381

1382

1383

1384

1385

1386

1387

1388

1389

1390

1391

1392

1393

1394

1395

1396

1397

1398

1399

1400

22

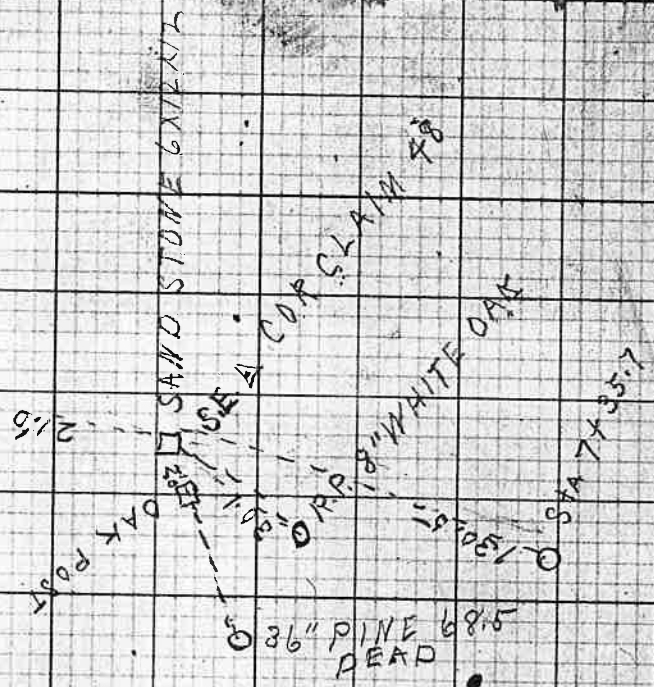
RANDOM SOUTH BOUNDARY CLAIM 48

MAY 12-14

7.7

122.3

ORP WHITE OAK 20"



ASSEMB

TIMBER

WEST SIDE ROAD 414'

STA. DIST. VER. LANDS. HORD

8+66.2 = S.E. Δ COR. CL. 48

130.5

284.5

454.2

= S.W. COR. CL. 48

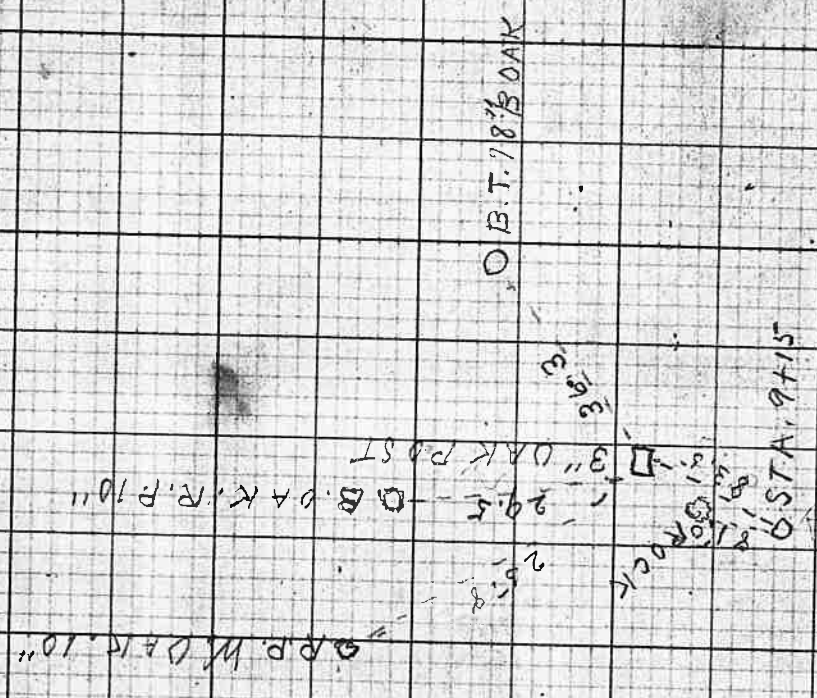
4+51.2

0+00

PAV DOWNS SOUTH BORY. CL. 48. 23
 MAY 12-14

STA. DIST. VEPA. IM. DIS. HO. B. D.

9+99.4 S.E.A. COR. CL. 48
 83.3 M.F.
 9+15.9 103.9
 8+12.0 386.7 6°43' 300.0 297.9 58.8
 4+55.3 150.9
 3+07.4 304.4 3°44' 300.0 299.4 45.0
 0700 = S.E.A. COR. CL. 48. EXT.



SOUTH SIDE OF CANYON 200'
 BOTTOM " 80'
 NORTH " 60'
 GREEN 3" WIDE 100' COUN. W.W.
 SOUTH END SEALY BARN 70.0
 NORTH " 100.0
 WEST SIDE " 16.0

O.B.T. 78 1/2 OAK

MAY 13 1914 24

RANDOM SOUTH BOUNDARY CLAIM 48

SE COR CLAIM 48

SE EXT 2

1/2" OAK POST

PP. 10" LAUREL

C.S. WIT. TREE LAUREL 10"

BT. 30" B. OAK 178

TIMBER

ASSEND. LAUREL OAK FIR TIMBER

825-

DIST. VER. INDIS HORD

SE COR CL. 48

8+27.1

7+41.7

1+98.9

0+00

85.4

542.86044

6044

198.9 12027

SE. INT. Δ COR CL 48

2483-3.4

300.0 297.9

200.0 195.3 +3.6

CL 48

RANDOM EAST BOV. CLAIM 48
 MAY BAND 14. 14

STA. DIST. VERA IN DIS HORD

20+18.3	354.2	16+67.1	26+63	189.5	190.0	189.5	3.3
43+43.2	700.0		9+68.3	300.0	300.0	293.3	39.8
36+73.2	1607.5		12°10'	235.0	229.7	12	
20+36.7	200.1		6°47'	300.0	297.9	22.3	
18+35.6	228.5						
16+07.1	320.2						
12+86.9	372.2						
9+14.7	126.4						
7+88.3	186.2						
6+02.1	333.1						
2+769.0	269.9						
0+00	SE. COR. CL. 48						

PR AIR

OLD FENCE 161' E AND W

CREEK 1286'S. SIDE 1300' M. SIDE COW WEST
 FENCE 300

ROLLING

DESCEND. OAK LAUREL FIR TIMBER
 TOP OF RIDGE

WILSON NORTH FENCE 140 M STA. 12+86
 ASSEND SCATTERING TIMBER

CREEK NORTH BANK 300' COW WEST
 CREEK SOUTH BANK 275'

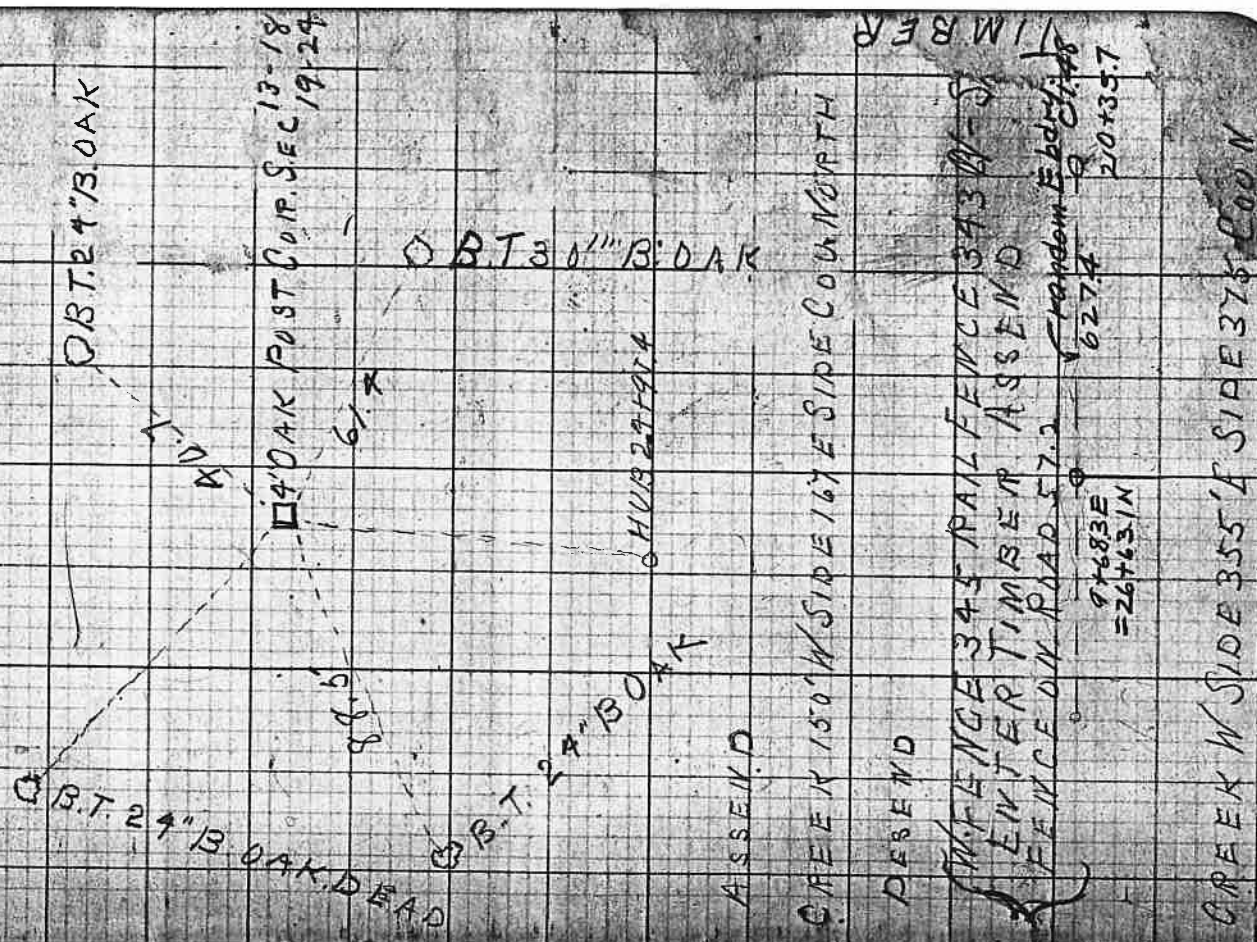
CREEK 2' WIDE 135' COW N.W. ASSEND

DESCEND. LAUREL OAK FIR TIMBER

RAN DL IN EAST BET. 13 AND 24

MAY 14 14

STA. DIST VERAIN DIS HORD.



26+52.1	160.7	110°33'	165.0	161.6 - 0.9
24+91.7	314.8	8°37'	300.0	296.6 + 19.2
21+76.6	136.5	7°10'	140.0	138.9 - 3.4
20+41.1	143.2	5°30'	144.0	143.3 - 0.1
18+97.9	180.6	4°46'	180.0	179.4 + 1.2
17+17.3	184.7			
15+32.9	218			
13+14.9	376.6	7°8'	300.0	297.7 + 1.1
9+68.3	528.3			
4+48.0	740.0			
0+00	= 1/4			

COR. BET. 13 AND 24

CREEK W SIDE 355' E SIDE 375' COON

RAIL FENCE 345
ENTER TIMBER ASSEND
FENCE ON ROAD 57.2
RANDOM ELEVATION
97683E
= 26+63.1N
6274
20+35.7

CREEK 150' W SIDE 167' E SIDE COUN NORTH

ASSEND

DESCEND

O.B.T. 30" B. OAK

HUB 271914

O.B.T. 27" B. OAK

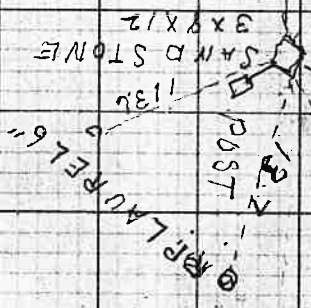
OAK POST COR. SEC 13-18
19-24

O.B.T. 4" B. OAK

A.M.

O.B.T. 24" B. OAK DEAD

PAWDOM LINE SOUTH BET. 19 AND 24
 MAY 15-14



B.T. 20" W. OAK

6 R.P. LAUREL 10"

B.T. 10" B. OAK

STA. DIST. VERA IN DIS. HOR. D.

26+36.6	113.6	1/4 COR	BET. 19 AND 24		
25+23.9	133.6				
23+90.4	124.1	12° 34'	125.0	12 20+2.1	
22+66.3	245.4	1° 53'	249.0	243.9+1.5	
20+20.9	365.1	80° 22'	300.0	296.8+68.3	
16+56.8	116.4	7° 53'	120.0	118.9-2.3	
15+39.4	210.1	80° 06'	210.0	207.9+2.2	
13+29.3	177.9	13° 57'	185.0	179.5-1.6	
11+51.4	213.8	8° 35'	220.0	217.5-3.7	
9+37.6	298.7	10° 44'	300.0	294.7+4.0	
6+38.9	81.9	17° 41'	85.0	81.0+0.9	ASCEND
5+57.0	55.7	30° 49'	300.0	299.3+257.7	
0+00					

W.S. CAMPBELL 360' S.S. 1 P.E. 550'
 COR. SEC. 13-18-19-21

MAR 16-14 20

NORTH BET. BAND 18

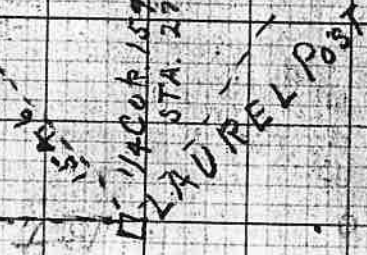
10° 30' 18" 2 4' } 1/4 Post To
2 2' }
HUB 27+95.7
1846

GBT 30" B. OAK

HUB 27+95.7

1/4 COR 1576 SOUTH H. OF
STA. 27+95.7

GBT 30" B. OAK



STA. DIST. VERT. IMP. DIS. HORD.

7+8
12-13

53+27.2	271.8	110 3'	300.0	294.4	10.2
50+55.4	916.5	19° 11'	300.0	290.9	
41+38.9	575.1	3° 37'	300.0	299.4	44.7
35+63.8	399.1	6° 01'	290.0	289.4	2.4
32+19.7	286.0	12° 08'	140.0	136.4	7.6
29+33.7	138.0	5° 58'	590.0	586.8	27.0
27+95.7	154.9	10° 45'	300.0	294.7	
12+89.6	366	6° 3'	300.0	298.3	68.3
8+37.5	447.1	5° 5'	250.0	249.0	198.1
5+58.1	179.4				
1+27.6	430.6				
0+0.0	127.6				

SEC COR 13.18.19.24

57
117

STA.

DIST.

VERA

IN DIS

HOR.D

WEST BET. 12-13

MAY-16-14
29

26+57.6

22+37.5

19+61.9

9+68.2

6+56.2

0+00

420.1

276.6

993.7

312.0

656.2

300.0

300.0

1.80

300.0

298.9

299.4

178.6

297.7

CREEK E BANK 200' W B X N 1/2 265' E DRAIN
7 CREEK E BANK 27' W BANK 33' COUN

CREEK 675' E SIDE W SIDE 690' COUN. W.
ROAD E FENCE 338' W FENCE 393'

53+27.2 SEC. CAP 7.18.12.13

MAR 18 1930
NORTH ON EAST BOU. CL. 46

PRAIRIE
SCATEPINDO
TIMBER

WIRE FENCE 971
CREEK. 340 S BANK STOS. BANK COUE

STA. DIST. VERA IN DIS. HOR. ID

18+48.2
13+30.4
3+33.7
0+00

547.8
996.7
333.7

MAY 18 31

EAST ON E BOUCL 46

DIST. VERA IN DIS. HORD

STA.

16+16.9

752.7

11+63.7

258.7 50

9+05.0

260.0 259.0-0.3

90.5

0+00

TEL POST

17.7

STN

97.05.0

~~N.W. 25.0~~

CLAWFIELD POST

STA. 13+29 LINE E. EAST BOUCL 46

NORTH BET. 10-AK018 MAR 18 32
 NORTH FROM SEC COR 7-18-12-18

= NORTH FROM SEC COR 7-12-15-18

STA	DIST.	VEPA	INCL	HOVD
26775.8	259.4			
23+16.4	250.4	5°18'	250.0	249.9 + 1.5
20+66.0	156.8			
19+09.8	298.9	5°46'	300.0	298.5 + 0.4
16+10.9	227.0			
13+83.9	184.8	9°30'	190.0	187.4 - 2.6
11+99.1	69.9			
11+39.2	218.6	5°59'	222.0	220.8 - 2.2
9+10.6	343.3	7°59'	300.0	298.9 + 4.4
5+67.3	216.8	9°17'	220.0	217.1 - 0.9
3+51.1	351.1	5°03'	300.0	298.4 + 5.2
0+00				

RANDOM LINE NO RTM BET. 12-19
 MAY 19.14
 33

TAYLOR

STA	DIST	VEPA	IN DIS	HOR. D
52+83.8	- Witness Cor-Secs.	667.12		
51+74.3	109.5	14°06'	115.0	111.5-2.0
50+65.3	109.0			
49+22.4	142.9	28°14'	165.0	146.4-2.5
44+91.8	152.8	16°10'	160.0	153.7-0.7
	278.0	22°08'	300.0	277.8
	430.0			
43+92.7	99.1	17°10'	102.0	98.9 +0.2
41+97.1	245.6	11°05'	250.0	245.3 +0.3
39+51.5	195.4	3°39'	200.0	199.6 - 4.0
36+77.4	272.1			
36+73.8	165.7			
33+05.3	208.2	14°05'	215.0	208.5-0.2
31+71.6	133.7			
30+05.1	166.5			
27+81.9	223.2	8°36'	225.0	222.5 +0.7
	206.1	6°37'	210.0	208.6-2.5

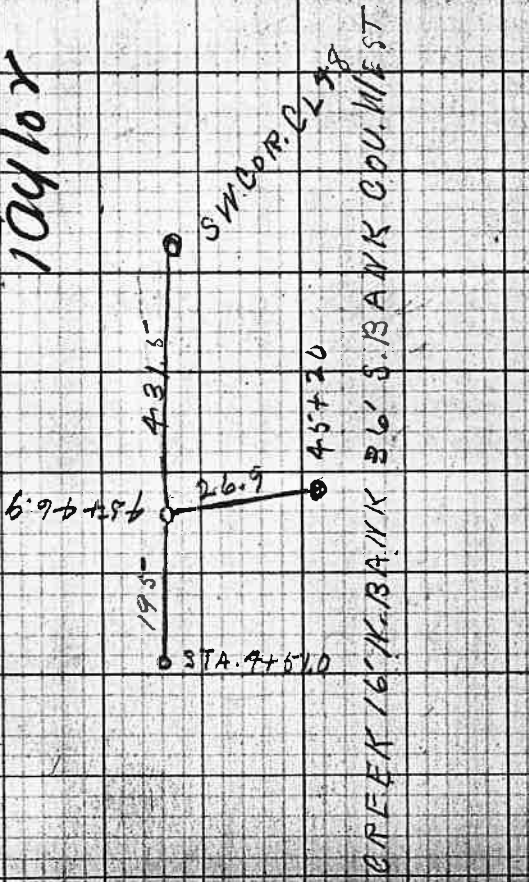
D.L.C. 2' EAST

< D.L.C. 69-147 N. AND 8' E OF LINE

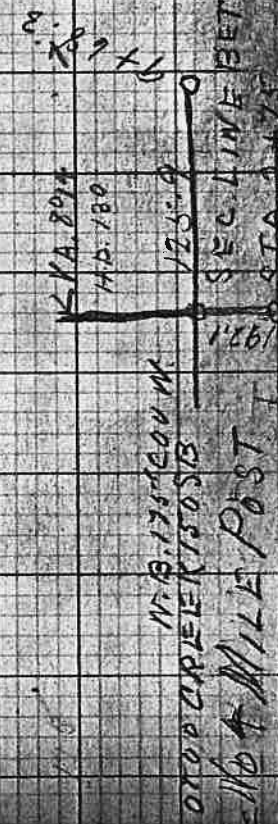
35

MAY 21-14
COUNTY ROAD SOUTH

Taylor



CREEK 180' S. BANK N. BANK 2087' CO. W.



STA. DIST. VER. INDIS. H. ORD.

45+46.9	26.9			
45+20	127.0			
43+93.0	393.0			
40+00	235.8	3052'	240.0	2397-3.6
37+64.2	164.2	4017'	165	1675-0.8
36+00	200.0			
34+00	350.0			
30+50	250.0			
28+00	192.7	4019'	200	1994-6.7
26+07.3	357.3			
22+50	411.0			
18+39.0	339.0	3023'	300.0	299.5+89.5
15+00	300.0	407'	300.0	299.2+8.8
12+00	925.0			
2+75.0	275.0			
0+00				

OTOP CREEK 1505'S
16 1/4 MILE POST
SEC. LINE BET. 24
STA. 21 1/2

STA

DIST

36+93

L 3 X 4 B 2

L 4 X 6 B 1

30+26

L 2 X 3 B 2

30+21.8

3 X 4 B 1

27+00

2 X 3 B 1 - 1 X 2 - B 2

19+68.9

NW COR B 2 PLATA

19+37.9

L 1 X 2 - B 1

19+07.1

16+96

E 1/2 W 1/2 E 1/2 LOT 1

15+71

W 1/2 W 1/2 B L N 1

14+42.6

SW COR B L K J PLATA

11+26.7

8+17

E SIDE DITCH

7+81

W SIDE DITCH

5+56.3

0+00

JUNE 5-14 36

SUTHERLAND ORE

CENTRAL AVE

CENTRAL AVE

STATION
ST 40+00
END OF
PRVEM ENT

UNIQUE ST

ST MON

1948

SUTHERLIN

DRAIN DITCH - 1948

STA.	DIST	DESCRIPTION
55+58.1	95.0	W 4 AC E 11.0 M LOT 7
54+63.1	100.0	
53+63.1	76.7	LOT 6 X 7 B 2 - LOT 7 X 8 B 1. P.A.
52+86.4	1700	
51+86.4	1700	
50+86.4	1700	
49+86.4	4.3	
49+82.1	W. 20.0. E. 10.0 A LOT. 7	
49+22.6	59.5	LOT LINE B. 2. PLAT - A
48+86.4	36.2	EAST BANK DITCH 48+72
47+86.4	1700	DITCH W. BANK
46+86.4	1700	
45+86.4	7+00	L 5 X 6 B. 2 L 6 X 7 B 1
43+92.8	43.6	NAIL IN CENTRAL AVE
44+66.6	N. 15.0. E 8.97	L. 6
40+91	L 4 X 5	B 2
40+89.3	L 5 X 6	B 1

STA. DIST.

64+72.4	2.9+10 B.1 - L.8 x 9. B.2
61+70.5	331.9
60+63.1	77.4
59+63.1	1+00
58+67.1	96.0
58+63.1	7.0
57+79.8	88.3
57+63.1	11.7
56+63.1	1+00
55+63.1	1+00
	5.0

IRR. FLUME 12" x 12"

1/4" BOT 8

30

STA

0.1 S

6+00

5+00

4+00

3+00

2+00

1+00

1.25

1.0

1.82

S

S

S

W. H. WEAVER
6-13-14

RANDOM WEST LINE CL. 40

RIVER 50'

CREEK 30' W 34'S

CREEK 27'S 34' W

CREEK 18'S

N.W. COR = 4700

N.W. COR.

RIVER 64'

RIVER 10' WEST

RIVER 50' W. CREEK S BANK 26+35 N BANK 26+65
COU. WEST

RIVER 25' WEST

RIVER 5' WEST

CREEK SOUTH BANK 16+80 COU. WEST
NORTH BANK 17+36

RIVER 49'S

RIVER 50'S

RIVER 50'S

RIVER 49'S

RIVER 49'S

FENCE 506'

FENCE 120' FROM STA 97+65
2.25' ROCK

STA. VER. IN. D. HORD

Δ 5

310.7

Δ 4

3717.5

Δ 3

472.1

3996+172

Δ 2

33+946

Δ 1

1894

4014'

Δ.1

39777.6

39735.6

29747.1

5390

202'

300.

299.8

239.2

29747.1

41885

25753.1

3194.0

21767.6

3185.5

18791.7

2176.2

16774.5

216.9

15793.5

8170

13768.9

2124.6

9765.1

47038

0700

9765.1

41

WEGLEY
IND. D. FORD

DIST VER. Δ

STA

2117.8 Δ 8 to STA 9+66.7

Δ 8

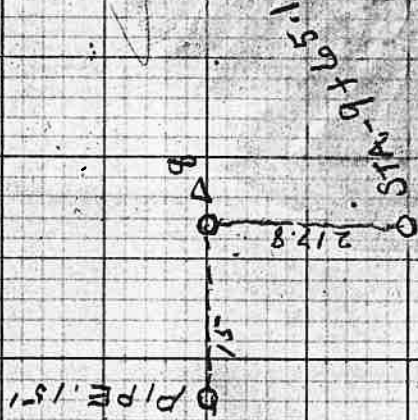
Δ 7

Δ 6

694.5

191.4

147.8

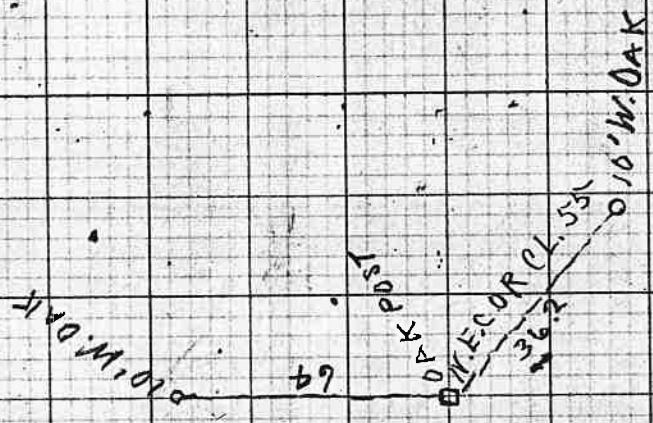


CREEK 2 WS - CREEK 10 SW 26

42

△ EAST SIDE CL. 55

LARSON N. 6-27-14



N.E. COR CL. 55

△ EAST BOUND. CL. 55

STA. DIST. VERA IN. DIS. HORD

11+22
0700
11+22

STA DIST. VERA. IN. DIS. HORD

				+332
		300.0		
		213.		
369.9				
		260		+8.
		180		-9
67.2				
		240.		-3
		270.0		
		80.0		+4
		95.0		-3
		170.0		+1.8

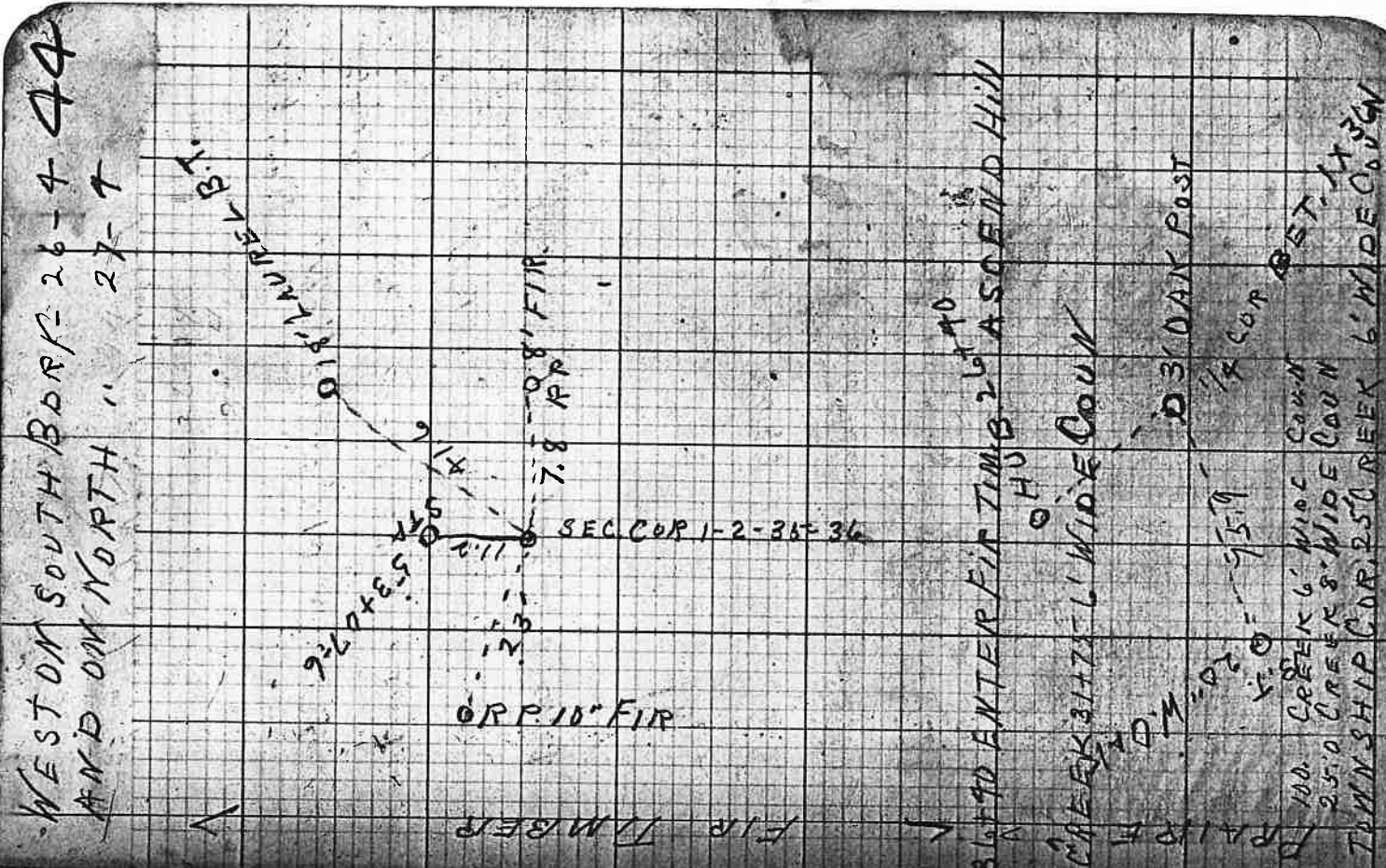
STA 12 F. Run

FENCE 32'S

2+14.7
2+98.2
0700

JOHNS IN. FENCE 20'S
JOHNS IN. COR N. 1800 80.5 SW.
W.E. COR 21.5'S

STA	DIST.	VERA	HAINES	7-16-14
53+07.6	173.1	8019'	17550	1435-04
57+66.5	237.2	6°32'	240.0	238.4-08
49+26.9	93.6			
48+33.3	159.6	22°58'	170.0	156.5+3.1
46+73.7	217.0			
44+56.7	66.6			
43+90.1	208.7	1°57'	208.0	207.9+0.8
41+81.8	99.3	12°57'	100.0	97.5+1.8
40+82.1	264.8	25°17'	265.0	230.6 34.2
38+17.3	278.6	21°46'	300	279.6
35+38.7	898.7			
26+40	433.4	6°55'	300	297.8 1135.6
22+06.6	16957			
57+11.5	511.5			
0+00				



SOUTH BET. 1 X 2

START TO DESCEND

STA. 30 + 27.4 = 462'S

N

July = 18 = 14

CANYON

1200 ASCEND Hill
1200 REF. E. K. 10' WIDE ON V. EAST
BOTTOM OF CANYON 12400

DESCEND Hill

SEC COR 1-2-31-26
ASCEND Hill. FIR TIM.

TIMBER

FIR

HAINES - 7 17.14

VERA IN. DIS. HOR. D

STA

267592

247539

237505

217260

207027

19713

167185

137866

117821

107371

77150

47920

27620

17596

07112

0700

100.0 99.1 + 6.7

110.0 100.9 + 2.0

255.0 222.5 + 2.0

143.0 122.2 + 1.0

103.2 89.7

300.0 294.5

235.0 230.8 + 1.1

220.0 202.8 + 1.7

110.0 106.6 + 3.84

300.0 291.9 + 3.04

235.0 222.6 + 0.4

290.0 229.2 + 0.8

100.0 98.8 + 3.6

165.0 159.4 + 0.2

11.2
148.2

HAINES 7.18.14

VERA IN. DIS HORD

STA DIST

53+06.8

98.3

52+08.5

736.6

44+71.9

351.2

41+20.7

437.6

36+83.1

300.7

28+96.1

197.8

26+70.9

284.5

28+96.1

225.2

26+70.9

111.7

26+70.9

392.4+344.2

299.0+351.7

299.1+138.5

292.3+8.4

200.0

300.0

240.0

115.0

114.1-2.4

13053+404.2

300.0

300.0

300.0

200.0

300.0

240.0

115.0

114.1-2.4

13053+404.2

300.0

300.0

300.0

200.0

300.0

240.0

115.0

114.1-2.4

SOUTH FROM TOWNSHIP LINE TO 47
N.W. COR CL 39- 7-19-14

STA DIST VERA IN. DIS HORD

5711.3

231.9

2779.4

279.4

2799.6

0 + 0.0

299.6 800'

300.0 299.6

EAST FROM STA 299.6

STA 35138.7 ON TOWNSHIP LINE

SOUTH FROM N.W. COR SMITH 48 TRACT

STA. DIST. VER Δ IN. DIS. HORD

13+42.0	189.3	10°6	195.0	192.0 - 2.7
11+52.7	333.5	24°31'	360.0	327.6 ± 6.0
8+19.2	98.0	22°23'	105.0	97.1 ± 0.9
7+21.2	176.7			
5+44.5	140.5	7°8'	150.0	148.8 ± 3.3
3+99.0	249.8	17°39'	260.0	247.8 ± 2.0
1+49.2	147.2	11°51'	150.0	146.8 ± 0.4
0+02.0	322.7	21°26'	300.0	279.2 ± 9.2
0+00				

ASCEND HILL

July - 20.14

4+50 BOTTOM OF HILLSH. OAK. FIR

38+61.1 ON TOWNSHIP LINE. DESCEND

N.W. COR. SMITH FIRE TIMBER

EAST FROM A RAN N.W. COR SMITH 49th
 July, 20.14

STA DIST VER Δ IN. DIS H₀R.D

8+40.6
 6+19.6
 2+59.4
 0+0.0

226.0 20°10' 270.0 225.3+0.7
 360.2 2°24' 300.0 299.7+60.5
 254.4 23°21' 280.0 257.1-2.7

6755 - BOTTOM OF CANYON DRY CREEK
 5+20 RAIL FENCE
 SOUTH FROM NW COR. SMITH
 DESCEND - FIR TIMBER

SOUTH ON RAM. WEST BOU. CH. 39 50

July-21-14

STA
43+39.8

STA	DIST.	VER. Δ	IN. DIS.	HORIZ.
43+39.8	610.0	22°43'	240.0	221.4 - 3.2
43+39.8	218.2	12°56'	130.0	126.7
43+39.8	219.9	13°20'	300	291.9
43+39.8	509.8	9°36'	300	296.8 - 214
25+83.2	238.8			
23+94.4	81.0			
22+63.4	102.6	25°31'	115.0	103.8 - 1.2
21+60.8	114.8	37°41'	140.0	115.1 - 0.8
20+96.0	345.4	10°52'	355.8	349.4 - 4.0
17+00.6	290.3	3°26'	290.0	289.5 - 0.8
14+10.3	295.5	7°33'	300.0	297.1 - 1.9
11+14.8	234.0	11°47'	240.0	234.9 - 0.9
8+80.8	219.3	14°30'	225.0	217.8 + 1.5
6+61.5	434.2	7°59'	300.0	297.1 + 13.7
2+27.3	227.3	9°37'	230.0	226.8 + 0.5
0+0.0				

41700. ASCEND

~~BURN~~

DESCEND HILL

TOP OF HILL

BOTTOM OF CANYON. ASCEND
FIR TIMBER JULY 21. 14.

DESCEND HILL
STA. 8+90.6 ASCEND SCATTERING OAK-FIR

HAINES - 7-21-14

STA DIST. VERA IN. D HORD

67.7 + 20.9	163.4			
65.7 + 57.5	521.4	3018'	300.0	299.5'
60.1 + 36.1	150.5			
58.7 + 85.6	211.0	11029	2165.0	210.7 + 0.3
56.7 + 74.6	448.9	3044'	1500.0	149.7 - 0.8
55.7 + 25.7	680.5	12018'	300.0	293.1 + 387.4
48.7 + 45.2	369.7	5036'	300.0	298.6 + 71.1
44.7 + 75.5	42.1			
44.7 + 33.4	93.6	16520	95	91.6 + 2.0
4				

GRUB OAK
 DESCEND HILL
 TOP OF HILL
 BURN

EAST ON RAN. NORTH BARY. C. 1.90
 HAINE S-7-22-14-52

20465 BUCKHORN CREEK IS WIDE COV. N.
 3+50 BOTTOM OF HILL. PRAIRE
 13736 FENCE S-SIDE COV. ROAD

SOUTH ON RAN. W. BARY C. 1.39 -
 -0+00 DESCENDING CRAB OAK

STA. DIST. VERA IN. D. HORD

26704.7	686.2				
19718.5	585.3	8°30'	300.0	296.7	288.6
13733.2	938.2	14°40'	300.0	290.2	1648.0
3496.0	137.7	13°31'	140.0	136.1	+1.6
2757.3	257.9	9°56'	260.0	256.1	+1.2
29768.0	= 0+00				
25783.2	384.8	9°36'	300.0	295.8	+89.0

HAINES

7-22-14

N. ON.

HOR. D.

IN. D.

VER. Δ

DIST

STA.

WHERE W. LINE CHAPMAN
INT. Co. ROAD.

19420

19435.2

3702.7

0400

15.2

1632.5

302.7

26504.7 = 0400

EAST BUDY CL. 38 HAINES
7-22-14

DIST VERA IN DIS HORD

STA

INT WITH W. LINE CHARDMAN

POINTON & Co. ROAD

M.E. COR CL. 38
FROM TOWNSHIP COR TO M.E. COR CL. 38

15765.7

10+48.3

6+63.0

4+98.1

0+10.0

5+48.8

694.0 600.0 596.2 747.8

5-17.9 110' 17 130.0 421.7 198.7

110' 17' 300.0

385.0

164.9 179' 4 170.0 162.7 12.5

203.8 150' 3 210.0 202.8 1.0

294.3 110' 13 300.0 294.3

548.8 170' 45 182.5 173.8 137.5

EAST OF S. BDRY. 16-3 AND N. BDRY
 HAINES. 7-23-14 27-3

STA. DIST. VERA I.M.D. HORD

26+56.5	79.3	139.18	81.0	+0.5
25+77.2	258.6	12047	270.0	263.3-4.7
23+19.6	115.9	9037'	120.0	118.2-2.7
22+02.7	365.3	9058'	300.0	295.5+6.98
18+37.4	169.2			
16+68.2	176.7			
15+21.5	285.5			
12+36.0	152.6			
10+83.7	108.34			
0+00				

1/4 COR.

49.1 FROM STA 133.7 to C137
 SE 137.9

1794+140.0 - 133.4 + 1.4
 90 - 300.0 - 296.3 + 5.2
 SE, COR. C.L. 37 301.5

18187.4 = 34.5 SE

19199 FENCE
 10+00 TOP OF HILL
 9+25 ENTER PRUNE ORCHARD
 8+25 LEAVE PRAIRIE ASCEND
 3+63 FENCE WIRE
 37+00 CREEK 4' WIDE COURSE
 = TOWNSHIP COR. PRAIRIE

COUNTY ROAD 56
7-23-14 HAINES

~~264~~

Δ 6	172.0
Δ 5	2166.3
Δ 4	4446.3
Δ 3	2196.5
Δ 2	2175.0
Δ 1	7189.8
010.0	

EAST BORY HUNTLEY C.L. 56.
 July 28-14. 7-27 P.M.

Nachter Park

STA. DIST. VER. IN DIS. HORIZ

26761.1	473.9	10°48'	300.0	294.8	179.7
21787.2	44.2				
21793.0	233.4	20°16'	250.0	234.5	-1.1
19709.6	189.6	18°21'	200.0	189.8	-0.2

TOP OF RIDGE

W. SIDE WINCHESTER ST. 264
 E. SIDE WINCHESTER ST. 117
 = N.E. COR. C.L. 56

0+00

58

1359.8

S. Line

J. Hartley.

Sta Dist Vert. Exc. Dist

120.0 to Bank, N.E. Cor. Nachter.
 163 * Bank,
 N.W. Cor. Nachter. 55' 9" to bank
 13+16.6 Top of river bank
 7+30 N. side of draw
 7+00 Bottom of draw
 6+51.0 Top of Bank
 151.3 To S.W. Cor. Nachter. 25.6 Below
 78.0 S.E. Cor. Nachter - 25.6 Δ Gen. Road.
 6+11.0 Top of Sec. Bench
 8+00 Top of Bench 4+93.9
 First Bench 3+25.25
 Cor. Hospital N.E. Thru. river bed
 = 49+29.8 Rail. E. Barry. Ch. 56.

84.8

- 4.3

90.0

19' 38"

On W. Barry

12+18.2

339.4

8+78.8

878.8

Δ 1+461.4

80.5

Δ 13+76.6

376.6

11+00.0

449.0

Δ 6+51.0

159.0

492.0

Δ 11+90.2

279.9

9+10.3

262.7

6+47.60

249.3

3+98.30

258.95

1+39.85

139.35

0+10.0

STA

DIST. VERA

IN. D HORD

6776.4

28782.0

27771.3

26749.6

25784.6

23775.6

22709.9

20738.0

17706.8

15700.2

0700

676.4

60.7

121.7

65.0

209.0

166.2

171.4

331.2

206.6

1500.2

62.0

1/4 COR

120.39'

60.5702

170.0

170.0

3° 21'

169.7 + 1.7

210.0

209.2

2.6

289.4 + 1210.8

MONTH FROM. SEC. COR - 19-24 - 25-30 61

AUG. 13-14 SUNSHINE RANCH - 8-13-14

O.R.P. 8" W. DAK

O.R.P. 6" W. DAK

50.4
1/4 COR 19x27

OBT 30" B. OAK

20738 S. SIDE CANYON 20783 S. SIDE OAK C. P. EFFR
21720 W. "

19760 CROSS RAIL FENCE WIRE FENCE 20760
ENTER CURB OAK BENCH

300 ROLLING PRAIRIE

WIRE FENCE 28,300 FOOT DE HILL

SEC. COR - 19-24-25-30 DESCENDING HILL - GRASS

RIVER TRAVERSE PLAT-G 62

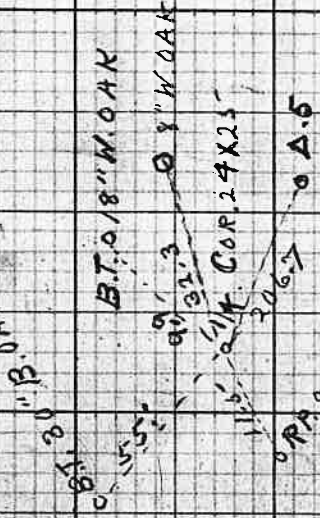
SUNSHINE RANCH
AUG. 15-17
16

DIST. VERA IN DIS. HARD

Δ 7 227.9
 Δ 6 225.9
 Δ 5 360.8
 Δ 4 368.6
 Δ 3 432.5
 Δ 2-2398.6
 5+07.7
 12+14.5
 Δ 1 1214.5
 0+00 231.1

TOP BANK 8' LOW BANK 28' Δ 7 + 79' E.B. FERN CR
 Δ 7 + 90 W.B. " " " "

TOP BANK 11' LOW BANK 10' N



B.T. 0' 18" W OAK

0' 18" W OAK

0' 18" W OAK

0' 18" W OAK

TOP BANK 40' LOW BANK 70' IV

TOP BANK 44' LOW BANK 74' N

TOP BANK 33' LOW 60 N

TOP BANK 26' LOW BANK 90' N

TOP OF BANK 73' LOW BANK 85' N

TOP BANK 20' LOW BANK 45' N

AT 575' W BANK OAK CREEK

AT 525' E BANK OAK CREEK

151' BENCH T.B. 18' L.B. 29' NORTH

= 277 + 71.3 HANDOUT LINE SET. 26 X 24

OAK AND FIR TIMBER

PIVER TRAVERSE.

SUNSHINE RANCH 816 X 17-14

693

VA 27° 52' FOR 79' = 62.8

M.E. COR. LOT 3

698

M.C. PLAT. 8
NW COR. LOTS PLAT. 8

TOP BANK 5' RIVER TO

TOP BANK 4' LOW BANK 50' RIVER 80'

ALL + 362.4 = IN. HUB.

ALL + 40.5 BANK OF CREEK 7.60 W BANK + 80 RIVER
CENTER OF FERRIS ROAD. ALL + 40.29
CREEK W BANK ALL + 35.4 E BANK ALL + 37.1 W 8 IN
80 FEET FROM IN. HUB. 147.5' N. RIVER 100'

ALL + 180 W SIDE OF DRAIN
+ 122 BOTTOM OF SLOPE ALL + 97.5 CEN. OF DRAIN.

TOP OF BANK 30' LOW BANK 80 NORTH

TOP OF BANK 20' LOW BANK 70
CANYON. ALL + 2 TO E SIDE 89 + 38.5' W. SIDE

TOP OF BLUFF 40' LOW 70 NORTH

12' TO TOP OF BLUFF PER TO RIVER 60' N.

LINE S. 0. E. 2810. IN
CANYON H. GOU S. 0. E.

VERA IN DIS. HARD

DIST.

Δ 11 + IN. H. 352.4

Δ 15

Δ 14

Δ 13

Δ 12

IN. H

IN. H 352.4

IN. H

Δ 11

Δ 10

Δ 9

Δ 8

407.9

357.5

479.5

3060

382.7

40° 27' 150

147.5 + 260
IN. H 134.2

300.

298.9 + 83.8

SCATTERING CAR TIM.

TRAVERS RIGHT BANK FERRY CREEK
8.16-14

Δ 2

96.2

Δ 1.

183.7

0700

BANKS' WIDTH 8'

BENCH ON RIGHT 25' WIDE. BLUFF LEFT
BANK 6' WIDTH 10'
= Δ 7 RIVER TRAVERSE

TRAVERSE. FERRY ROAD 65
8-16-14
SUNSHINE RANCH

DIST. VERA IN. DIS HORD

Δ.3

113.0

Δ.2

177.5

Δ.1

25.9

0700

SOUTH 9079 RIV. TRAM. 90'S BANK OF
CREEK + 60 N. BANK OF CREEK 80' RIVER
CO. U. OF CREEK W

LINE BET. N. E. COR LOT 2 PLATA 66
AND 1/4 COR 26 X 30
SUNSHINE RANCH 8-17-14

STA. DIST. VERA IN DIS. HORD

1/4 COR. BET 25 X 30 FOOT OF HILL

TOP OF HILL OPEN START TO DESCEND
= N.E. COR LOT 2 PLATA 66
ASCEND HILL OPEN

9733.0	392.7	802'	300.0	297.1	+95.6
5740.3	121.8	3°16'	122.0	121.8	
4718.5	22.0				
396.5			20°56'	424.5	396.5
0700					

NORTH BET. 25X30

SUNSHINE RANCH 8-17-18-14

STA. DIST. VERA IN. DIS. HORD

12+55 TO 23+00 SCATTERING OAK TIM.

23+50 DESCEND TO SEC. COR 19-29-28-30
 23+50 TOP OF HILL LEAVE TIM. 0 FENCE TO SEC. COR

22+80 BOTTOM OF DRAW START TO ASCEND
 START TO DESCEND 21+00
 TOP OF HILL 21+00

START TO ASCEND 17+77
 BOTTOM OF CANYON 2 CORNWEST

TOP OF HILL START TO DESCEND

CANYON N. 60° W

12+53 BOTTOM OF CANYON START TO
 ASCEND. LEAVE HEAVY TIM. ENTER
 SCATTERING

7+00 ENTER OAK AND FIR TIM.

FENCE 3' EAST START TO DESCEND

TOP OF HILL - OPEN.

3+00 CROSS FENCE
 OPEN. FENCE 2' WEST

1+14 COR. BET. 25X30 ASCEND HILL
 OAK TIM.

26+46.0	- SE 54.3					
25+91.7		21° 48'	77.0	71.5 + 0.7		
23+21.0		6° 34'	300.0	298.0 + 53.4		
21+69.6		10° 8'	175.0	172.3 + 188.7		
15+47.3		23° 33'	285.0	261.3		
11+43.7		14° 39'	155.0	150.0 + 75.3		
8+98.6		9° 14'	211.0	208.3		
7+36.8		11° 35'	250.0	244.9 + 0.2		
6+36.4		24° 10'	180.0	164.2 - 2.4		
5+52.9		21° 32'	111.0	103.2 - 2.8		
4+63.8		83.5				
2+93.1		89.1				
0+0.0		170.7	180.0	171.2 - 10.5		
		293.1	300.0	280.2		
		20° 57'				

TRAVERSE CENTER LYME 68
 SUNSHINE RIVER ROAD
 RIVER PANCH 8-19-14

2378.6

STA. DIST. VER. IN. D. HOR. D.

Δ 8	630.6			= IN. RIV. TRAK. Δ 1 + 23743.6
Δ 7	919.5			= Δ 7 + 630.6 TO IN. HUBSON RIV. TRAK
Δ 6	806.3			Δ 6 + 700 LEAVE TIM. OPEN TO Δ 7
Δ 5	583.3			Δ 6 TO 1/4 COR. BEY. 23726 - 89.6 WEST
Δ 4	479.1			FLAT FROM Δ 5 + 159 TO
Δ 3	511.5			Δ 4 + 50 START TO ASCEND Δ 5 + 159 TO (F. HILL)
Δ 2	423.6			Δ 4 + 50 EAST BANK. FERN CREEK COR. NORTH
Δ 1	459.7			Δ 4 + 360 FLAT 360.8 START TO DESCEND 100%
0700				FLAT - OPEN
				Δ 2 + 250 ASCEND TO Δ 3. 7%
				Δ 2 + 50 TOP OF HILL 200' B. BOTTOM OF DRAW 100'
				DESCEND Δ 1 + 230 BOTTOM OF CANYON CORNERS
				Δ 1 + 205 COR. OF PRO. FERRY ROAD
				ASCENDS 5% SCAT. OAK TIM.
				S. E. COR. LOT 3 PLAT B GEN. ROAD

189.7

ENTER DAK. FIR. TIM. LEAVE Δ 6 + 700

0 + 00 700
 SCAT. OAK
 TIMBER

69.

SUTHERLIN. CEMTRY. 8.20-19

STA DIST

1+0.0

2+21.0

7+48.0

0+0.0

FROM S.E. COR. OLD CEM. TO PIPE SE COR. NEW

FROM RE COR TO S.E. COR. OF OLD CEM.

FROM PIPE IN ROAD TO NE COR. OLD CEM.
PIPE ME. 1.250 OF COR. 63 N.

2 CEN. ROAD BET. LOTS 19 PL. 120 93 TO PIPE
CEM. ROAD.

70

SUTHERLIN CEM. ROAD. 8-20-19

STA. DIST.

134.8

Δ 1

0+0.0

N.W. COR. LOT 8. B.L.I. PLAT. I

71

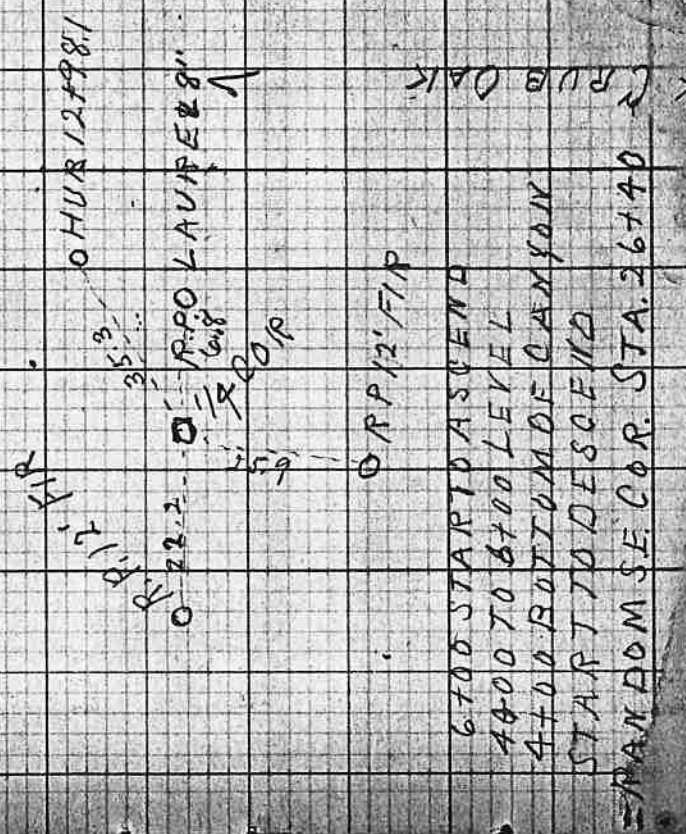
4406'E " BARK CREEK CO. N

0705

TAYLOR RANCH 10.27.14 75
 TO 1/4 COR. BET 29 & 32
 RANDOM LINE SOUTH FROM P.A.M.S. COR

STA. DIST. VERA IN. D. HORD

12+98.1	175.6	31°29'	210	179.2	-3.6
11+22.5	126				+126
9+32.8	189.7	21°31'	70	65.1	-0.4
7+89.2	143.6	11°54'	175	141.9	+1.7
	401.7	8°40'	211	208.6	+193.1
	387.5	16°55'	105		> 387.5
		16°55'	300		
0+00					



RANDOM LINE NORTH FROM RANDOM
SE. COR TAYLOR. 10.27.14

79

STA. DIST. VER. IN. D. HOR. D.

28+83.8	152.8	180° 9'	160	152.0 + 0.8	
	164.8	170° 40'	173	164.8	
25+66.2	278.7				FENCE 120' WEST. OAK FIR CEDAR TIM.
23+17.5	170.7	90° 21'	173.0	170.7	2500 START TO ASCEND
21+46.8	123.6	130	130	126.7 - 3.1	2325' FOOT OF HILL 12328' TO 2500 LEVEL
18+08.8	169.4	14° 44'	170	169.4	FENCE 92' WEST
17+55.3	109	15° 10'	110	106.2 - 2.7	
15+77.4	177.9	110	180	176.7 + 1.2	FENCE 80' WEST
13+87.6	189.8	26° 08'	210	188.5 + 1.3	FENCE 48' WEST. FIR AND CEDAR TIM A
	84.8	23° 50'	95	86.9 - 2.0	FENCE 50' WEST
	275-	23° 33'	300	275.0	FIR
10+27.7	93.9	22° 30'	102	99.2 - 3	FENCE 20' WEST. 940' ENTER FIR BEECH TIM
	56.5	19° 37'	60	56.5	
8+77.5	185.2	80° 7'	180	178.2 7.0	8740
6+92.1	136.7				FENCE 10' WEST START TO DESCEND
5+55.7	420.1	50° 51'	300	298.4 + 121.7	6700 TOP OF HILL START TO DESCEND
1+35.3	135.3	10° 10'	140	- 2.5	3735 CROSS HYS FENCE
0+00					FENCE 6' EAST

RUB OAK. 2
10+00 TO 9150

ASCEND HILL
RANDOM S.E. COR. TAYLOR HUB. 26+90

STA.	DIST	VER Δ	IN. DIS	HORIZ	DESCRIPTION
68796.5	750.2	5°10'	300	298.8	68796.0' FENCE 2' EAST CROSS FENCE 67770 CREEK 66775 SBANK 66400 N. BANK COVE
60796.3	265.2	10°20'	270	265.6	FENCE 20" WEST ENTER LEVEL LAND
58731.1	470.6	6°10'	300	298.37	FENCE 32" WEST
53760.5	504.5	6°45'	205	203.6	53760 FENCE 95" WEST 58760.5' START TO DESCEND
47756.0	247.2	7°5'	250	248.1	53760.5' TOP SMALL RIDGE 47760 START TO ASCEND 47760 CREEK 8" WIDE COU. EAST
45709.8	226.3	7°40'	230	228.0	R. LAUREL 47725 FOOT OF HILL ENTER FLAT
39775.5	307.0	28°43'	270	236.8	FENCES 61" W. 18.3 19 COP 47760 OAK POST
38728.2	197.3	23°40'	160	146.5	0 STA 58728.2
36798.1	130.1	17°16'	130	126.0	
35739.6	163.6	3°16'	165	169.7	
34711.0	123.5	16°24'	130	129.7	
32757	159	15°	160	159.5	FENCE 120" WEST
30767.4	189.6	29°36'	175	152.2	
29783.5	83.9	11°32'	85	83.3	TOP OF HILL START TO DESCEND
	99.7				

32757 NPV B OAK AND LAUREL TO 39755
FROM 35775.5 TO NPV B OAK

STA. DIST. VERA IN. DIS. HOR. D.

3/4 COR BET. 17X20

93775.6

388.9

~~300~~

89786.7

337.06°

300

298.3+38.7

86749.7

1180.9

74768.8

2°10'

299.2+48.5

77780 SOUTH BANK N. UMPIQUA RIVER

71721.1

274.6

FENCE 6' EAST

STA. ABEENE 11-18.14
DIST. VERA I.N.D. HORD

4 INE NORTH FROM 1/4 COR 77
BET. 2 X 11 7.25-4

Abene

Continued on next page:

19461.3	508.3	9012'	530	523.2-19.9
19463.0	48.2	See	transit book	
194733.8	792.3	12081	300	292.9+499.1
6761.5	129.			
5732.5	532.5	18050	240.	233.0+289.6
0700				

= INT. Q.L. S.C. BXEPP AT 545+69.9

= 1/4 BET 2-11

ABSENE. 11-19-20-17

STA	DIST	VEPA	IND	HORD
53+93.1	10'42"	88	86.5	
53+06.6	57.9			
52+48.7	316.9	21°50'	300	278.5 + 387
49+31.8	204.7			
47+27.1	323.7	13°	300	292.3 + 31.4
44+03.4	199.9			
42+03.5	284.9	200	300	281.9 + 30
39+18.6	88.1	10°26'	90	88.5 - 2.4
38+33.5	106.6			
37+27.9	216.5	14°52'	225	217.5 - 1.0
36+11.4	115.6	8°25'	115	113.7 + 1.9
33+95.8	284	18°18'	300	284.8 - 0.8
31+11.8	578.9	5°49'	220	218.9 + 300
25+92.9	261			
23+31.9	370.6			
19+61.3				

LIME NORTH FROM 1/4 COR 78
BET. 2-11 7.2654

C.S. 1/4 COR BET 33X2 BK POLE

42+89 ENEK 3" WIDE COU. E
C.S. STAKE 66.5 WEST OF STA 42+03.5

26725 CROSS WIRE FENCE N E X SW
28704 EXW. WIRE FENCE N SIDE COUNTY ROAD
28492.9 IN. COUNTY ROAD
20X90 CAL RIVER NORTHBANK CO. West
24760 CAL. RIVER SOUTH BANK
23770 EXW RAIL FENCE

Intersection of S.C.B.F. & 79
+ Hunt - Vogel line

11-21-14

1/4 C.D.A. BET. SECS. 31 & 6

Sta 691150 P.O.C. ϕ

INT. RR X LIME BET. = 690+16
HUNT X VOGEL

STA. DIST VERD INCL HORZ

11-21-14

62.5-
95.4
3738.75
4730.7
500.3
1433.4
0100

62.5

95.4

~~478~~

52

300

190

3000

180.33

23° 33'

16° 25'

10° 56'

10° 20'

948

47.8

287.8

1325

298.0

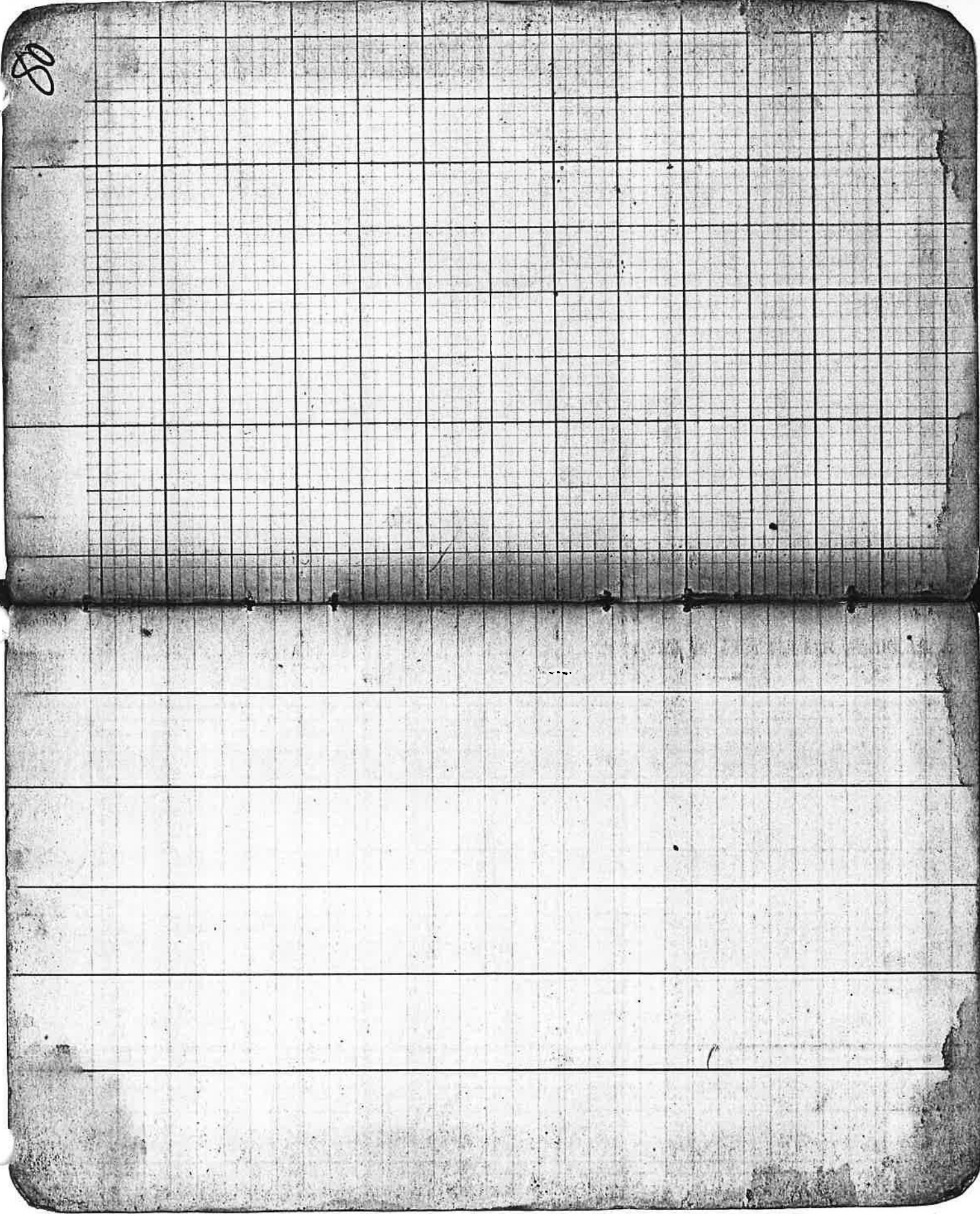
500.3

133.4

3.2

1.37

80



Feb 12" N E 57-4

13.0 A 1630" W. 669.9.

14. " 15" S. 70 E 1907

15. " 9' S 210 W 129.9.

49.26
18.54

177.6

45.0

154.2

128

174

185

5.3

21.6

574.6

297.1

149.3

446.8

172.3

16.0

332.3

289.8

179

111

145.1

6613.4

141.5

1827.5

271.1

283.8

8