

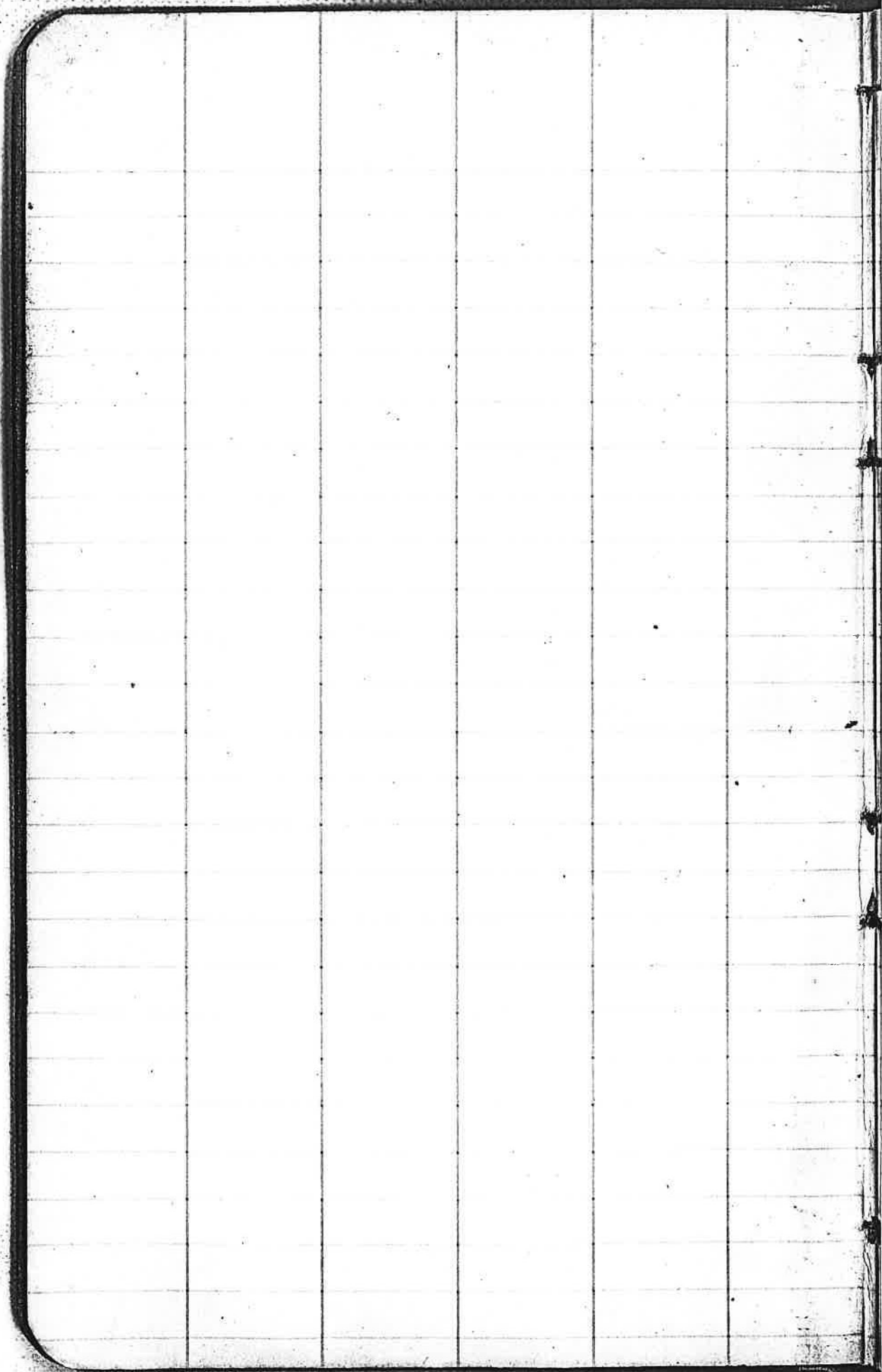
Field Book # 37

DOUGLAS COUNTY

1914-1915

No. 18

FB 37



from Sec Cor E 10.00 stake in creek
22.27 " " road

4885

①

T. 28 S. R. 7. W. Sec. 35

Survey for R.F. Huntley

Begin at corner to secs. 26, 27, 34 & 35
Find trees in place and renew corner
by oak post.

Run South Var 20' 30" E

39.67 Intersect 1/4 line 44 1/3 E of 1/4 Cor

Check and find trees black oak N. 0° E. 201. Ms marks visible
also Black Oak stump N. 10° E. 200, badly decayed inside
a scar shows on inside indicating old blightish.

Renew corner with post

Northern random through 35'

40.00 set temp stake

marked 1/5. G.S.

Set stakes every 5 chs.

Chain (F.L. Cole Dec 14, 1915)

R.F. Huntley

50.00

50.00

0001

(Rain)

Dec 13th 1915

Chain (Earl Ollivant
(Eugene)

② Reston, Jan 18th 1915
 Survey for Chas Wilson. To cut off
 West half of Wm Weckley D.C. No 41

T. 20 S. R. 8 W. Sec. 15.

Begin at N.W. cor Cl 40. Find Brng tree
 set stake for cor N 70° E 167 1/2.

Ran South random

13.50 set temp stake and find stump
 of Fir witness tree No marks visible

S.A. Gurney says he has seen the correct
 marks and is sure this is the correct
 tree. Set at tree and set stake for

corner S. 45° E 13 1/2.

Set Fir stake at cor and mark

A.W. Fir N 65° E 8 1/2.

Check in random from N.W. cor Cl 40
 and find random 13.23 intersects

Find 16 1/2 East of corner

Thence West random

6.71 intersect claim line 15 1/2

North of corner. Find tree in place
 and set new cor with Fir post

Marked C. 41 & C.S.

North on random

38.65 intersect claim line 19 1/2

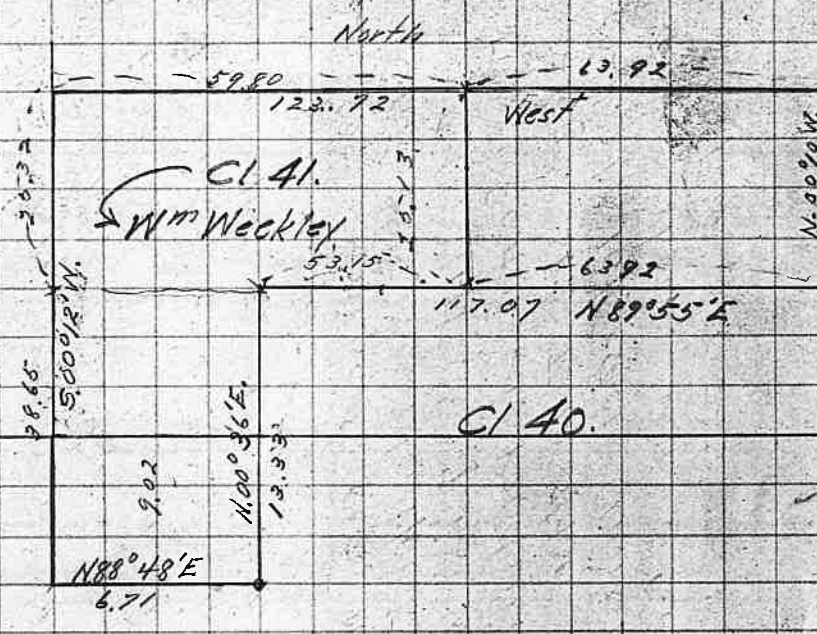
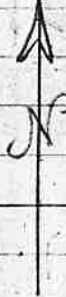
West of corner

Back to 18.

Roll

13.50
 13.33
 2.17

Chain S.A. Gurney
 J.W.



N. 00° 0' W
 20.00

10.50
 10.33
 2.17

38.65
 13.33
 24.94
 2.17

0002

92.9428

North

West

South

CI 41.
 Wm Weckley

CI 40.

N 88° 48' E
 6.71

N 100° 36' E
 13.33

N 89° 55' E
 117.07

38.65 intersect claim line 19 1/2
 West of corner

③

Continue for Chas Wilson
Jan 19th
(1915) J.M.C.

at call on Nedry set temp stable 0003

Find B.T. dead Original marks
visible, Renew corner with Fir post
marked C.H. & C.S. Mark A

A. Fir 12 in dia S. 79° 45' E 68 MS,

Thence Run East on random

60.00 set from stable

123.72 intersect Chain line 16 MS
124.72 North of Chain Cor.

Find an ash stump which seems
to be the only possible tree
to answer the description, altho the
original markings are rotted and
gone. Renew cor. with dry
Oak Post and Mark

Q Willow 7 in S 78° W. 114 MS
Run South on random

25.00 Set temp stable.

24.94 Intersect Chain line 4 MS
West of corner. See next

Page for setting corner

Night no Evidence for Cor

⑤ Continue for Chas Wilson

Return to stake set at 60.00 and
set stake for subdivision at 59.80
8 1/2 Ks south on true line

On East line set stake for subdivision
at 53.15 set 6 1/2 Ks south on true
line MARK

An alder 12 in North 27 1/2 Ks.

Bill to Bushnell's

2 days @ \$5.00 10.00

stage fare ~~1.00~~

11.00

Credit E.L. Bushnell 6.00

Bal 5.00

To A.E. Bushnell

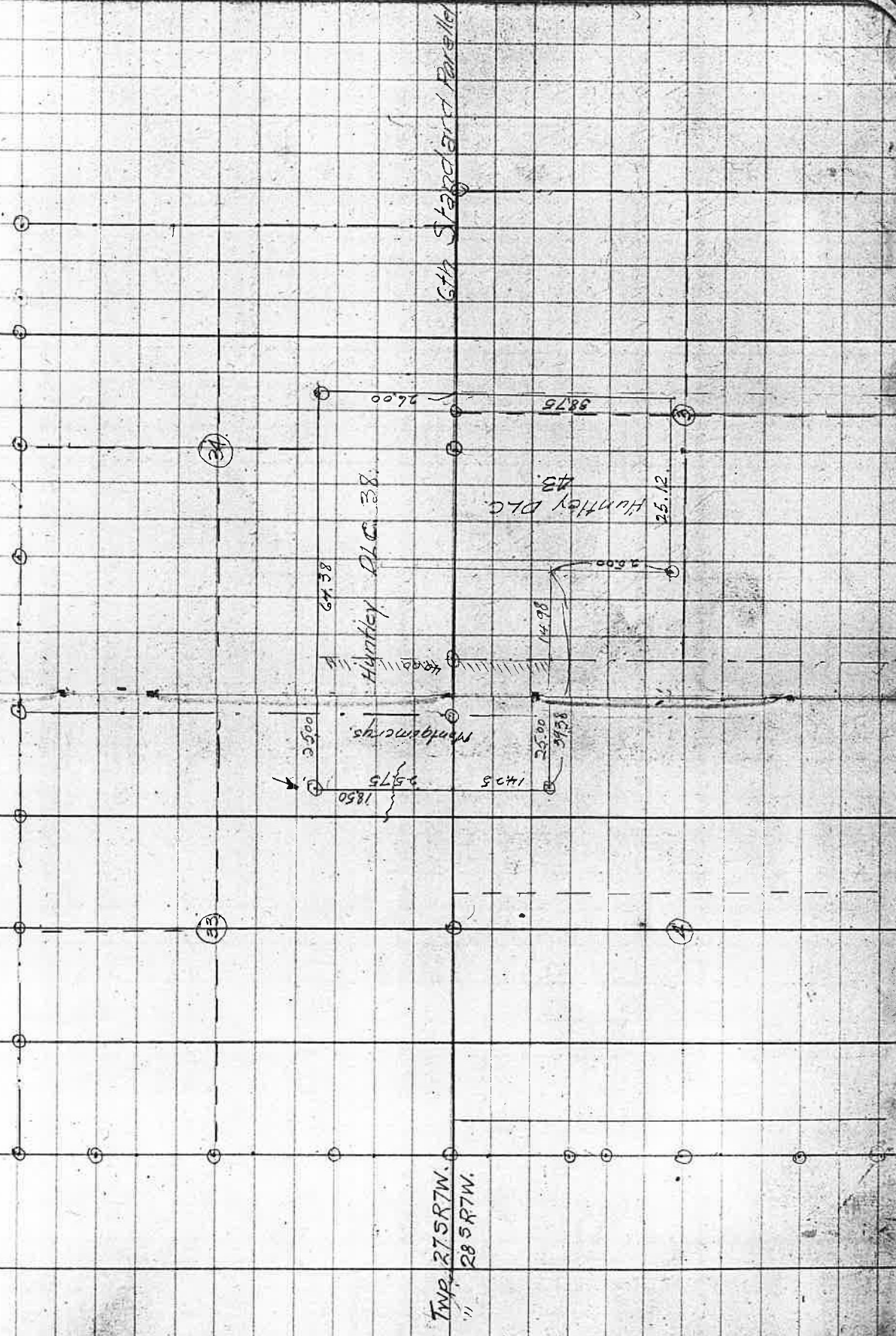
0005

6

Sketch Showing Location of Huntley
DLC. road Part owned by Montgomery.

Mar. 26. 1914 0006

F. J. Cole
J. W. Cole



Jan 2/21 1915

Chain SA Gurney
(W. Gurney)

N 89° 31' E

R. & W.

7. Survey for E. L. Bushnell SEG 24 T28.5
Subdivision of South bdy' of Sec 24.

Begin at corner of Secs 23, 24, 25 & 26.

Find corner previously set. Check
witness trees. All are in place corner sets
correct.

East on random compass line.

2.00 Ferris' stake

6.00 "

40.17 Intersect corner 34 1/2 South of 1/4 corner

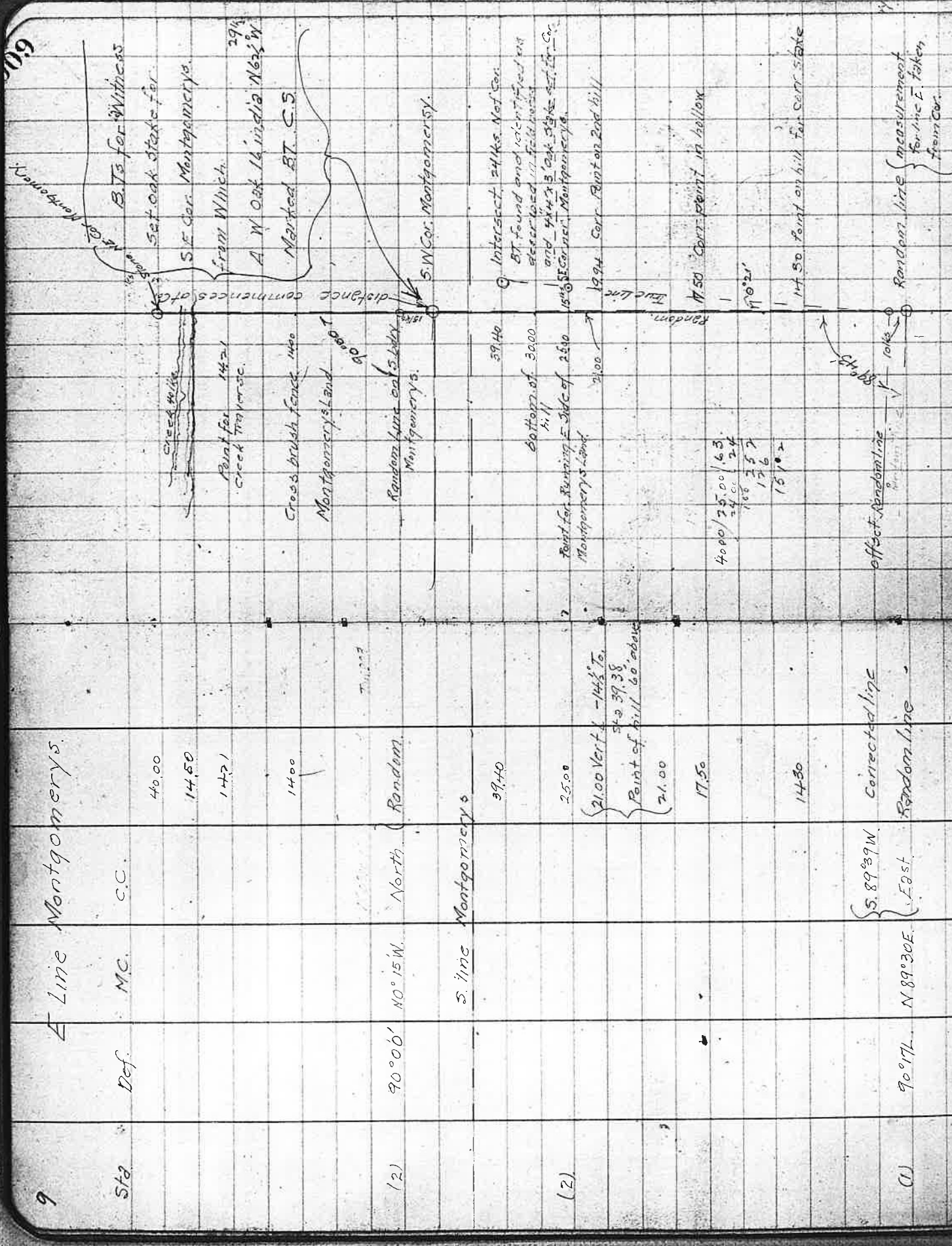
Corner previously set. Check and
find Bearing trees in place. Corner
sets correct

Return to 1/16 corner and set post
at 20.08 1/2 and 17 1/2 North on true
line Mark

A.W.O. 12 S. 16° 45' E. 46 Ms.

set on 1/16 corner and run line
North to County road.

E. L. and A. E. Bushnell agree to this as
a satisfactory line as their dividing
line E. L. Bushnell
A. E. Bushnell



9

A Line Montgomerys

Sta Def MC. C.C.

40.00

14.50

14.71

14.00

(2) $90^{\circ}00'$ North

S Line Montgomerys

39.40

25.00

21.00 Vert. $-14 1/2$ To

Sta 39.38

Point of hill 60' above

21.00

17.50

4000 / 25.00 = 160
24.00 / 24 = 100
160 + 100 = 260
260 / 15 = 17.33

Corrected line

S. $89^{\circ}39'W$

N. $89^{\circ}30'E$

(1)

Random Line

effect Random line

100' 88'

Random line

measurement for line E. taken from Cor.

N. Line of Huntley D.L.C.

1 Commence at N.W. Cor. of Huntley's D.L.C. No 38
East on Random Line

25.00 Set state for N.E. Cor. Montgomerys.

offset 5 kts. N.

64.98 Intersect. 38' N of State which is probably:

38-5 = 33' 1/4 of Cor.

Witness Stake.

Correct bearing to S. 89° 43' E.

Solar obs

Mr. Geo. Marsh says stake was witness stake
to N.E. Cor of D.L.C. No 38 and was placed 20'

121 43 11' etc

- 18° - 24' - 12.9

+ 6 - 29.0

3887

E of Corner Stake was marked 38 C.S. on N

side and Sec 34 on W side.

Set post 6 1/2" x 1 1/2" marked with cross in place
of stake and place stake beside stone.

18° - 17' - 43.9

2 - 11 Refraction

18° - 15' - 32.9"

Correct stake at 25 chs

2 minutes

Assumed bearing of W. line of Claim Trac. N. within

25.116 Set Stone 12" x 6 1/2" for N.E. Cor. Montgomerys
from which

511950 E 98 1/4 S
A. B. Oak 10" in dia 5 1/2" x 1 1/2"
N 35 1/2° E 3 1/2 kts.
" " " 5 " " N 16° E 27 1/2 kts.

64.38 25.000 131
19.374
5.586

64.38

500000 4.66 x 25 chms 116
25752

12.25
25.00
3.8628
3.7520

31 x 33 = 10145 = Corr for
Random line
of NE Cor

64.98 330000 5 = 72417'
32490

Jan 28. 1915

U.W. Cole notes
F.J. Gale
L.C. Williams
U.G. Moore
R.B. Montgomery

arly change

Jan. 28 - 1915

Solar obs

121 43 11' etc

- 18° - 24' - 12.9

+ 6 - 29.0

3887

18° - 17' - 43.9

2 - 11 Refraction

18° - 15' - 32.9"

Assumed bearing of W. line of Claim Trac. N. within

2 minutes

Correct stake at 25 chs

Set Stone 12" x 6 1/2" for N.E. Cor. Montgomerys

from which

511950 E 98 1/4 S

A. B. Oak 10" in dia 5 1/2" x 1 1/2"

N 35 1/2° E 3 1/2 kts.

" " " 5 " " N 16° E 27 1/2 kts.

64.38 25.000 131

19.374

5.586

64.38

500000 4.66 x 25 chms 116

25752

12.25

25.00

3.8628

3.7520

31 x 33 = 10145 = Corr for

Random line

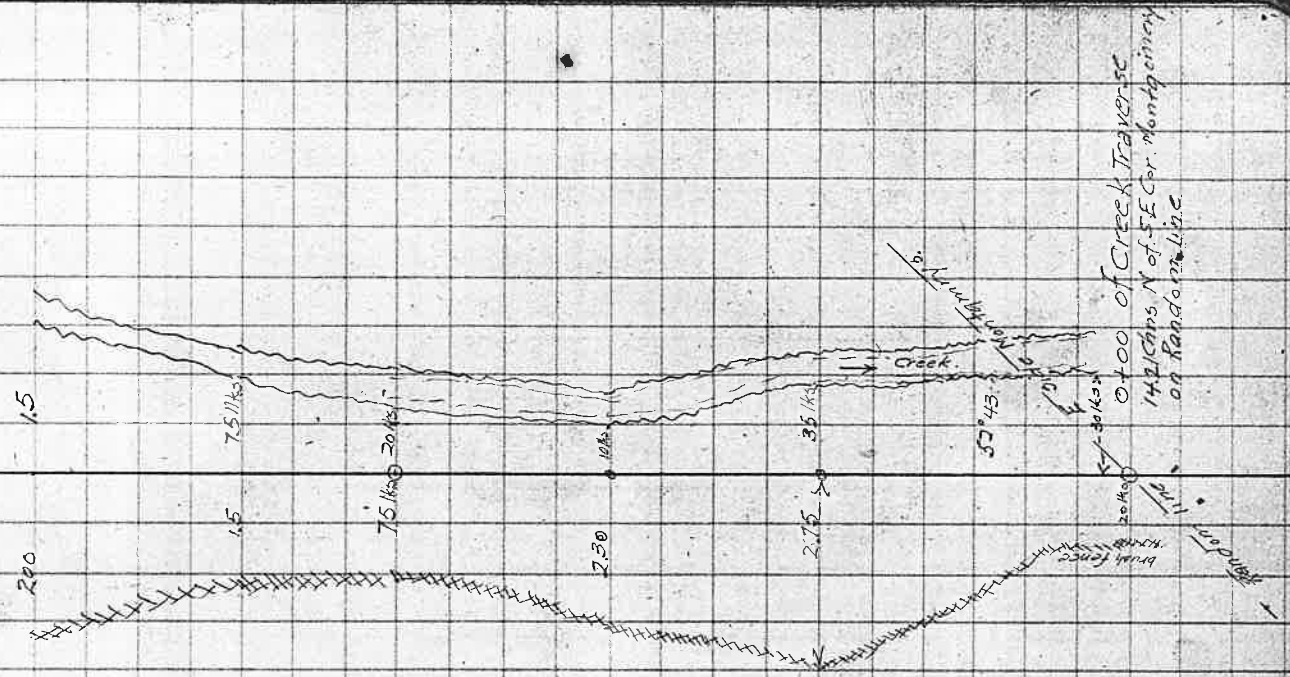
of NE Cor

64.98 330000 5 = 72417'

32490

11 Traverse of Flermy Creek.

Sta Chns.	Def.	M.C.	C.C.	dist.	Point No.
1475	5° 05' R.	N 58° 20' W	N 57° 56' W	Y 2.00	
1192	52° 46' R.	N 63° 40' W	N 63° 20' W	Y 2.83	
832	7° 48' L.	S 63° 45' W	S 64° 19' W	Y 3.60	
575	55° 10' L.	S 71° 45' W	S 75° 07' W	Y 2.57	
0+00	52° 43' L.	N 53° W	N 52° 43' W	Y 6.75 + 5.15 - corr to 5.80 true line	



28

29

30

34

3

Len. 12.5' 20'

43° 26'

TWP 24 S R 5 W

25" " " "



16.

Survey for Ludwig & Manning
72 24 S & 5 W.

Commence at the 1/4 Cor bet Sec 5
and 32

N 89° 45' W on Sbdy of Sec 32 on Random
line Var. 22° 07' E

99.00 set stake and search for Cor
find stump of Laurel decayed but
can identify wood

Set up at Laurel and set stake
N 42° 1/2 E 47 lks. 23 called for in field notes
I find stumps of Ashes called for
in field notes approximately in position
called for. Also and Oak 10" in dia bra
5 12 1/2 E 39 lks instead of 10 lks in field
notes. stake 4" x 4" x 3'

40.14 intersect 12 lks S of stake set
from trees.

589° 35' E on true line

20.07 set stake for 1/4 Cor

40.14 1/4 Cor per Act Secs 5-32

0016

March 10 1915

U. N. Co/c. 10.5
" " " Chain
Solar Obs. 10.00 AM
Will Manning

Lat 43° 36' Long 123° 30'

app Dec. Greenwich Apparent noon - 4° 24' 52.9"

change for 1 hr + 58.68 x 6 = 352.08 = + 5' 53"

- 4° 19' 00.9"

Ref + 1' 08"

- 4° 17' 53"

equation of time 10m. 39s.

Standard time of obs 10' 23 AM.

get sheet on hour circle

Survey for C.M. Burnell
T. 28 S. R. 6 W

Begin by trying to locate the S.W. Cor
of Claim 49. as nothing is in
evidence. I begin by finding original
tree at S.E. Cor. Tree has been chopped
and old wood decayed. R. is very plain
no other marks visible / Remark same
tree.

1 set of tree and run S 20 W 325 115.

Set Burt Solar and run West. random

19.42 Intersect line bet Claims 51803

18 115 North of Claim Corner.

Witness tree still standing.

20.62 Offset 219 115 North across Looking

Glass Creek

39.35 set south 29 1/2 115 on line

44.42 Hub on Creek bank

45; long chain across creek

62.23 P on E side of Slough

70.00 Stake W "

79.47 Transit pt

99.51 To stake Near Corner of C57

99.68 Intersect a Point 59 115 south

of rock set by Roberts

April 5th 1915

Chain of G.F. Andrew
(O.A. Parker)

Ref 2 hr 50"

3. 1'02"

1/4 change 57.13"

Eg time to be added 3'1"

Lat 43° 7'

Solar setting

4 AM. Dec

+ 59 46' 42"

+ 5 43.8

10 AM 5° 51' 47.1 + 56" = 5° 52' 37.1"

80.00 79.60

19.96 19.96

99.96 99.96

68 99.68

45 19.96

97 99.96

20 20

~~ROC 1000~~

Point in County Road

29.67

99.47

20

Cor 41

Continue for Burnell

~~Find no trees~~

~~I B. Nichols says that C.F. Roberts placed this rock where he found a very old stake. as the marks of a very old fence cornered. I accept this ~~and~~ rock as corner, and mark~~

~~A.B.O. 12 in N 23° W 140 lks~~

~~" " " 9 " N 50³/₄° E 324 "~~

~~S. 89° 46' E on true line~~

~~20.01 set S.W. Cor of G. 49 and mark~~

~~N. A.B.O. 28 in S. 68¹/₂° W. 38 lks.~~

~~A.B.O. 36 " S. 50° E 162 "~~

~~set a river bolder 7x7x10"~~

~~1 ft under ground.~~

~~56.55 set S.W. cor of G. Burnells. 1 acre tract~~

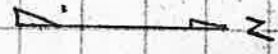
~~turn 73° 25' left from transite line~~

~~making D.L.C. line as East~~

~~39.40 set S.E. Cor to Burnells 1 acre.~~

	140		99.68	14.42	20.01
			36.54	43.13	36.54
36.54	99.68		43.13	1.29	56.55
20.01	56.55				43.13
<u>56.55</u>	43.13				99.68
			99.68		
			46.86		
43.13	43.13		52.82		
3.73	3.73				
<u>46.86</u>	39.40				
					99.68
					<u>56.55</u>
					43.13

20'
16 15
 16 35



47 ~~ft~~ North of transite line

19.46 → N.W. Cor
 P.L.C. 52.

S.E. Cor
 D.L.C. No 49

19.

~~South 2527ing distance remaining in
10.27 County road after deducting
length of Freys land from
distance given in County road from
junction of roads to Burnell's corner~~

019

88
36
638

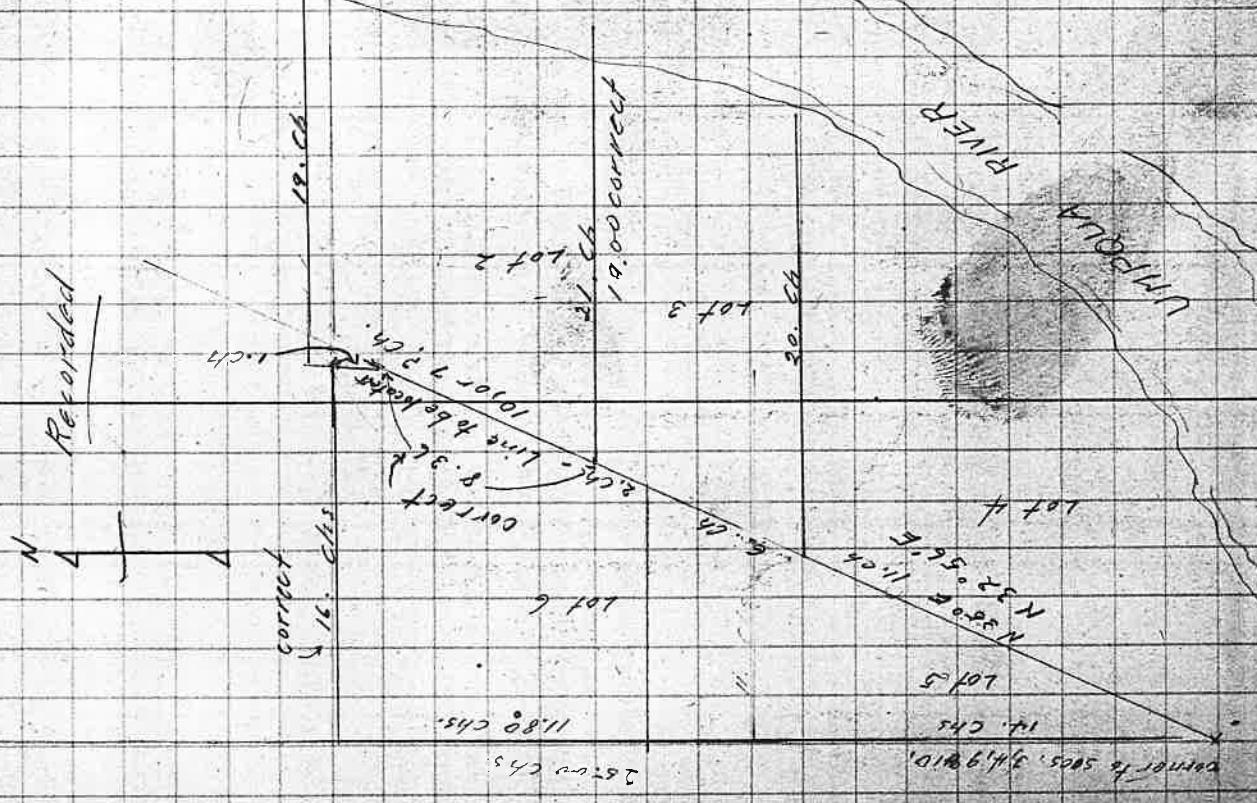
April 7, 1915

10 Survey for G.W. Burt
for description of road to be deduced to

A.L. Deross. Solar setting on next page
Begin by chaining from post set for cor. to
secs 3, 4, 9 & 10. North along fence on Sec.
line

- 14.00 set temp stake
- 27.50 fence set for line between Burt
& Moore
- 39.24 Post at End of Fence.
- 39.70 Point coven with fence line if fence
continued straight
- 40.00 Point in center of old road

Recorded
at
10.13



Solar settings for April 7, 1915

Lat	43° 9'
4-AM	6° 31' 24.3"
2-P.M.	6° 41' 35.1"
3-P.M.	6° 41' 36.6"
4-P.M.	6° 42' 53.17"

April 8th 1915 Lat 43° 09'

4-AM	6° 54' 41.6"
9-AM	6° 59' 56.33"
10-AM	6° 59' 56.33"
11-AM	6° 60' 42.86"

April 9 th	Lat 43° 9'
4-AM	7° 16' 38"
3-P.M.	7° 26' 38"

$$\begin{array}{r} 42.86 \\ 23 \\ \hline 7.8 \end{array}$$

60'	$\begin{array}{r} 45.8 \\ 26 \\ \hline 0.28 \end{array}$
Dec	6° 31' 34.3"
Hr. Ch.	56.61"
Time Cor.	2' 26"
2 hrs	50"
3 "	1' 02"
4 "	1' 26"
5 "	2' 30"

Dec. 6° 54' 9.6"
 Hr. Ch. 56.33
 Eq. time 2' 9.44

Dec 7° 16' 38"
 Time Cor. 2' Ref. 3 hrs 1' 02"

40"

22

Survey for Deross & Burt
Description of road

Beginning at a point ^{10 ft c} 15 1/2', East, N 1° 22' W. 4.21
From the corner common to Secs 3, 4, 9 & 10
T. 28 S. R. 6 W. W. M. Douglas Co. Ore.

sta	ref	Needle	correct	Dis.
4.0			N 1° 22' W.	4.21
4.21	37° 06' R	N 27° 55' E	N 35° 44' E	13.57
17.78	1° 00' L	N 36° 55'	N 34° 44' E.	12.92
30.70				30.70

37.55

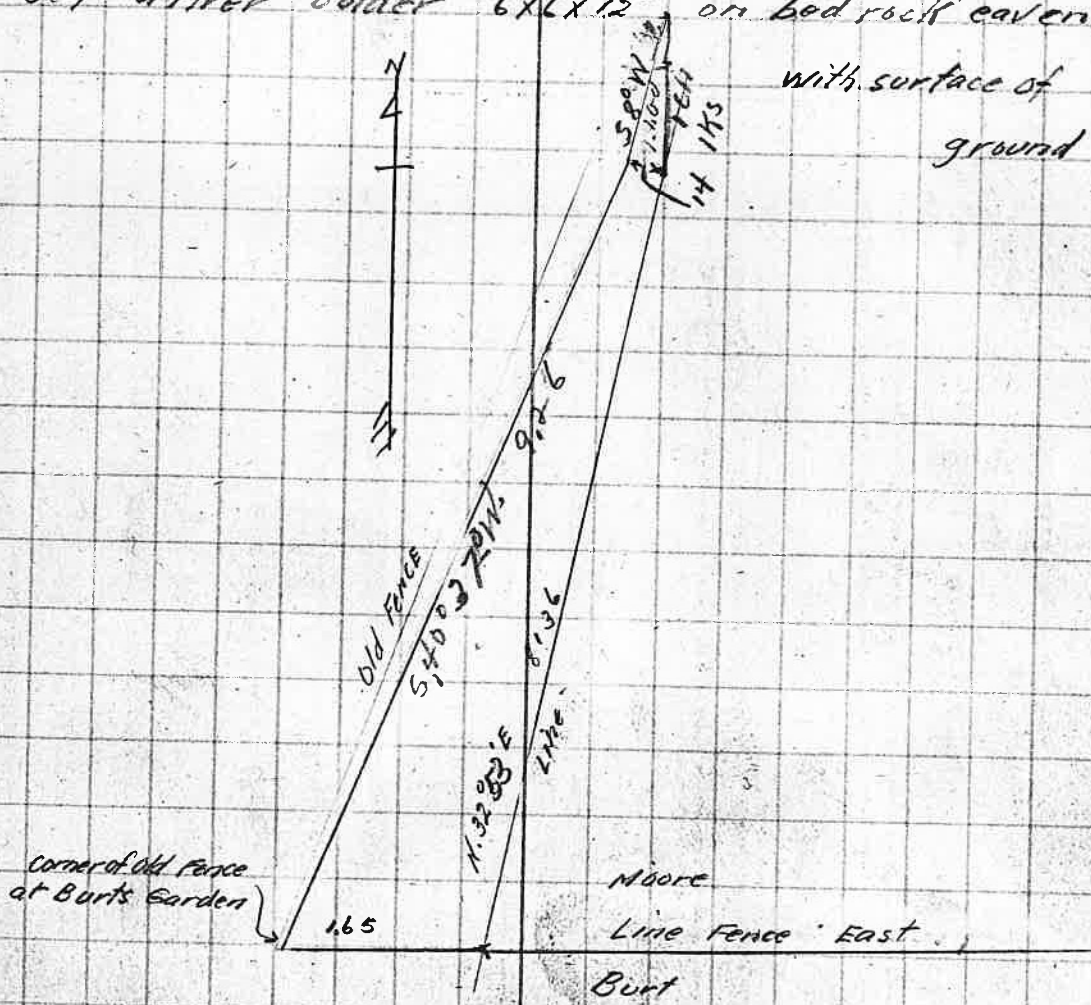
13.57
4.21
17.78

Set a white, river boulder 9" x 10" x 12" - 6 in below surface for center of road.

Set a stake 15.143 E. of sec. cor. for B.S. Transite pt. North of B.S.

in gateway at house.

To North line of Burks place set a river boulder 6 x 6 x 12" on bed rock even with surface of ground



Continue
for Burt & Doross.

Beginning at corner to Secs. 3, 4, 9 & 10

Set solar and run N35°E

N35°E 28.17 to stake in field

N 6° 03' W 2.47 Ms To Burt N.E. Corner in center

At corner Deflect 6° 03' to right from
back line and run

South 1.0 ch Deflect 32.56 R

S 72° 56' W

To sec cor.

From Sec. Corner 3, 4, 9 & 10

28.17 N35°E 28.17

44° 24' L N 9° 24' W

45° 08' R N 35° 44' E - 5300 ft W

is last course of road

To stake 3 Ms south of Burt's N. line
and in centre of road given to Doross.

147 Chs. to stake
1 ch east of cor
44° 59' L to stake RR

Def 41° 03' L
of Original reserved road

Field Book No. 37

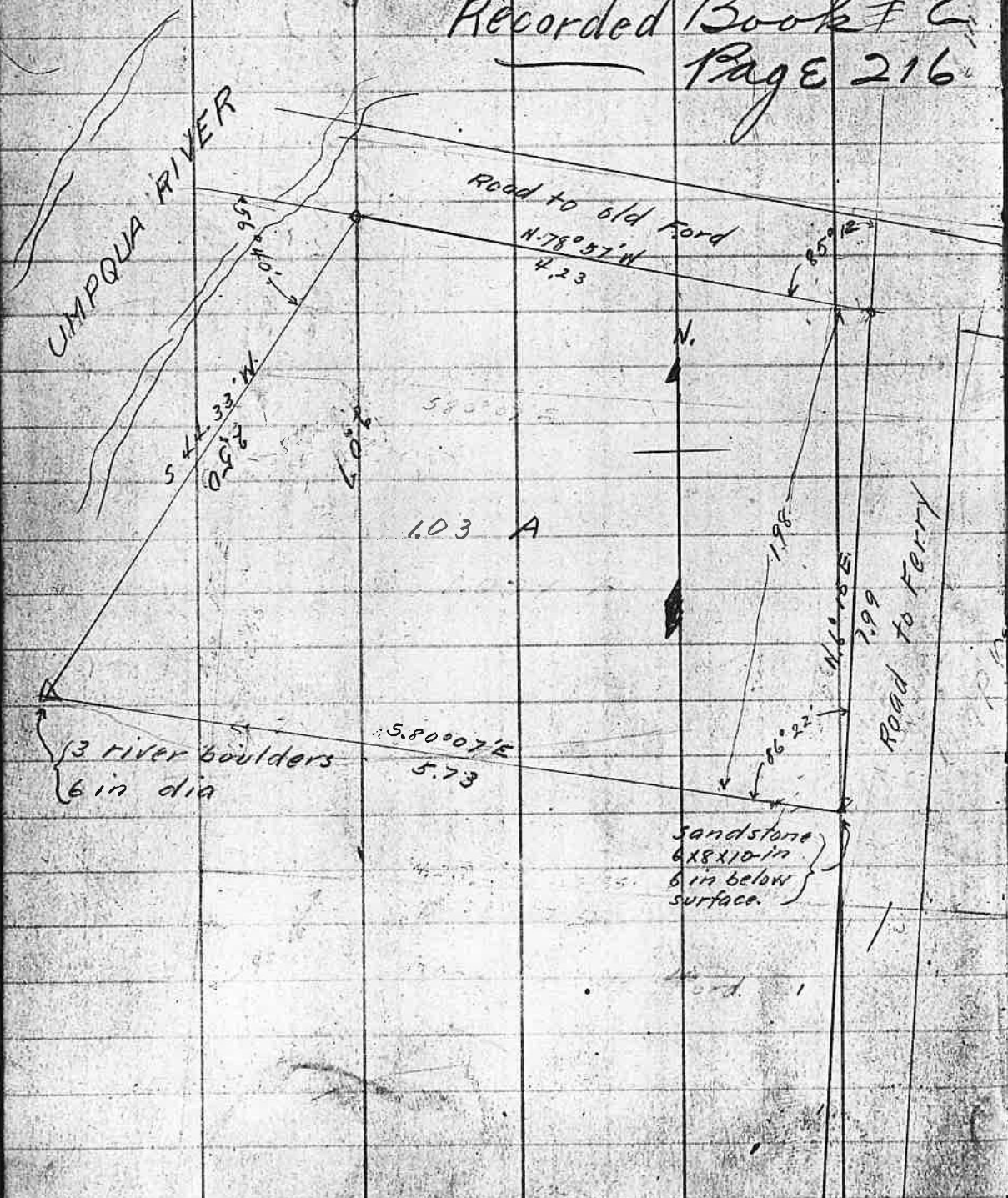
Pages 23A - 25 Blank

26

T. 28 S. R. 6 W.

Survey to cut off North 1 acre of lot
43 Plat H. Roseburg Home Orchard
Tracts. Douglas Co. Ore. for M.M. Vanhorn

Recorded Book F 2
Page 216



89 60
56 40
33 20

Tan 11° 03' = .19529
Tan 6° 15' = .10952
Tan 33° 20' = .65813
Cos 33° 20' = .83549

10952
21004.00
1.316
1.535
8.76
219.99
24.99
2.02
9.98
99.8
10079.8

.65813
1.3163600
2.005

Tan 145' .0204
4.23
6.12
4.08
5.16
0.86292

SEC 6° 15' = 1.0058
" 33° 20' = 1.1969

1.0058
1.98
80464
90522
10058
1.991484

1.1969
206
71814
33938
2.465614

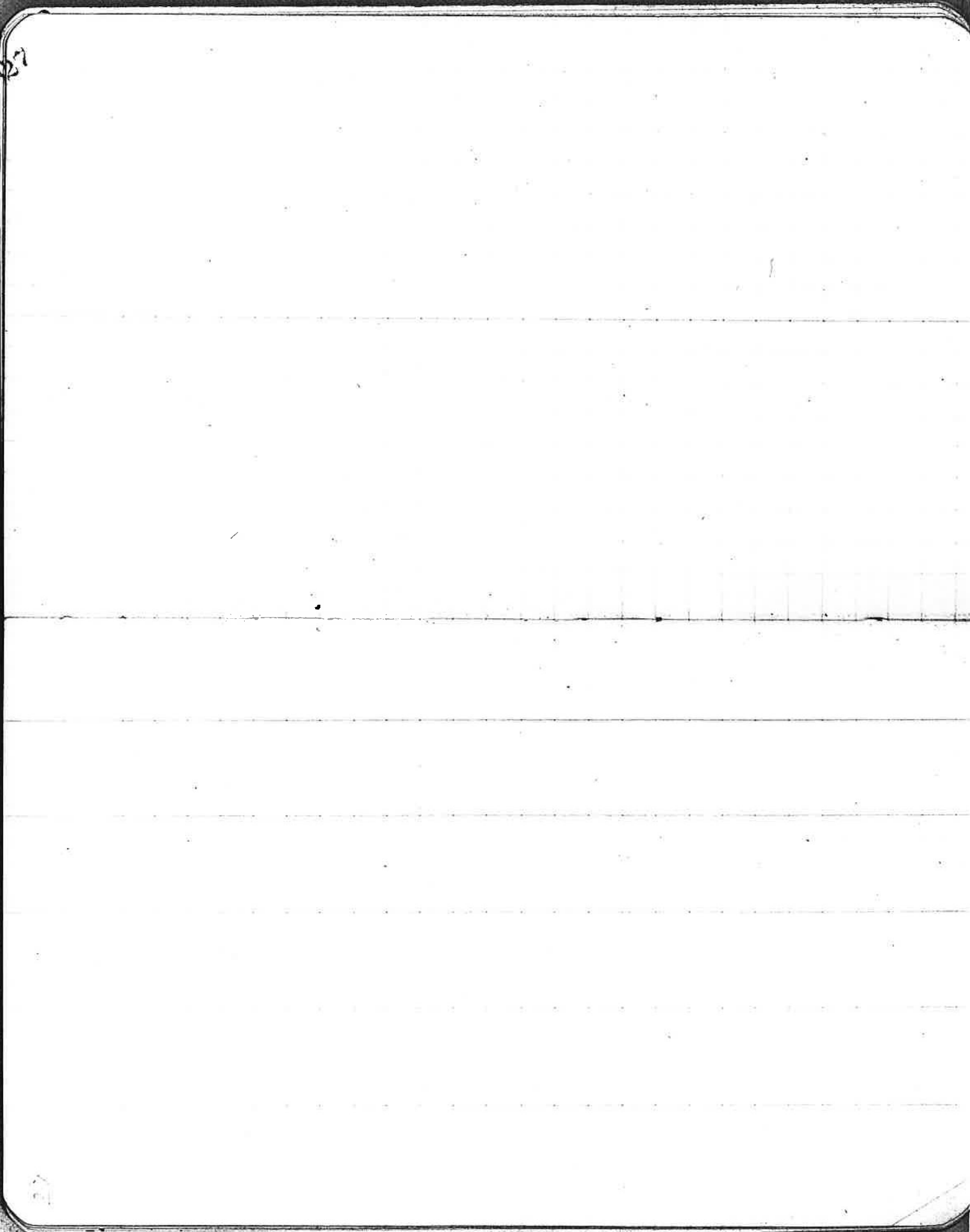
63509

206090
167018
389820
334036
557840
621054
667860

2.466
206
199
405

33 20
1 10
37 30
1.2134
206
72804
24268
2,499664

.0204
423
612
408
516
0.86292
11969
208
95702
33938
2.48



28 April 16th 1915 Lat 43° 09'

Survey for C.S. Andrus,
To determine S.W. Corner of

John Cox Claim No. 49.

Beginning at the N.W. Corner

Find Original B.T. corner A rock

previously set N. 88° W. 93 ft.

Take rock as corner and run a

random. old fence line

6.78 N.E. Cor of Halpain & E

43.05 Intersect 32 ft's East of rock in center of Co road.

80.83 Set temp stake.

81.35 Intersect transite line from

81.29 East corner to claim 49.

79.26 West of S.E. corner.

Present fence corner on

S.W. cor of claim 49.

29.49
27
29.26

Chain of J.M. Arnington
& C.A. Parker

April 16th 1910.
Continue for Andrew.

Begin at the S.W. Corner of C.49
Find a granite rock in correct
place. Witness tree. (Original) still
standing but dead
Offset 200 lks West and
ran North on offset line

50.00 Set back 200 lks East on original
random line

70.00 Offset 50 lks West

80.53 Intersect transite line previously
run in from East. 121 lks - 51 Offset

81.12 Random line intersects E. of W. line
71 lks West of rock

Set a stake at 80.53 and
99.68 West from S.E. Cor of C.49.
and mark

A.B.O. 18 in N 11° 45' W. 196 lks

" " 9 " N 43° E 369 "

Rechain this line and check. 99.67 or
against 99.68

Set S.W. Corner of Cox Claim 49

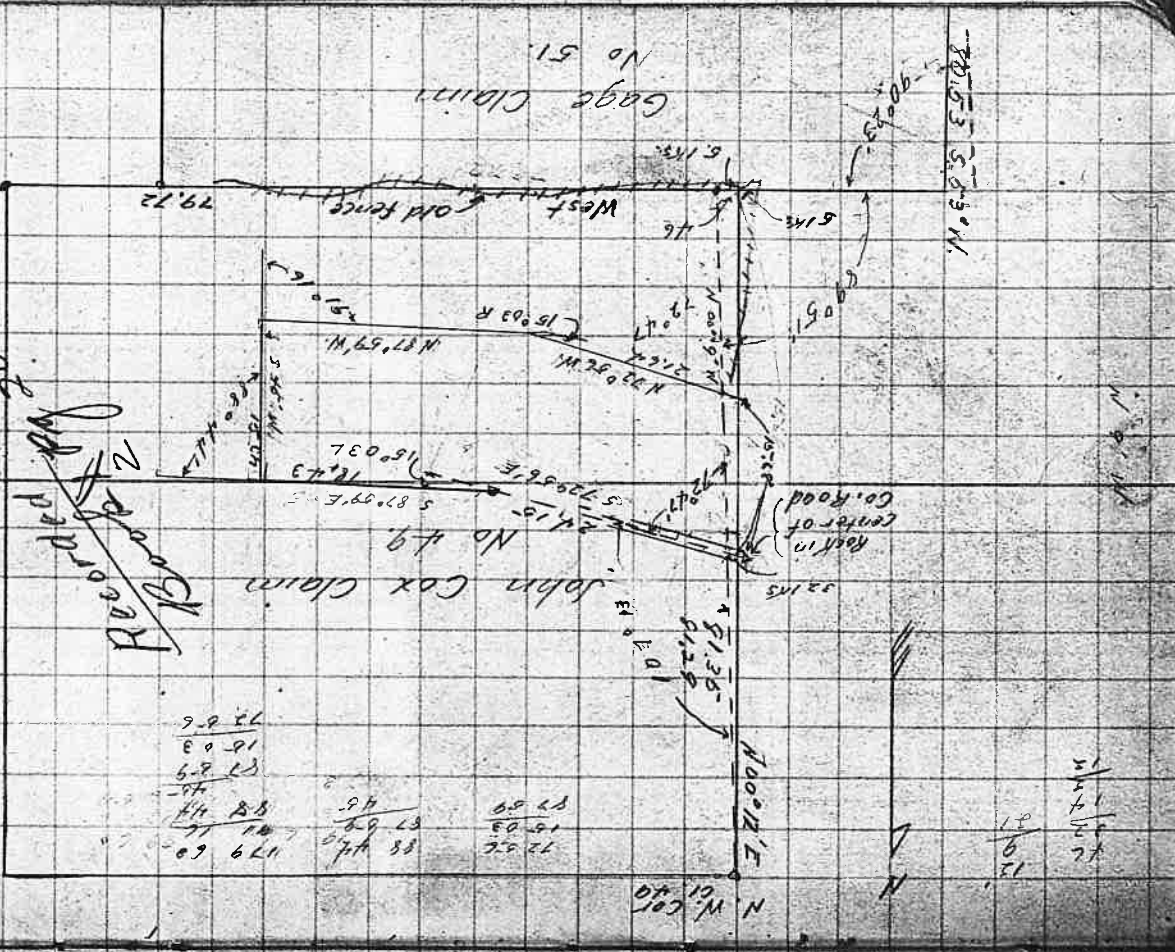
79.72 chs West from S.E. Corner and

81.35 from N.W. corner of C.49

Deposite Rock 71.7 x 18 in also
pieces of broken cast iron

179.60
91.15
88.44
91.15
179.60
19.03
72.15
91.15
67
71

179.60
91.15
88.44
91.15
179.60
19.03
72.15
91.15
67
71



6 in under ground,
 binder frame, for S.W. Corner of Cox
 Claims 49.

and mark

A.B.O. 28 in N, 44° W. 45 lbs.

" " " 36 " S 68° E 141 lbs.

40.27

373

At a point 36.54 East from the
 S.W. Cor of C 49 set a rock 8x8x8
 inches with a brick 6 inches under
 ground

At 40.27 East of the S.W. Cor
 set a sandstone rock 6x8x12
 inches with broken beer bottle
 6 inches under ground and
 marked.

A.W.O. 20 in N 38 1/2° W 128 lbs.

marked C.S. & BT

At Freys S.W. Cor set a sandstone
 rock 8x8x10 inches and mark

A.B.O. 24 in N 20° E 67 lbs.

24.45
1.98
22.47
33
21.84
1.98
21.37

18.43
1.98
20.41
19
20.60

81.35
45.05

1030
10
640
135
1710

Tan 21' .0061

Tan 47' .0128

Tan 170' 13' = .30997

cos " = .95519'

Tan 12' .00349

.95519)

15 60000
9 5519
544810
47 7595
672150
668633

(15977)

100349
15.68

2732
2214
17.15
349
10548372

30987
15

154935
30987
464805

60.62

30382
37
212674
91146
1124134

45.05
15.57
60.62
11
65.73
4

45.05
15.67
60.72
20.57
81.29

24.15
33
23.82
1.98
21.84

31

Sunday May 2 1915
Miller & MacGregor v.
survey to locate 1/4 cor bet secs
9 & 10 T. 31 S. R. 6 W

Began at corner to secs, 9, 10, 15 & 16.

Ran a random compass line North.

40.00 set temp' stake but find no
evidence of corner. and have no
time to do more as the hour is
late and parties do not care
for more definite information

sin	2 ch	vert	25°	cos =	9063	27.2
.422						26.7
345	3 "		33°		.848	10.9
129	1 "		39°	4 rds over	.777	<u>63.5</u>

5

0032

32

33

April 21 1915

Resurvey to check up road for A.L. Deros

0033

51.31
7
359.17

51.31
153.93
60
63.9

Lat 43° 09'
Dec 4 AM 11° 35' 7.2"
Hr Ch 51.31"
Eq time - 1' 6"

Ref hr
0 37"
2 45"
3 53"
4 1' 03"

4 AM 11° 35' 7.2
5 59.2
11° 41' 06.4" + 45" = 11° 41' 51"
1 53.9
11° 43' 00.3" + 45" = 11° 43' 45"

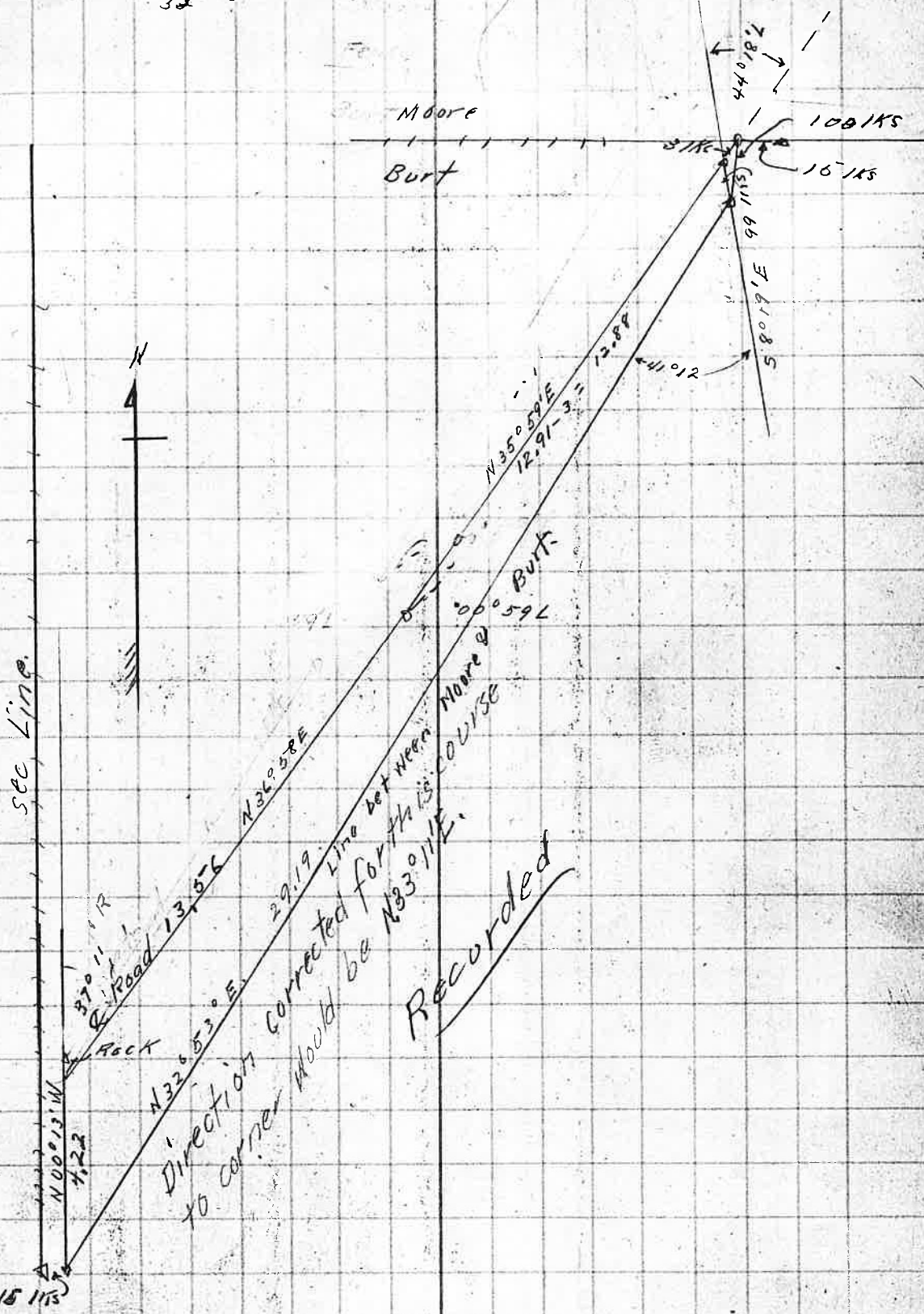
34

Deross & Burt work
checked.

4.1	6
8	14
32	19
	56

40	74
81	19
32	56

0034



Recorded

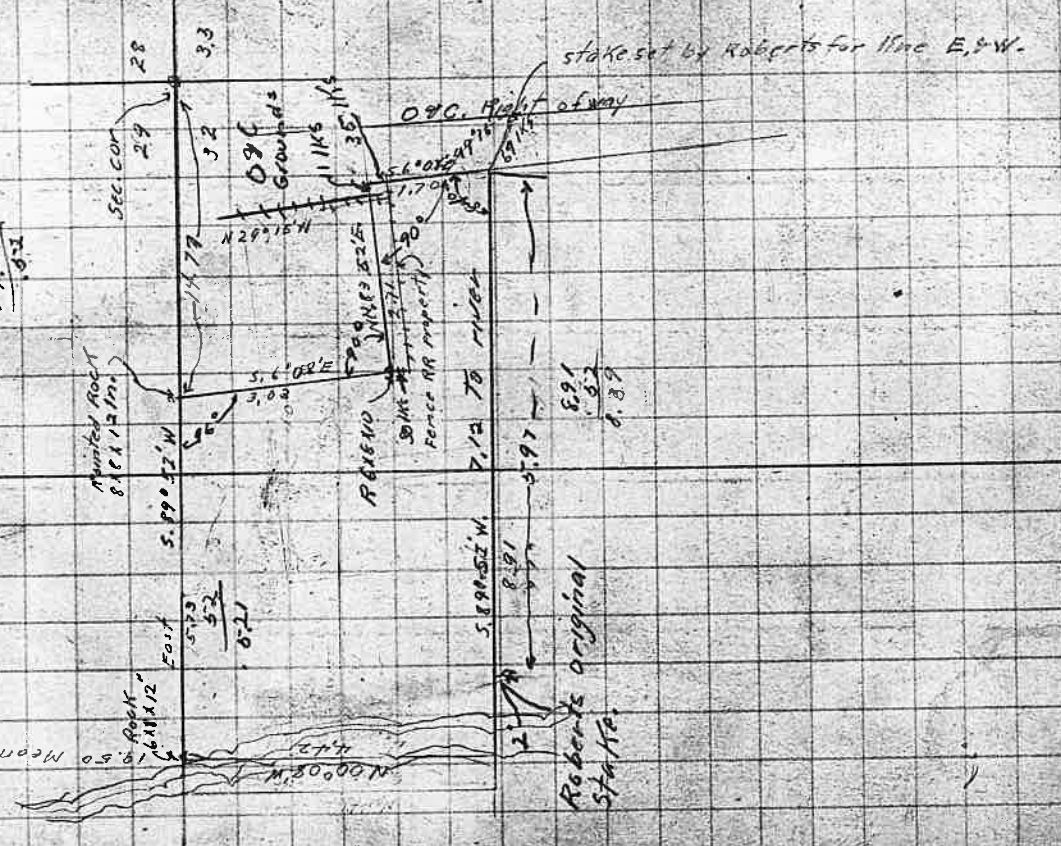
35 Survey for Mary E. Phipps of Dillard
T. 28 S. R. 6 W. W. M. Sec. 32. May 3rd

To locate 3. Acre tract Decided to
Lela Rice and Sarah Rice.
Beginning at the corner to secs. 28, 29, 32 & 33
T. 28 S. R. 6 W. Find Tree Called for in
Original Notes, S. 85° 30' E. 272.1 Ks.
Tree called N. 75° 34' W. is N. 75° 34' E. 388 Ks.
Thence 1 sight at Neander post near
river bank. (Which I had previously set
From Original tree S. 18° E. 57 Ks.)
599° 52' W
19.62 Meander post. angle 60° R 266.2 Ks.
7.10 81° 46' L. 624.5' W
21° 46' R.
1.00 Point on line on bridge
26.32
27.00
39.96 Intersect 1/4 line. 49 Ks North of
corner. Maple tree still in place.

95 60 87 60
59 52 60 8
6 08 10 82

52
89 47

14.77
5.73
20.50
19.98
0.52



190.1
572.2
510.3
Rice
Rice

Roberts original
Stake

Lat 43° 05' May 3rd 1915

HR-Cth. 46.62

EQ-Time 3'

Dec 4 A.M.	+ 15° 26' 5.8"				
	3 03				
9 A.M.	+ 15° 29' 46.6"	+ Ref 47"	= 15° 30' 45"		39"
10 - "	15° 30' 45.4"	+ " 39"	= 15° 31' 24"		47"
	46.6				1' 04"
11 - "	15° 31' 22.0"	T " 33"	= 15° 32' 05"		41"
	93.2				
1 - P.M.	15° 33' 05.2"	+ " 33"	= 15° 33' 38"		
	46.6				
2 - P.M.	15° 33' 51.8"	+ " 39"	= 15° 34' 30"		

036

2023.10.10

38 $\frac{18}{15} \frac{75}{25}$

Beginning at a point which is a New Wood post set in the line of a picket fence in Gilliams garden, running south on the fence line

18.88 To the cross fence on the North line of the 5 acres to be decided.

25.50 To a stake set for the South boundary.

36.88 To a corner Witnessed by a C.S. tree. S 65° E. 20 ft.

45.36

46.89 Intersect sec line between secs

25.8.26

corner 1.88 115 East of 1/4 corner Find rock set for corner Original tree S 25° W 93 115

New trees marked

B.O 6 in N 20° E 21 115
" " 6 " S 53° W 20 "

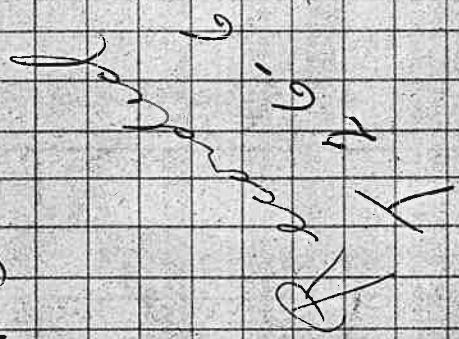
Should be 25/36?

18
18
36
88
58

46.89
24.63
22.23

46.89
45.36
1.53
46.89
10.80
21.39

Tree guessed in



Mr Ch 42.57

May 6 Lat 43° 17'

Dec. 16° 18' 29"

3 PM 16 25 36 47"

4 " 16 26 48 1' 04"

16° 25' 32"

16 27 32"

039

~

2046 STATE ON BILL 39x6

40. May 23, 1915. Survey for Rice Brothers T29.5. R.6 W. Sec. 4.

(For Correction See Page 41)

Begin at near

40.00
27
39.27

60
35
25

Begin at corner to secs 4, 5, 8 & 9.
Find Post set by Cain Evidently in position this corner for a road tie.
Cain located this corner for a road tie.
Ran East } random transite line with
{ solar } reading for direction var 20°40'E
{ need }
4.00 Offset 3 1/2 N. North.

10.00 Stake in Creek
22, 27.5 " " Road
28, 46. " " Edge of wood near Grainfield
35.00-3 set stake, and set stakes every
5 chairs. to sec Cor.

May 28th continue
set painted rock 2x4x14 in for
Qr corner (R)

39.27 Intersect 1/4 corner 24 1/2s.
45.00 - 29 East of corner
50.00 - 31 Both Original Trees in place
55.00 - 36 Renew corner with
60.00 - 39

65.00 - 42
70.00 - 45
75.00 - 49

61.00 set back 3 1/2 N. South on random line
77.31 Intersect sec line 5 1/2 N. North
of sec cor. All 4 BT standing
Correct Bearings and distances are

B.O. 10 in	S 81° E.	99 1/2s.
W. 20 "	N 39° E	107
" " 24 "	N 1° W	132
" " 20 "	S 35 1/2° W	127

(B)

P.M. try to find corner to C/ 41.
All Distances will check by using
surface measurement.

41

See Page 40.

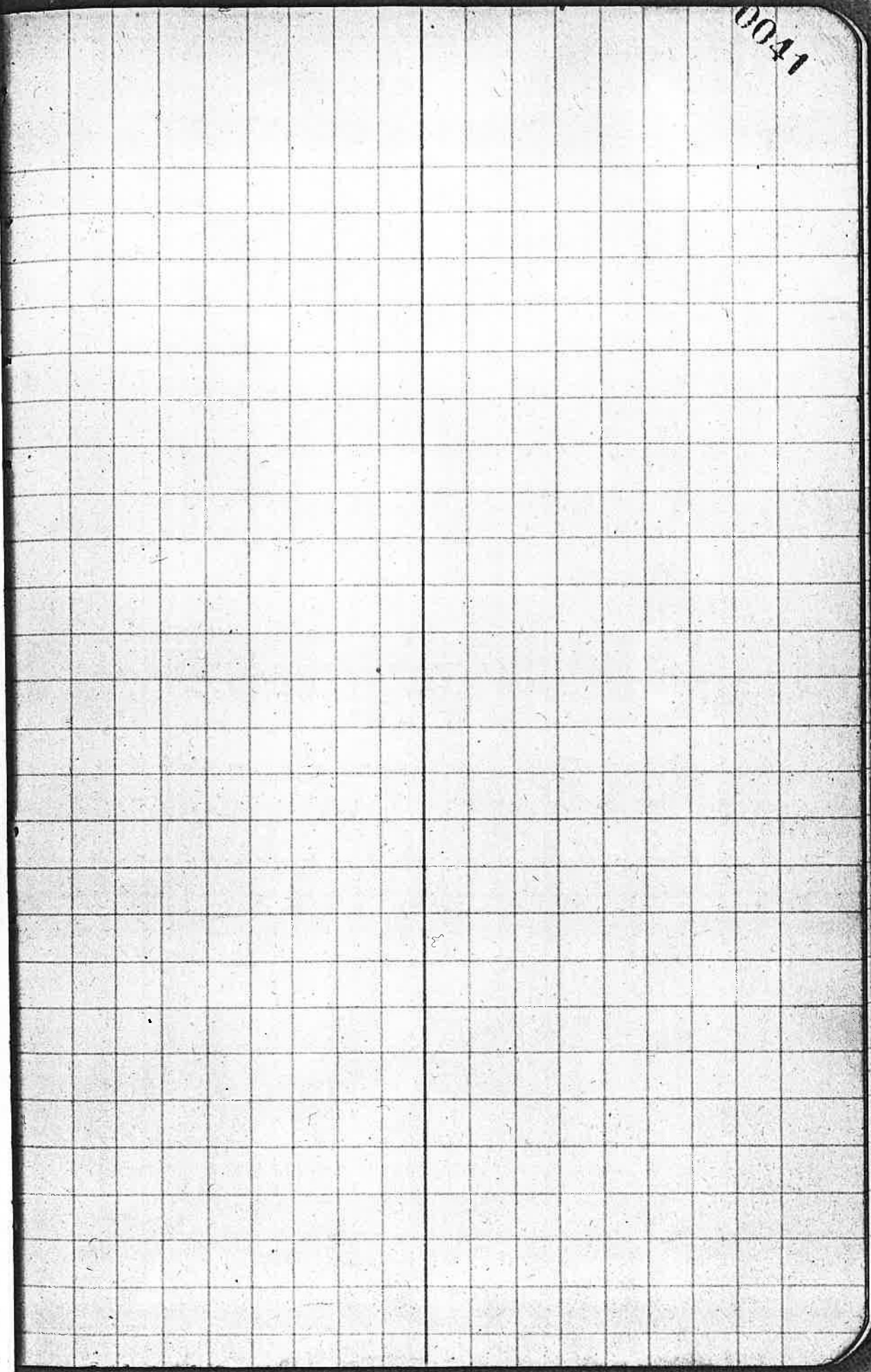
From Corner to Secs 4, 5, 8, 9, true line

$589^{\circ}01'E$

39.27 To Q^r Sec. Cor.

77.31 .. Cor. to Secs 3, 4, 9, 8, 10.

0041



43

continue for Rice Bros. June 2001

8.40	30	Correct	68	IKS	East on true line
13.40	25	"	57	"	" " " "
18.40	20	"	45	"	" " " "
23.40	15	"	34		
28.40	10	"	23		
33.40	5	"	11		
38.40		"	00		

0043

47

June 2nd Continue for Rice Bros.

From L corner on E boundary ran
East10.00 Chains Find no Evidence of
original corner,
set temp stake

North set Fir post 4x4x42 in

32.70 Marked C.5, C.46 for corner
and Mark

A Fir 20 in N 84 1/2° W 87 1/5

" " 20 " N 31° E 29 "

North

32.70

Bank of River. No Evidence of corner.

0044

0045

45-

46

Continue from Page
42 June 3rd.

Continue line East from
S.W. Corner of C.46 by picking
up line at 17.50

24.20 Intersect East line of C.41.
25 1/2 North of Corner.

Chop out original tree.

Renew corner with Oak Post.

(R)

Marked C.41. & C.S.

MARK

A.W. O 7 in S 10° W 8 1/2

" " " 7 " N 37° E 13 "

set S.E. cor to C.46. 17.50 East
of S.W. Corner and on line
of the N.E. Cor of C.41.

(R)

MARK

A. Fir 14 in S 85° W 41 1/2

" " 18 " N 40° W 45 "

0046

47

June 3rd continue for Rice Brothers.

From S.W. Corner of C. 46. ran

North random line.

2390 intersect sec line 3.29 1/2³ East
of Cor to secs 3, 4, 9, 10

0047

48

T. 24 S R. 6 W Sec. 26
Survey for M.T. Riggs Oakland

To determine Sec line between 23 & 26
also East boundary of W. 1/2 of N.W. 1/4
of Sec. 26.

Begin at corner to secs 23, 24, 25 & 26

Find corner previously set N50°E 17
1/2 distant from correct place for
corner both trees are in place

Offset 25 1/2 N5 North, set solar for direction
and ran 5 89° 40' W on random offset
line.

20.00 set stake on random line

35.00 " " " " " "

40.00 " " " " " "

46.00 set up stake on small hill

50.00 stake on random line

57.00 Offset 10 1/2 North

59.84 Intersect 3 1/2 S South of cor. set

previously as temp cor.

64.00 Temp stake

80.00 Intersect transit line N65.

85.00

90.00

Intersect 1/4 line 12 1/2 N5 North of

1/4 corner stake in place tree

5.18 1/2 W standing N 18° E is down

Renew corner with Dry-Coddy Hat

4 X 4 X 12 1/2

22
27

June, 9th 1915

10
35
23
14
15
12
2 1/2

Use corner as set.

(Note begin 13 1/2 ahead of corner)

Time observed 10.54

10:44 + 12' cor = 10.56 which

checks local time

27
13
40

Mark

A.B.O. 16. S. 32 1/2° E. 59 1/2

N.W. 1/4 24. N 87° W 48

N. Fir 36 S. 92 1/2° W 77

0048

June 9th 1915 Lat 43° 28'
4 A.M. Dec. 22° 52' 13.2"
53.40

HK-Ch 13.35"
EQ-Time - 1' 9.48"
Ref 0 - 2.6"
2 - 3.1"
3 - 3.8"
4 - 5.3"

8 - A.M. 22° 53' 06.60 + Ref 53 = 22° 53' 59.60

9 - " " 22° 53' 19.95 + Ref 38 = 22° 53' 57.95

10 - " " 22° 53' 33.30 + Ref 31 22° 54' 06.30"

11 - " " 22° 53' 46.65 + Ref 26 22° 54' 12.65"

2/40.20
20.10
60.30

49.

June 10th Continue for Larkin, Riggs & Haines

Begin at a large fence post which G.W. Cooper says is set in the identical place that Germond set the 1/4 corner between Secs. 22 & 23. When the stump of the tree 5 1/2 E. 292 1/2 S. the other tree was down at that time.

I check by place indicated where Haines says he took out a stump and find the fence post correct as near as I can tell. Thence south on random cross transit line running E. & W.

64.00 Offset 4 1/2 S East
 80.35 Intersect 1/4 line 4 1/2 S East of 1/4 Corner Laurel in place Oak cut. Chap out BT in Oak stump. marked X

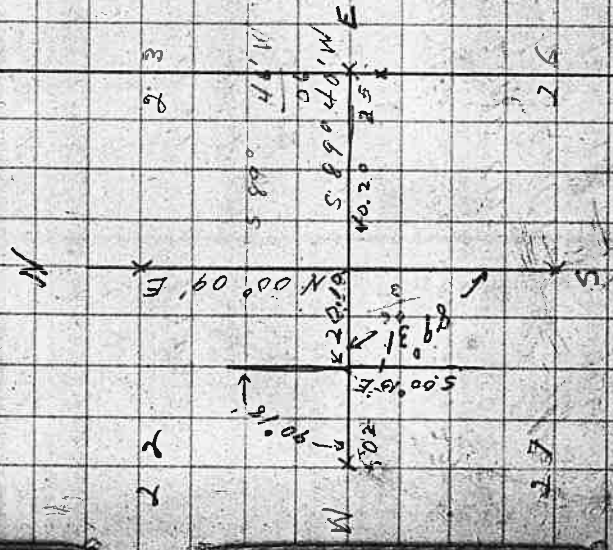
Set Rock 6 x 1 1/2 x 1 1/2 in for Corner. Mark
 G.B.O. 12" S. 30° W. 143 1/2 S



0049

Time	Lat	Long	June 10 th 1915	1915	Mag	12.37
4-A.M.	Dec 22° 57'	21.5"	10.96 + Ref. 53"	=	22° 59'	03.96"
8-A.M.	20 58	12.34	10.96 + Ref. 38"		22° 59'	01.20"
9-A.M.	22 58	12.34	35.54 + " 31		22° 59'	06.54"
10- " "	22 58	12.34	47.88 + " 26		22° 59'	13.88"
11- " "	22 59	12.34	12.56 + " 26		22 59	38.56
1-P.M.	22 59	12.34	24.90 + " 31		22° 59'	55.90

89 70
 80 31
 09



Continue for Riggs Haines & Larkin

Set corner to secs 22, 23, 27, - 27 1/2
1/4s South of transit line E & W. and
on transite line N & S.

Rock 8x16x20 Marked + for cor
Marked

	AN Ash	14	N. 17° E.	208	IKS
(R)	"	9	N 5° W	240	"
	A. W. O.	10	S 82 1/2° E	134	"
	Maple	20	S. 20 1/2° W.	424	"

Set 1/16 cor N 89 1/4° E of sec cor, 22, 23,
26, 27, 20, 10 chs.

Rock 14x14x30 in And Mark.

	AN Ash	16	in East	166	IKS
	"	12	N 85 1/4° W.	292	"

Set 1/4 corner Rock 6x8x12 in
Marked + No trees near

Set on 1/4 corner and sight 500° 03' E.
at anchor post at County Road, previously
set as line between Riggs and Larkin,
and line in intermediate stakes.

The 1/4 corner on the South of
Sec 16 Was not Witnessed by

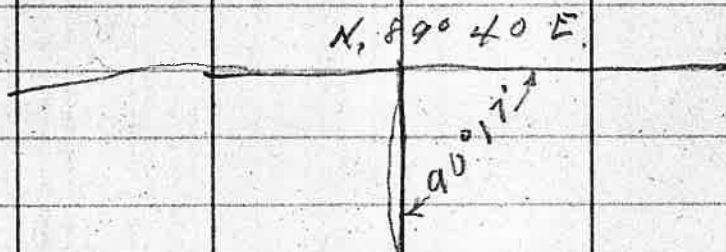
Corrections for random line running

West

5	-	22		
10	-	21		
15	-	20		
20	-	19		
25	-	18		
30	-	17		
35	-	16		
40	-	15	+	2
45	-	14		
50	-	13		
55	-	12		
60	-	11	+ 12	= 23
65	-	10	+ 12	= 22
70	-	9	+ 12	= 21
75	-	8	+ 12	= 20
80	-	7	+ 12	= 19
85	-	6	+ 12	= 18
90	-	5	+ 12	= 17 ✓
95	-	4	+ 12	= 16 ✓
100	-	3	+ 12	= 15 ✓
105	-	2	+ 12	= 14 ✓
110	-	1 1/2	+ 12	= 13 1/2
115	-	1	+ 12	= 13
120	-	0	+ 12	= 12

51

trees and Riggs and Lar-Kin
think it too much work to replace
it to make the legal subdivision



52 June 12th 1915.

Survey for H. Larkin J. M. Davison

To locate south boundary of sec 16
and approximate East boundary of
N $\frac{1}{2}$ of S.W. $\frac{1}{4}$ of sec 16.

Begin at an anchor post located
where M. B. Germond set $\frac{1}{16}$ corner
West of N.E. corner of sec 21.

Ran West.

Feet Offset 10 ft South

200 N 6' set up stake

300 N 4' "

400 N 2' "

735 S 5'

13.27 Intersect $\frac{1}{4}$ line 17 ft North
of $\frac{1}{4}$ corner find Tree S $3\frac{1}{2}^{\circ}$ E
3 1/2' Chopped out other tree
gone. a rock set in correct
place.

Chain of M.T. Riggs.
F. Adams.

June 12	1910	Lot	43° 39' N	HI-CA	60	10.31
Dec	4-AM	23°	6'	257"	1	5.0
				431		4.31
June 13		23°	8'	08.2"	+ Ref	31" = 23° 8' 39.2"
Dec	23° 18'	20 H				
	23° 11'	42.19				
		02.59				
				38"		
				23°		
				12'		
						40.29

Recorded
Book - pag 26

HI-CA 60
10.31
5.0
4.31

53.

Continue from last page.

18.00 32' stake
 24.00 50' " on side hill in slashing
 26.00 58 1/2' "
 28.50 69' "
 32.00 81' set up stake in creek
 33.00 " " " " Canyon
 35.80 89' " " " at stub.

39.90 Intersect Sec. line 100 feet
 North of corner to Secs 16, 17, 20 & 21
 Find corner renewed, One laurel
 and Fir gone Mark
 A Fir 60 in N 88 1/2° W 53 ft.
 " " 8 " S 7 1/2° W 28 "

Set 1/16 corner at 73.31 ft west of
 1/4 sec corner on south of sec 16.
 corrected 58 1/2 ft south of transit
 line. Cedar stake 4x4x4 1/2 in
 From which

A.B.O. 12 in brs N 83° E 111 Ft
 " " " 30 " " N 3 1/2° W 112 "

0053

$$\begin{array}{r} 39.90 \\ 13.27 \\ \hline 2/26.63 \\ 13.31 \\ 13.27 \\ \hline 26.68 \end{array}$$

21

54

continue for Larkin & Davis

Monday June 14th 1915

Begin at $\frac{1}{16}$ cor on North side of NW
 $\frac{1}{4}$ of sec. 21,

Offset 80 feet East on transite
line running West. turn angle
from East, $92^{\circ}23'$ Left Ran transite
line

$$\begin{array}{r} 58\frac{1}{2} \\ + 41\frac{1}{2} \\ \hline 100 \end{array}$$

13.20

Temp stake.

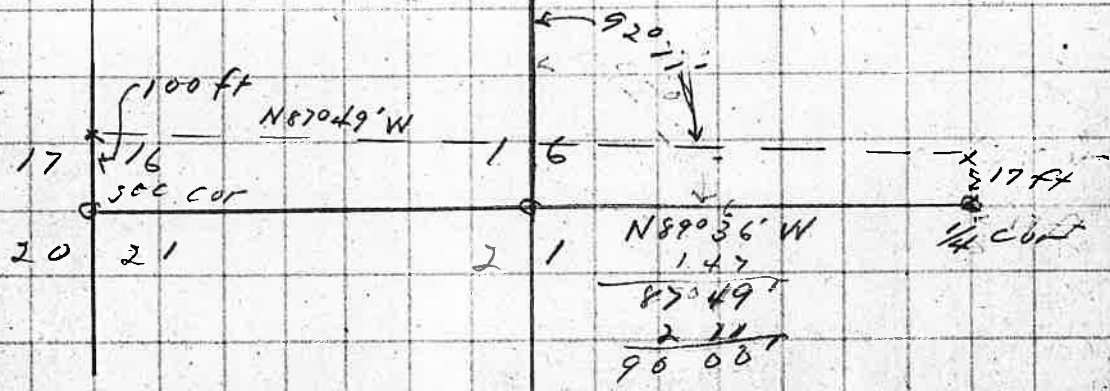
26.40

set temp corner 80 ft West
of Offset line.

On return set all temp stakes
80 ft West of Offset line.

This is mountainous land and
Larkin & Davis do not wish
to subdivide the Sec.

N



56

June 18

Continue for Dodge, Rice Bros & Redding
From $\frac{1}{4}$ corner on south boundary
of sec 32. Ran
N89°57'E Randoms Twp' line.

Set stakes each 500 ft for
correction

24.00

11.00 Offset 2' south.

18.00 ? Set back 2' North

24.00 Offset 2' North

26.48 Intersect sec line 6 inches
North of corner.

Renew Corner with laurel Post
Tree in sec 4 gone.

89° 46 1/2' R.

1056

90 19

June 19, th

Recorded

57

June 19th 1915

Continue for Dodge, Rice Bros & Redding

To run line E & W through sec 32.

I begin on West side of sec.

Find an anchor post, also cut out

set for $\frac{1}{4}$ corner. Both trees

in place. then ran

East random line.

200

Offset 1 ft south.

26.34

intersect transite line $25.63 + 59 =$ 26.22 ft south of $\frac{1}{4}$ corner on

North of sec 32.

52.80

set temp stake and search
for $\frac{1}{4}$ corner. Could find
no definite evidence.
do not establish corner.

1057

26.03
26.52

26.00
25.63
26.22

Monday June 21st 1915

Recorded

58

T285 R6W
 June 22nd Continue for Dodge
 Rice & Redding

Set $\frac{1}{16}$ corner on south boundary
 of S.E. $\frac{1}{4}$ of sec 32. and
 Mark

A B O 14 in N. $24\frac{3}{4}^{\circ}$ W 45 ft

" " " 26 " S. 68° E. 53 "

N 00° $\frac{1}{2}$ E Through sec 32.

26.87 intersect Random Transit $\frac{1}{4}$ line
 E & W through sec. 32.

39.75 East of $\frac{1}{4}$ corner on
 West boundary of sec 32.

39.76 Set temp stake, do not chain
 farther, transit on out. and
 line in. Line intersects
 37 ft East of corner.

Return to sta 39.76 and set
 $\frac{1}{16}$ corner in center of N.E.
 $\frac{1}{4}$ of sec 32. set 25.5 feet
 West of transit line.

Mark

A Fir 30 in S. $26\frac{1}{2}^{\circ}$ E. 40 ft

" " 18 " N. $34\frac{1}{2}^{\circ}$ W. 45 "

Set $\frac{1}{16}$ corner on $\frac{1}{4}$ line in
 East half of sec 32.

26.57 North of south line

1058

$$\begin{array}{r} 26.87 \\ 13.25 \\ \hline 40.12 \\ 36 \\ \hline 39.76 \end{array}$$

39

$$\begin{array}{r} 26.87 \\ 36 \\ \hline 26.87 \\ 13.25 \\ \hline 39.76 \end{array}$$

40
40

June 23 rd

Recorded

of sec 32. and 17 ft West of
transite line. running North

Mark

A.B.O. 24 in N. $71\frac{1}{2}^{\circ}$ E. 52 Ft.

" " " 16 " 56.7° E 45 "

set $\frac{1}{16}$ corner in center of
S.E. $\frac{1}{4}$ of Sec 32. — 132 $\frac{1}{2}$ Ft
North of $\frac{1}{16}$ cor on south
boundary of sec. and 8.3 ft
West of Transite line

Mark

A.B.O. 14 in $53\frac{1}{2}^{\circ}$ E 16 ft.

Fir 18 58° W. 27 "

June 23rd at 4:30 P.M.

From $\frac{1}{4}$ sec Cor on South
boundary of sec 32.

ran West

set stakes every 50 ft.

18.00 Offset 1 ft North

26.37 intersect stake at corner

Set New post at corner

Check corner from Origin

Trees. Laurel is gone

0059

Recorded

✓

Rice, Dodge & Redding

June 23rd 1915

Set $\frac{1}{4}$ Corner in center of
Sec 32 23 1/2 feet south of Transit
line running East through the
Sec and 7 feet East of
Transit line running South through
Sec.

Mark

A.W.O. 20' in S 25 1/2° W 153 feet
" " " 30 " N 49 1/2° W 156 "
" B " 18 " N 6 1/4° E 84 "
" Cedar 12 " S 23° E 43 "

(R)

Set $\frac{1}{16}$ Corner 1322.75 feet
South of $\frac{1}{4}$ Corner on North
boundary of sec 32 and 3 1/2
feet East of Transit line
Running South.

Mark

A. B.O. 36 in N 59° E 46 feet
" " " 30 " S 46 1/2° E 49 1/2 "

Thence East to $\frac{1}{16}$ corner
in Center of N.E. 1/4 of Sec.

32

1322.4 Intersect 3.5 feet south of corner.

2/26 45.5
13 22.70

3996
23976
23976
2203736
131186
8322
26140

Added

13.59.0
13.22.0
8.36

61 July 9th 1915, sec, 9, T28S, R5W

Recorded
B72 P9229

survey for W. E. Thomas in behalf of
S. Marks & Co.

Begin at s.w. corner of the s.e. $\frac{1}{4}$ of the
n.w. $\frac{1}{4}$ of sec. 9 set solar for
direction and find that the wire fence
runs nearly due West as far as I can
see about 20 rods.

Chain on fence line

20.22 intersect sec line at $\frac{1}{4}$ cor
locate corner between secs
8 & 9 by original trees.

Thence South Needle bearing

40.50 intersect sec line 49 $\frac{1}{2}$ W West
of Cortosecs. 8, 9, 16 & 17.

Find Oak grubs and hole between
where tree N $33\frac{1}{4}^{\circ}$ W 288, 1Ks had
stood

Ash N. 67° E. Still in place

Original marks rotted out.

Ash S. 52° E. Stump badly rotted
but surrounded by second
growth trees.

061

Lat 43° 09' July 9th 1916

Dec. 4 AM. + 22° 28' 12.4"

H. CA. 1798°

$\frac{1721.5}{100.98}$
 $\frac{15.998}{}$

5

3' 9"

22° 28' 34" + Ref 38" = 22° 26' 12"

$\frac{250}{28} = 12$

062

62

63 T. 30 S. R. 7 W. Sec. 2.
 survey for Laura Slocum and
 J.F. Culver.

Recorded BK 1 p. 230
 Beginning at the 1/16 corner in the
 center of the N.W. 1/4 of sec 2.
 Find stake set by Frank Cain
 and which S.S. Bolsinger, and say is
 perfectly satisfactory. set a
 Rock 4x10x12 in and mark
 A Laurel 36 in N 78° W 58 MS.
 " Pine 36 " S 59° E 45 "

Thence South Needle direction
 var 21° 40' E
 3.00 Offset 2 ft East
 52.11 Top of bluffs above falls set stake
 3.39 across on line. Offset to measure

55.50
 61.49 Intersect sec line 46 MS East of
 1/16 corner

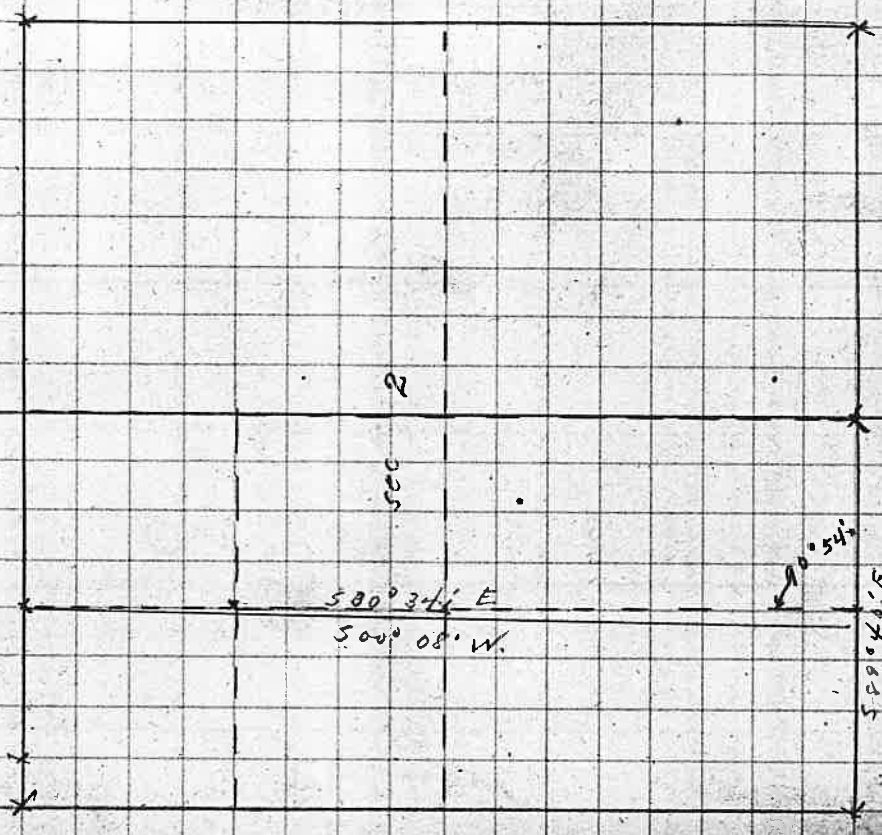
Corrections 5x5 = 42 MS + 3 = 45 - ✓

50	37.4 "	+ 3	40.4	4750 = 380
45	33.7	+ 3	36.7	
46	40.	+ 3	43.0	
15	26	+ 3	29.0	
30	22.4	+ 3	25.4	
25	18.7	+ 3	21.7	
20	15.	+ 3	18.	
15	11.7	+ 3	14.7	
10	7.5	+ 3	10.5	
5	3.7	+ 3	6.7	

063

July, 23, 1915.

Chain (A) Tompkins
 Frank Royer.



Continue for Stocun & Culver

Beginning at corner to sec. 2, 3, 10 & 11 to locate the 1/2 Quarter line on South of S.W. 1/4 of Sec. 2.

Find three trees standing. Willow gone.

Set corner in place. Rock 6x8x12

Inches, 5.89, 40'E, solar

Thence East Needle direction transite

238.28 Intersect 1/4 line 77 115 South of

19.39 1/4 corner. Find both trees in place.

Renew corner with New Wood Post.

Thence, 5.89, 14'W.

.66) 46
57.9

65.49
90.45
4919.2
2499.6
43048
4579.4570
348.8

19.39 set 1/2 Quarter corner

and mark

A Pine 24 in 53.1°E. 03 115.

" Fir 10 " N 30° 1/2 W 40 "

Expense, 3 days at 5 \$10.00

Carfare 60

Field notes 1.75

Total \$117.30

\$ 8.67

Mrs Stocun 8.67

J.F. Culver 8.67

July 24, 1915 Lat 42° 59'

Hr Ch 30.79

Dec 4-AM. + 20° 03' 12.9"

20.00
19.39
00.61

60
43
14

19° 58' 20.4 + Ref. 29" 19° 58' 48"

39.50
27
228.78
19.39
28.75

5.89 40'E
10.05
90.45

19.06'

128.60
42
86.44

46.00
43.64
2.36

60.245
37.40
2.45
11.22.8

40.248
22
149.6
12.455
3
19.45

28
248
248
248
82.26

16
57
11.2
12.8
13.92

43.13
14.03
42.59

30.79
90
153.95
277.11
392.606
246
52.5

19.60
127
48
48

2.9570
43.64
2.36
4.52
4.37
4.91
5.28

60.245
30
3240
2244
26180

60.248
22
3270
129.6
187.60

60.748
27
62.26
149.6
28.192

277
31
22

10.0748
8.50
3240
3240
413.170

60.248
22
299.2
3366.0

60.748
27
426
8740
299.2
83.100

Field Book No. 37

Pages 64A - 77 Blank

8700

$$\begin{array}{r} 119.89 \\ 81.27 \\ \hline 2 \overline{) 39.62} \\ 19.81 \end{array}$$

$$\begin{array}{r} 19.81 \\ 80.27 \\ \hline 100.08 \end{array}$$

119.89
81.27
19.81

M. M. Vanborn wants

North 1 acre of Lot 43, Plat H
of Roseburg Home Orchard Tracts.

3.27'

Levels for manure carrier

7 ft below = pt wanted = 50'

59.57

60.27

5.16

48.11

0.4

48.51

6.51

42.00

50.00

42.00

8.00

7.

15.00

120.

23

80.40

59.84

60.30

80.27 .13

13

59.97

402 0

59.97

.33

5010

60.30