

OFFICE OF THE  
DOUGLAS COUNTY SURVEYOR

Station: S 1/4 SEC. 33 <sup>340100</sup> T 32 S, R 6 W, Sec 33

Set By (Agency): DCSO

PLSS ID# 340100

Date Set: 1953

Recovered By RWS, SJF

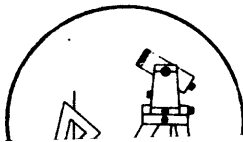
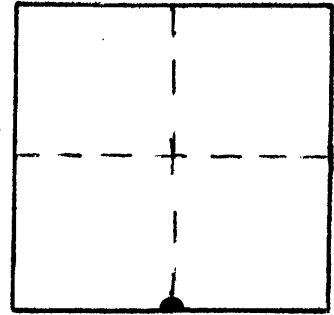
Date Recovered 2/18/86, 7/00, 7/01

Recovered By \_\_\_\_\_

Date Recovered \_\_\_\_\_

Recovered By \_\_\_\_\_

Date Recovered \_\_\_\_\_



320-06W-33-010 32S 06W 33  
S 1/4

NAD 404698.51 4137887.42  
83 42°44'23" 123°25' 0"

VERTICAL CONTROL

Elevation: \_\_\_\_\_ NGS Line # \_\_\_\_\_ USGS Line # \_\_\_\_\_ OSHD Line # \_\_\_\_\_

Precision: \_\_\_\_\_ Agency: \_\_\_\_\_ Proj. # \_\_\_\_\_ Date: \_\_\_\_\_

HORIZONTAL CONTROL OCS 27

South Zone State Plane Coordinates: Y(Northing) 404,734.52 X(Easting) 1,216,928.85

Precision: 1/5,000 Agency: DCSO Proj. # CS 66/16-23 A-C Date: 1986  
Proj. # 2013

Approximate Geographic Position: Latitude 42°44'23" Longitude 123°24'56"

DESCRIPTION and TO REACH

SET 8" spike flush in pavement 1/2000

~~A DCSO disk on an I.P. stamped~~

~~"1/4 S 1/33"~~  
~~S 4~~

~~set 6 in. below ground.~~  
(DESTROYED BY NEW BRIDGE CONSTRUCTION)

TO REACH:

Go to the bridge on Co. Rd. #12B  
(Glendale Pacific Hwy.) over Cow Creek  
in T33S, R6W, S.33. Corner is approx. 65 ft.  
south of bridge and 115 ft. east of east  
edge of pavement in road shoulder.

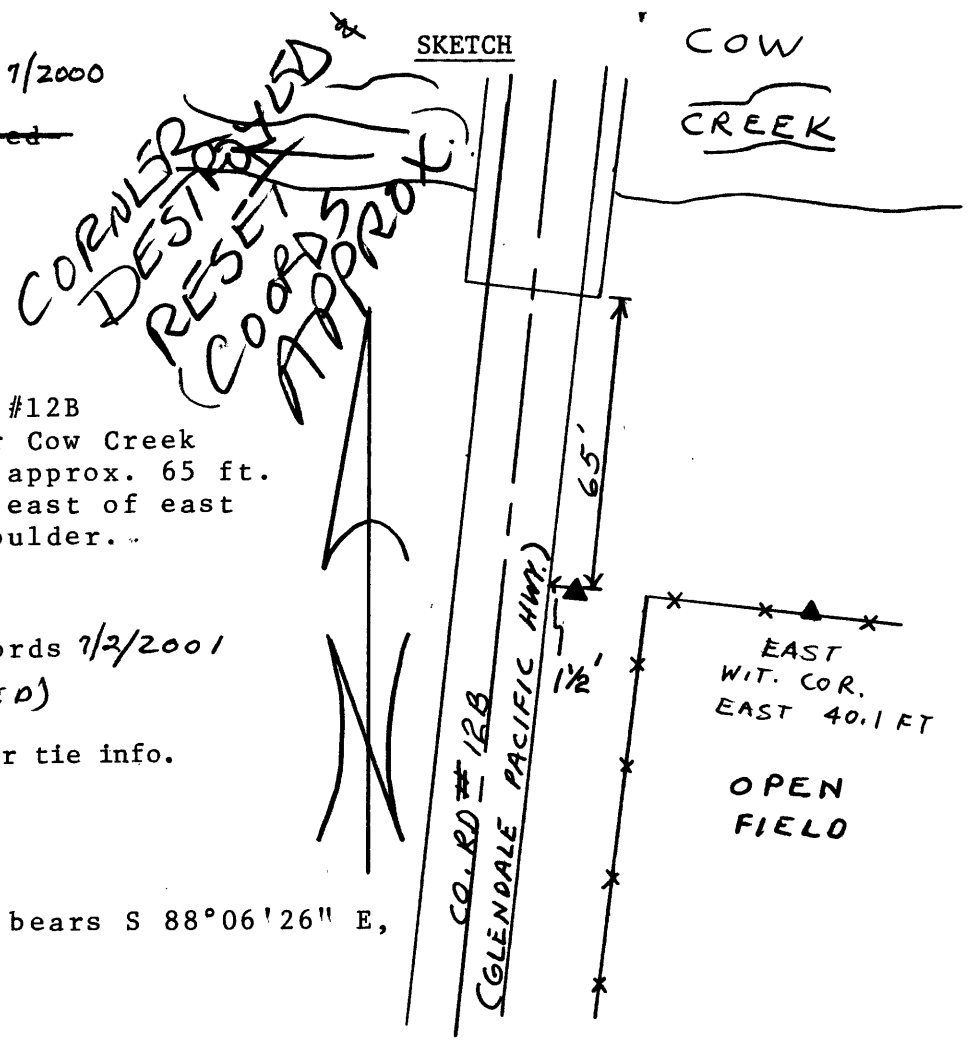
See DCSO corner renewal records 7/2/2001

(MONUMENT DESTROYED)

See control sheet backup files for tie info.

Reference Marks:

A 1 in. I.P. (E. Wit. Cor.) bears S 88°06'26" E,  
40.10 ft. (grid).



Note: For further information, contact the Douglas County Surveyor's Office, Room 205 Douglas County Justice Building, Roseburg, OR 97470. Phone 440-4278. Douglas County residents outside the Roseburg calling area, dial toll free 1-800-452-0991.