

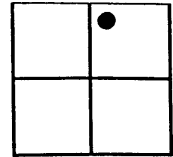
**DOUGLAS COUNTY SURVEYOR'S OFFICE**

Designation: W-074 Station: WINCHESTER NO 2 T 26 S R 6 W S 25 ¼ A

Date Set: 1953 Set by (Agency): USC & G S

Date Recovered: OCT. 24, 2008 Recovered by: SJF

- Found       New       Reset  
 Not Found       Referenced       Destroyed



VERTICAL CONTROL

NGVD 29 Elevation: \_\_\_\_\_ Feet File # \_\_\_\_\_

Precision: \_\_\_\_\_ Agency: \_\_\_\_\_ Project: \_\_\_\_\_ Date: \_\_\_\_\_

NAVD 88 Elevation: \_\_\_\_\_ Meters File # \_\_\_\_\_

Precision: \_\_\_\_\_ Agency: \_\_\_\_\_ Project: \_\_\_\_\_ Date: \_\_\_\_\_

HORIZONTAL CONTROL - south zone

N 602953.19 E 1,240,179.40 Datum/Adj.: 1927 Precision: 1/25000

Lat: 43° 17' 08.2" Long: 123° 21' 15.2" Agency: DCSO File # \_\_\_\_\_ Date: 1974

N \_\_\_\_\_ E \_\_\_\_\_ Datum/Adj.: NAD 83 Precision: 1/25,000

Lat: 43° 17' 07.6" Long: 123° 21' 19.5" Agency: \_\_\_\_\_ File # \_\_\_\_\_ Date: \_\_\_\_\_

N \_\_\_\_\_ E \_\_\_\_\_ Datum/Adj.: \_\_\_\_\_ Precision: \_\_\_\_\_

Lat: \_\_\_\_\_ Long: \_\_\_\_\_ Agency: \_\_\_\_\_ File # \_\_\_\_\_ Date: \_\_\_\_\_

N \_\_\_\_\_ E \_\_\_\_\_ Datum/Adj.: \_\_\_\_\_ Precision: \_\_\_\_\_

Lat: \_\_\_\_\_ Long: \_\_\_\_\_ Agency: \_\_\_\_\_ File # \_\_\_\_\_ Date: \_\_\_\_\_

DESCRIPTION AND TO REACH

A U.S. COAST & GEODETIC SURVEY 3 5/8 INCH DIAM. BRONZE DISK STAMPED "WINCHESTER NO. 2 1953 REFERENCE MONUMENT" SET FLUSH IN TOP OF 10x10 INCH SQUARE CONCRETE POST, SET FLUSH WITH GROUND. A METAL WITNESS POST AND SIGN BEARS SOUTH, 10 FEET.

GO TO THE INTERSECTION OF DEL RIO RD (CO. RD. #115) AND U.S. HIGHWAY NO. 99 IN T26S, R6W, SECTION 25. MONUMENT LAYS NEAR TOP OF SMALL HILL AND APPROX. 300 FT. SSW FROM SAID INTERSECTION.

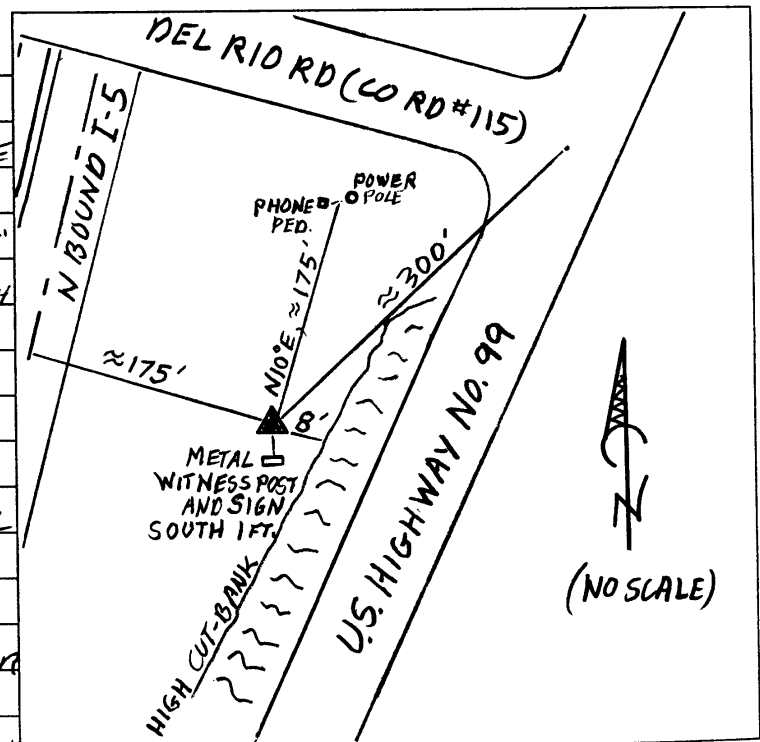


PHOTO FILE NAME

#100-1356 (4-16-001 (10) d)  
to W-074

LOCATION

M102412A

PROCESSED BY: \_\_\_\_\_

DATE: \_\_\_\_\_



10. 24. 2008