

E-049

30

418

T26S, R7W, SEC. 21

4/26/2004

Control Data Sheet

Bureau of Land Management
Oregon State Office
Branch of Geographic Sciences
Cadastral Survey Section

Control Station

Station Name: EC 41309
EC Number: 41309
County: DOUGLAS
State: OR
BLM District: ROSEBURG
BLM Resource Area: SOUTH RIVER
Location: T26S, R07W, SEC. 21
Meridian: WILLAMETTE
Mapping References
USGS 7 1/2' QUAD: CALLAHAN
USGS 15' QUAD:
Group Number: 1990
Date Occupied: 6/19/2001
Method: GPS, STATIC,
CARRIER PHASE
Receiver Type: TRIMBLE 4700
Baseline Software: TRIMBLE GEOMATICS
v. 1.50
Vert Shift Software: VERTCON v.1.00

NAD 83 (1998) Data

Adjustment Software: TRIMBLE GEOMATICS
v. 1.50
Geoid Computations: GEOID 96 v. 1.00
Latitude: 43° 17' 15.69077"
Longitude: 123° 32' 29.12789"
Ellipsoid Height: 643.234 m
Geoid Separation: -23.492 m
MSL Elev (NAVD 88): 666.726 m
NAVD88 - NGVD29: 1.086 m
Error Ellipse (95%)
Semi-Major: m
Semi-Minor: m
Axis Azimuth:
Vertical: 0.006 m

NAD 27 Data

Derivation: CORPSCON v.5.11
Latitude: 43° 17' 16.2782"
Longitude: 123° 32' 24.82615"

Horizontal Reference Stations Utilized

Douglas Co. Surveyor Stations COLONIAL (Order B) and DARLEY (Order A).

Description

Monumented with a finned aluminum rod, 3/8 in. diam., 8 ins. long, cemented in a drill hole 4 ins. deep. in solid rock, with a BLM aluminum Control Survey cap mkd.

EC 41309

GPS 2001

Station located on steep SW slope, 75 ft. S. of a trail road.

HOW TO REACH: From exit 125 (Garden Valley Blvd.) of Interstate 5 in Roseburg, OR.
Proceed west on Garden Valley Blvd.

2.0 Left on Melrose Rd.

4.1 Right on Doerner Rd.

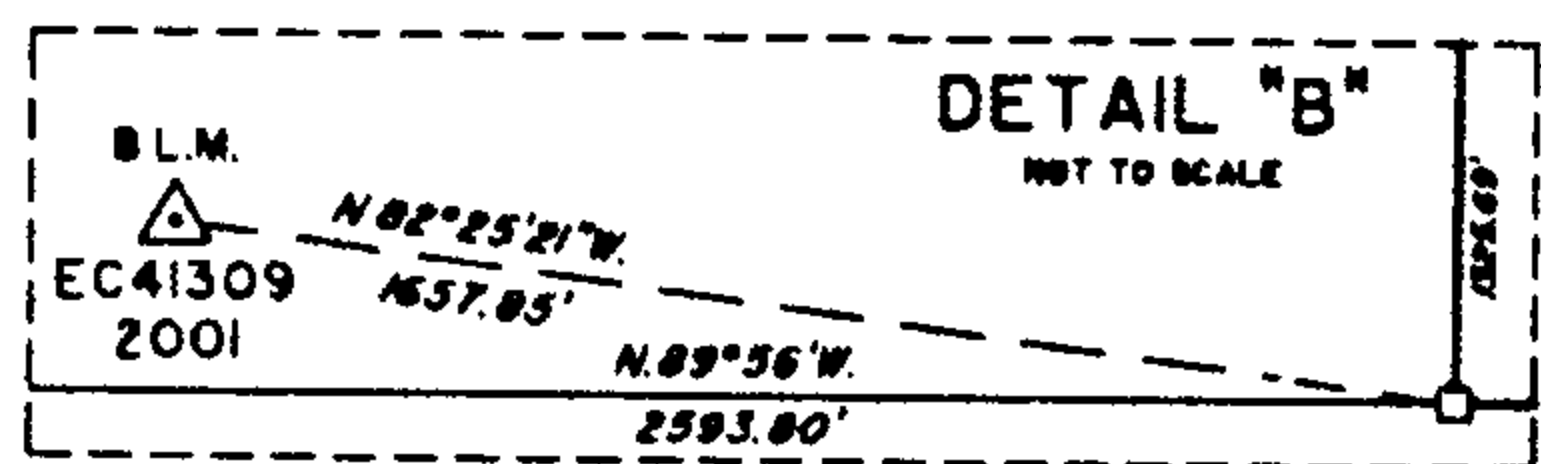
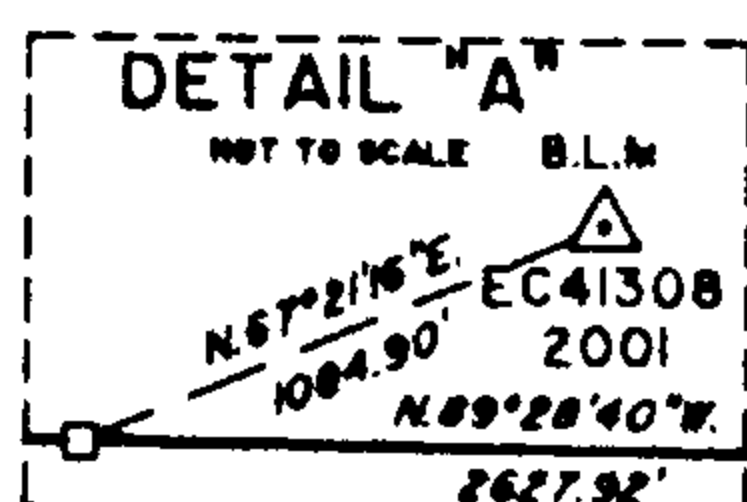
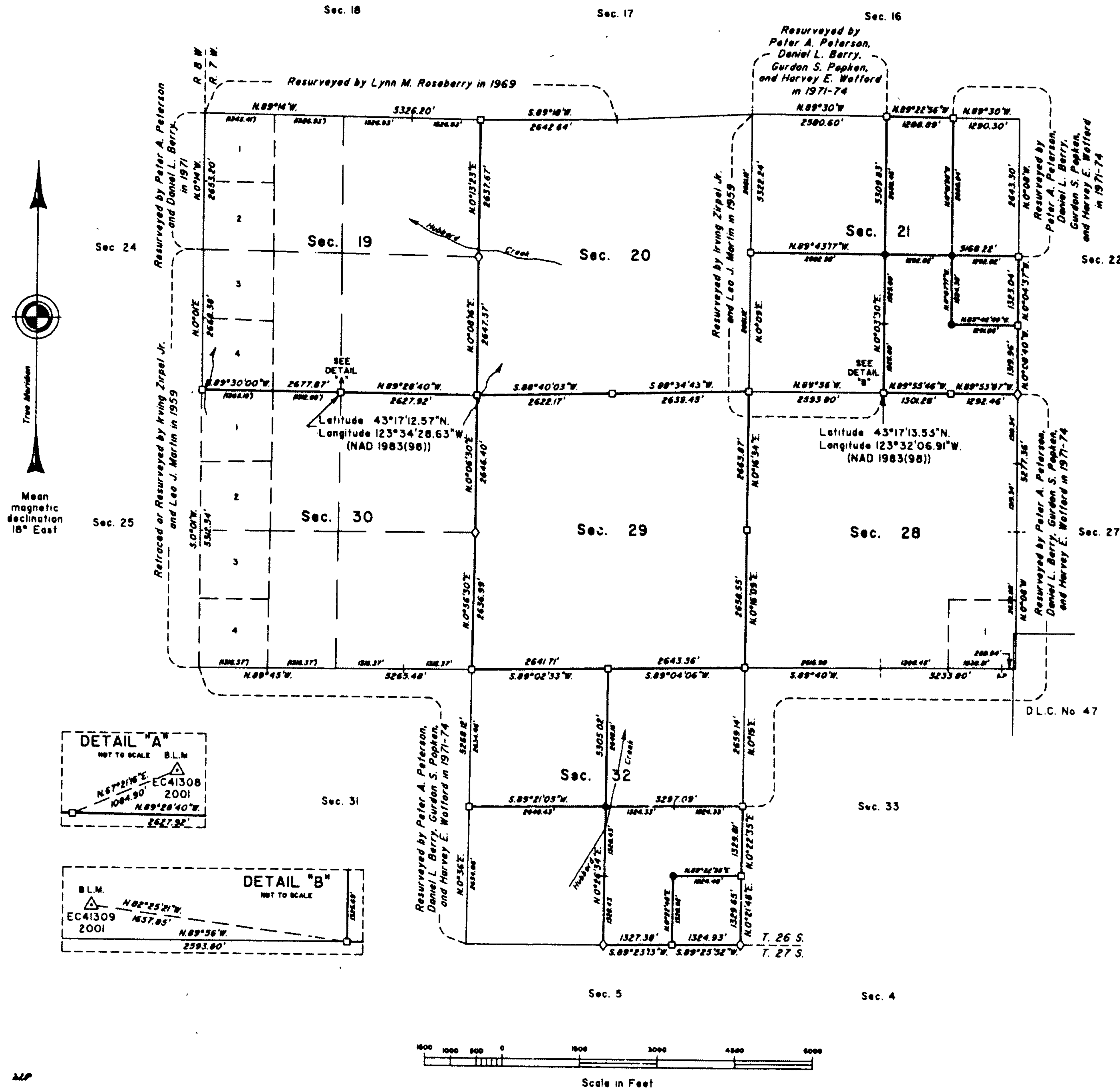
2.0 Right on Callahan Rd.
3.5 Right on BLM Rd. 26-7-33.0
1.0 Left on BLM Rd. 26-7-19.1
2.0 Stop here and walk S. 75 ft. to the station.

Notes

- Please send updated recovery information to: Branch of Geographic Sciences, Cadastral Survey Section (OR-957.1), Bureau of Land Management, P.O. Box 2965, Portland, Oregon, 97208. (503) 808-6132
- All distances in "HOW TO REACH" description are in miles, unless otherwise noted

TOWNSHIP 26 SOUTH, RANGE 7 WEST, OF THE WILLAMETTE MERIDIAN, OREGON

DEPENDENT RESURVEY AND SUBDIVISION OF SECTIONS 21 AND 32



A history of surveys is contained in the field notes.

This plat represents a dependent resurvey of a portion of the south boundary and subdivisional lines, T. 26 S., R. 7 W., Willamette Meridian, Oregon, designed to restore the corners in their true original locations according to the best available evidence, and the subdivision of sections 21 and 32.

Measured distances and directions have been adjusted by Cadastral Measurement Management for Windows (WinCMM), computer software that incorporates a least squares adjustment routine. The adjusted bearings and distances are reported to the nearest second and 0.01 feet.

The lottings and areas are as shown on the plats approved October 22, 1860 and January 14, 1882 and the plat accepted May 12, 1977.

The survey was executed by Timothy J. Moore, Cadastral Surveyor, and Robert H. Browning, Surveying Technician, beginning July 9, 2001, and completed September 12, 2002, pursuant to Special Instructions dated May 31, 2001, under Group Number 1990, Oregon.

Timber in this area consists of fir, cedar, hemlock, oak, alder, madrone, maple, and chinquapin.

The ties to the geodetic control stations are reported as mean bearing and sea level distance.

LEGEND	
◊	Original corner previously remonumented
□	Corner previously established or reestablished
●	Corner established or reestablished this survey

UNITED STATES DEPARTMENT OF THE INTERIOR
BUREAU OF LAND MANAGEMENT
Portland, Oregon September 13, 2004

This plat is strictly conformable to the approved field notes, and the survey, having been correctly executed in accordance with the requirements of law and the regulations of this Bureau, is hereby accepted.

For the Director
Mary J. M. Husted
Chief Cadastral Surveyor of Oregon

