

E-048

28

416

T26S R7W SE 19

4/25/2004

## Control Data Sheet

Bureau of Land Management  
Oregon State Office  
Branch of Geographic Sciences  
Cadastral Survey Section

## Control Station

Station Name: EC 41308  
EC Number: 41308  
County: DOUGLAS  
State: OR  
BLM District: ROSEBURG  
BLM Resource Area: SOUTH RIVER  
Location: T26S, R07W, SEC.19  
Meridian: WILLAMETTE  
Mapping References  
USGS 7 1/2' QUAD: CALLAHAN  
USGS 15' QUAD:  
Group Number: 1990  
Date Occupied: 6/19/2001  
Method: GPS, STATIC  
CARRIER PHASE  
Receiver Type: TRIMBLE 4700  
Baseline Software: TRIMBLE GEOMATICS  
v.1.50  
Vert Shift Software: VERTCON v.1.00

## NAD 83 (1998) Data

Adjustment Software: TRIMBLE GEOMATICS  
v.1.50  
Geoid Computations: GEOID 98 v.1.00  
Latitude: 43° 17' 16.69514"  
Longitude: 123° 34' 15.08936"  
Ellipsoid Height: 514.998 m  
Geoid Separation: -23.477 m  
MSL Elev (NAVD 88): 538.475 m  
NAVD88 - NGVD29: 1.092 m  
Error Ellipse (95%)  
Semi-Major: m  
Semi-Minor: m  
Axis Azimuth:  
Vertical: 0.006 m

## NAD 27 Data

Derivation: CORPSCON v.5.11  
Latitude: 43° 17' 17.2831"  
Longitude: 123° 34' 10.78449"

## Horizontal Reference Stations Utilized

Douglas Co. Surveyor Stations COLONIAL (Order B) and DARLEY (Order A).

## Description

Monumented with a finned aluminum rod, 3/8 in. diam., 70 ins. long, set flush with the surface of the ground, with a BLM aluminum Control Survey cap mkd.

EC 41308

GPS 2001

Station located on E. bank of Dragonfly Pond, witnessed with a metal fence post.

HOW TO REACH: From exit 125 (Garden Valley Blvd.) of Interstate 5 in Roseburg, OR.  
Proceed west on Garden Valley Blvd.

2.0 Left on Melrose Rd.

3.2 Right on Melqua Rd.

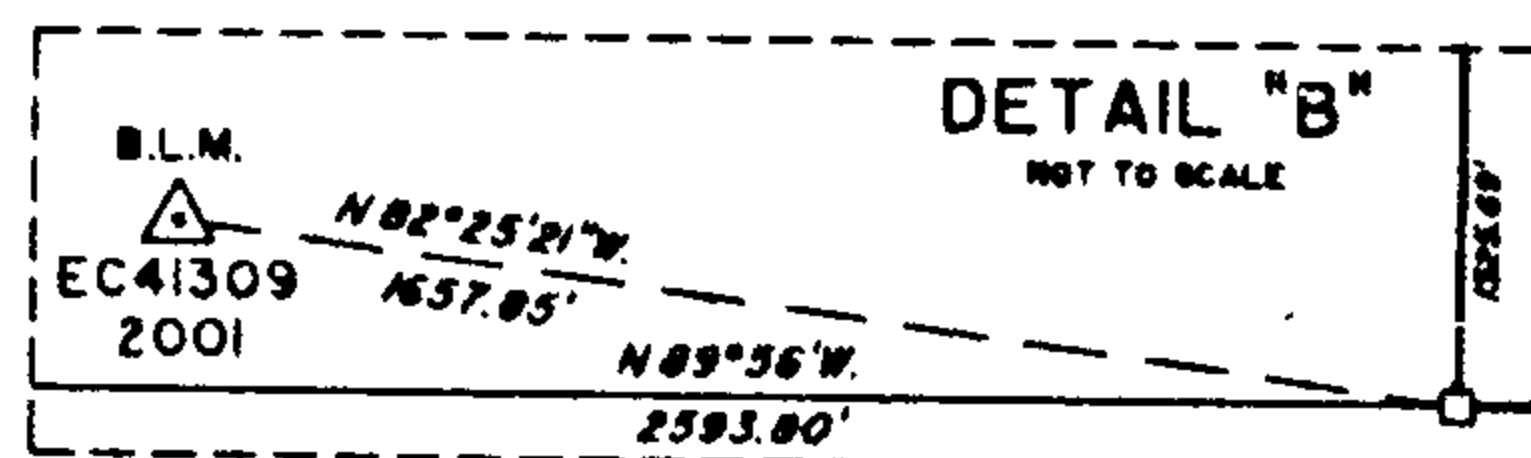
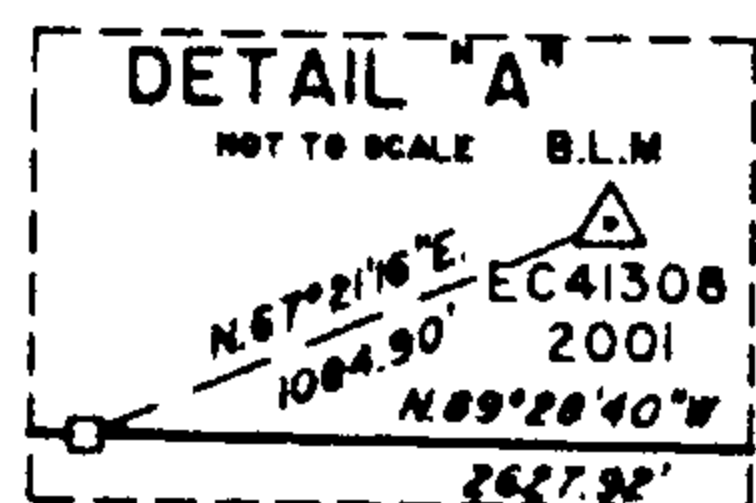
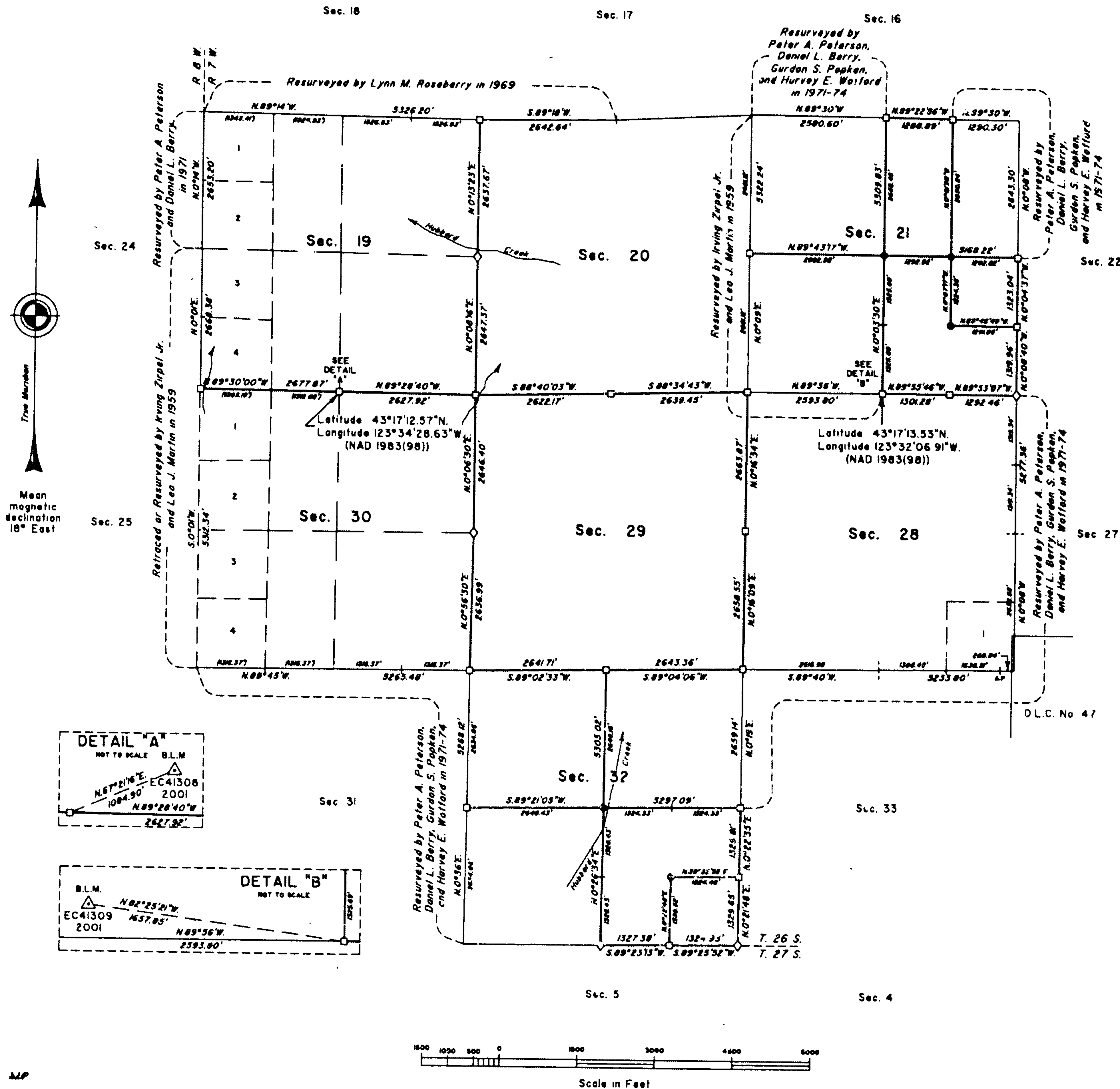
9.6	Left on Hubbard Creek Rd.
9.8	Pavement ends, continue on BLM Rd. 26-7-7.0
2.0	Right on BLM Rd. 26-7-19.0
0.9	Keep left, stay on BLM Rd. 26-7-19.0
1.0	Dragonfly Pond and the station to the west.

**Notes**

- Please send updated recovery information to: Branch of Geographic Sciences, Cadastral Survey Section (OR-957.1), Bureau of Land Management, P.O. Box 2965, Portland, Oregon, 97208. (503) 808-6132
- All distances in "HOW TO REACH" description are in miles, unless otherwise noted

# TOWNSHIP 26 SOUTH, RANGE 7 WEST, OF THE WILLAMETTE MERIDIAN, OREGON

## DEPENDENT RESURVEY AND SUBDIVISION OF SECTIONS 21 AND 32



A history of surveys is contained in the field notes.

This plat represents a dependent resurvey of a portion of the south boundary and subdivisional lines, T. 26 S., R. 7 W., Willamette Meridian, Oregon, designed to restore the corners in their true original locations according to the best available evidence, and the subdivision of sections 21 and 32.

Measured distances and directions have been adjusted by Cederal Measurement Management for Windows (WinCMM), computer software that incorporates a least squares adjustment routine. The adjusted bearings and distances are reported to the nearest second and 0.01 feet.

The lottings and areas are as shown on the plats approved October 22, 1860 and January 14, 1882 and the plat accepted May 12, 1977.

The survey was executed by Timothy J. Moore, Cederal Surveyor, and Robert H. Browning, Surveying Technician, beginning July 9, 2001, and completed September 12, 2002, pursuant to Special Instructions dated May 31, 2001, under Group Number 1990, Oregon.

Timber in this area consists of fir, cedar, hemlock, oak, alder, madrone, maple, and chinquapin.

The ties to the geodetic control stations are reported as mean bearing and sea level distance.

**LEGEND**

- ◊ Original corner previously reannunciated
- Corner previously established or reestablished
- Corner established or reestablished this survey

UNITED STATES DEPARTMENT OF THE INTERIOR  
BUREAU OF LAND MANAGEMENT

Portland, Oregon                      September 13, 2004

This plat is strictly conformable to the approved field notes, and the survey, having been correctly executed in accordance with the requirements of law and the regulations of this Bureau, is hereby accepted.

For the Director  
*Mary J. M. Hunter*  
Chief Cederal Surveyor of Oregon

