

PLSS 040030

OFFICE OF THE  
DOUGLAS COUNTY SURVEYOR

Station: SW Corner DLC 40 T 23 S, R 5 W, Sec 4

Set By (Agency): Haines LS# 239

Date Set: 1967

Recovered By \_\_\_\_\_

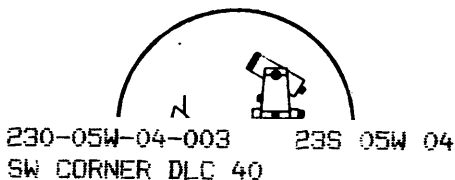
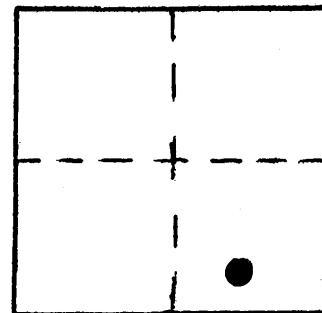
Date Recovered \_\_\_\_\_

Recovered By \_\_\_\_\_

Date Recovered \_\_\_\_\_

Recovered By \_\_\_\_\_

Date Recovered \_\_\_\_\_



NAD 714733.40 4182110.87  
83 43°35'38" 123°17'27"

VERTICAL CONTROL

Elevation: \_\_\_\_\_ NGS Line # \_\_\_\_\_ USGS Line # \_\_\_\_\_ OSHD Line # \_\_\_\_\_

Precision: \_\_\_\_\_ Agency: \_\_\_\_\_ Proj. # \_\_\_\_\_ Date: \_\_\_\_\_

HORIZONTAL CONTROL

*NAD 27*

South Zone State Plane Coordinates: Y(Northing) 714,768.09 X(Easting) 1,261,150.56

Precision: 1/5,000 Agency: DCSO Proj. # 2008 Date: 1980

Approximate Geographic Position: Latitude 43°35'39" Longitude 123°17'22"

DESCRIPTION and TO REACH

SKETCH

Monument is a 5/8" iron rod. See Douglas County Surveyor Corner Renewal Records for more information.

Reference Marks:

Note: For further information, contact the Douglas County Surveyor's Office, Room 205 Douglas County Justice Building, Roseburg, OR 97470. Phone 440-4278. Douglas County residents outside the Roseburg calling area, dial toll free 1-800-452-0991.