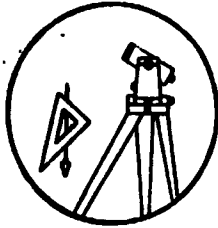
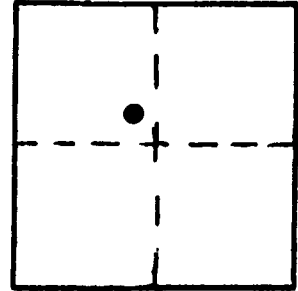


OFFICE OF THE  
DOUGLAS COUNTY SURVEYOR



0/0 #071

Station: 26-1 T 27 S, R 6 W, Sec 14  
 Set By (Agency): CITY (RSBG)  
 Date Set: ?  
 Recovered By RS, JP  
 Date Recovered 8/26/83  
 Recovered By RWS-SIF  
 Date Recovered 2000  
 Recovered By \_\_\_\_\_  
 Date Recovered \_\_\_\_\_



VERTICAL CONTROL NGVD 29 CORCON 6 NAVD 88 436.85 FT  
 Elevation: ~~433.41~~ 433.38 NGS Line # \_\_\_\_\_ USGS Line # \_\_\_\_\_ OSHD Line # \_\_\_\_\_  
 Precision: 3rd Agency: CITY (RSBG) Proj. # 66/38 Date: 2000  
DCSO

HORIZONTAL CONTROL  
 South Zone State Plane Coordinates: Y(Northing) \_\_\_\_\_ X(Easting) \_\_\_\_\_  
 Precision: \_\_\_\_\_ Agency: \_\_\_\_\_ Proj. # \_\_\_\_\_ Date: \_\_\_\_\_  
 Approximate Geographic Position: Latitude 43° 13' 22.2" Longitude 123° 22' 32.4"  
(83) 43° 13' 21.6" 123° 22' 36.6"

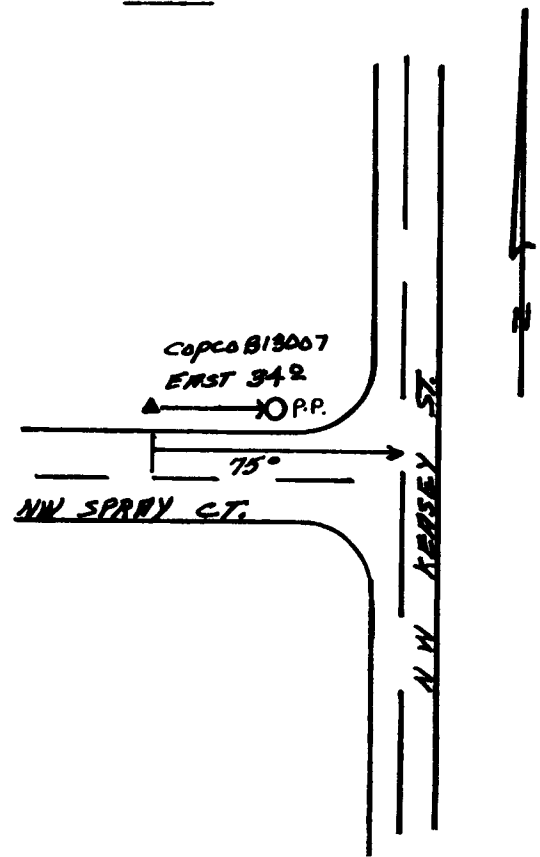
DESCRIPTION and TO REACH

DESCRIPTION:

A disk stamped "26-1" set in a  
6 in. square concrete post 3 in.  
below ground.

TO REACH:

From the intersection of NW Keasey St.  
and NW Spray Ct. proceed westerly along  
NW Spray Ct. 75 ft. to monument on right.



Reference Marks:

Note: For further information, contact the Douglas County Surveyor's Office, Room 205  
Douglas County Justice Building, Roseburg, OR 97470. Phone 440-4278. Douglas  
County residents outside the Roseburg calling area, dial toll free 1-800-452-0991.