

LEGEND:

- Found 5/8" dia. I.Rod unless noted.
- Set 5/8" x 30" reinforcing rod with yellow plastic cap marked, "LAND MARK"2285".
- Calculated Point

RECORD INFORMATION

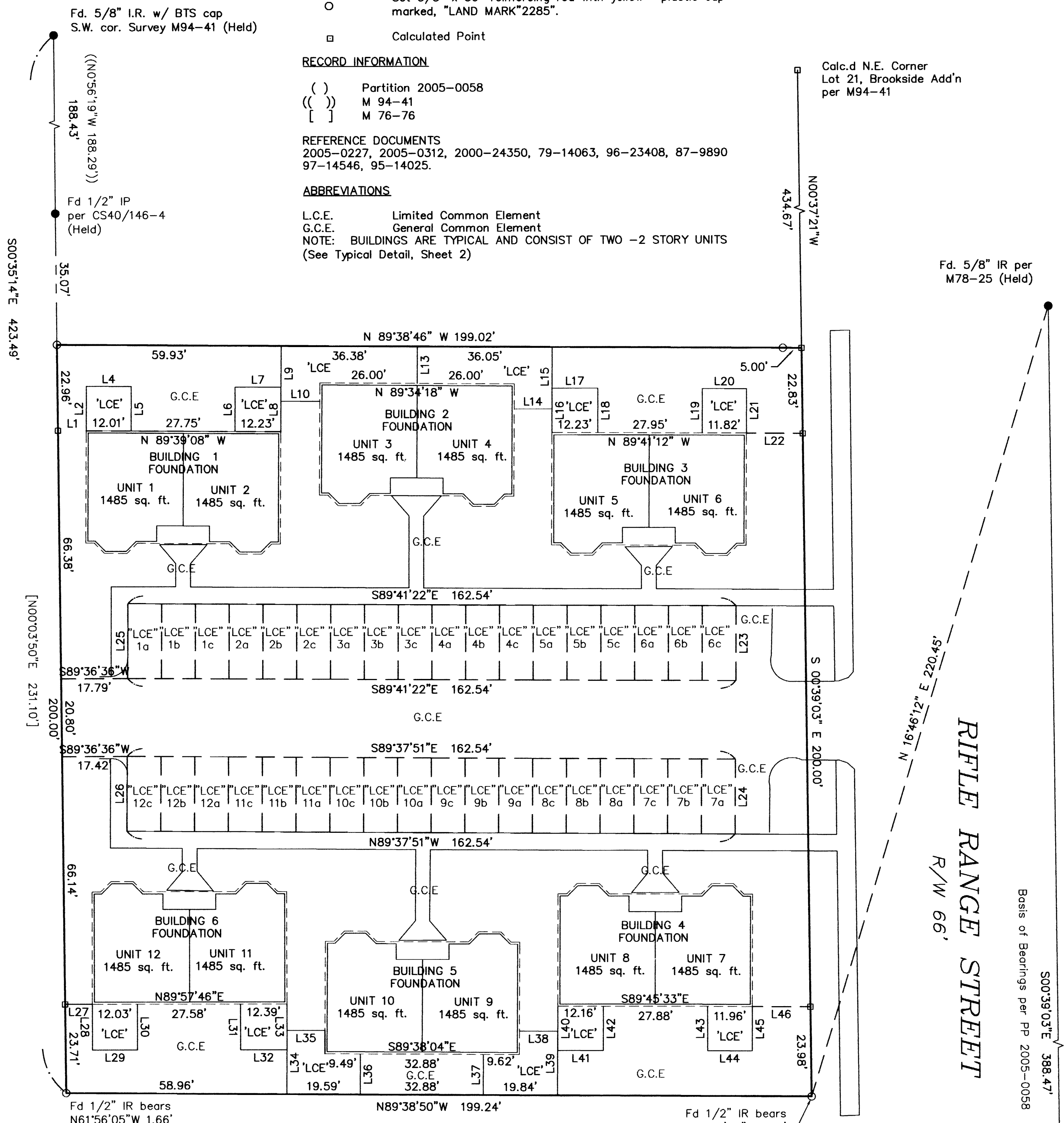
- () Partition 2005-0058
- (()) M 94-41
- [] M 76-76

REFERENCE DOCUMENTS

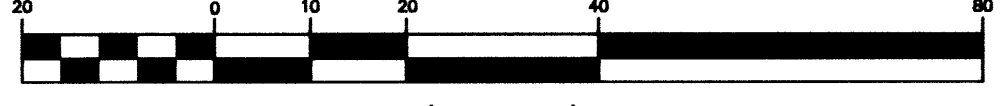
2005-0227, 2005-0312, 2000-24350, 79-14063, 96-23408, 87-9890
97-14546, 95-14025.

ABBREVIATIONS

- L.C.E. Limited Common Element
- G.C.E. General Common Element
- NOTE: BUILDINGS ARE TYPICAL AND CONSIST OF TWO -2 STORY UNITS
(See Typical Detail, Sheet 2)



GRAPHIC SCALE



LINE	LENGTH	BEARING
	5.36	N00°25'42"E
L1	7.54	S89°39'08"E
L2	11.88	N00°20'52"E
L4	12.01	N89°39'08"W
L5	11.88	N00°20'52"E
L6	11.88	N00°20'52"E
L7	12.23	N89°39'08"W
L8	11.88	N00°20'52"E
L9	14.79	S00°25'42"W
L10	10.38	N89°34'18"W
L13	9.88	N00°25'42"E
L14	10.05	S89°34'18"E
L15	15.88	N00°25'42"E
L16	11.85	N00°18'48"E
L17	12.23	N89°41'12"W
L18	11.85	N00°18'48"E
L19	11.85	N00°18'48"E
L20	11.82	N89°41'12"W
L21	11.85	N00°18'48"E
L22	15.06	S89°41'12"E
L23	20.00	N00°18'38"E

LINE	LENGTH	BEARING
L24	20.00	N00°22'09"E
L25	20.00	N00°18'38"E
L26	20.00	N00°22'09"E
L27	7.29	N89°57'46"E
L28	12.23	S00°02'14"E
L29	12.01	N89°57'46"E
L30	12.23	N00°02'14"W
L31	12.23	N00°02'14"W
L32	12.39	N89°57'46"E
L33	12.23	N00°02'14"W
L34	17.05	S00°21'56"W
L35	10.10	N89°56'55"W
L36	10.89	S00°21'56"W
L37	10.88	N00°21'56"E
L38	10.22	S89°38'04"E
L39	17.13	S00°21'56"W
L40	11.84	S00°14'27"W
L41	12.16	S89°45'33"E
L42	11.84	S00°14'27"W
L43	11.84	N00°14'27"E
L44	11.96	S89°45'33"E
L45	11.84	N00°14'27"E
L46	15.54	S89°45'33"E

DECLARATION RECORDING NO. 2006-014649
BYLAWS RECORDING NO. 2006-014650

Sheet 1 of 3
WATERSTONE CROSSING
CONDOMINIUMS
In Lot 21, First Addition of Brookside, in NW 1/4, Sec. 20, T.27 S. R. 5 W. W.M., City of Roseburg, Douglas Co., Oregon
January 31, 2006
FOR: Pacific Housing Management, L.L.C.
P.O. Box 2107
Roseburg, OR 97470

REGISTERED PROFESSIONAL LAND SURVEYOR
Mark A. Heimbürger
OREGON
JULY 16, 1987
MARK A. HEIMBURGER
2287
RENEWS JUNE 30, 2007

LM LAND MARK SURVEYING, INC.
3329 N.E. STEPHENS ST.
ROSEBURG, OREGON 97470
TEL. (541) 677-9400
FAX (541) 677-9401
LM Proj. No. 2005-0070