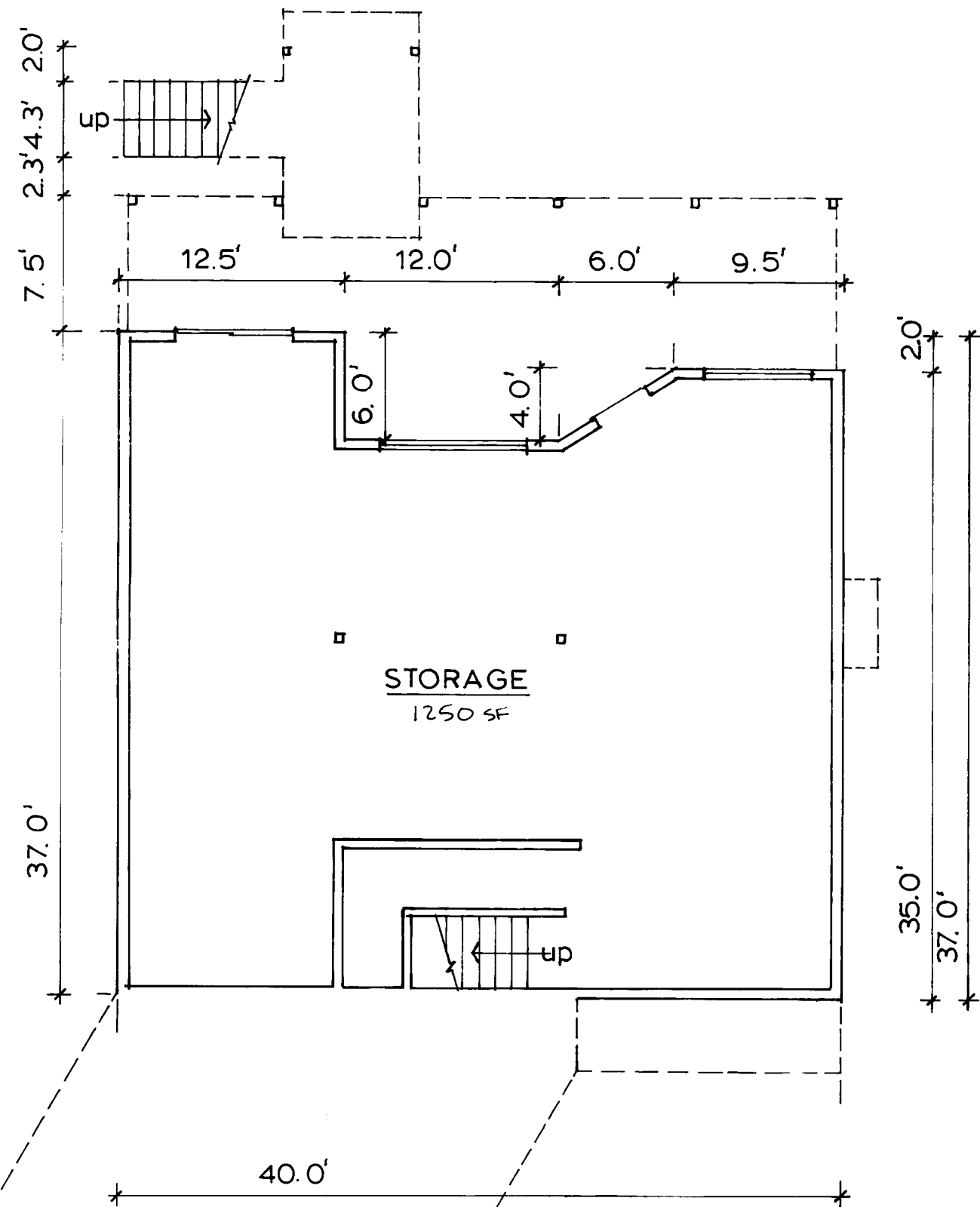


EDGEWATER ESTATES CONDOMINIUM

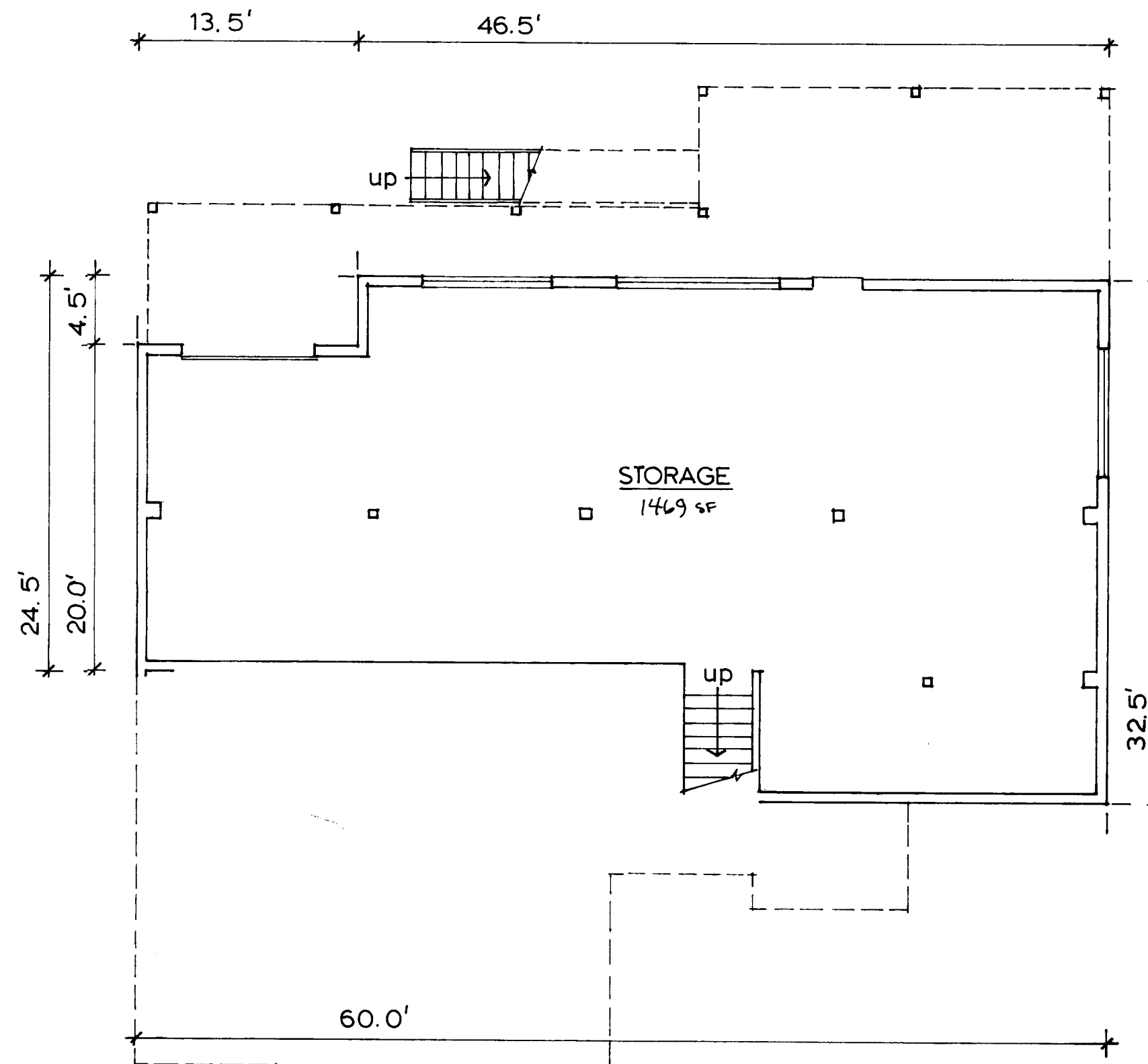
Supplemental Declaration PHASE IV UNITS 8 & 9

BEING A PORTION OF GOVERNMENT LOT 4 IN THE NW 1/4 OF SECTION 1 TOWNSHIP 22 SOUTH RANGE 11 W W M DOUGLAS COUNTY OREGON



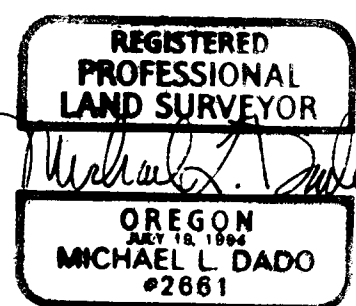
Unit 8
BASEMENT FLOOR PLAN

scale 1/8" = 1'-0"



Unit 9
BASEMENT FLOOR PLAN

PREPARED BY
MICHAEL L. DADO SURVEYING INC.
2047 GRANT STREET
NORTH BEND, OR. 97459
(541) 756-2281



2000-20086

2000-20086

2000-20086
SHEET 5 OF 7
00-06-333