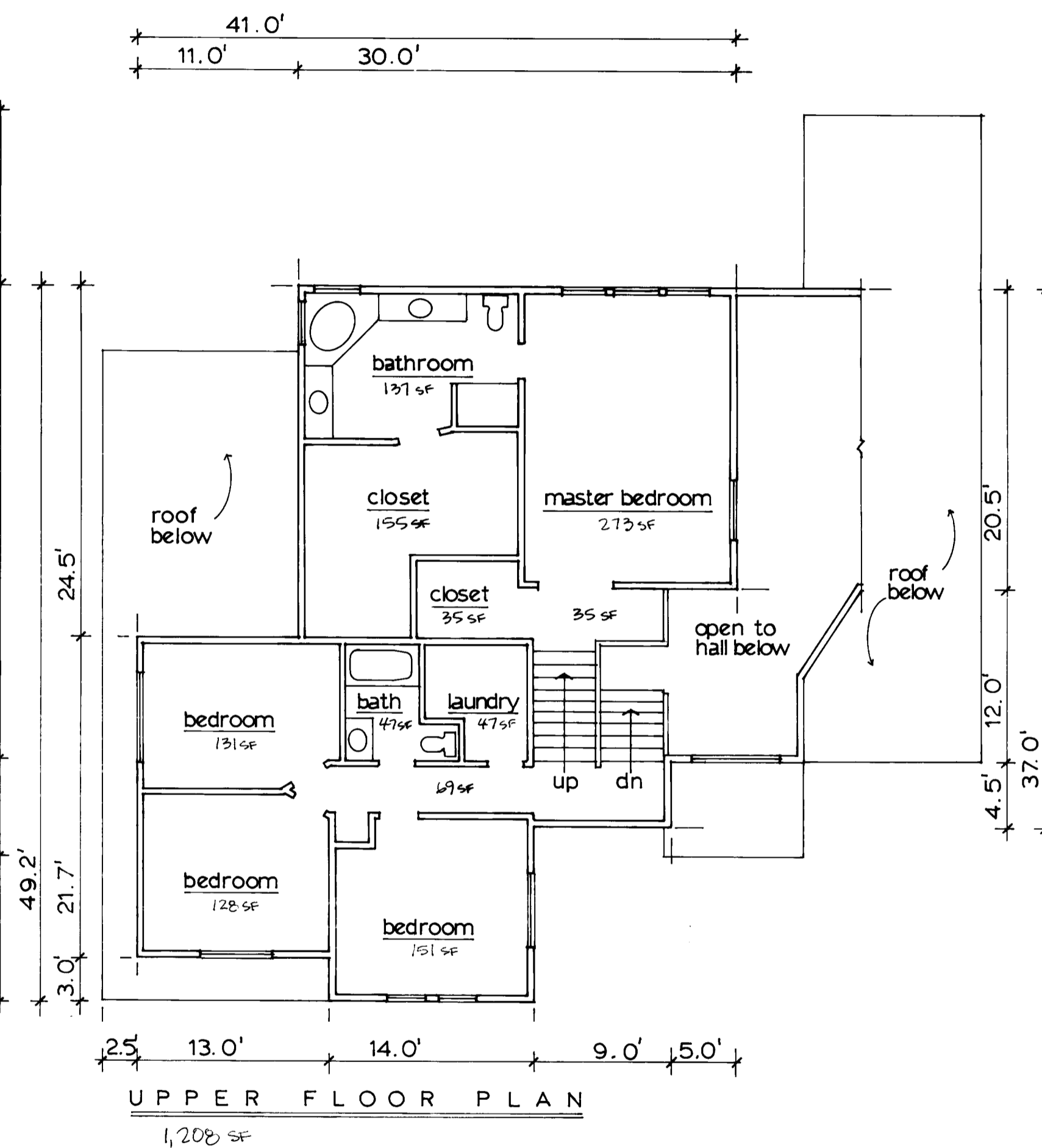
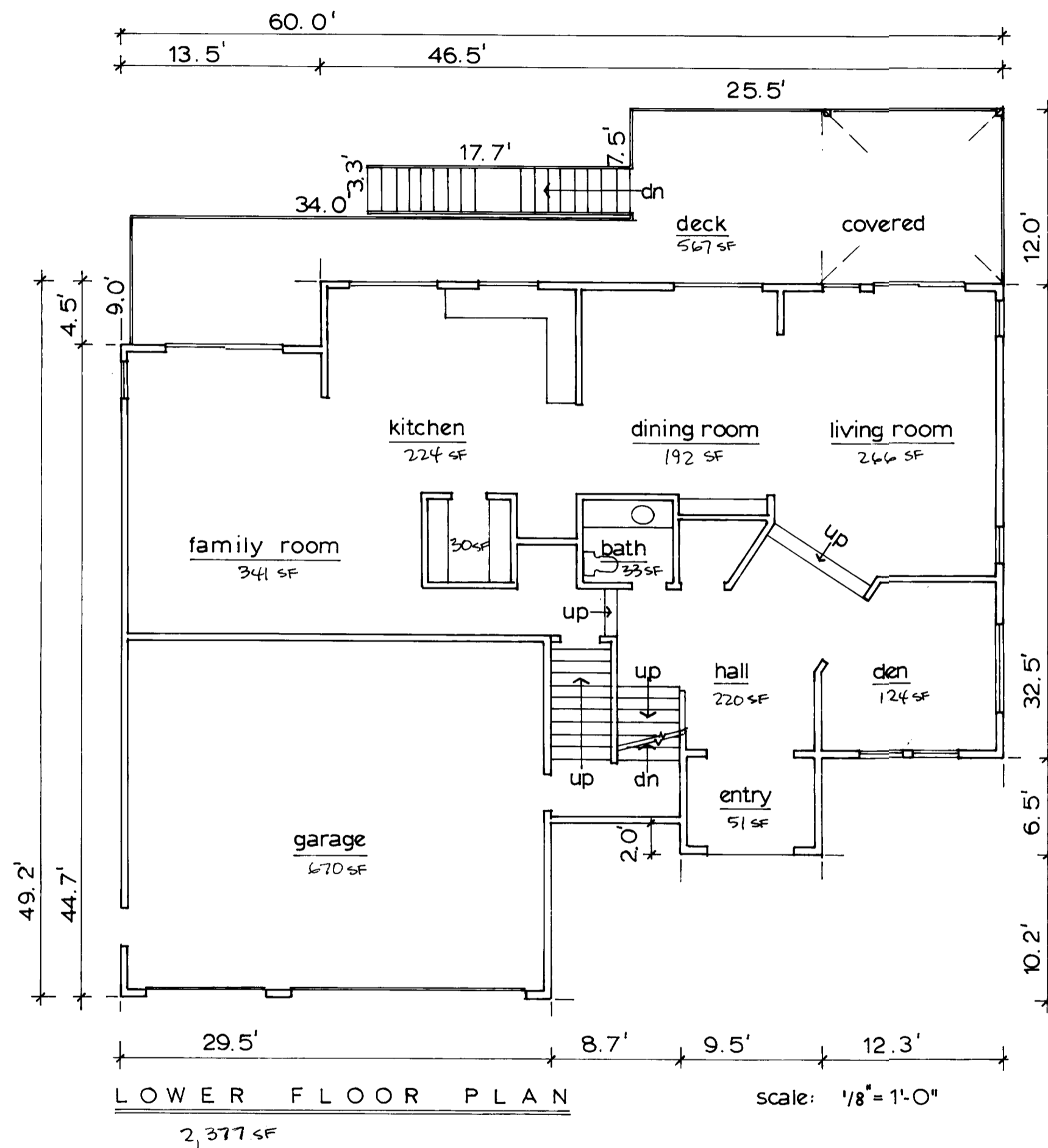


EDGEWATER ESTATES CONDOMINIUM

Supplemental Declaration PHASE IV Unit 9

BEING A PORTION OF GOVERNMENT LOT 4 IN THE NW 1/4 OF SECTION 1 TOWNSHIP 22 SOUTH RANGE 11 W.W.M. DOUGLAS COUNTY OREGON



CONDOMINIUM VOL. 1 PAGE 18 D

CONDOMINIUM VOL. 1 PAGE 18 D



PREPARED BY
 MICHAEL L. DADO SURVEYING INC.
 2047 GRANT STREET
 NORTH BEND, OR. 97459
 (541) 756-2281

2000-20086

2000-20086

2000-20086
 SHEET 4 OF 7
 00-06-333