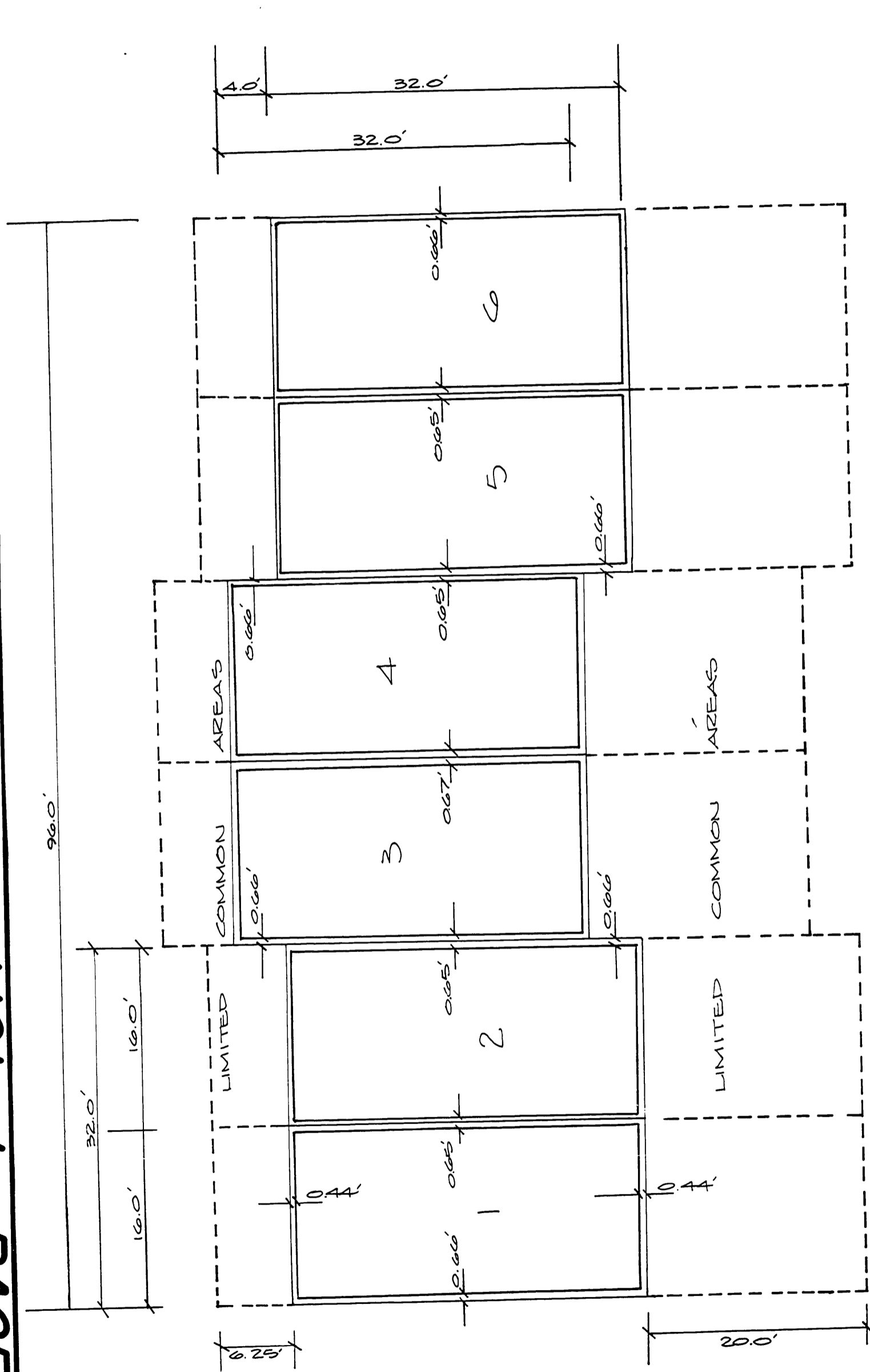


# BRANDY BAR LANDING

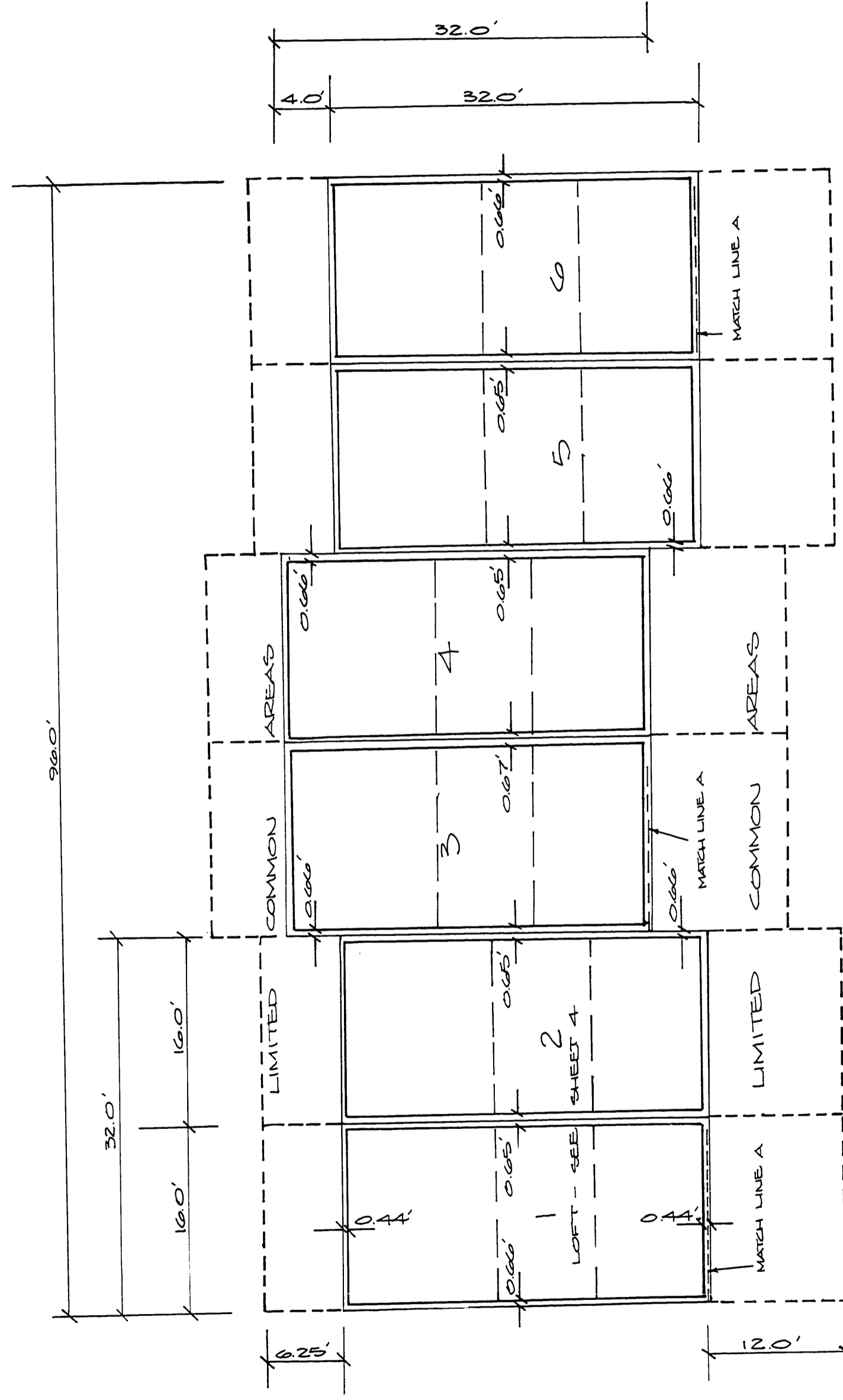
PHASES IV, V, VI & VII - A CONDOMINIUM

LYING IN GOVERNMENT LOTS 8, 9 AND 10 IN S 1/2, SECTION 6, T22S, R10W, W.M.



—TYPICAL BUILDING CONSISTING OF 6 UNITS—  
SCALE: 1" = 10'

DIMENSIONS SHOWN HEREON ARE TO DETERMINE UNIT SIZE ONLY; CONFIGURATION OF THE UNITS AS SHOWN ON PAGE 1 HEREOF. EXTERIOR DIMENSIONS SHOWN ARE TO THE CENTERLINE OF THE STUDS.



—TYPICAL BUILDING CONSISTING OF 6 UNITS—  
SCALE: 1" = 10'

DIMENSIONS SHOWN HEREON ARE TO DETERMINE UNIT SIZE ONLY; CONFIGURATION OF THE UNITS AS SHOWN ON PAGE 1 HEREOF. EXTERIOR DIMENSIONS SHOWN ARE TO THE CENTERLINE OF THE STUDS.

STATE OF OREGON ) ss  
COUNTY OF DOUGLAS)

I, Doris Wadsworth, County Clerk of Douglas County, Oregon, do hereby certify that the within copy of plat has been by me compared with the original thereof and that it is an exact copy of the whole thereof as the same appears on file in my office and custody.

Witness my hand and seal this 16<sup>th</sup> day of Dec., 1980.

Doris L. Wadsworth  
County Clerk

STATE OF OREGON ) ss  
COUNTY OF DOUGLAS)

I, Donald A. Bentz, being duly sworn, depose and say that I am the surveyor who made the survey and prepared the final map of "BRANDY BAR LANDING, PHASES IV, V, VI, & VII" and that the foregoing tracing is an exact copy of the map thereof.

Subscribed and sworn to before me this 12<sup>th</sup> day of Dec., 1980.

Donald A. Bentz, L.S. #837  
County Clerk