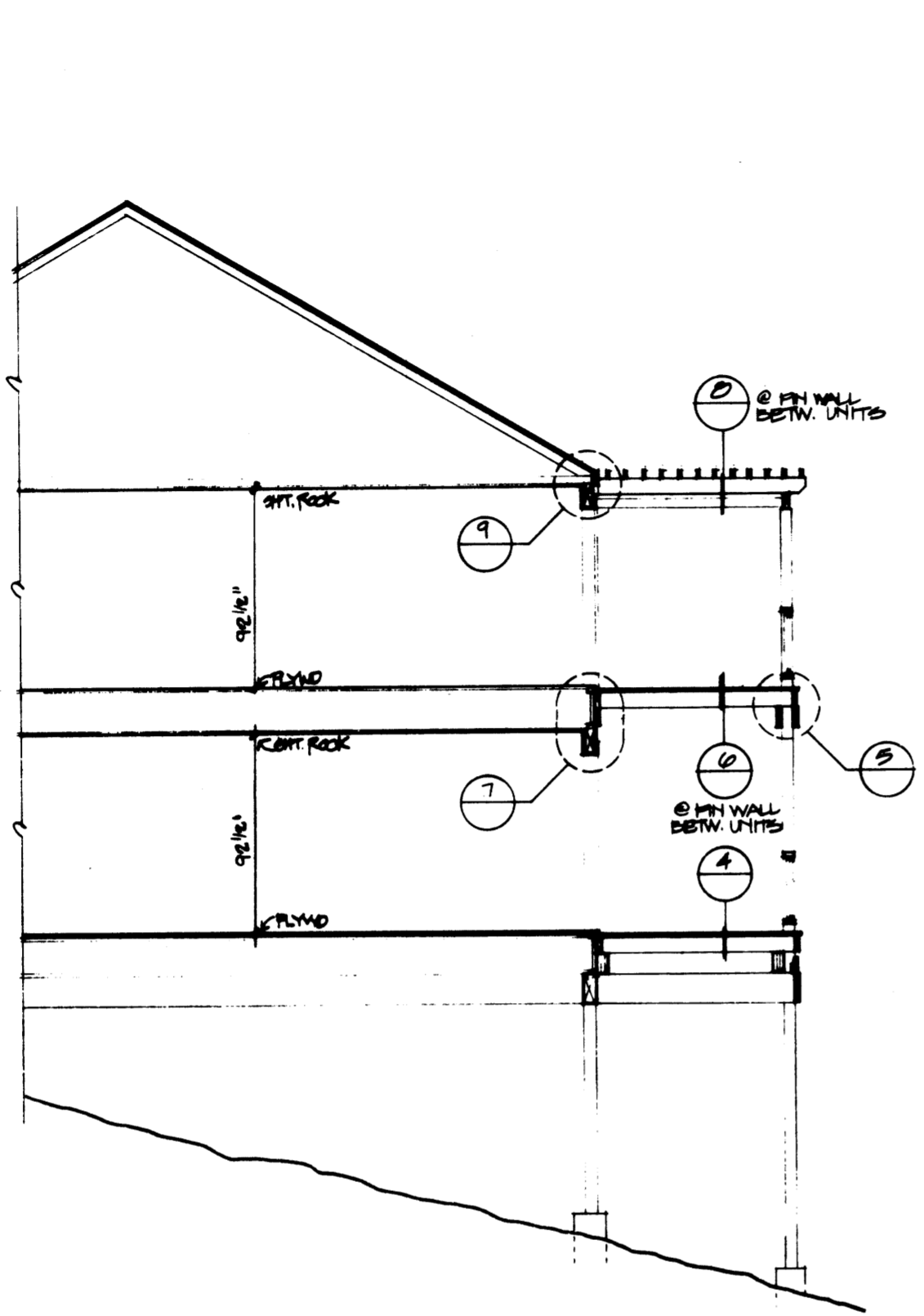
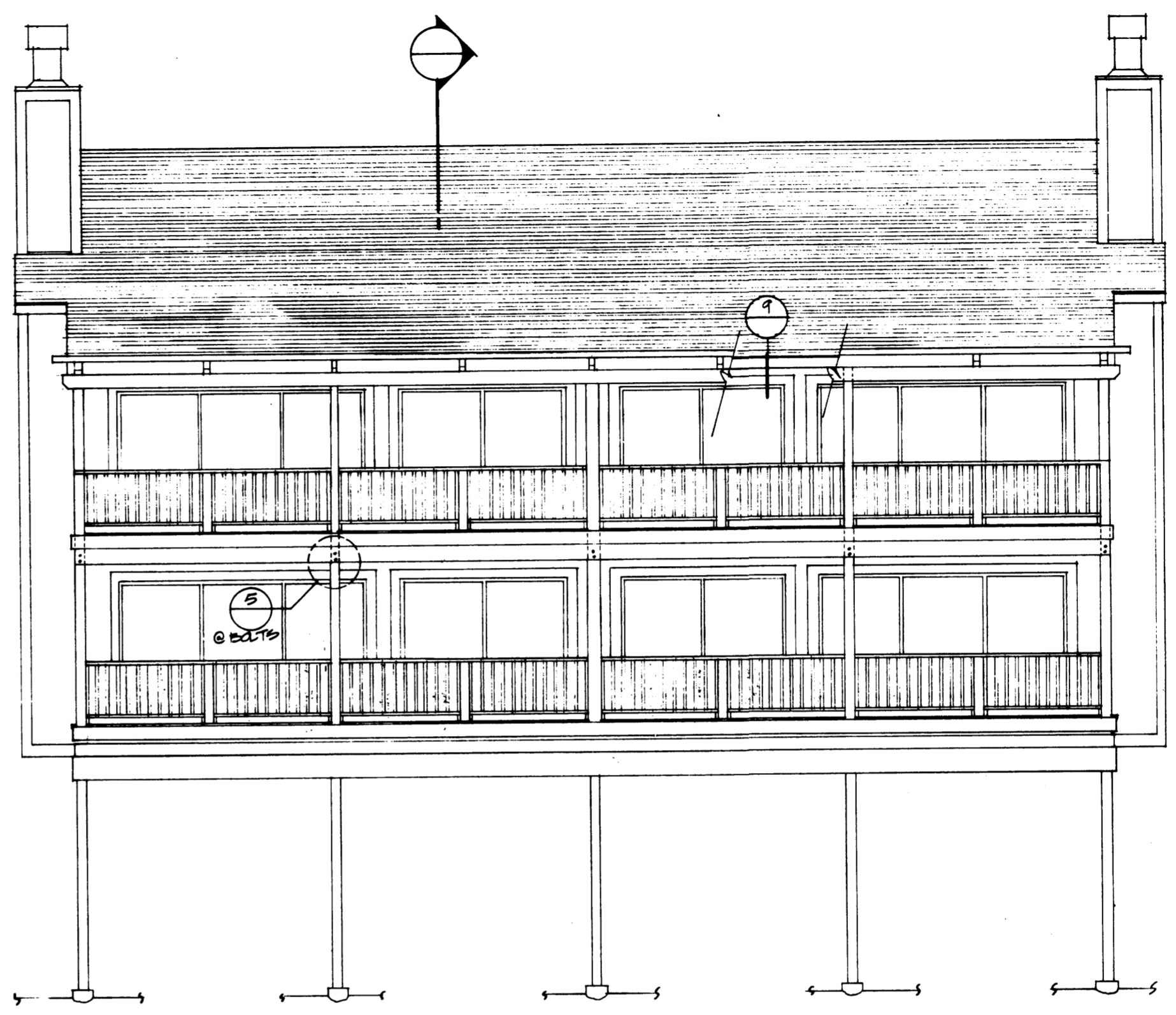


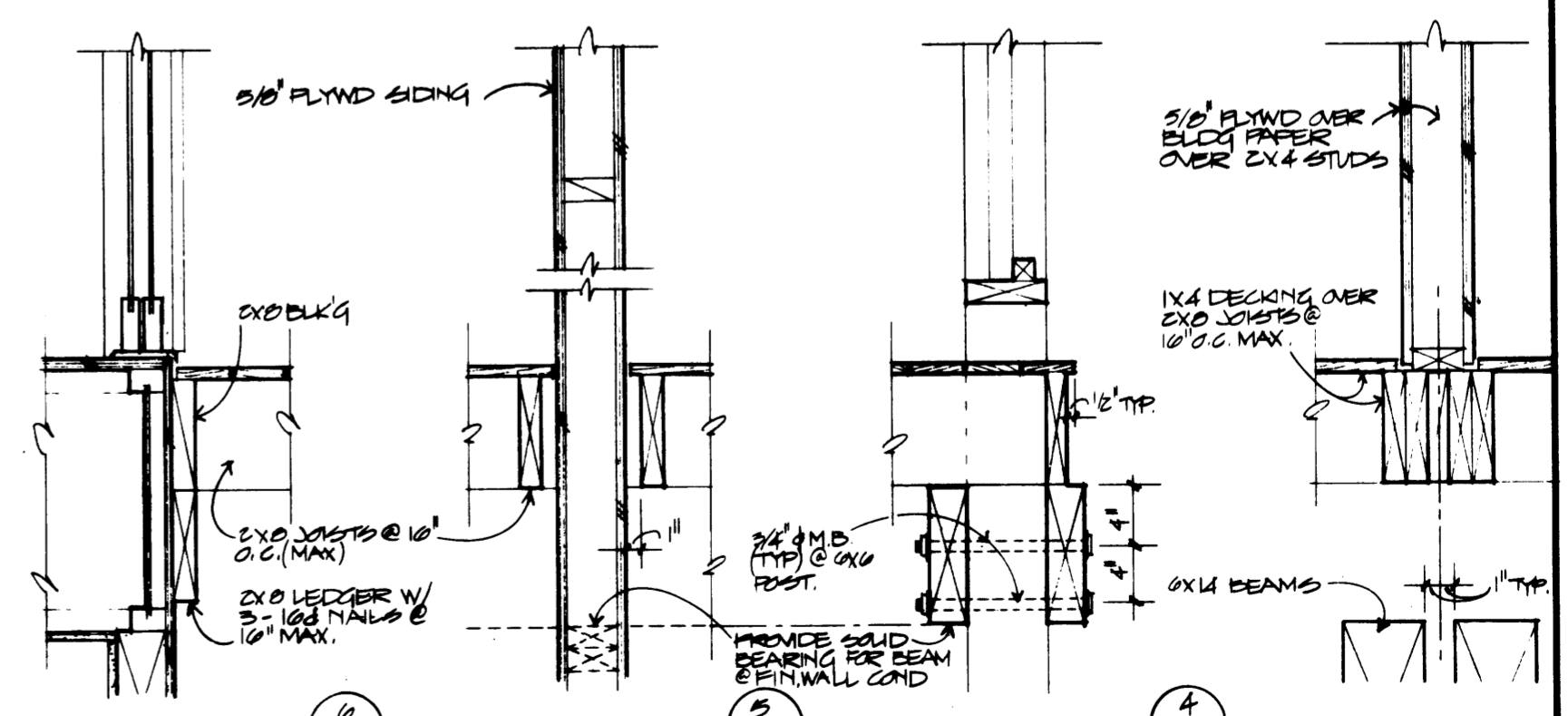
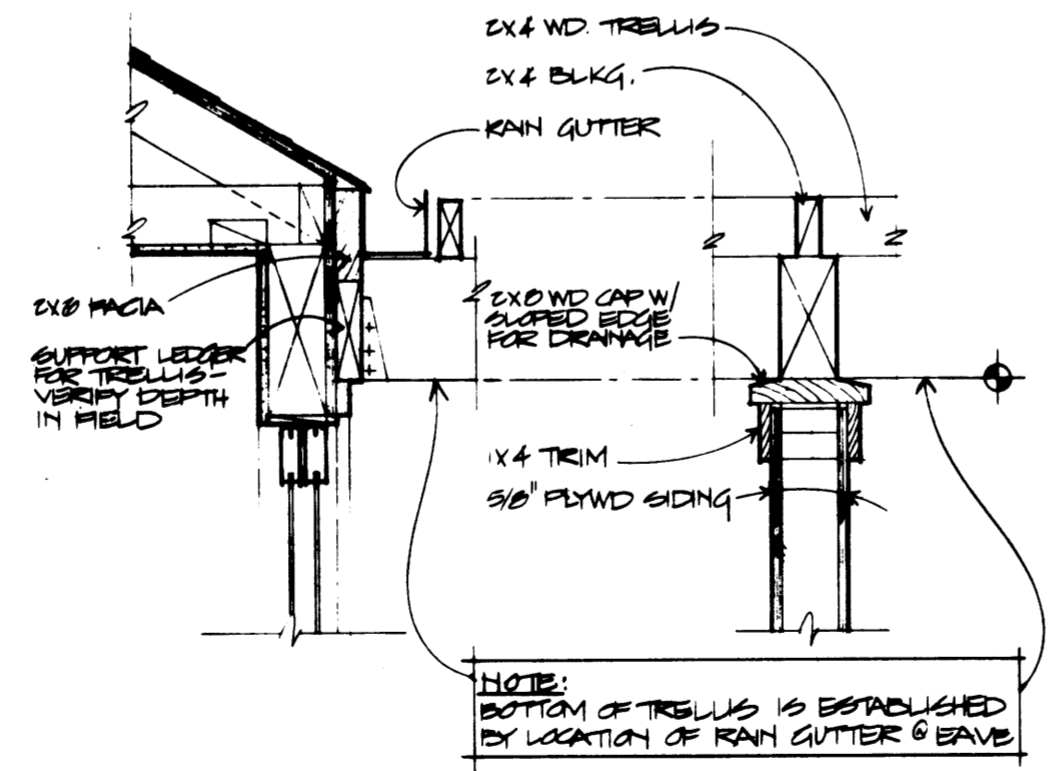
REVISIONS	BY



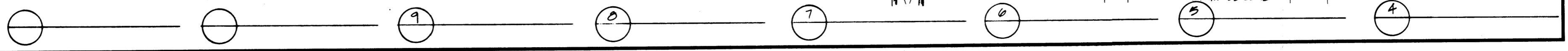
2 PARTIAL SECTION @ "C" UNIT DECK



1 REAR ELEV. @ "C" UNIT UNITS 304 24025



STATE OF OREGON }
 COUNTY OF DOUGLAS } SS
 I, DORIS L. WADSWORTH, COUNTY CLERK OF DOUGLAS COUNTY, OREGON, DO HEREBY CERTIFY THAT THE WITHIN COPY OF PLAT HAS BEEN COMPARED BY ME WITH THE ORIGINAL THEREOF, & THAT IT IS AN EXACT COPY OF THE WHOLE THEREOF, AS THE SAME APPEARS ON FILE IN MY OFFICE & CUSTODY.
 WITNESS MY HAND & OFFICIAL SEAL THIS 21st DAY OF July, 1978
Doris L. Wadsworth



SPYGLASS
 ROOSEVELT, OREGON (UNITS 3-4 24-25)

Scale
 Date
 Drawn
 by
 ABC/1