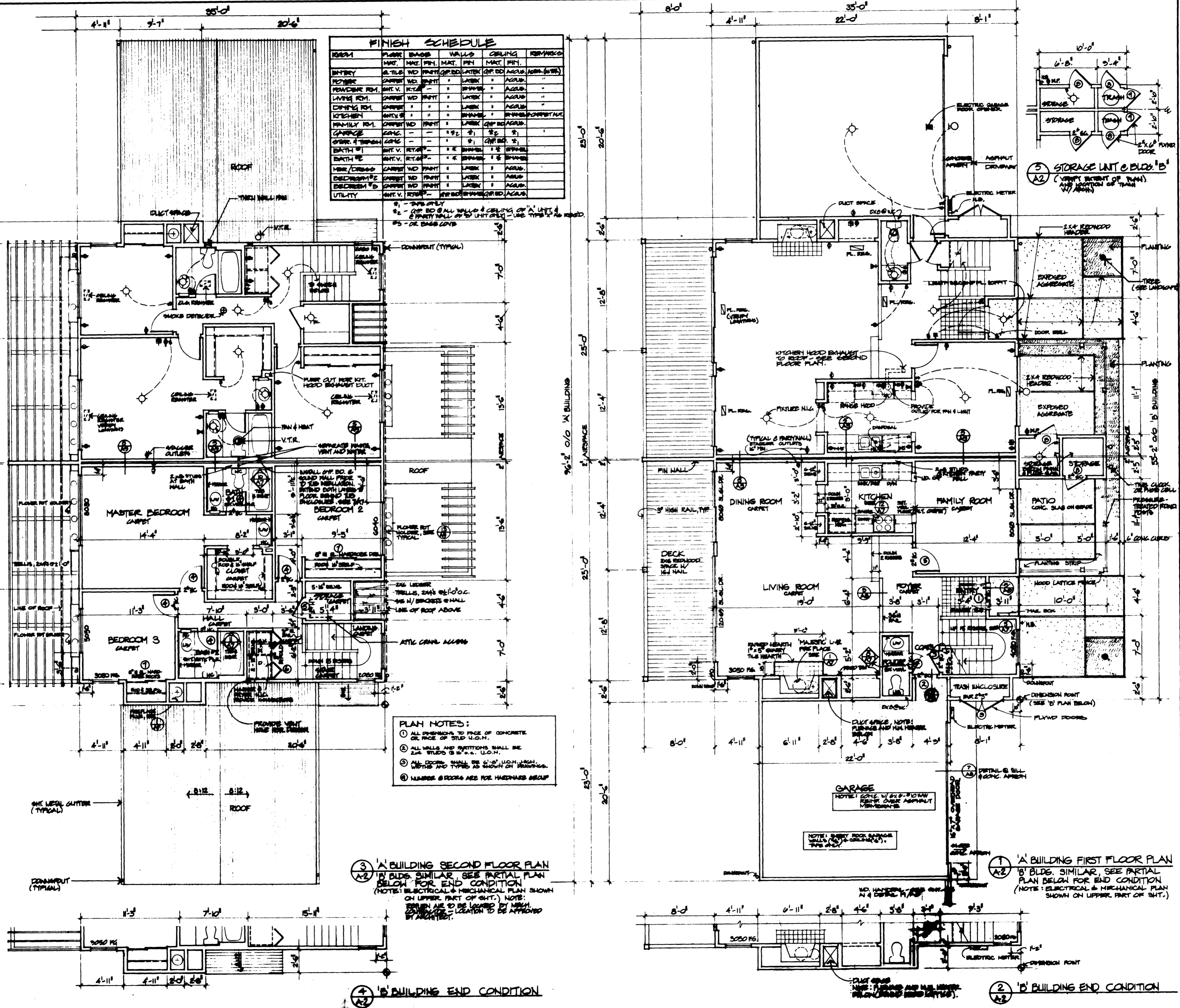


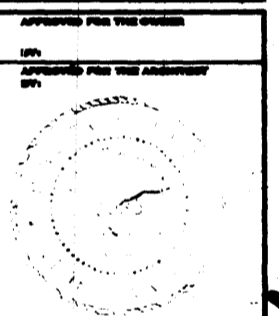
I, DORIS L. WADSWORTH, COUNTY CLERK OF DOUGLAS COUNTY, OREGON, DO HEREBY CERTIFY THAT THE WITHIN COPY OF PLAT HAS BEEN COMPARED BY ME WITH THE ORIGINAL THEREOF, & THAT IT IS AN EXACT COPY OF THE WHOLE THEREOF, AS THE SAME APPEARS ON FILE IN MY OFFICE & CUSTODY.

WITNESS MY HAND & OFFICIAL SEAL THIS 24th DAY OF May, 1978

*Doris L. Wadsworth*



SPYGLASS  
ROSEBURG, OREGON  
DEVELOPER: OAK PARK VILLAGE GOLF  
ARCHITECT: BACKEN ARRIIONI & ROSS INC.



REVISIONS

NO.	DATE	DESCRIPTION

7105  
JLT  
1 APR 77  
1/4" = 1'-0"

FLOOR PLANS