

Highland Park

REGISTERED PROFESSIONAL LAND SURVEYOR
ROMANSO E. WARE
OREGON NOV. 16, 1978
ROMANSO E. WARE 1005

A Condominium Development

Lying in Block 1, Cloverdale Addition
Section 18, T27S, R5W, W.M.

Notes:

1. Each numbered unit is composed of the apartment bearing such number.
2. Boundary lines of each apartment are the interior unfinished surfaces of the ceilings, floors, and perimeter walls thereof.
3. All conduits and wire to outlets and all other utility lines to outlets, regardless of location, constitute part of the common area.
4. All land and all portions of this map not within any units are parts of the common area.
5. All bearing walls located within an apartment constitute parts of the common area to the finished surface of said walls.
6. The owner of each unit shall own an undivided interest in the common areas.
7. Elevations shown are based on City of Roseburg T.B.M. described as the Southwest bolt on the Kabo-Wash sign on Garden Valley Blvd. Elevation projected by City of Roseburg from a U.S.C. & G.S. Benchmark.
8. Elevations of units are given at the unfinished floor level.

- — Set 5/8" iron rod
- — Fd. monument

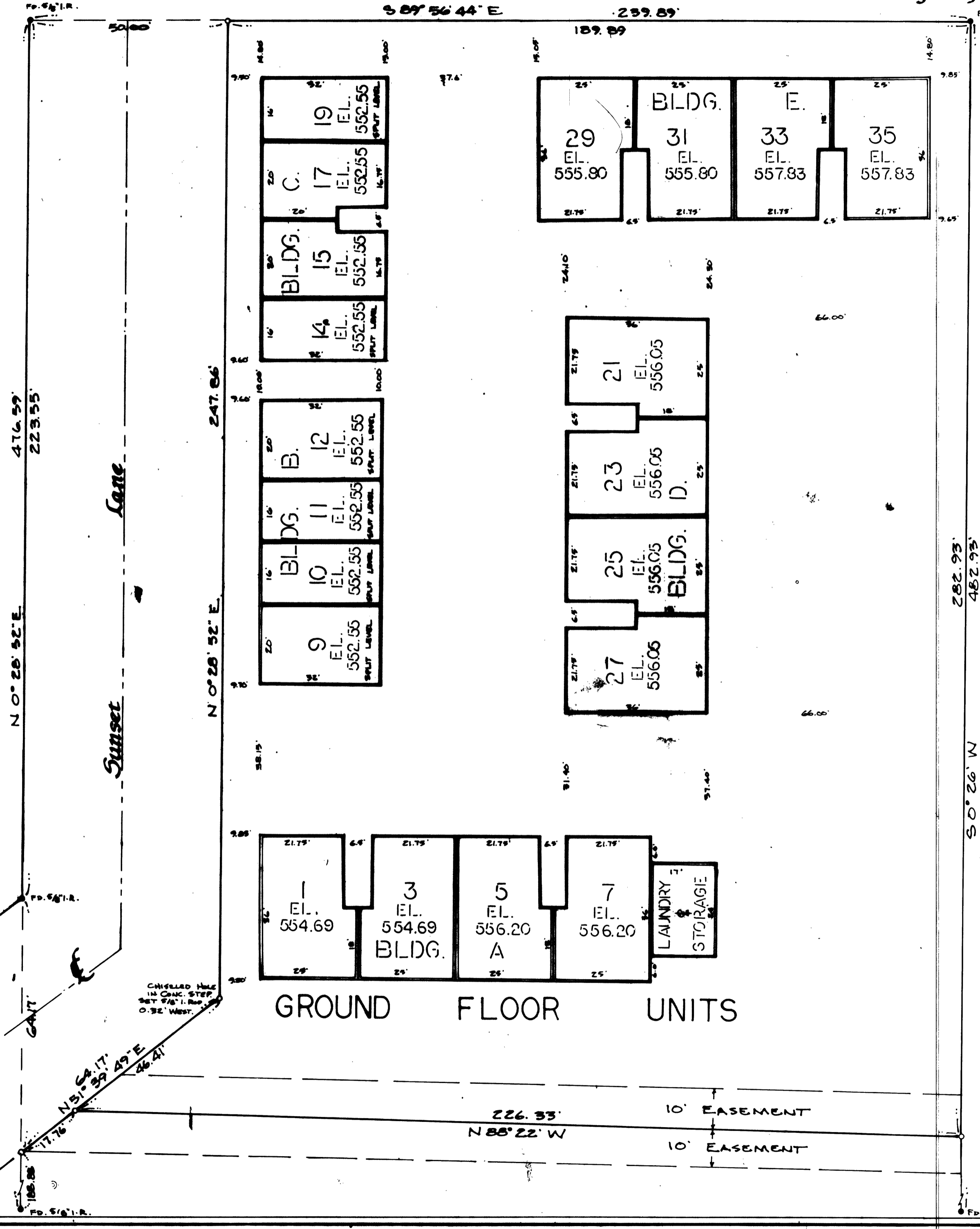
Approved by Douglas County Assessor on the 3 day of February, 1978.

William M. Woods
Douglas County Assessor

Filed by Douglas County Clerk on the 3rd day of Feb, 1978.

Doris L. Wadsworth
Douglas County Clerk
by *Mary El. Best*, Deputy

Scale: 1"=20'



GROUND FLOOR UNITS

STATE OF OREGON)
 COUNTY OF DOUGLAS)
 I, DORIS L. WADSWORTH, COUNTY CLERK OF DOUGLAS COUNTY, OREGON, DO HEREBY CERTIFY THAT THE FOREGOING COPY OF MAP HAS BEEN CONFIRMED BY ME WITH THE ORIGINAL RECORD, & THAT IT IS AN EXACT COPY OF THE WHOLE THEREOF, AS THE SAME APPEARS TO ME BY MY OFFICE & CUSTODY.

WITNESSED BY HAND & OFFICIAL SEAL THIS 13 DAY OF Feb, 1978

Doris L. Wadsworth

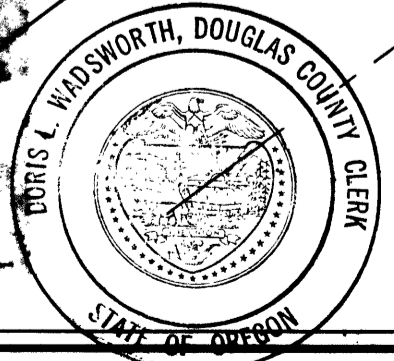


Exhibit A and C

VOL. 1 PAGE 3A
CONDOMINIUM
FOR RECORD BEARINGS & DISTANCES
SEE N 52-61
BASE BEARING - SEE N 52-61
282.93'
482.93'
50° 26' W