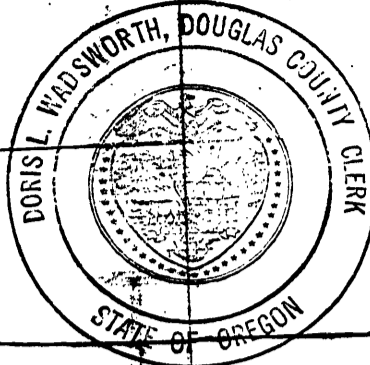


STATE OF OREGON )  
 COUNTY OF DOUGLAS )  
 I, DORIS WADSWORTH, COUNTY CLERK OF DOUGLAS COUNTY, OREGON DO HEREBY CERTIFY THAT  
 THE WITHIN COPY OF PLAT (COPY MADE FEB. 2, 1978) HAS BEEN BY ME COMPARED WITH AN ORIGINAL  
 PRINT THEREOF AND THAT IT IS AN EXACT COPY OF THE WHOLE THEREOF AS THE SAME APPEARS ON  
 FILE IN MY OFFICE AND CUSTODY.  
 WITNESS MY HAND AND OFFICIAL SEAL THIS 13<sup>th</sup> DAY OF Feb. 1978.

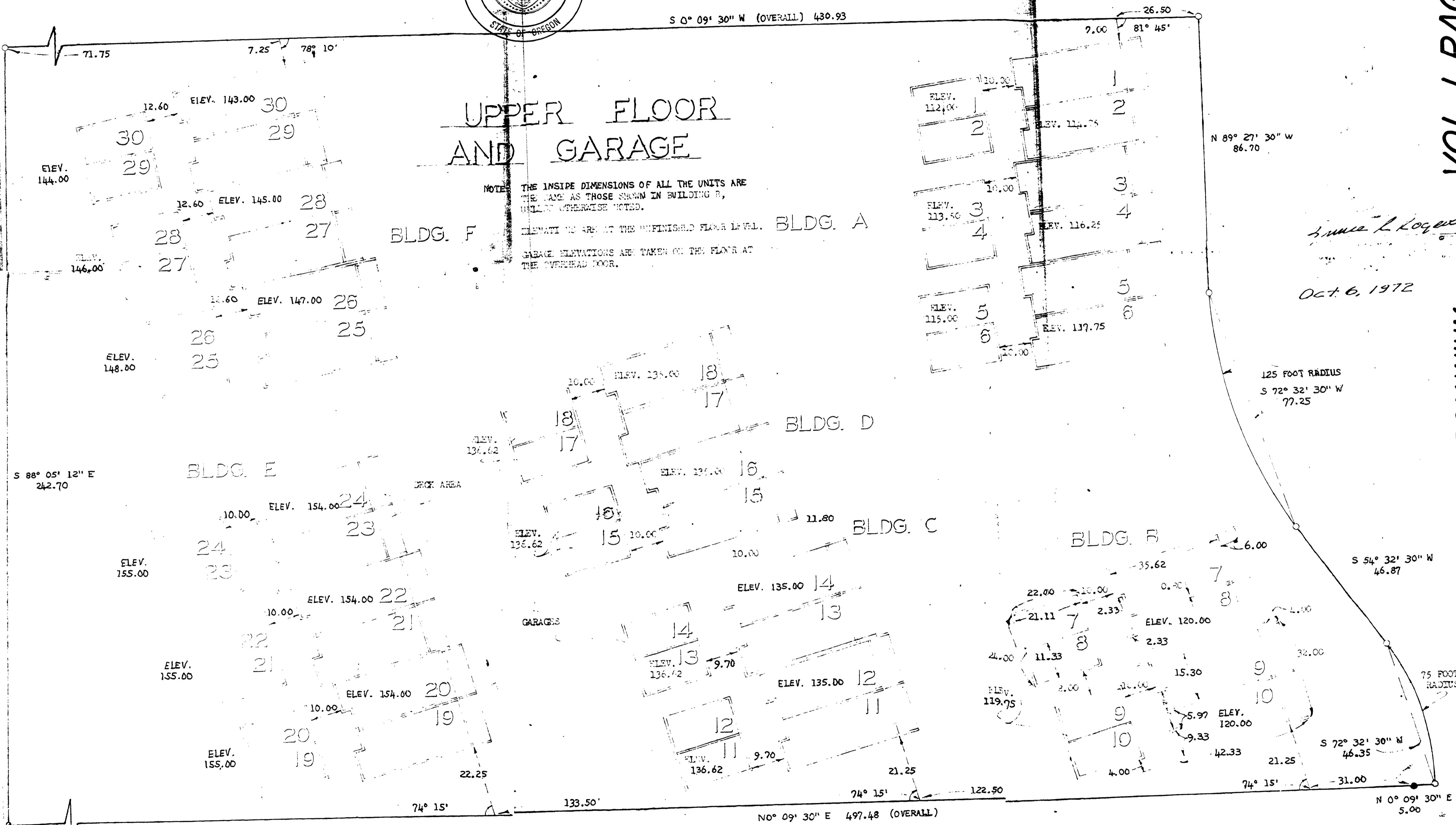


*Doris L. Wadsworth*

S 0° 09' 30" W (OVERALL) 430.93

# UPPER FLOOR AND GARAGE

NOTE: THE INSIDE DIMENSIONS OF ALL THE UNITS ARE THE SAME AS THOSE SHOWN IN BUILDING B, UNLESS OTHERWISE NOTED.  
 ELEVATIONS ARE AT THE UNFINISHED FLOOR LEVEL. BLDG. A  
 GARAGE ELEVATIONS ARE TAKEN ON THE FLOOR AT THE OVERHEAD DOOR.



VOL. I PAGE 1C

CONDOMINIUM