

EASTSIDE PLAZA CONDOMINIUM

LOCATED IN LOT 18, "FIRST ADDITION OF BROOKSIDE"
(VOL. 2 PG. 13), IN NE 1/4, SECTION 19, T27S, R5W, W.M.,
DOUGLAS COUNTY, OREGON

COUNTY SURVEYORS FILE DATA
DO NOT REMOVE FROM OFFICE

UNIT DIMENSIONS

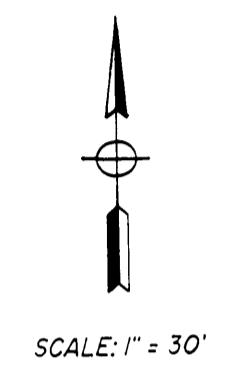
REGISTERED
PROFESSIONAL
LAND SURVEYOR

Romano E. Ware Romano E. Ware

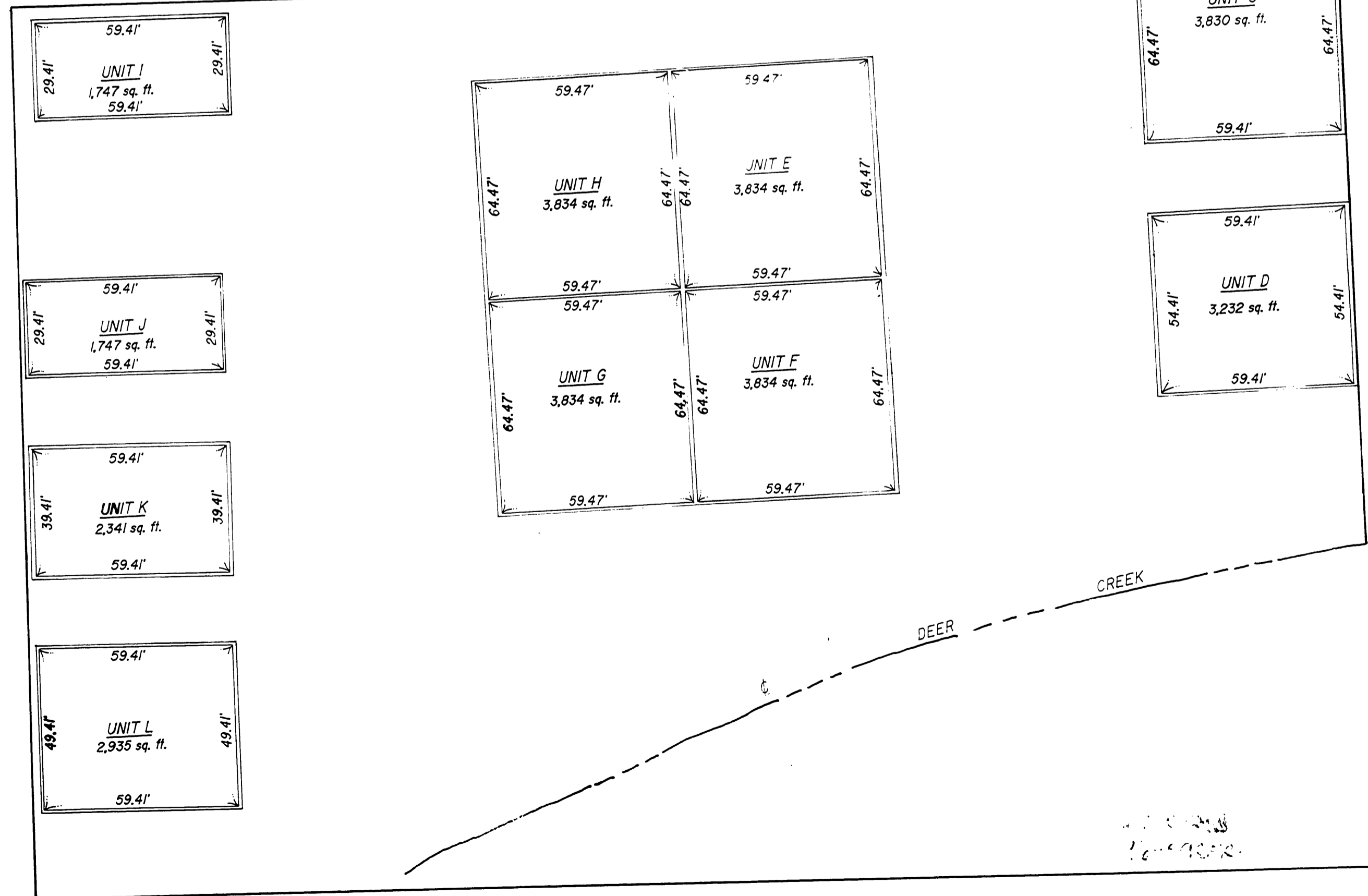
OREGON
NOV. 16, 1972
ROMANSO E. WARE
1005

EXPIRATION DATE 6/30/96

EXPIRATION DATE 6/30/96



SCALE: 1" = 30'



TYPICAL UNIT ELEVATIONS: HORIZ & VERT. SCALE 1" = 20'

