

EASTSIDE PLAZA CONDOMINIUM

LOCATED IN NE 1/4 OF SECTION 19, T27S, R5W, W1M.

OWNERS & DECLARANTS:

GENE & LINDA WAGNER

LANCE & LOLA SHORT

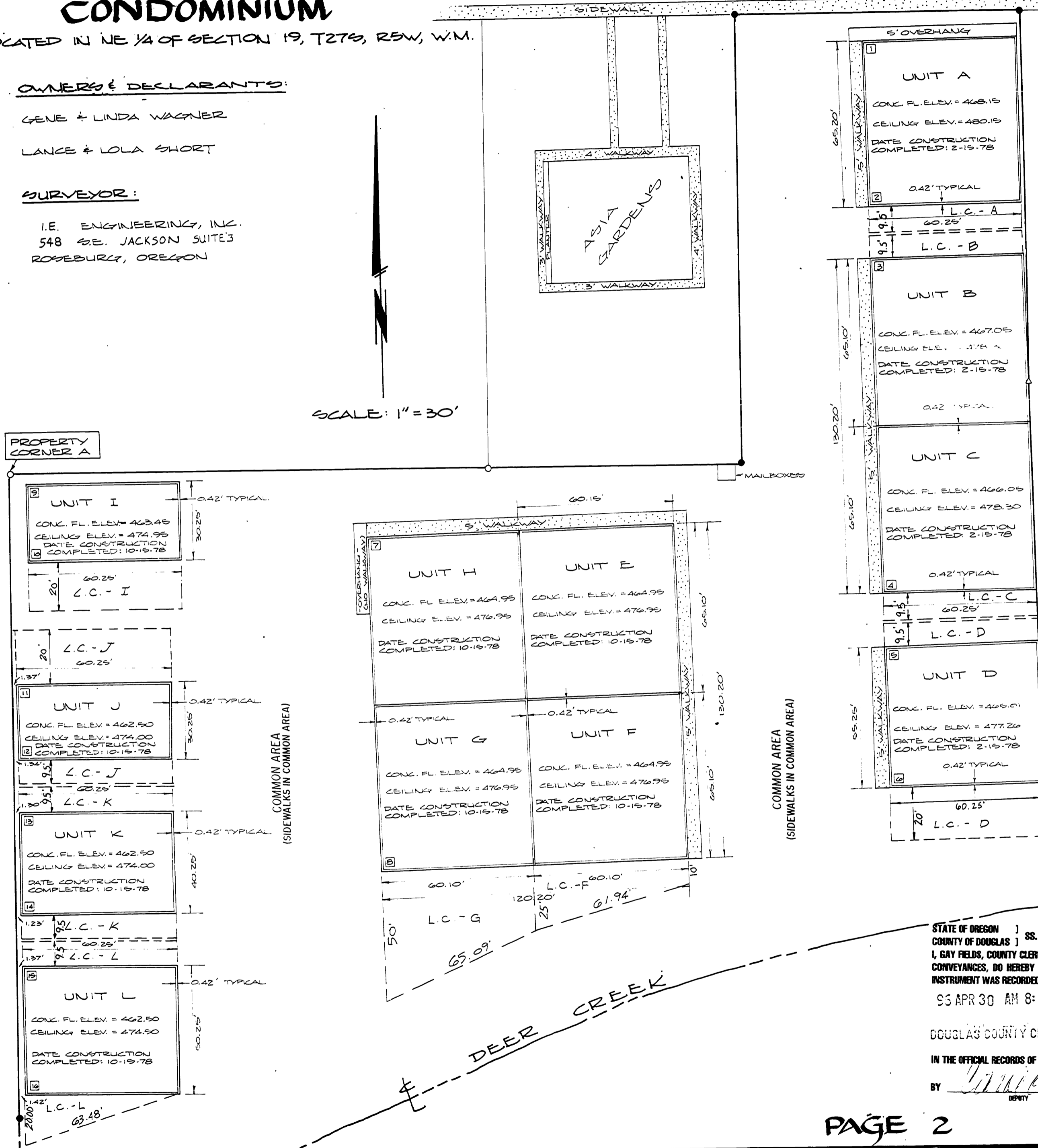
SURVEYOR:

I.E. ENGINEERING, INC.
548 S.E. JACKSON SUITE 3
ROSEBURG, OREGON

DIAMOND LAKE BOULEVARD

COUNTY SURVEYORS FILE DATA
DO NOT REMOVE FROM OFFICE

SCALE: 1" = 30'



BUILDING CORNER TIES

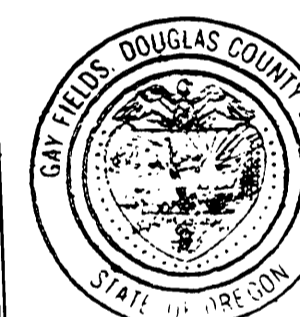
PROPERTY CORNER	UNIT CORNER	NORTH COORDINATE	EAST COORDINATE
A	1	+157.93'	+336.75'
A	2	+92.74'	+337.50'
A	3	+73.19'	+337.80'
A	4	-57.01'	+339.02'
A	5	-76.94'	+339.15'
A	6	-132.18'	+339.63'
A	7	-28.36'	+139.20'
A	8	-158.55'	+140.88'
A	9	-3.89'	+6.45'
A	10	-34.14'	+6.26'
A	11	-81.09'	+0.68'
A	12	-111.33'	+0.39'
A	13	-131.30'	+0.17'
A	14	-171.54'	+0.25'
A	15	-191.24'	+0.27'
A	16	-241.49'	+0.68'

ELEVATIONS SHOWN ARE BASED ON CITY OF ROSEBURG BENCHMARK (RSBG-5), ELEVATION 472.20

Karl Kierstead, Chief Deputy
DOUGLAS COUNTY ASSESSOR
4-29-96
DATE

I HEREBY CERTIFY THAT ALL TAXES AND SPECIAL ASSESSMENTS OR OTHER CHARGES REQUIRED BY LAW HAVE BEEN PAID.
Vicky Jankovic, deputy
DOUGLAS COUNTY TAX COLLECTOR
4-29-96
DATE

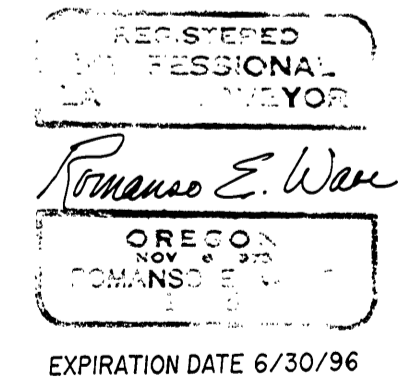
Harry E. Mansour, Deputy
DOUGLAS COUNTY SURVEYOR
4-26-96
DATE



FILED: 05 01:28 A.M. 4/30/96
Gay Fields, County Clerk
DOUGLAS COUNTY CLERK
4-30-96
DATE

CERTIFICATION:
I, ROMANSO E. WARE, DO HEREBY CERTIFY THAT I AM A REGISTERED PROFESSIONAL LAND SURVEYOR AND THAT THIS PLAT FULLY AND ACCURATELY DEPICTS THE BOUNDARIES OF THE UNITS AND FLOORS OF THE BUILDINGS AND THE DATE THAT CONSTRUCTION OF SUCH UNITS AND BUILDINGS WAS COMPLETED.
Romanso E. Ware
ROMANSO E. WARE
L.S. 1005

I FURTHER DECLARE THAT I HAVE CORRECTLY SURVEYED AND MARKED WITH PROPER MONUMENTS THE PERIMETER AS SHOWN HEREON AND THAT THE PROPERTY AND IMPROVEMENTS DESCRIBED ON THE PLAT ARE SUBJECT TO THE PROVISIONS OF ORS 100.005 TO 100.625.



STATE OF OREGON)
COUNTY OF DOUGLAS) SS.
I, GAY FIELDS, COUNTY CLERK AND RECORDER OF CONVEYANCES, DO HEREBY CERTIFY THAT THIS INSTRUMENT WAS RECORDED

95 APR 30 AM 8:28

DOUGLAS COUNTY CLERK

IN THE OFFICIAL RECORDS OF DOUGLAS COUNTY

BY *[Signature]*
DEPUTY
FEE

LEGEND:

- FD 5/8" I.R. w/CAP MKD "BHW, INC."
- FD 5/8" I.R.

L.C. LIMITED COMMON ELEMENT FOR USE BY UNIT AS SHOWN

95-09252

