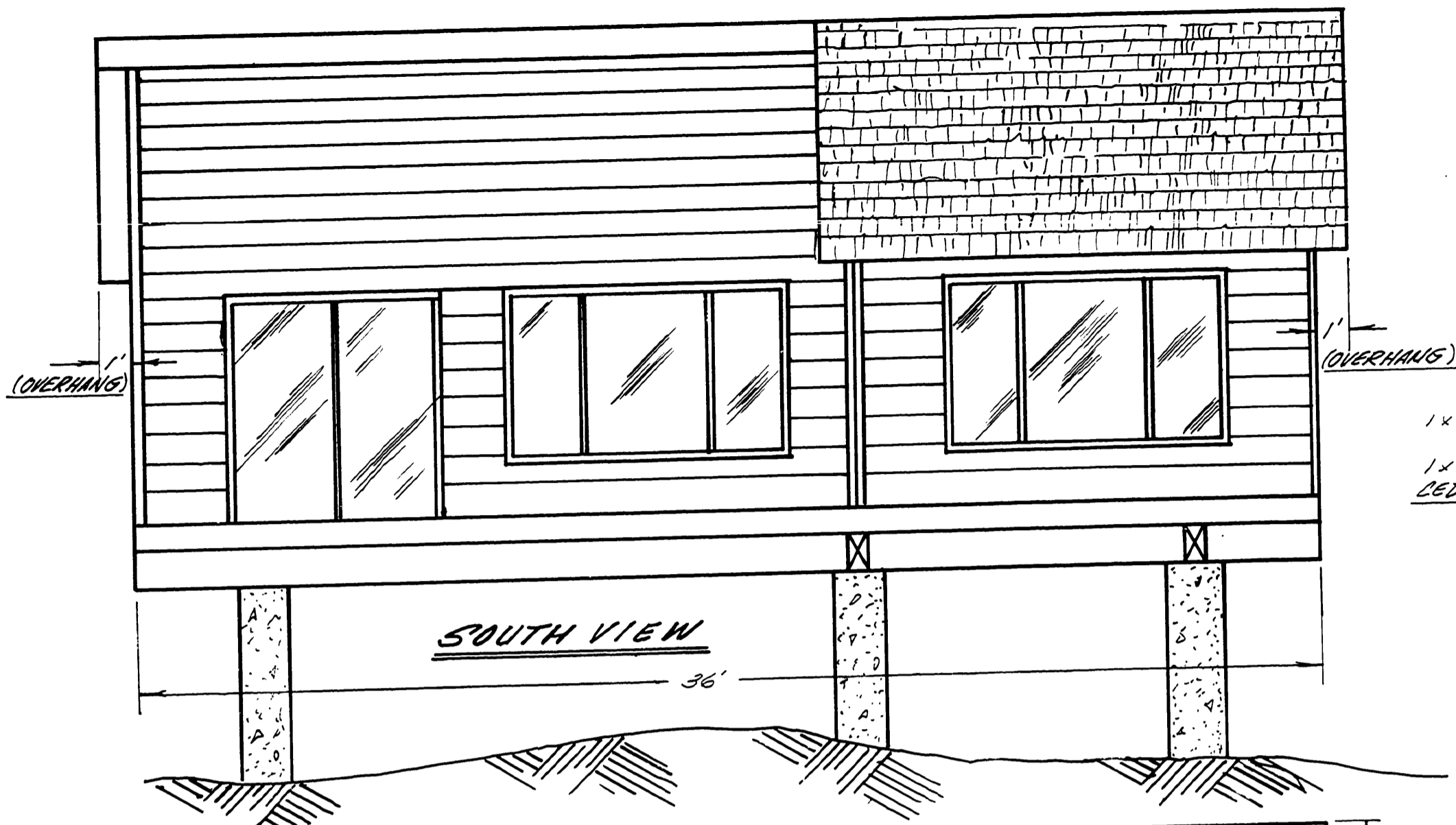
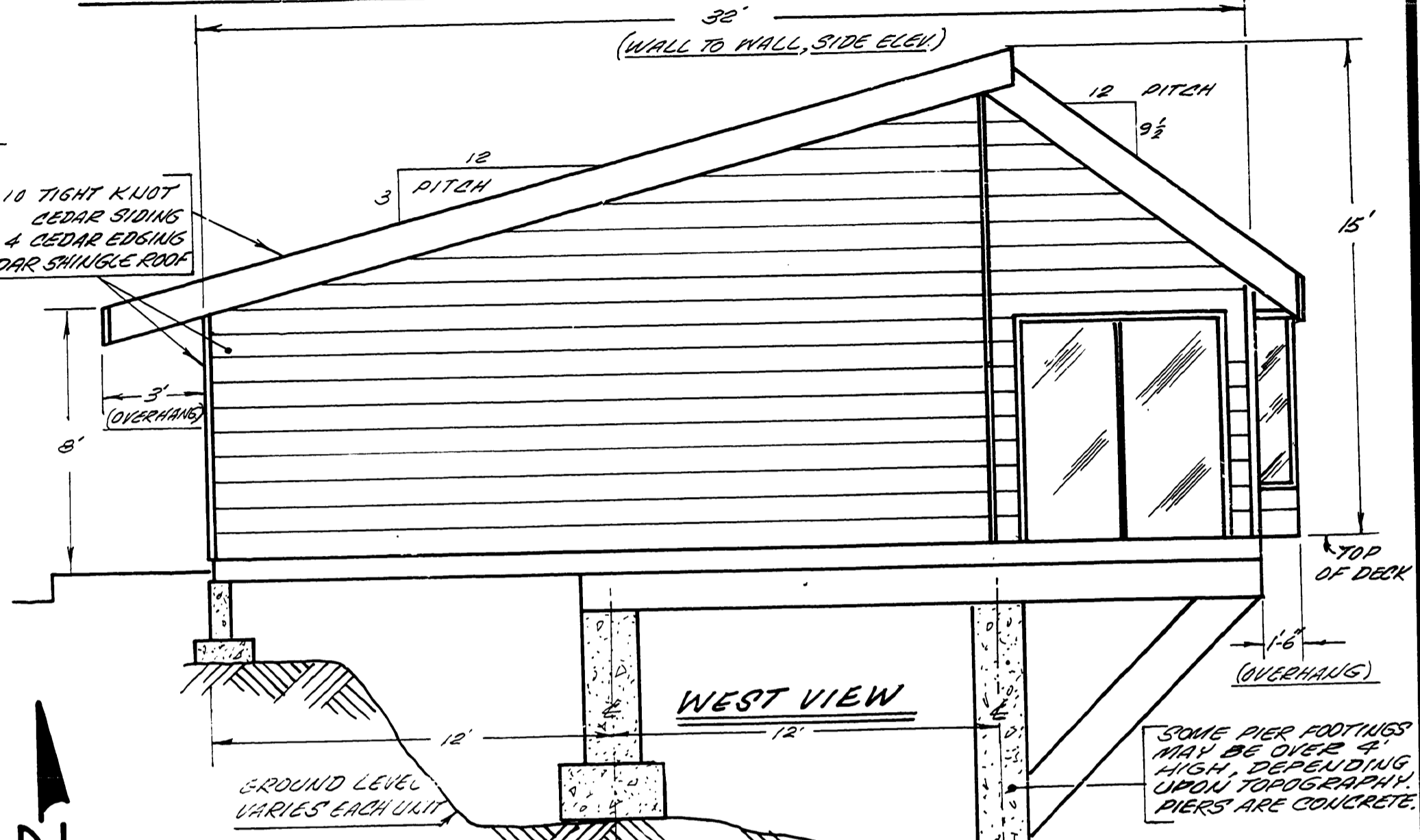


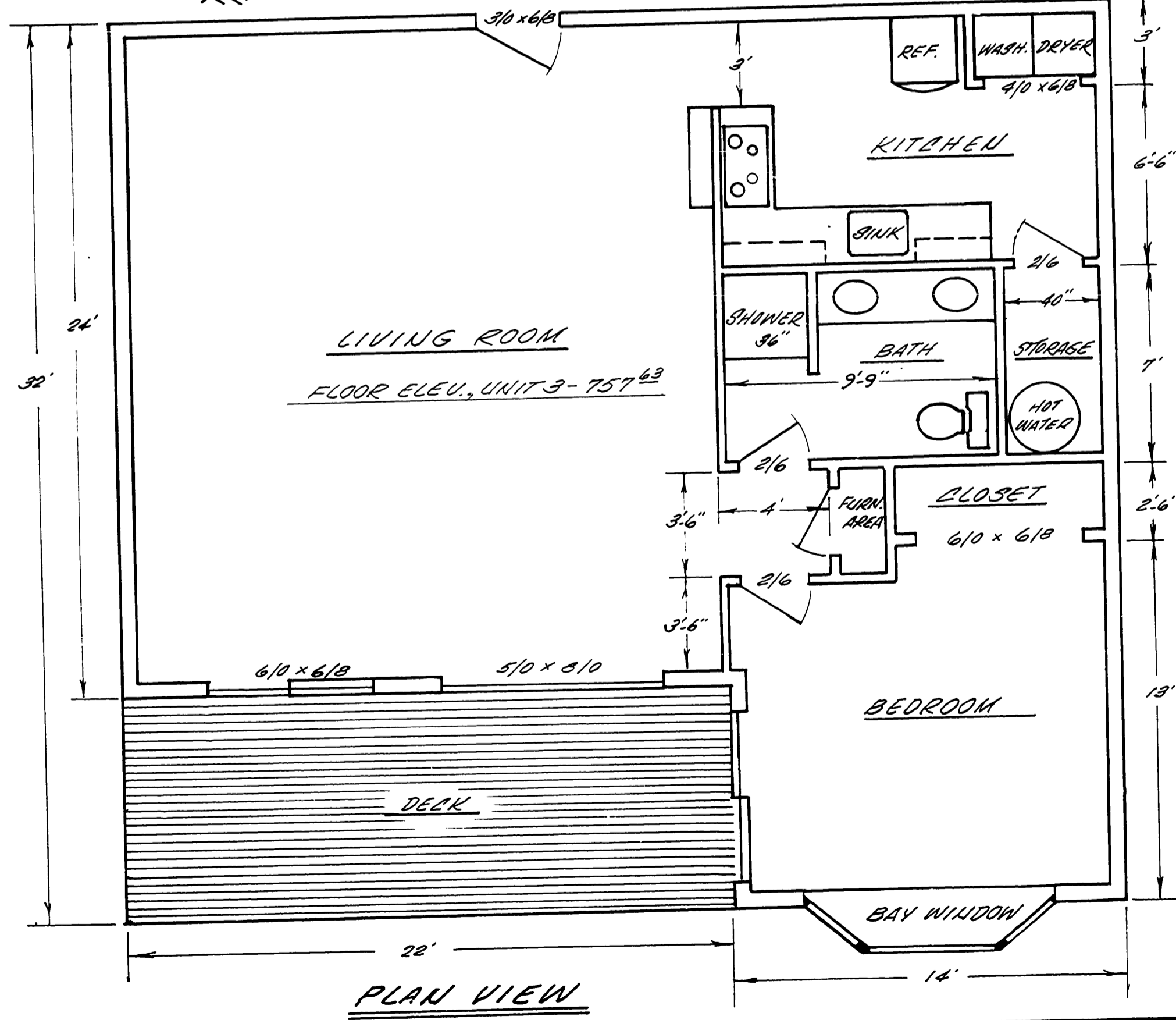
**TIMBER RIVER CONDOMINIUMS-STAGE II,
AND AMENDMENT TO THE DESCRIPTION OF
PROPOSED STAGE III, UNIT 4 OF THE
ORIGINAL PLAT. (DETAIL OF UNIT 3)**



SOUTH VIEW



WEST VIEW



PLAN VIEW

SCALE 1/4"=1'-0"
OCT. 1987

**TIMBER RIVER CONDOMINIUMS
IDLEYLO PARK, OREGON**

STATE OF OREGON)
COUNTY OF DOUGLAS) SS I, DONALD A. BENTZ, being duly sworn,
depose and say that I am the surveyor who made the survey and
prepared the final map of "TIMBER RIVER CONDOMINIUMS" - Stage II
and amendment to the description of proposed Stage III, Unit 4 of
the original plat, and that the foregoing tracing is an exact
copy of the map thereof.

Subscribed and sworn to before me this 29th day of March, 1988.
Donald A. Bentz #839

County Clerk
STATE OF OREGON)
COUNTY OF DOUGLAS) SS I, GAY FIELDS, County Clerk of Douglas County, Oregon,
do hereby certify that the within copy of plat has been by me compared with
the original thereof and that it is an exact copy of the whole thereof as
the same appears on file in my office and custody. Witness my hand
and seal this 29th day of March, 1988.

