

Francis L. Ingram
DOUGLAS COUNTY SURVEYOR
DATE 4-14-86

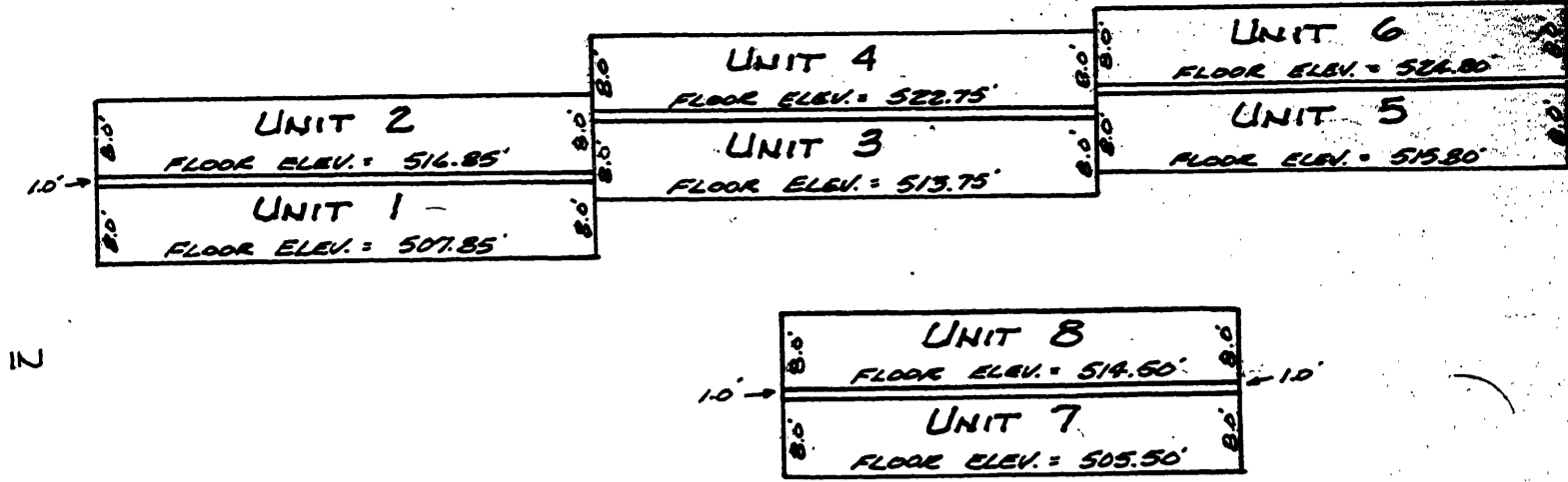
FILED:
Doris Wideman by Mary E. Weil
DOUGLAS COUNTY CLERK
DATE 6-12-86

George Maul by Raffi Duto
DOUGLAS COUNTY ASSESSOR
DATE 6-12-86

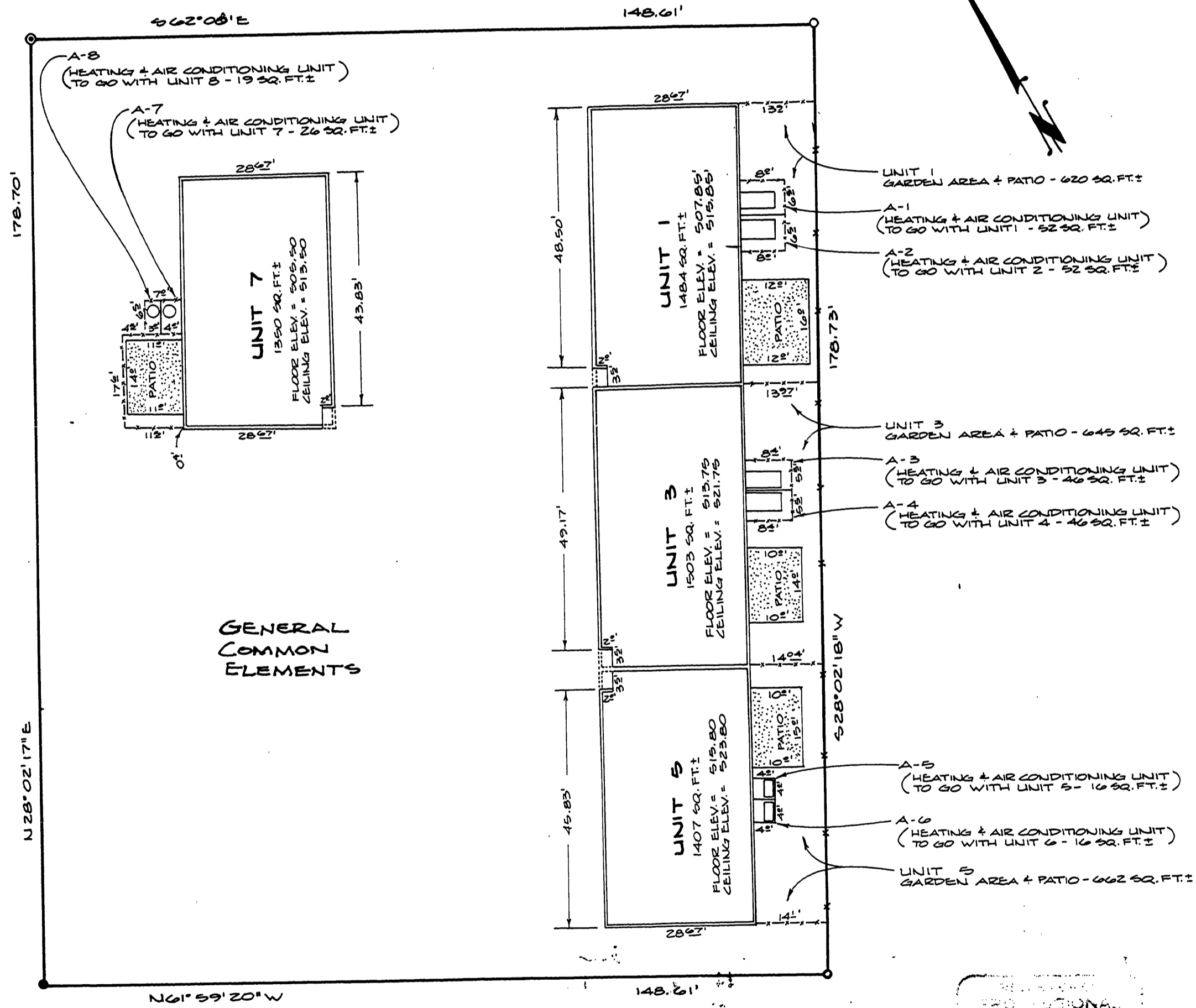
PARK MANOR CONDOMINIUMS

LOCATED IN THE SE 1/4 OF SECTION 24, T27S, R6W, W.M. AND IN
THE SW 1/4 OF SECTION 19, T27S, R6W, W.M.

VERTICAL VIEW OF LIVING SPACE PER UNIT
VERT. SCALE: 1" = 20'
HORIZ. SCALE: 1" = 20'



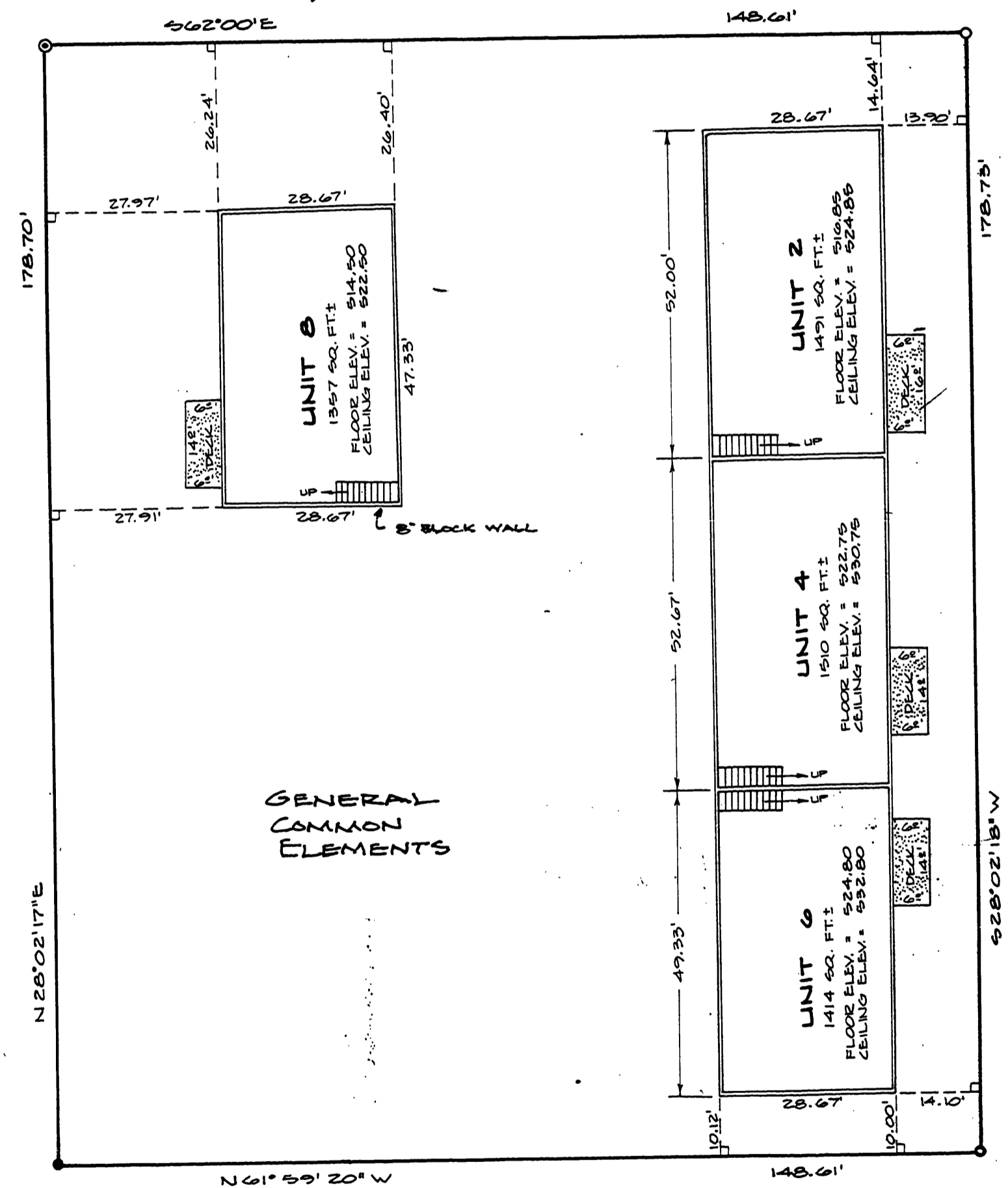
S.E. MOSHER AVE.



GROUND FLOOR UNITS

ROMANEO E. WARE
REGISTERED PROFESSIONAL
LAND SURVEYOR
REG. NO. 100

S.E. MOSHER AVE.



UPPER FLOOR UNITS

I, ROMANEO E. WARE, CERTIFY THAT THE PLAT FULLY AND ACCURATELY DEPICTS THE BOUNDARIES OF THE UNITS OF THE BUILDINGS AND THAT CONSTRUCTION OF THE UNITS AND THE BUILDINGS AS DEPICTED ON THE PLAT HAS BEEN COMPLETED.

RomanEO E. Ware

PLAT 6, 1986

PAGE 2 OF 2

VOL. 1 PAGE 12 B

VOL. 1 PAGE 12 B