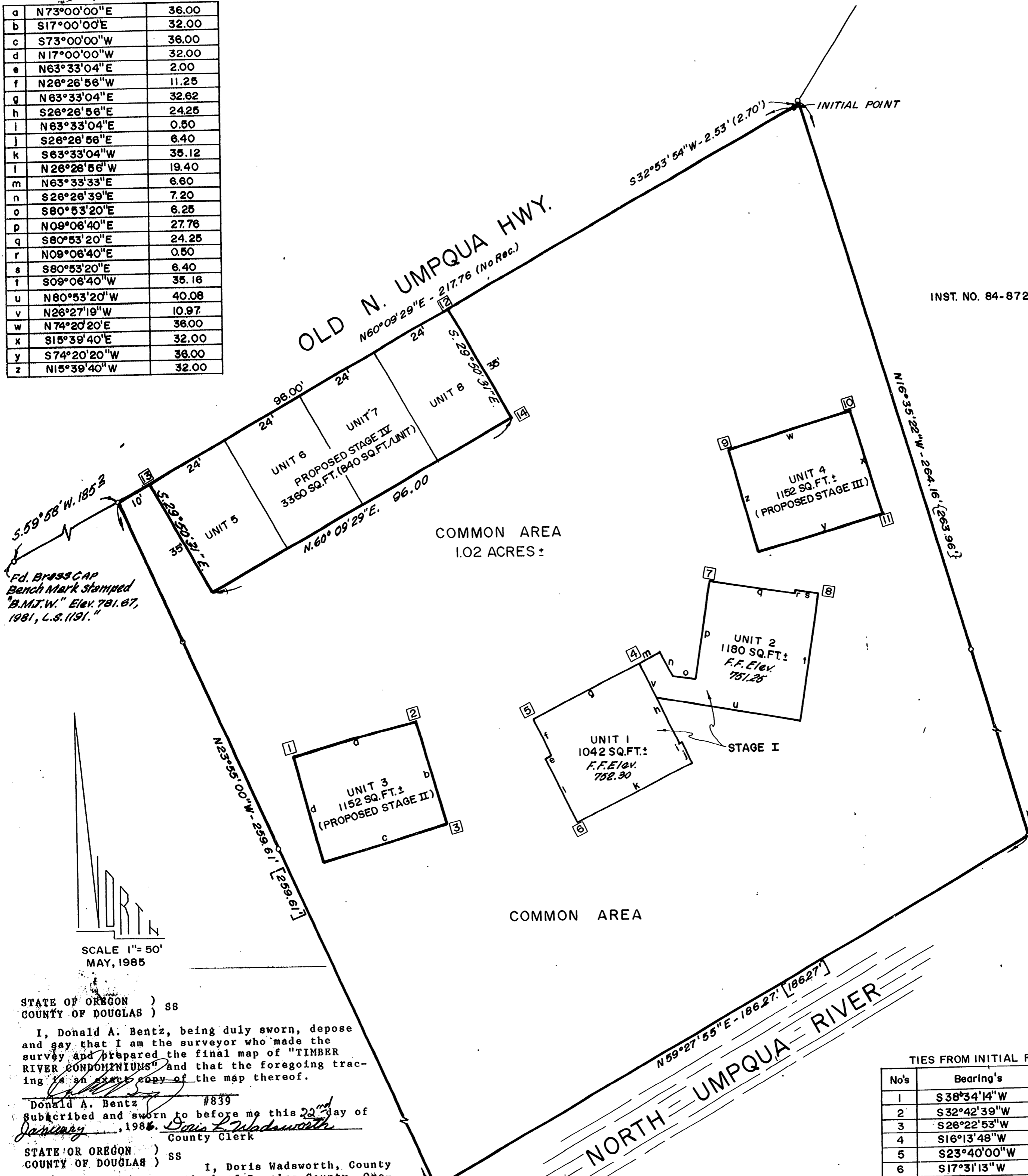


TIMBER RIVER CONDOMINIUMS
 LOCATED IN THE N.E. 1/4 OF SECTION 11, T 26 S, R.3 W, W.M.

a	N73°00'00"E	36.00
b	S17°00'00"E	32.00
c	S73°00'00"W	36.00
d	N17°00'00"W	32.00
e	N63°33'04"E	2.00
f	N26°26'56"W	11.25
g	N63°33'04"E	32.62
h	S26°26'56"E	24.25
i	N63°33'04"E	0.50
j	S26°26'56"E	6.40
k	S63°33'04"W	35.12
l	N26°26'56"W	19.40
m	N63°33'33"E	6.60
n	S26°26'39"E	7.20
o	S80°53'20"E	6.25
p	N09°06'40"E	27.76
q	S80°53'20"E	24.25
r	N09°06'40"E	0.50
s	S80°53'20"E	6.40
t	S09°06'40"W	35.16
u	N80°53'20"W	40.08
v	N26°27'19"W	10.97
w	N74°20'20"E	36.00
x	S15°39'40"E	32.00
y	S74°20'20"W	36.00
z	N15°39'40"W	32.00



INST. NO. 84-8720



STATE OF OREGON)
 COUNTY OF DOUGLAS) ss

I, Donald A. Bentz, being duly sworn, depose and say that I am the surveyor who made the survey and prepared the final map of "TIMBER RIVER CONDOMINIUMS" and that the foregoing tracing is an exact copy of the map thereof.

Donald A. Bentz #839
 Subscribed and sworn to before me this 22nd day of January, 1986.
 Doris L. Wadsworth
 County Clerk

STATE OF OREGON)
 COUNTY OF DOUGLAS) ss

I, Doris Wadsworth, County Clerk of Douglas County, Oregon, do hereby certify that the within copy of plat has been by me compared with the original thereof and that it is an exact copy of the whole thereof as the same appears on file in my office and custody. Witness my hand and seal this 22nd day of January, 1986.

REGISTERED PROFESSIONAL LAND SURVEYOR
 DONALD A. BENTZ
 839

TIES FROM INITIAL POINT

No's	Bearing's	Dist's
1	S38°34'14"W	228.02
2	S32°42'39"W	199.37
3	S26°22'53"W	221.41
4	S16°13'48"W	161.61
5	S23°40'00"W	185.27
6	S17°31'13"W	207.66
7	S10°54'20"W	134.69
8	S02°02'13"E	136.71
9	S12°19'40"W	95.31
10	S09°44'22"E	84.61
11	S11°21'48"E	116.49
12	S60°09'29"W	111.76
13	S60°09'29"W	207.76
14	S42°48'08"W	117.11

STATEMENT DELETED PER AFFIDAVIT OF CORRECTION FILED 3/29/88 CO. CLERK BK. 1015
 NOTES: UNITS HAVE NO VERTICAL BOUNDARIES Pg. 85

WALL CONSTRUCTION
 6" STUDS
 1/2" GYPBOARD (INSIDE)
 1/2" CDX (SUBSIDING)