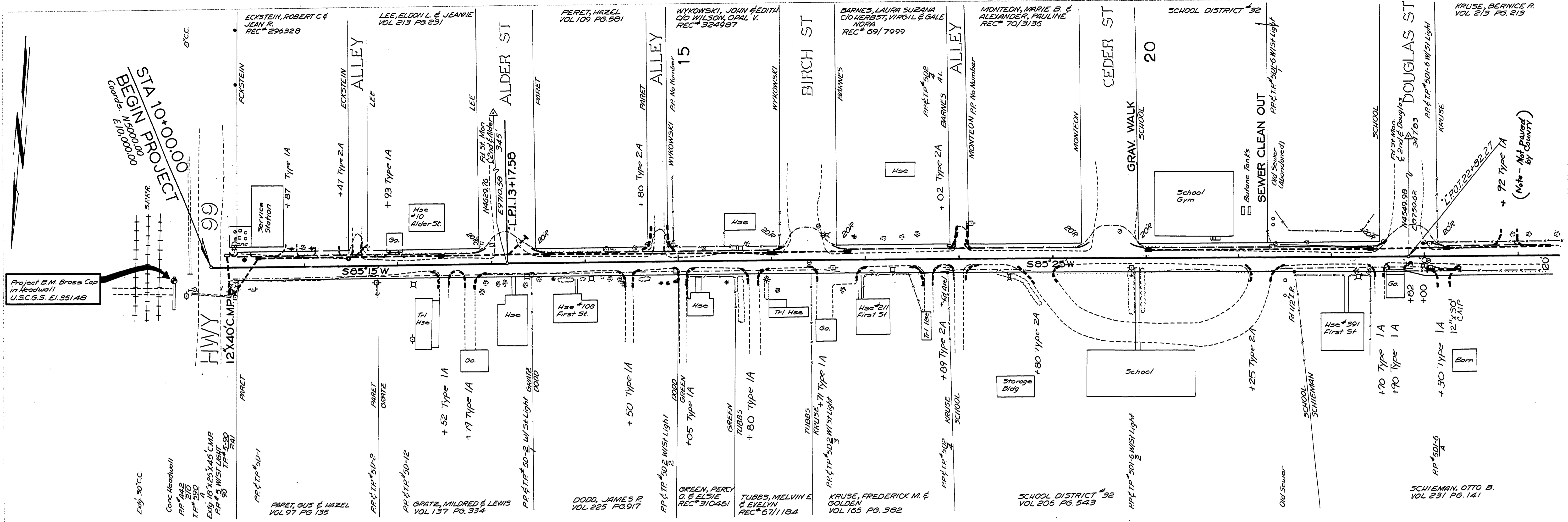


SEC 3 & 4 T23S R5W W.M.

|         |           |      |
|---------|-----------|------|
| PLAN    | REVISIONS | DATE |
| NO. 1   | AS SHOWN  |      |
| NO. 2   | AS SHOWN  |      |
| NO. 3   | AS SHOWN  |      |
| NO. 4   | AS SHOWN  |      |
| NO. 5   | AS SHOWN  |      |
| NO. 6   | AS SHOWN  |      |
| NO. 7   | AS SHOWN  |      |
| NO. 8   | AS SHOWN  |      |
| NO. 9   | AS SHOWN  |      |
| NO. 10  | AS SHOWN  |      |
| NO. 11  | AS SHOWN  |      |
| NO. 12  | AS SHOWN  |      |
| NO. 13  | AS SHOWN  |      |
| NO. 14  | AS SHOWN  |      |
| NO. 15  | AS SHOWN  |      |
| NO. 16  | AS SHOWN  |      |
| NO. 17  | AS SHOWN  |      |
| NO. 18  | AS SHOWN  |      |
| NO. 19  | AS SHOWN  |      |
| NO. 20  | AS SHOWN  |      |
| NO. 21  | AS SHOWN  |      |
| NO. 22  | AS SHOWN  |      |
| NO. 23  | AS SHOWN  |      |
| NO. 24  | AS SHOWN  |      |
| NO. 25  | AS SHOWN  |      |
| NO. 26  | AS SHOWN  |      |
| NO. 27  | AS SHOWN  |      |
| NO. 28  | AS SHOWN  |      |
| NO. 29  | AS SHOWN  |      |
| NO. 30  | AS SHOWN  |      |
| NO. 31  | AS SHOWN  |      |
| NO. 32  | AS SHOWN  |      |
| NO. 33  | AS SHOWN  |      |
| NO. 34  | AS SHOWN  |      |
| NO. 35  | AS SHOWN  |      |
| NO. 36  | AS SHOWN  |      |
| NO. 37  | AS SHOWN  |      |
| NO. 38  | AS SHOWN  |      |
| NO. 39  | AS SHOWN  |      |
| NO. 40  | AS SHOWN  |      |
| NO. 41  | AS SHOWN  |      |
| NO. 42  | AS SHOWN  |      |
| NO. 43  | AS SHOWN  |      |
| NO. 44  | AS SHOWN  |      |
| NO. 45  | AS SHOWN  |      |
| NO. 46  | AS SHOWN  |      |
| NO. 47  | AS SHOWN  |      |
| NO. 48  | AS SHOWN  |      |
| NO. 49  | AS SHOWN  |      |
| NO. 50  | AS SHOWN  |      |
| NO. 51  | AS SHOWN  |      |
| NO. 52  | AS SHOWN  |      |
| NO. 53  | AS SHOWN  |      |
| NO. 54  | AS SHOWN  |      |
| NO. 55  | AS SHOWN  |      |
| NO. 56  | AS SHOWN  |      |
| NO. 57  | AS SHOWN  |      |
| NO. 58  | AS SHOWN  |      |
| NO. 59  | AS SHOWN  |      |
| NO. 60  | AS SHOWN  |      |
| NO. 61  | AS SHOWN  |      |
| NO. 62  | AS SHOWN  |      |
| NO. 63  | AS SHOWN  |      |
| NO. 64  | AS SHOWN  |      |
| NO. 65  | AS SHOWN  |      |
| NO. 66  | AS SHOWN  |      |
| NO. 67  | AS SHOWN  |      |
| NO. 68  | AS SHOWN  |      |
| NO. 69  | AS SHOWN  |      |
| NO. 70  | AS SHOWN  |      |
| NO. 71  | AS SHOWN  |      |
| NO. 72  | AS SHOWN  |      |
| NO. 73  | AS SHOWN  |      |
| NO. 74  | AS SHOWN  |      |
| NO. 75  | AS SHOWN  |      |
| NO. 76  | AS SHOWN  |      |
| NO. 77  | AS SHOWN  |      |
| NO. 78  | AS SHOWN  |      |
| NO. 79  | AS SHOWN  |      |
| NO. 80  | AS SHOWN  |      |
| NO. 81  | AS SHOWN  |      |
| NO. 82  | AS SHOWN  |      |
| NO. 83  | AS SHOWN  |      |
| NO. 84  | AS SHOWN  |      |
| NO. 85  | AS SHOWN  |      |
| NO. 86  | AS SHOWN  |      |
| NO. 87  | AS SHOWN  |      |
| NO. 88  | AS SHOWN  |      |
| NO. 89  | AS SHOWN  |      |
| NO. 90  | AS SHOWN  |      |
| NO. 91  | AS SHOWN  |      |
| NO. 92  | AS SHOWN  |      |
| NO. 93  | AS SHOWN  |      |
| NO. 94  | AS SHOWN  |      |
| NO. 95  | AS SHOWN  |      |
| NO. 96  | AS SHOWN  |      |
| NO. 97  | AS SHOWN  |      |
| NO. 98  | AS SHOWN  |      |
| NO. 99  | AS SHOWN  |      |
| NO. 100 | AS SHOWN  |      |

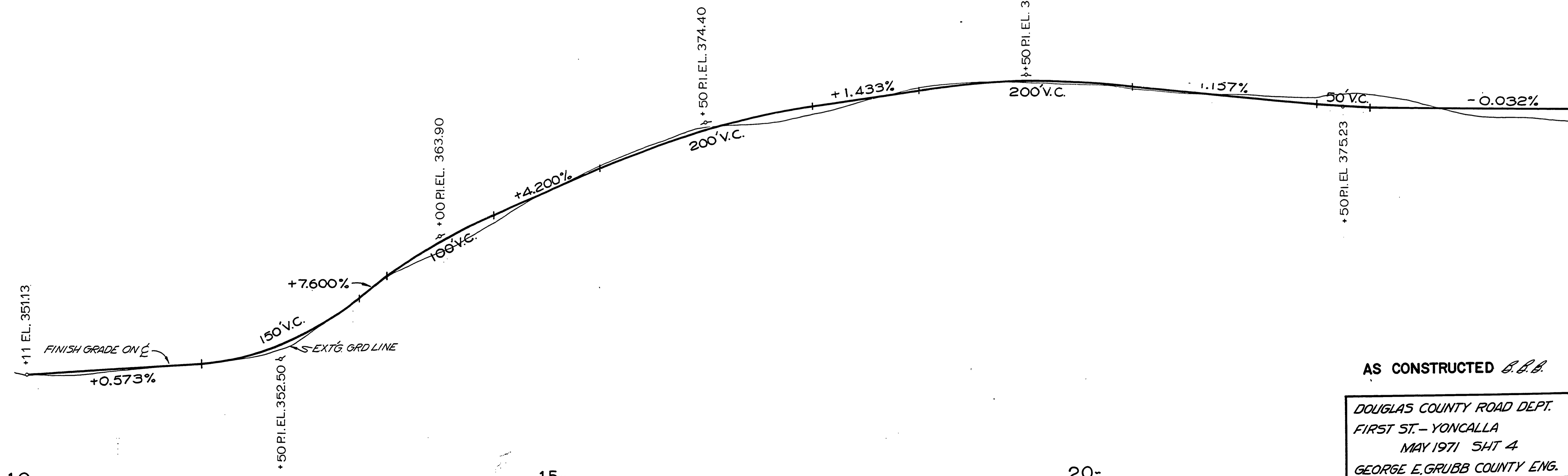


Project B.M. Brass Cap in Headwall  
U.S.C.G.S. E1.35148

STA 10+00.00  
BEGIN PROJECT

HWY 12X40C.M.P.

380  
375  
370  
365  
360  
355  
350



AS CONSTRUCTED *B.B.B.*  
DOUGLAS COUNTY ROAD DEPT.  
FIRST ST.-YONCALLA  
MAY 1971 SHT 4  
GEORGE E. GRUBB COUNTY ENG.

10-

15-

20-